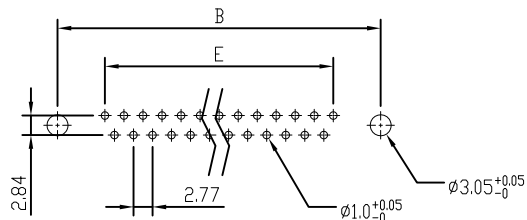
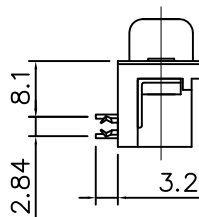
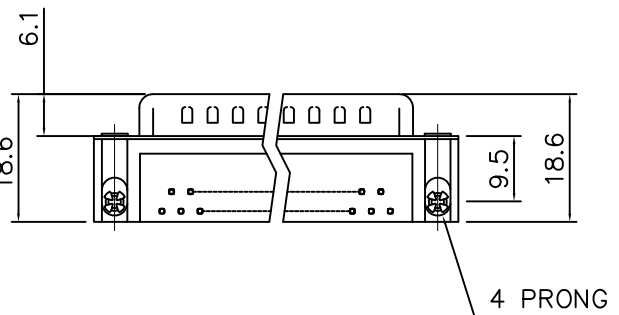
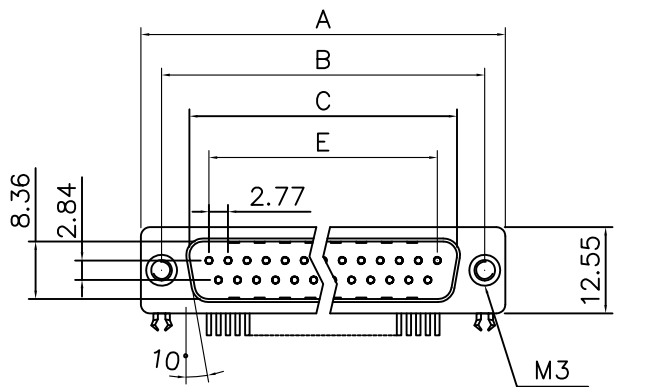


This document is the property of Amphenol Corporation and is delivered on the express condition that it is not to be disclosed, reproduced or used, in whole or in part, for manufacture or sale by anyone other than Amphenol Corporation without its prior consent, & that no right is granted to disclose or to use any information in this document.

Customer Drawing



RECOMMENDED P.C.B LAYOUT
(TOLERANCE $\pm 0.05\text{MM}$)

Dimensions

Positions	A	B	C	E
09	30.81	24.99	16.92	11.08
15	39.20	33.30	25.25	19.39
25	53.05	47.04	38.96	33.24
37	69.40	63.50	55.42	49.86

REVISIONS

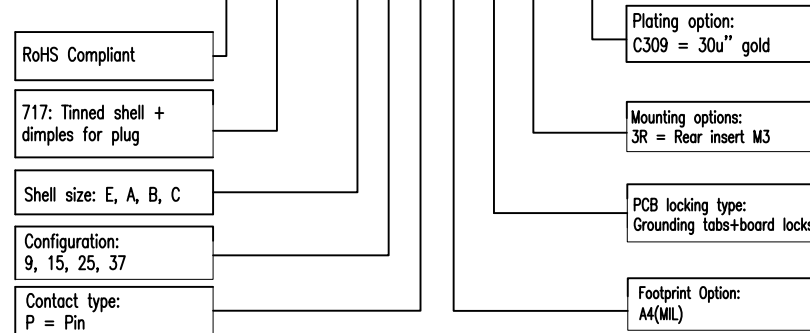
SYM	ECN	DESCRIPTION	DATE	APPROVED
1	HK--	First Release Drawing	07/01/08	IP
2	HK--	Update the Drawing	04/26/17	IP

D-SUB TECHNICAL DATA

SHELL : Steel, 100u" min Tin over 50u" min Nickel over 50u" min Copper
 BODY : PBT, UL 94V-0, Color:Black.
 CONTACTS : Copper alloy
 Gold flash over 50u" nickel on mating area
 100u" tin over 50u" nickel on solder area
 BOARDLOCK: Copper Alloy, Tin Plated.
 RIVET: Copper Alloy, Nickel Plated.
 ELECTRICAL : Voltage rating 250 VAC (RMS)
 Current Rating :3 AMP
 Withstanding Voltage >1000 VAC(RMS)
 Insulation resistance >1000 M Ohms
 Contact resistance 20 mOhms max
 MARKING : Amphenol-...(Series No.)
 Commercial reference
 Manufacturing date

PRODUCT CODE

L 717 SD X XX P A4 CH 3R C309



UNLESS OTHERWISE SPECIFIED TOLERANCES		APPROVAL		DATE
U.S.	METRIC	DRAWN	Patric Liu	04/26/17
.X +/-	0.50	CHECKED	Tomy Tang	04/26/17
.XX +/-	0.30	CHECKED		
.XXX +/-	0.20	DRAWING FILE :		
FRACTIONS +/-	5'	ANGLE OF PROJECTION		
ANGLES +/-				
FOR MATERIALS AND FINISHES SEE NOTES		DIMENSIONS		
REMOVE SHARP EDGES		D.S. INCHES		
		METRIC MM		

Amphenol

D-SUB connector, SD series

SIZE	DRAWING NO.	REV.
A4	L717SDXXXPA4CH3RC309	2
SCALE	NONE	SHEET 1 OF 1