

T-46-23-08



CYPRESS SEMICONDUCTOR

CY7C150

1024 x 4 Static R/W RAM

Features

- Memory reset function
- 1024 x 4 static RAM for control store in high-speed computers
- CMOS for optimum speed/power
- High speed
  - 10 ns (commercial)
  - 12 ns (military)
- Low power
  - 495 mW (commercial)
  - 550 mW (military)
- Separate inputs and outputs
- 5-volt power supply ±10% tolerance in both commercial and military
- Capable of withstanding greater than 2001V static discharge
- TTL-compatible inputs and outputs

Functional Description

The CY7C150 is a high-performance CMOS static RAM designed for use in cache memory, high-speed graphics, and data-acquisition applications. The CY7C150 has a memory reset feature that allows the entire memory to be reset in two memory cycles.

Separate I/O paths eliminates the need to multiplex data in and data out, providing for simpler board layout and faster system performance. Outputs are tri-stated during write, reset, deselect, or when output enable (OE) is held HIGH, allowing for easy memory expansion.

Reset is initiated by selecting the device (CS = LOW) and taking the reset (RS) input LOW. Within two memory cycles all bits are internally cleared to zero. Since chip select must be LOW for the device to be reset, a global reset signal can be em-

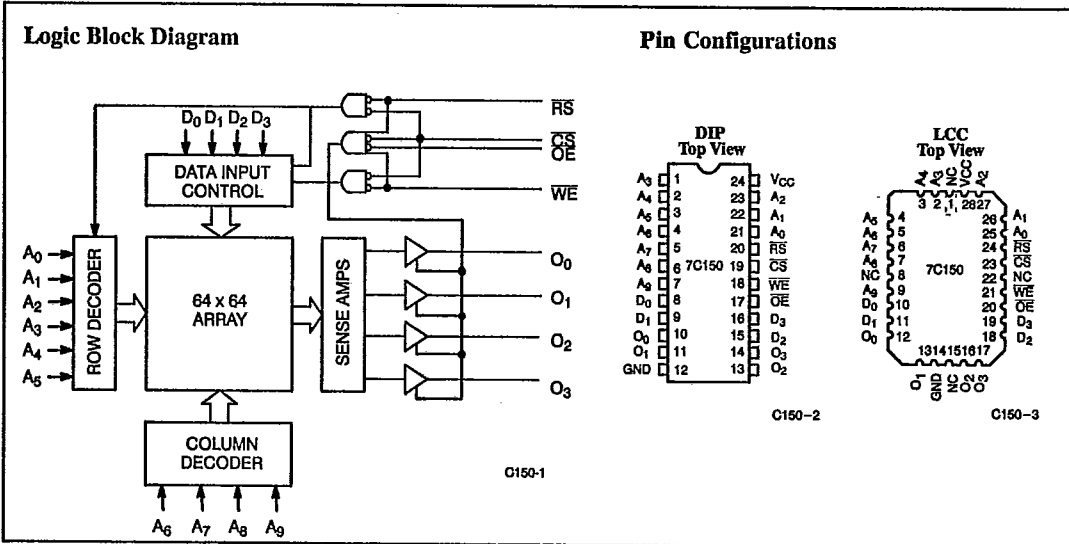
ployed, with only selected devices being cleared at any given time.

Writing to the device is accomplished when the chip select (CS) and write enable (WE) inputs are both LOW. Data on the four data inputs (D<sub>0</sub>-D<sub>3</sub>) is written into the memory location specified on the address pins (A<sub>0</sub> through A<sub>9</sub>).

Reading the device is accomplished by taking chip select (CS) and output enable (OE) LOW while write enable (WE) remains HIGH. Under these conditions, the contents of the memory location specified on the address pins will appear on the four output pins (O<sub>0</sub> through O<sub>3</sub>).

The output pins remain in high-impedance state when chip enable (CE) or output enable (OE) is HIGH, or write enable (WE) or reset (RS) is LOW.

A die coat is used to insure alpha immunity.



Selection Guide

		7C150-10	7C150-12	7C150-15	7C150-25	7C150-35
Maximum Access Time (ns)	Commercial	10	12	15	25	35
	Military		12	15	25	35
Maximum Operating Current (mA)	Commercial	90	90	90	90	90
	Military		100	100	100	100



T-46-23-08

CY7C150

**Maximum Ratings**

(Above which the useful life may be impaired. For user guidelines, not tested.)

Storage Temperature .....	- 65°C to +150°C
Ambient Temperature with Power Applied .....	- 55°C to +125°C
Supply Voltage to Ground Potential (Pin 24 to Pin 12) .....	- 0.5V to +7.0V
DC Voltage Applied to Outputs in High Z State .....	- 0.5V to +7.0V
DC Input Voltage .....	- 3.0V to +7.0V
Output Current into Outputs (Low) .....	20 mA

Static Discharge Voltage .....	>2001V (per MIL-STD-883, Method 3015)
Latch-Up Current .....	>200 mA

**Operating Range**

Range	Ambient Temperature	V <sub>CC</sub>
Commercial	0°C to +70°C	5V ± 10%
Military <sup>[1]</sup>	-55°C to +125°C	5V ± 10%



SRAMS

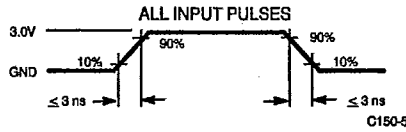
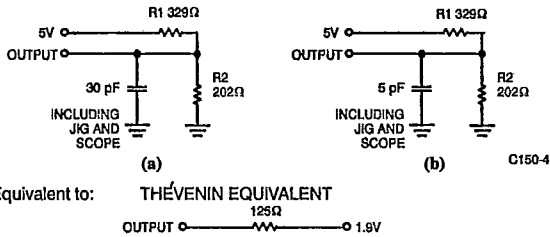
**Electrical Characteristics Over the Operating Range<sup>[2]</sup>**

Parameters	Description	Test Conditions	7C150		Units
			Min.	Max.	
V <sub>OH</sub>	Output HIGH Voltage	V <sub>CC</sub> = Min., I <sub>OH</sub> = -0.4 mA	2.4		V
V <sub>OL</sub>	Output LOW Voltage	V <sub>CC</sub> = Min., I <sub>OL</sub> = 12 mA		0.4	V
V <sub>IH</sub>	Input HIGH Level		2.0	V <sub>CC</sub>	V
V <sub>IL</sub>	Input LOW Level		-3.0	0.8	V
I <sub>IX</sub>	Input Load Current	GND ≤ V <sub>I</sub> ≤ V <sub>CC</sub>	-10	+10	μA
I <sub>OZ</sub>	Output Current (High Z)	V <sub>OL</sub> ≤ V <sub>OUT</sub> ≤ V <sub>OH</sub> , Output Disabled	-50	+50	μA
I <sub>OS</sub>	Output Short Circuit Current <sup>[3]</sup>	V <sub>CC</sub> = Max., V <sub>OUT</sub> = GND		-300	mA
I <sub>CC</sub>	V <sub>CC</sub> Operating Supply Current	V <sub>CC</sub> = Max., I <sub>OUT</sub> = 0 mA	Commercial	90	mA
			Military	100	mA

**Capacitance<sup>[4]</sup>**

Parameters	Description	Test Conditions	Max.	Units
C <sub>IN</sub>	Input Capacitance	T <sub>A</sub> = 25°C, f = 1 MHz, V <sub>CC</sub> = 5.0V	10	pF
C <sub>OUT</sub>	Output Capacitance		10	pF

**AC Test Loads and Waveforms**



**Notes:**

1. T<sub>A</sub> is the "instant on" case temperature.
2. See the last page of this specification for Group A subgroup testing information.
3. Not more than 1 output should be shorted at a time. Duration of the short circuit should not exceed 30 seconds.
4. Tested initially and after any design or process changes that may affect these parameters.
5. Test conditions assume signal transition times of 5 ns or less, timing reference levels of 1.5V, input pulse levels of 0 to 3.0V, and output loading of the specified I<sub>OL</sub>/I<sub>OH</sub> and 30-pF load capacitance.



T-46-23-08

CY7C150

Switching Characteristics Over the Operating Range<sup>[2, 5]</sup>

Parameters	Description	7C150-10		7C150-12		7C150-15		7C150-25		7C150-35		Units
		Min.	Max.	Min.	Max.	Min.	Max.	Min.	Max.	Min.	Max.	
<b>READ CYCLE</b>												
t <sub>RC</sub>	Read Cycle Time	10		12		15		25		35		ns
t <sub>AA</sub>	Address to Data Valid		10		12		15		25		35	ns
t <sub>OHA</sub>	Output Hold from Address Change	2		2		2		2		2		ns
t <sub>ACS</sub>	CS LOW to Data Valid		8		10		12		15		20	ns
t <sub>LZCS</sub>	CS LOW to Low Z <sup>[6]</sup>	0		0		0		0		0		ns
t <sub>HZCS</sub>	CS HIGH to High Z <sup>[6, 7]</sup>		6		8		11		20		25	ns
t <sub>DOE</sub>	OE LOW to Data Valid		6		8		10		15		20	ns
t <sub>LZOE</sub>	OE LOW to Low Z <sup>[6]</sup>	0		0		0		0		0		ns
t <sub>HZOE</sub>	OE HIGH to High Z <sup>[9, 7]</sup>		6		8		9		20		25	ns
<b>WRITE CYCLE</b> <sup>[8]</sup>												
t <sub>WC</sub>	Write Cycle Time	10		12		15		25		35		ns
t <sub>SCS</sub>	CS LOW to Write End	6		8		11		15		20		ns
t <sub>AW</sub>	Address Set-Up to Write End	8		10		13		20		30		ns
t <sub>HA</sub>	Address Hold from Write End	2		2		2		5		5		ns
t <sub>SA</sub>	Address Set-Up to Write Start	2		2		2		5		5		ns
t <sub>PWE</sub>	WE Pulse Width	6		8		11		15		20		ns
t <sub>SD</sub>	Data Set-Up to Write End	6		8		11		15		20		ns
t <sub>HD</sub>	Data Hold from Write End	2		2		2		5		5		ns
t <sub>LZWE</sub>	WE HIGH to Low Z <sup>[6]</sup>	0		0		0		0		0		ns
t <sub>HZWE</sub>	WE LOW to High Z <sup>[6, 7]</sup>		6		8		12		20		25	ns
<b>RESET CYCLE</b>												
t <sub>RRC</sub>	Reset Cycle Time	20		24		30		50		70		ns
t <sub>SAR</sub>	Address Valid to Beginning of Reset	0		0		0		0		0		ns
t <sub>SWER</sub>	Write Enable HIGH to Beginning of Reset	0		0		0		0		0		ns
t <sub>SCSR</sub>	Chip Select LOW to Beginning of Reset	0		0		0		0		0		ns
t <sub>PRS</sub>	Reset Pulse Width	10		12		15		20		30		ns
t <sub>HCSR</sub>	Chip Select Hold After End of Reset	0		0		0		0		0		ns
t <sub>HWER</sub>	Write Enable Hold After End of Reset	8		12		15		30		40		ns
t <sub>HAR</sub>	Address Hold After End of Reset	10		12		15		30		40		ns
t <sub>LZRS</sub>	Reset HIGH to Output in Low Z <sup>[6]</sup>	0		0		0		0		0		ns
t <sub>HZRS</sub>	Reset LOW to Output in High Z <sup>[6, 7]</sup>		6		8		12		20		25	ns

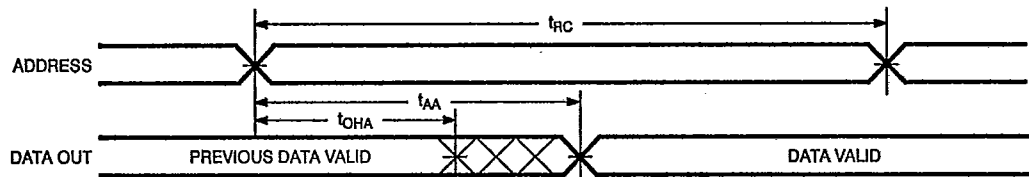
Notes:

- At any given temperature and voltage condition, t<sub>HZ</sub> is less than t<sub>LZ</sub> for any given device.
- t<sub>HZCS</sub>, t<sub>HZOE</sub>, t<sub>HZRS</sub>, and t<sub>HZWE</sub> are tested with C<sub>L</sub> = 5 pF as in part (b) of AC Test Loads. Transition is measured ±500 mV from steady state voltage.
- The internal write time of the memory is defined by the overlap of CS LOW and WE LOW. Both signals must be LOW to initiate a write and either signal can terminate a write by going HIGH. The data input set-up and hold timing should be reference to the rising edge of the signal that terminates the write.



Switching Waveforms

Read Cycle No. 1<sup>[9, 10]</sup>

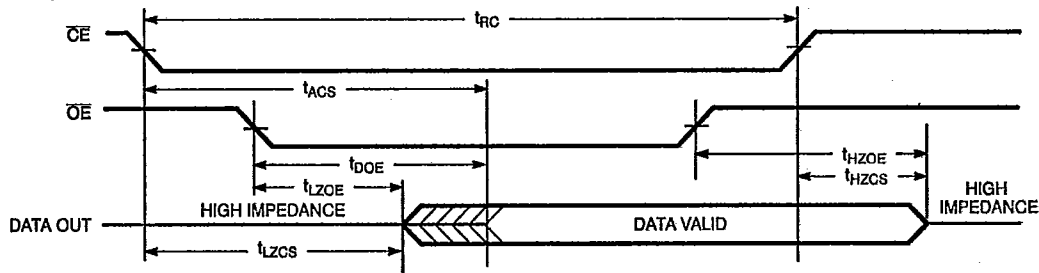


C150-6



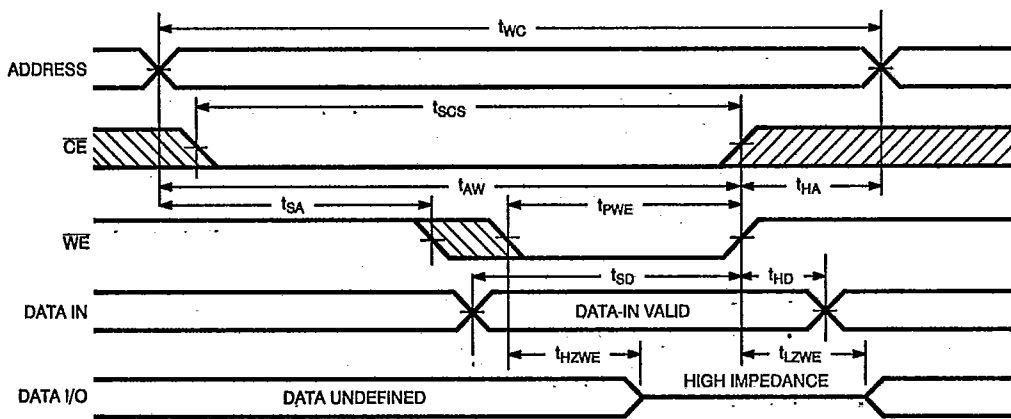
SRAMS

Read Cycle No. 2<sup>[10, 11]</sup>



C150-7

Write Cycle No. 1 ( $\overline{WE}$  Controlled)<sup>[8]</sup>



C150-8

Notes:

- 9.  $\overline{WE}$  is HIGH for read cycle.
- 10. Device is continuously selected,  $\overline{CS}$  and  $\overline{OE} = V_{IL}$ .

11. Address prior to or coincident with  $\overline{CS}$  transition LOW.

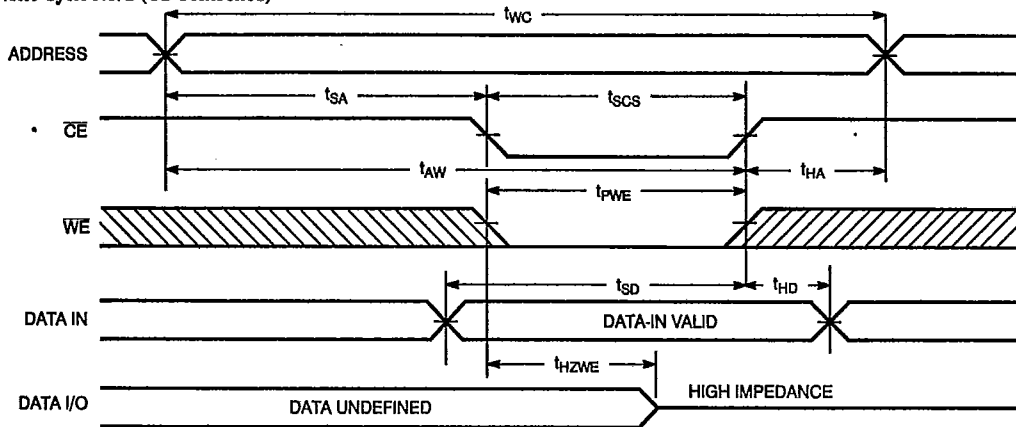


T-46-23-08

CY7C150

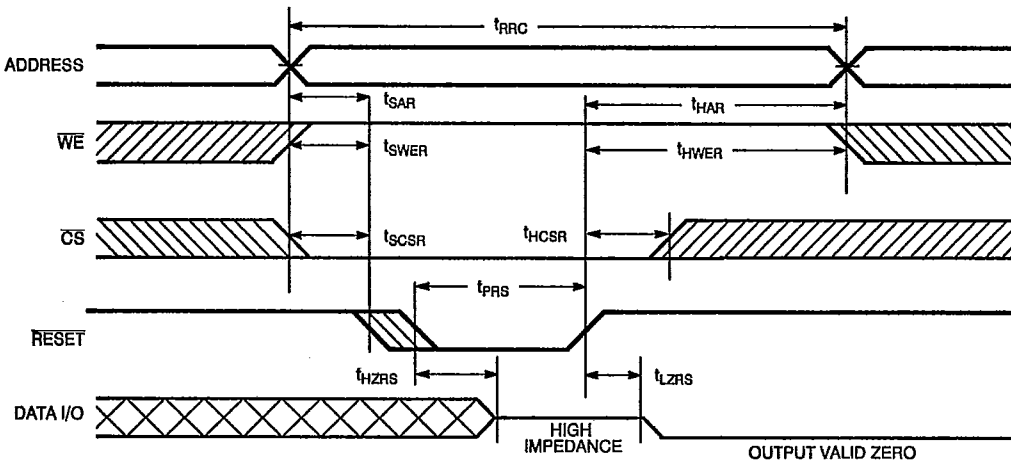
Switching Waveforms (continued)

Write Cycle No. 2 ( $\overline{CS}$  Controlled)<sup>[8, 12]</sup>



C150-9

Reset Cycle<sup>[13]</sup>



C150-10

Notes:

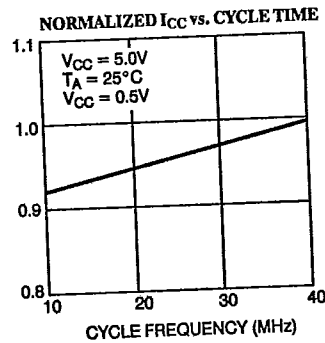
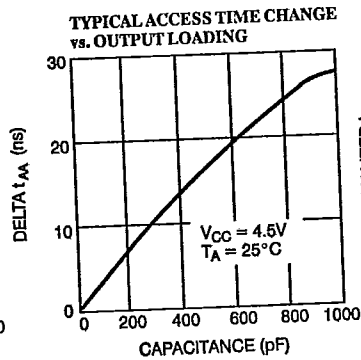
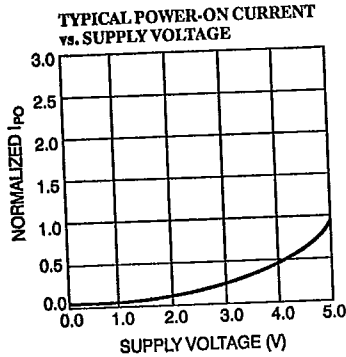
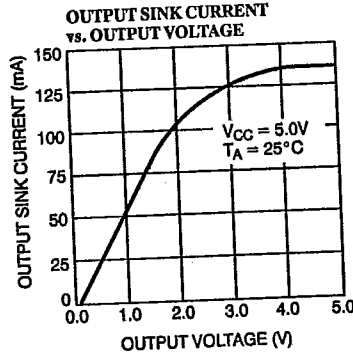
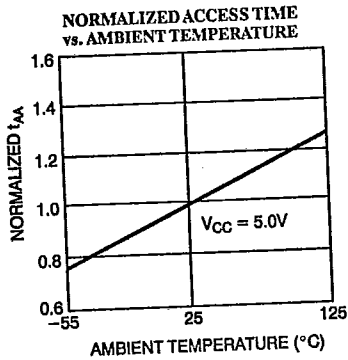
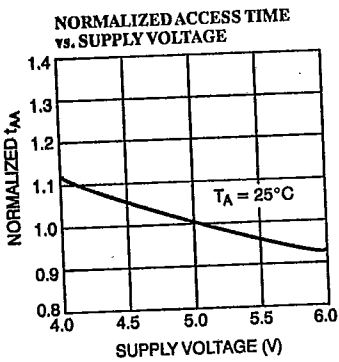
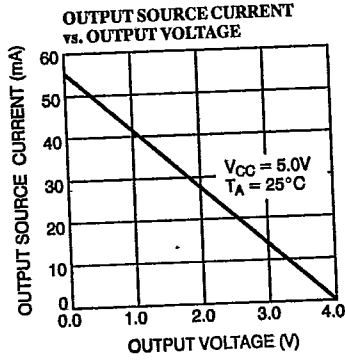
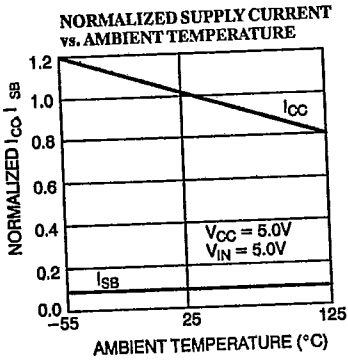
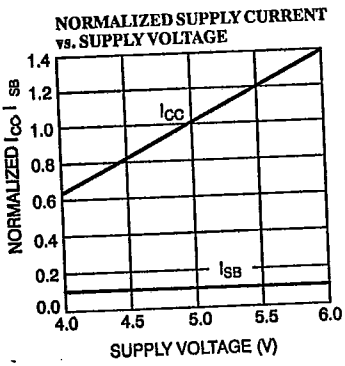
12. If  $\overline{CS}$  goes HIGH with  $\overline{WE}$  HIGH, the output remains in a high-impedance state.

13. Reset cycle is defined by the overlap of  $\overline{RS}$  and  $\overline{CS}$  for the minimum reset pulse width.



Typical DC and AC Characteristics

2  
SRAMS





T-46-23-08

CY7C150

**Truth Table**

Inputs				Outputs	Mode
CS	WE	OE	RS		
H	X	X	X	High Z	Not Selected
L	H	X	L	High Z	Reset
L	L	X	H	High Z	Write
L	H	L	H	O <sub>0</sub> -O <sub>3</sub>	Read
L	X	H	H	High Z	Output Disable

**Ordering Information**

Speed (ns)	Ordering Code	Package Type	Operating Range
10	CY7C150-10PC	P13A	Commercial
	CY7C150-10DC	D14	
	CY7C150-10LC	L54	
	CY7C150-10SC	S13	
12	CY7C150-12PC	P13A	Commercial
	CY7C150-12DC	D14	
	CY7C150-12LC	L54	
	CY7C150-12SC	S13	
	CY7C150-12DMB	D14	Military
	CY7C150-12LMB	L54	
15	CY7C150-15PC	P13A	Commercial
	CY7C150-15DC	D14	
	CY7C150-15LC	L54	
	CY7C150-15SC	S13	
	CY7C150-15DMB	D14	Military
	CY7C150-15LMB	L54	

Speed (ns)	Ordering Code	Package Type	Operating Range
25	CY7C150-25PC	P13A	Commercial
	CY7C150-25DC	D14	
	CY7C150-25LC	L54	
	CY7C150-25SC	S13	
	CY7C150-25DMB	D14	Military
	CY7C150-25LMB	L54	
35	CY7C150-35PC	P13A	Commercial
	CY7C150-35DC	D14	
	CY7C150-35LC	L54	
	CY7C150-35SC	S13	
	CY7C150-35DMB	D14	Military
	CY7C150-35LMB	L54	



T-46-23-08

CY7C150

**MILITARY SPECIFICATIONS**  
**Group A Subgroup Testing**
**DC Characteristics**

Parameters	Subgroups
V <sub>OH</sub>	1, 2, 3
V <sub>OL</sub>	1, 2, 3
V <sub>IH</sub>	1, 2, 3
V <sub>IL Max.</sub>	1, 2, 3
I <sub>IX</sub>	1, 2, 3
I <sub>OZ</sub>	1, 2, 3
I <sub>CC</sub>	1, 2, 3



SRAMS

**Switching Characteristics**

Parameters	Subgroups
<b>READ CYCLE</b>	
t <sub>RC</sub>	7, 8, 9, 10, 11
t <sub>AA</sub>	7, 8, 9, 10, 11
t <sub>OHA</sub>	7, 8, 9, 10, 11
t <sub>ACS</sub>	7, 8, 9, 10, 11
<b>WRITE CYCLE</b>	
t <sub>WC</sub>	7, 8, 9, 10, 11
t <sub>SCS</sub>	7, 8, 9, 10, 11
t <sub>AW</sub>	7, 8, 9, 10, 11
t <sub>HA</sub>	7, 8, 9, 10, 11
t <sub>SA</sub>	7, 8, 9, 10, 11
t <sub>PWE</sub>	7, 8, 9, 10, 11
t <sub>SD</sub>	7, 8, 9, 10, 11
t <sub>HD</sub>	7, 8, 9, 10, 11
<b>RESET CYCLE</b>	
t <sub>RRC</sub>	7, 8, 9, 10, 11
t <sub>SAR</sub>	7, 8, 9, 10, 11
t <sub>SWER</sub>	7, 8, 9, 10, 11
t <sub>SCSR</sub>	7, 8, 9, 10, 11
t <sub>PRS</sub>	7, 8, 9, 10, 11
t <sub>HCSR</sub>	7, 8, 9, 10, 11
t <sub>HWER</sub>	7, 8, 9, 10, 11
t <sub>HAR</sub>	7, 8, 9, 10, 11

Document #: 38-00028-B