

PART NUMBER	GRNDBAR 1 POS	GRNDBAR 2 POS	GRNDBAR 3 POS	GRNDBAR 4 POS	GRNDBAR 5 POS	GRNDBAR 6 POS	GRNDBAR 7 POS	GRNDBAR 8 POS	GRNDBAR 9 POS
10155106-101LF	2A, 3B, 2C, 3D, 2E	5A, 4B, 5C, 4D, 5E	6A, 7B, 6C, 7D, 6E	9A, 8B, 9C, 8D, 9E	10A, 11B, 10C, 11D, 10E	13A, 12B, 13C, 12D, 13E	14A, 15B, 14C, 15D, 14E	17A, 16B, 17C, 16D, 17E	18A, 19B, 18C, 19D, 18E
10155106-102LF	NIL	NIL	NIL	NIL	NIL	NIL	NIL	NIL	NIL

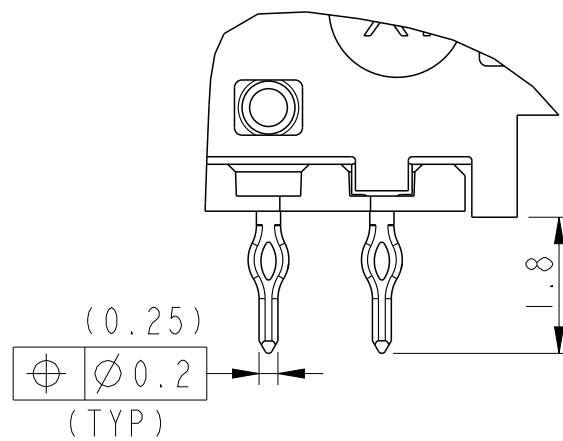
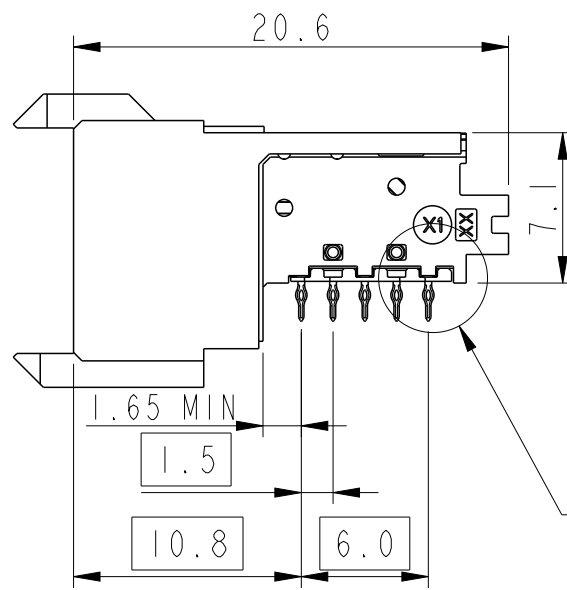
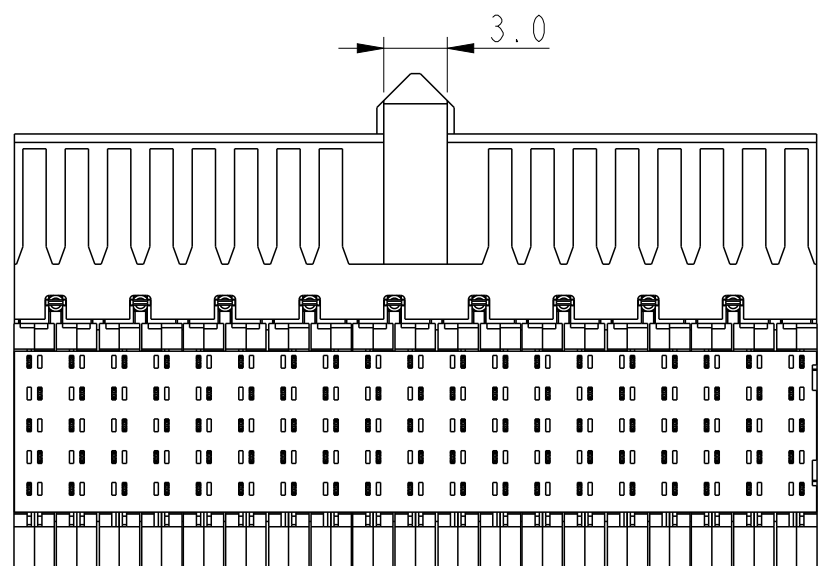
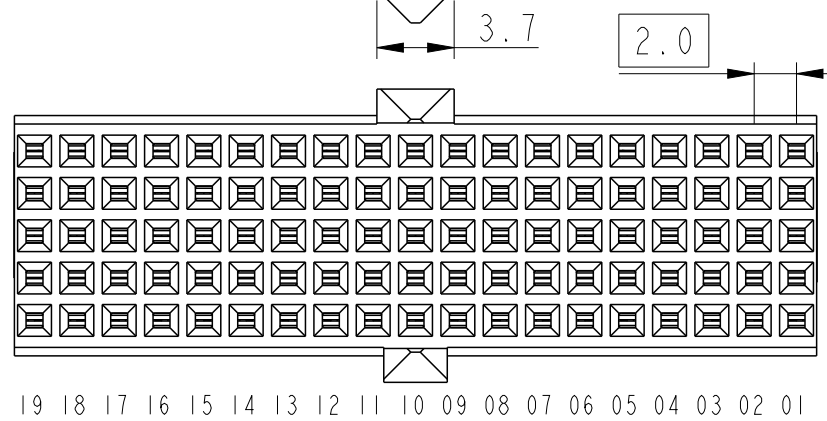
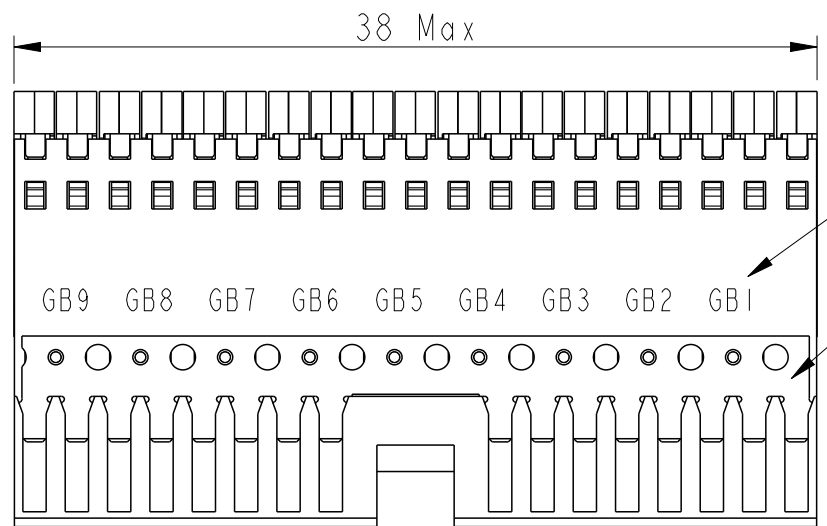
ABOVE TABLE SHOWS CONNECTED GROUND POSITIONS OF INDIVIDUAL GROUND BARS
PINNING CONFIGURATION

F	0	0	0	0	0	0	0	0	0	0	0	0	0	0	0	0	0	0	
E	G	G	HS	HS	G	G	HS	HS	G	G	HS	HS	G	G	HS	HS	G	G	LS
D	HS	HS	G	G	HS	HS	G	G	HS	HS	G	G	HS	HS	G	G	HS	HS	G
C	G	G	HS	HS	G	G	HS	HS	G	G	HS	HS	G	G	HS	HS	G	G	LS
B	HS	HS	G	G	HS	HS	G	G	HS	HS	G	G	HS	HS	G	G	HS	HS	G
A	G	G	HS	HS	G	G	HS	HS	G	G	HS	HS	G	G	HS	HS	G	G	LS
Z	0	0	0	0	0	0	0	0	0	0	0	0	0	0	0	0	0	0	0

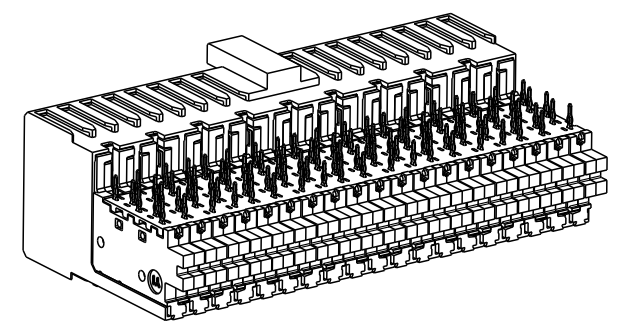
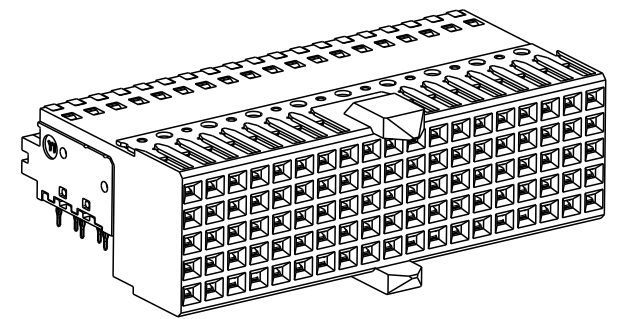
01

19

HS	HIGH SPEED SIGNAL
LS	LOW SPEED SIGNAL
G	GROUND
0	EMPTY



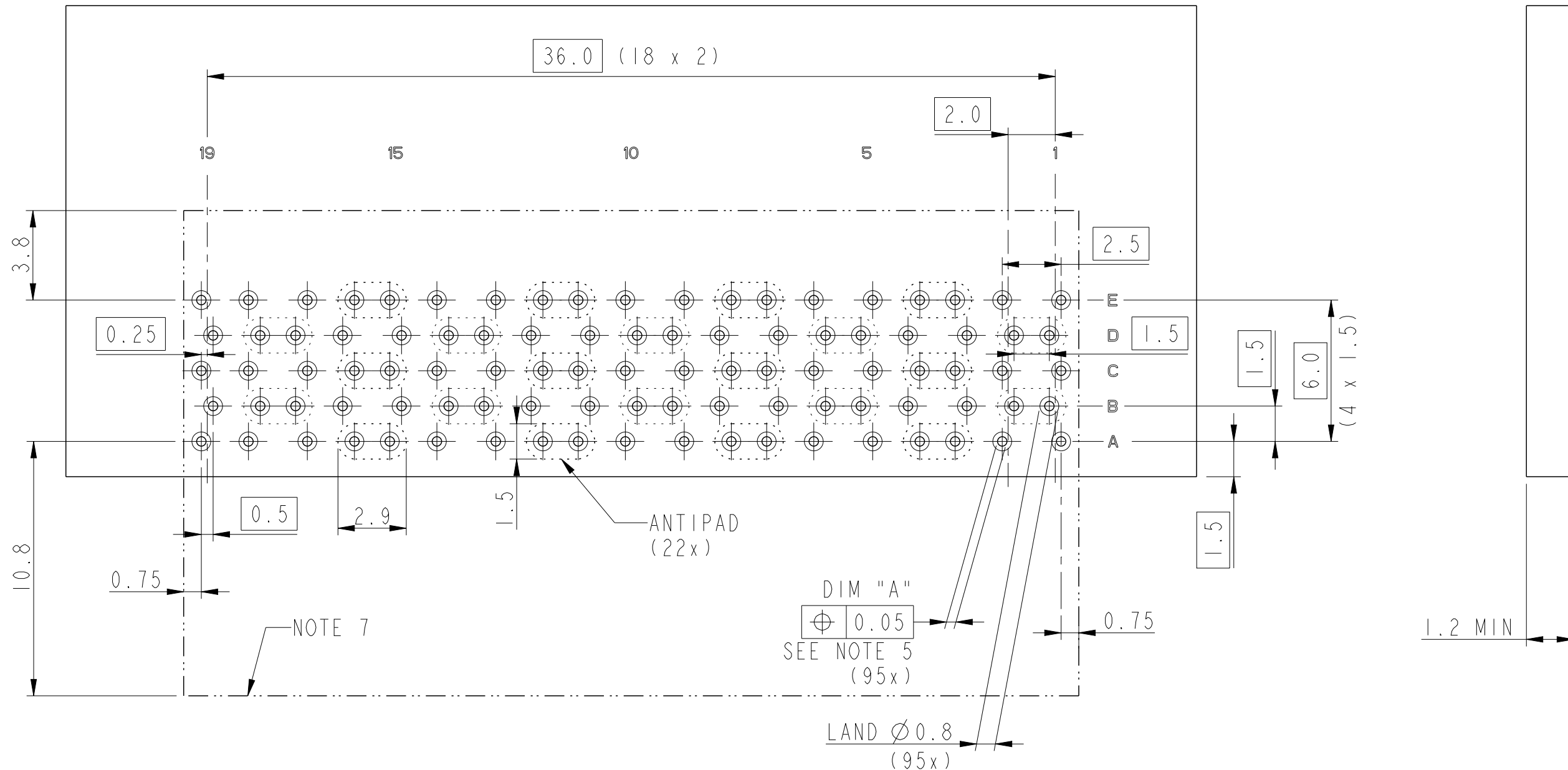
DETAIL A
SCALE 10:1



spec ref	-	dr	Binesh C	2019/11/30	projection	MM	size	A3	scale	2:1
tolerance std	ISO 406 ISO 1101	eng	Binesh C	2019/12/02			ecn no	-	rel level	Released
TOLERANCES UNLESS OTHERWISE SPECIFIED		chr	-	app						
surface	linear	0.X	±0.30		TYPE-ABI9 RECEPTACLE ASSEMBLY		dwg no	10155106	rev	A
		0.XX	±0.20		MILLIPACS HIGH SPEED NON-SHIELDED					
		0.XXX	±0.15		cat. no.	10155106-10xLF				
	angular	0°	±3°							

PART NUMBER:

RECOMMENDED PCB LAYOUT FOR 10155106-10xLF



NOTES:

1. Materials
 - Housing & Imla's: LCP (UL94 V-0)
 - Leadframe: Copper alloy
2. Finish
 - Contact area: Ni underlayer with Au or GXT top layer(Performance Level-2)
 - EON area: Ni underlayer with Sn top layer
3. Mates with IEC 61076-4-101 series 2mm HM headers with contact mating level 1 & 2 in signal rows. Outer shielding row of receptacle can mate with level 1,2 & 3 header contacts.
4. Mounting style: Press-fit, flat rock insertion
5. Refer the table for Recommended plated through hole dimensions.
6. Groundbar positions indicated by "GBx".
7. Connector spacing
8. Ground bar support not required for Non GB version.

RECOMMENDED PLATED THROUGH HOLE DIMENSIONS

DIM	FINISHED HOLE DIA	Cu. THICKNESS	Sn THICKNESS	DRILLED HOLE DIA
A	0.35-0.45	0.02-0.05	0.0008-0.0012	0.45-0.49

spec ref	-	dr	Binesh C	2019/11/30	projection	MM	size	A3	scale	5:1	
tolerance std	ISO 406 ISO 1101	eng	Binesh C	2019/12/02			ecn no		-		
TOLERANCES UNLESS OTHERWISE SPECIFIED		chr	-	-			rel level		Released		
surface	linear	appr	Kuriakose, San	2019/12/02	product family	MILLIPACS	dwg no		10155106	rev	A
	angular				TYPE-ABI9 RECEPTACLE ASSEMBLY						
					MILLIPACS HIGH SPEED NON-SHIELDED						
					cat. no.	Product - Customer Drw		sheet 2 of 2			

Amphenol FCI

© 2016 AFCI