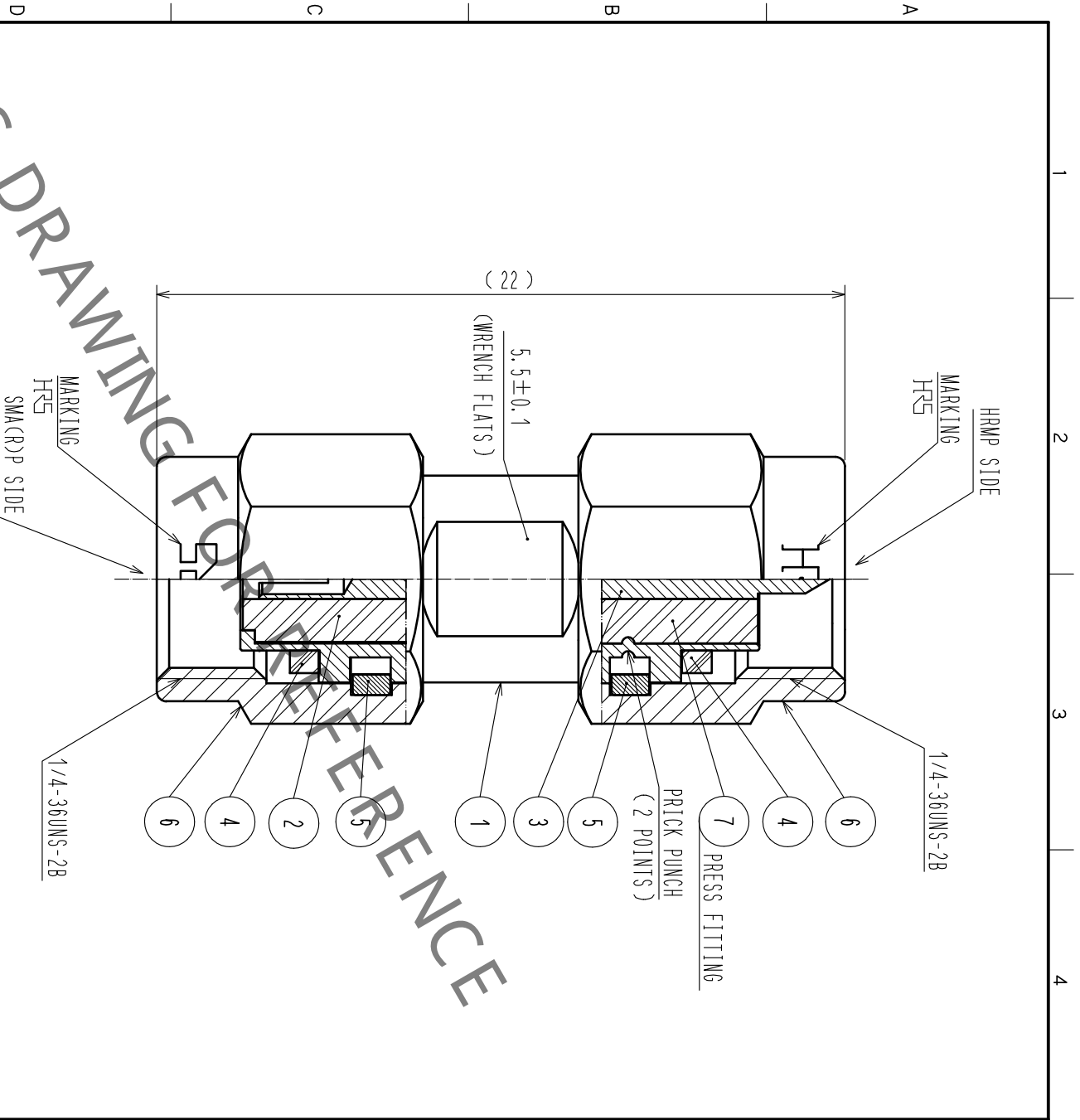


In case of consideration for using Automotive equipment / device which demand high reliability, kindly contact our sales window correspondents.



ROHS COMPLIANT

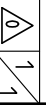
4	SILICON RUBBER						
3	BERYLLIUM COPPER	GOLD PLATING					
2	PTFE						
1	STAINLESS STEEL	PASSIVATED					
NO.	MATERIAL	FINISH .	REMARKS	NO.	MATERIAL	FINISH .	REMARKS
6	PTFE			5	BERYLLIUM COPPER	NICKEL PLATING	
7	STAINLESS STEEL	PASSIVATED					

UNITS	mm	SCALE	5 : 1	COUNT		DESCRIPTION OF REVISIONS	DESIGNED	CHECKED	DATE
-------	----	-------	-------	-------	--	--------------------------	----------	---------	------

APPROVED	KY. SHIMIZU	16.07.20	DRAWING NO.	EDC-366791-00-00
CHECKED	KY. SHIMIZU	16.07.20	PART NO.	HRMP-SMA(R)P
DESIGNED	MH. OGUSU	16.07.20	CODE NO.	CL323-0009-0-00
DRAWN	MH. OGUSU	16.07.20		



HIROSE ELECTRIC CO., LTD.



1