

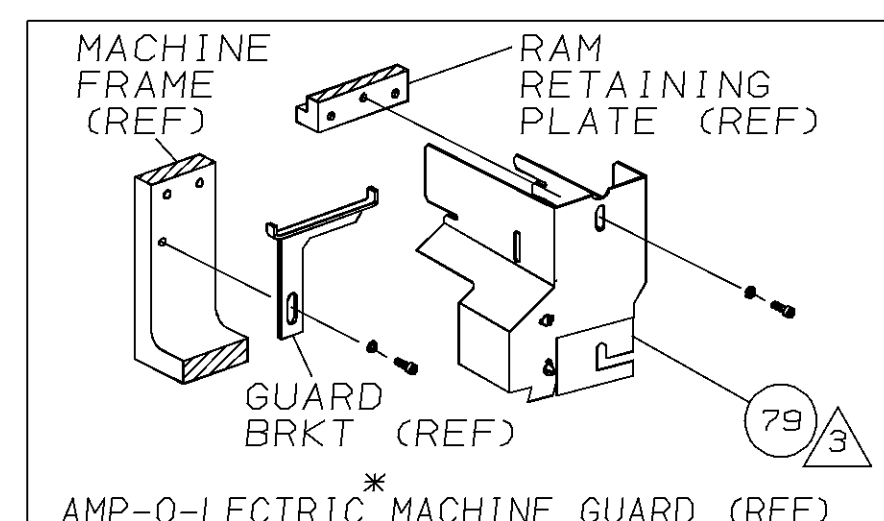
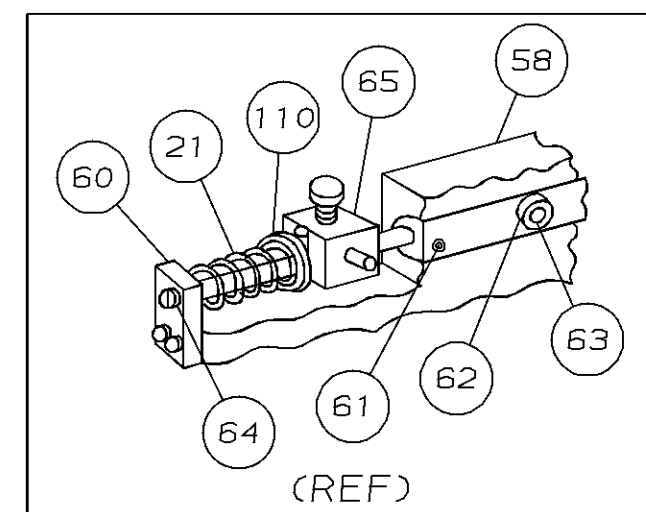
DRAWING MADE IN THIRD ANGLE PROJECTION

567449

567449

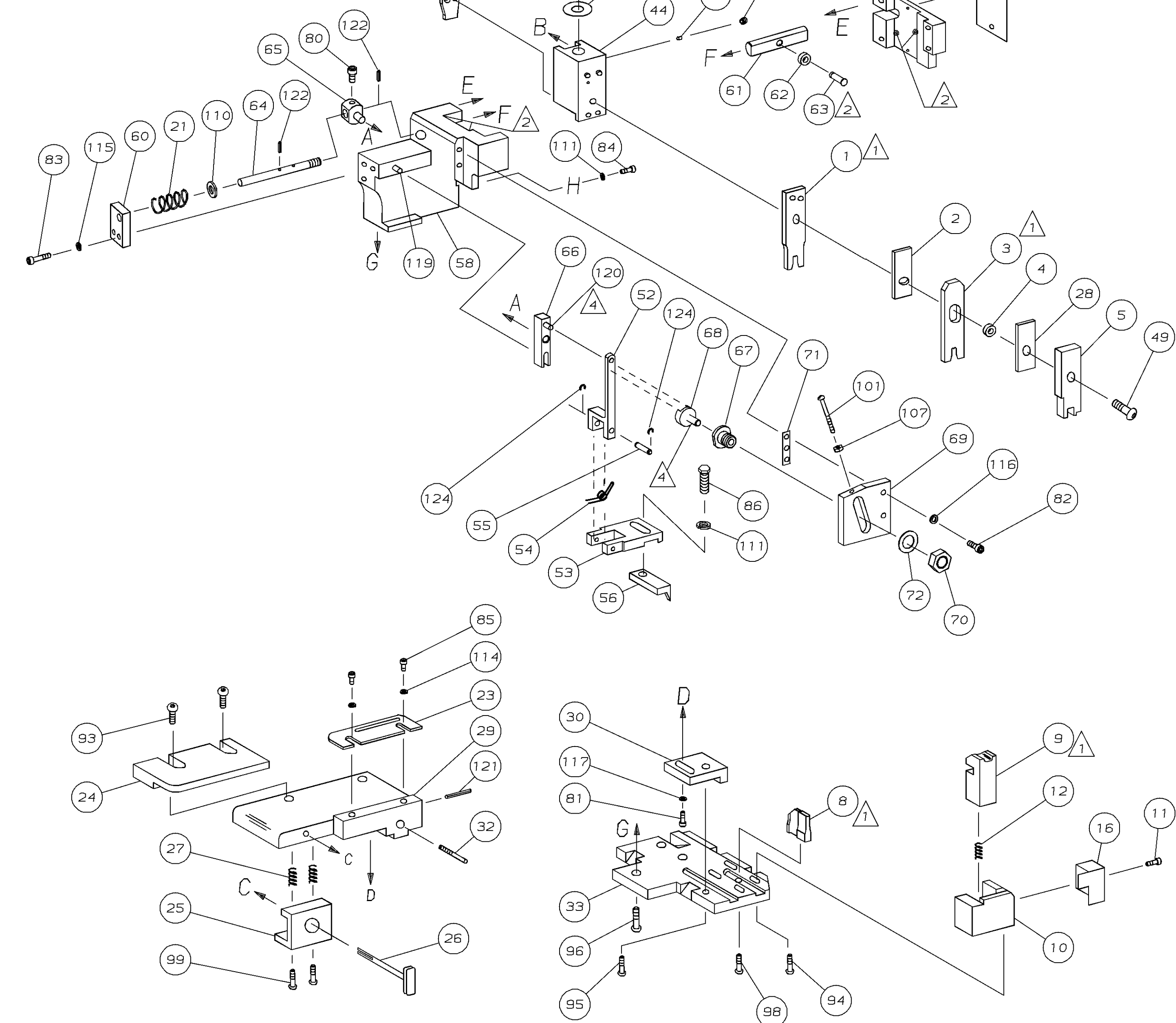
<UT161B>DEPT2230-AMP07567-EDMM00

| PART NUMBER | REV | FIRST USED |
|-------------|-----|------------|
| 567449-1    | E   | 854400-1   |
| 567449-2    | E   | 565435-5   |



| TERMINAL NAME:             |                | CRIMPING DATA  |              |
|----------------------------|----------------|----------------|--------------|
| CONTACT, CRIMP-SNAP        |                | PAD LTR        | CRIMP HEIGHT |
| METRIC INTERCONNECT SYSTEM |                |                | WIRE SIZE    |
|                            | 92007          | A              | .027±.002    |
|                            | 292034         | B              | .025±.002    |
|                            |                | C              | .024±.002    |
|                            |                | D              | .022±.002    |
|                            |                |                | 28 OR 30     |
| CRIMP                      | SIZE           | TYPE           | RANGE        |
| WIRE                       | .052           | F              | 28-22        |
| INSUL                      | .070           | F              | .039-.067    |
|                            | FEED APPL INST | SET UP GAGE    | LAYOUT       |
|                            | .276 AI 8040   | 458637-1       | L1451        |
| WIRE STRIP LENGTH          |                |                |              |
| -1                         | LEADMAKER      | MECH-POST FEED |              |
| -2                         | AMP-O-LECTRIC  | MECH-PRE FEED  |              |

| REF | REF |   | B | 22594-8    | NUT, HEX (1/2-20)           | 70 |
|-----|-----|---|---|------------|-----------------------------|----|
| REF | REF | - | B | 240628-1   | PLATE, ADJUSTMENT           | 69 |
| REF | REF | - | B | 240626-1   | SHAFT, PIVOT                | 68 |
| REF | REF | - | B | 240633-1   | BUSHING                     | 67 |
| REF | REF | - | A | 455680-1   | LEVER, INTERMEDIATE         | 66 |
| REF | REF | - | B | 240629-1   | BLOCK, PIVOT                | 65 |
| REF | REF | - | A | 240632-2   | SCREW, ADJ FEED ROD         | 64 |
| REF | REF | - | B | 240659-3   | PIN, CAM ROLLER             | 63 |
| REF | REF | - | B | 240658-1   | ROLLER, CAM                 | 62 |
| REF | REF | - | B | 454398-2   | ROD, FEED                   | 61 |
| REF | REF | - | A | 454178-1   | GUIDE, FEED ROD             | 60 |
| REF | REF | - | C | 454220-1   | CAP, RAM                    | 59 |
| REF | REF | - | D | 454485-1   | HOUSING                     | 58 |
|     |     |   |   |            |                             | 57 |
|     |     |   |   |            |                             | 56 |
| 1   | 1   | - | B | 690542-2   | PAWL, FEED                  | 55 |
| REF | REF | - | B | 240624-1   | PIN, FEED FINGER            | 54 |
| REF | REF | - | B | 691499-1   | SPRING, FEED FINGER         | 53 |
| REF | REF | - | B | 690541-1   | HOLDER, FEED FINGER         | 52 |
| REF | REF | - | A | 455679-1   | LEVER, TERMINAL FEED ARM    | 51 |
|     |     |   |   |            |                             | 50 |
|     |     |   |   |            |                             | 49 |
| 1   | 1   | - | A | 7-21002-9  | BOLT, CRIMPER (5/16x1.00)   | 48 |
| 1   | -   | - | B | 690602-5   | CAM, PRE-FEED 1 1/8 ST      | 47 |
| -   | 1   | - | B | 690501-4   | CAM, POST-FEED 1 5/8 ST     | 46 |
| 1   | 1   | - | B | 459456-1   | APPLICATOR, BASIC (SUBASSY) | 45 |
| 1   | 1   | - | A | 690191-1   | PLUG, NYLON                 | 44 |
| 1   | 1   | - | C | 455673-3   | RAM                         | 43 |
| 1   | 1   | - | A | 690125-1   | WASHER, LAMINATED           | 42 |
| 1   | 1   | - | A | 690124-1   | WASHER, RAM                 | 41 |
|     |     |   |   |            |                             | 40 |
| 2   | 2   | - | A | 23241-6    | BALL, STEEL                 | 39 |
| 2   | 2   | - | A | 690170-1   | SPRING, COMPRESSION         | 38 |
| 1   | 1   | - | C | 690142-1   | DISC, INSULATION            | 37 |
| 1   | 1   | - | B | 5-690692-2 | DISC, WIRE                  | 36 |
| 1   | 1   | - | A | 22480-5    | WASHER, SPRING              | 35 |
| 1   | 1   | - | B | 690212-1   | POST, RAM                   | 34 |
|     |     |   |   |            |                             | 33 |
| REF | REF | - | D | 455675-1   | PLATE, BASE                 | 32 |
| 1   | 1   | - | A | 690432-3   | SCREW, ADJUSTMENT           | 31 |
|     |     |   |   |            |                             | 30 |
| REF | REF | - | B | 455689-1   | BLOCK, STRIP GUIDE ADJ      | 29 |
| 1   | 1   | - | C | 455671-1   | PLATE, STRIP GUIDE          | 28 |
| 1   | 1   | - | C | 455888-4   | SPACER, FRONT SHEAR DEP     | 27 |
| 2   | 2   | - | A | 1-22284-0  | SPRING, DRAG                | 26 |
| 1   | 1   | - | B | 690546-1   | LEVER, DRAG RELEASE         | 25 |
| 1   | 1   | - | B | 240792-1   | DRAG, TERMINAL              | 24 |
| 1   | 1   | - | D | 6-690504-4 | GUIDE, STRIP (REAR)         | 23 |
| 1   | 1   | - | A | 690438-1   | GUIDE, STRIP (FRONT)        | 22 |
| 1   | 1   | - | B | 690472-6   | STRIPPER                    | 21 |
| REF | REF | - | A | 4-22284-9  | SPRING, FEED RETURN         | 20 |
|     |     |   |   |            |                             | 19 |
|     |     |   |   |            |                             | 18 |
|     |     |   |   |            |                             | 17 |
|     |     |   |   |            |                             | 16 |
| 1   | 1   | - | B | 691667-1   | GUARD, CHIP (FRONT)         | 15 |
|     |     |   |   |            |                             | 14 |
|     |     |   |   |            |                             | 13 |
| 1   | 1   | - | A | 5-22280-0  | SPRING, SHEAR               | 12 |
| 1   | 1   | - | B | 690461-1   | STOP, SHEAR                 | 11 |
| 1   | 1   | - | C | 690459-1   | HOLDER, SHEAR (FRONT)       | 10 |
| 1   | 1   | - | C | 462006-1   | SHEAR, FLOAT (FRONT)        | 9  |
| 1   | 1   | - | C | 3-854014-6 | ANVIL                       | 8  |
|     |     |   |   |            |                             | 7  |
|     |     |   |   |            |                             | 6  |
| 1   | 1   | - | C | 2-455889-0 | DEPRESSOR, SHEAR (FRONT)    | 5  |
| 1   | 1   | - | B | 2-238011-0 | SPACER, BLOCK CRIMPER       | 4  |
| 1   | 1   | - | C | 7-456134-2 | CRIMPER, INSULATION         | 3  |
| 1   | 1   | - | C | 455888-1   | SPACER, CRIMPER             | 2  |
| 1   | 1   | - | C | 90464-2    | CRIMPER, WIRE               | 1  |



| REF | REF |   | A | 21045-3    | RING, RET "C" (φ.187) FD FING PIN  | 124 |
|-----|-----|---|---|------------|------------------------------------|-----|
|     |     |   |   |            |                                    | 123 |
| REF | REF | - | A | 5-21028-1  | PIN, SLT SPR (φ.125x.50) ADJ ROD   | 122 |
| 1   | 1   | - | A | 4-21028-0  | PIN, SLT SPR (φ.093x.75) ST GDE PL | 121 |
| REF | REF | - | A | 1-21030-1  | PIN, DOWEL (φ.187x.50) LEVER       | 120 |
| REF | REF | - | A | 1-21030-6  | PIN, DOWEL (φ.187x1.25) HOUSING    | 119 |
|     |     |   |   |            |                                    | 118 |
| 1   | 1   | - | A | 21024-5    | WASHER, LOCK (#10) ADJ BLOCK       | 117 |
| REF | REF | - | A | 21024-5    | WASHER, LOCK (#10) ADJ PLATE       | 116 |
| REF | REF | - | A | 21024-5    | WASHER, LOCK (#10) FEED GDE ROD    | 115 |
| 2   | 2   | - | A | 21024-2    | WASHER, LOCK (#4) FRONT STP GUIDE  | 114 |
|     |     |   |   |            |                                    | 113 |
|     |     |   |   |            |                                    | 112 |
| 4   | 4   | - | A | 21024-4    | WASHER, LOCK (#8) STRIPPER         | 111 |
| REF | REF | - | A | 21899-4    | WASHER, FLAT (φ5/16) SCREW ADJ     | 110 |
| 2   | 2   | - | A | 2-21000-5  | SCR, SKT CAP (8-32x.25)            | 109 |
| 1   | 1   | - | B | 2-690518-4 | HOLD DOWN                          | 108 |
| REF | REF | - | A | 21018-5    | NUT, HEX (6-32) FEED ADJ           | 107 |
|     |     |   |   |            |                                    | 106 |
|     |     |   |   |            |                                    | 105 |
|     |     |   |   |            |                                    | 104 |
| 1   | 1   | - | A | 21009-2    | SCR, SKT SET (1/4-20x.25 LW) RAM   | 103 |
| 2   | 2   | - | A | 21017-2    | SCR, DRIVE (#2x.19) ID PLATE       | 102 |
| REF | REF | - | A | 6-23715-5  | SCR, PAN HD (6-32x1.50) FEED ADJ   | 101 |
| 1   | 1   | - | B | 461264-1   | PLATE, IDENTIFICATION              | 100 |
| 2   | 2   | - | A | 3-21002-0  | SCR, BHC (10-32x.88) DRAG          | 99  |
| 1   | 1   | - | A | 22733-8    | SCR, BHC (8-32x.38 LW) ANVIL       | 98  |
| REF | REF | - | A | 2-21002-9  | SCR, BHC (10-32x.75) CAP           | 97  |
| REF | REF | - | A | 2-22733-8  | SCR, BHC (1/4-20x.62) HOUSING      | 96  |
| REF | REF | - | A | 2-21002-7  | SCR, BHC (10-32x.50) S6 ADJ BLOCK  | 95  |
| 2   | 2   | - | A | 2-21002-2  | SCR, BHC (8-32x.50) SHEAR          | 94  |
| 2   | 2   | - | A | 2-21002-1  | SCR, BHC (8-32x.38) R STRIP GUIDE  | 93  |
|     |     |   |   |            |                                    | 92  |
| 1   | 1   | - | A | 1-21002-7  | SCR, BHC (6-32x.38) CAM            | 91  |
|     |     |   |   |            |                                    | 90  |
|     |     |   |   |            |                                    | 89  |
|     |     |   |   |            |                                    | 88  |
|     |     |   |   |            |                                    | 87  |
| 1   | 1   | - | A | 2-22603-0  | SCR, HEX HD (8-32x.31) FEED FINGER | 86  |
| 2   | 2   | - | A | 1-21000-3  | SCR, SHC (4-40x.25) F ST GUIDE     | 85  |
| 1   | 1   | - | A | 2-21000-7  | SCR, SHC (8-32x.50) STRIPPER       | 84  |
| REF | REF | - | A | 3-21000-7  | SCR, SHC (10-32x.75) FEED ROD 6D   | 83  |
| REF | REF | - | A | 3-21000-6  | SCR, SHC (10-32x.62) FD ADJ BLK    | 82  |
| 1   | 1   | - | A | 3-21000-4  | SCR, SHC (10-32x.38) S6 ADJ BL     | 81  |
| REF | REF | - | A | 3-21000-4  | SCR, SHC (10-32x.38) PIVOT BLK     | 80  |
| REF | -   | - | B | 455749-1   | GUARD, WINDOW                      | 79  |
|     |     |   |   |            |                                    | 78  |
|     |     |   |   |            |                                    | 77  |
|     |     |   |   |            |                                    | 76  |
|     |     |   |   |            |                                    | 75  |
| 2   | 2   | - | A | 690603-1   | SPRING, ASSIST                     | 74  |
| 2   | 2   | - | A | 23030-1    | SCR, SHC (6-32x.25) CP DISC        | 73  |
| REF | REF | - | A | 458109-1   | WASHER, SPECIAL                    | 72  |
| REF | REF | - | A | 690517-1   | SPACER                             | 71  |

| QTY | REQD | PER | ASSY | U/M | DWG | SIZE | PART NO | DESCRIPTION | ITEM NO |
|-----|------|-----|------|-----|-----|------|---------|-------------|---------|
| -2  | -1   |     |      |     |     |      |         |             |         |

| QTY | REQD | PER | ASSY | U/M | DWG | SIZE | PART NO | DESCRIPTION | ITEM NO |
|-----|------|-----|------|-----|-----|------|---------|-------------|---------|
| -2  | -1   |     |      |     |     |      |         |             |         |

THIS DRAWING IS A CONTROLLED DOCUMENT

THIS DRAWING IS UNPUBLISHED. FEB 18, 1998 RELEASED FOR PUBLICATION BY AMP INCORPORATED. ALL INTERNATIONAL RIGHTS RESERVED. © COPYRIGHT 1998

LOC A DIST 66

LEADMAKER T TERMINATING UNIT

AMP-O-LECTRIC K TERMINATING UNIT

- 1 RECOMMENDED SPARE PARTS.
- 2 GREASE LIGHTLY.
- 3 GUARD MUST BE IN PLACE WHEN OPERATING APPLICATOR IN AMP-O-LECTRIC MACHINE.
- 4 LUBRICATE DAILY USING NO. 20 MACHINE OIL.

5. ITEMS WITH QTY OF REF SPECIFIED (EXCEPT ITEM 79) ARE USED ON ITEM 46.