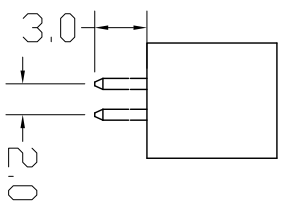
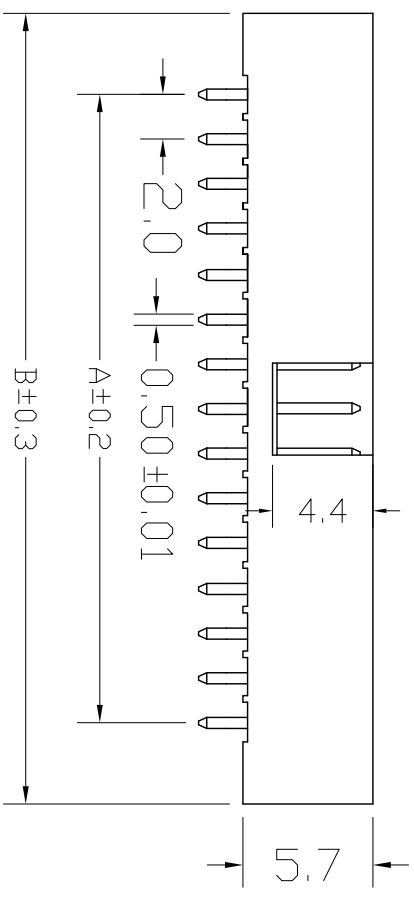
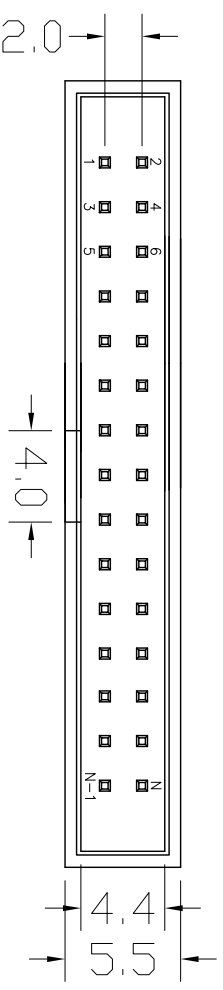


REV.	DESCRIPTION	DATE
A	RELEASE	2012.11.12

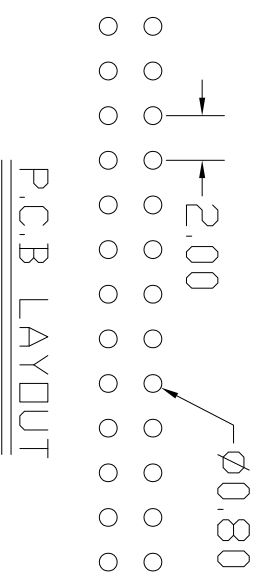
NOTES:  
 Insulator Material: Nylon-6T, UL 94V-0  
 Contact Plating: TIN, 80-100 $\mu$ "  
 Contact Material: Brass

Current Rating : 1A AC,DC  
 Contact Resistance: 20M $\Omega$  Max.  
 Dielectric Withstanding: AC 500V  
 Insulator Resistance: 1000M $\Omega$  Min.  
 Operating Temp.: -40°C~+105°C



NUMBER OF POSITIONS	DIMENSIONS	
	A	B
06	4.00	13.30
08	6.00	15.30
10	8.00	17.30
12	10.00	19.30
14	12.00	21.30
16	14.00	23.30
18	16.00	25.20
20	18.00	27.30
24	22.00	31.30
26	24.00	33.30
30	28.00	37.30
34	32.00	41.30
40	38.00	47.30
44	42.00	51.30
50	48.00	57.30
60	58.00	67.30
64	62.00	71.30

RoHS



UNLESS TOLERANCE		DRAW BY		SCALE	SHEET	UNIT	DRAW NO:	REV: A
GENERAL	ANGLE	DESIGN BY	CHECK BY					
X: ± 0.30	X°: ± 3.0°			1:1	1/1	MM	3120-XX-0100-99	
.X: ± 0.20	.X°: ± 2.0°							
.XX: ± 0.15	.XX°: ± 1.0°							
.XXX: ± 0.08	.XXX°: ± 0.5°							

Cnc Tech,LLC

Port NO.:  
3120-XX-0100-99

