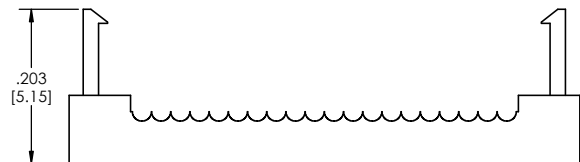
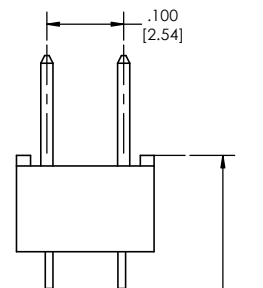
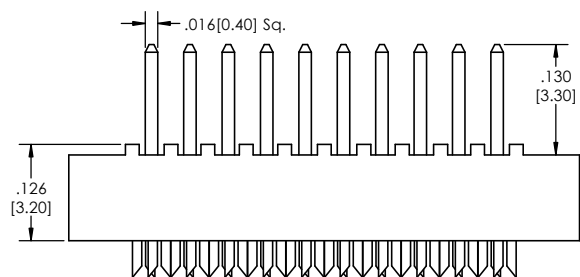
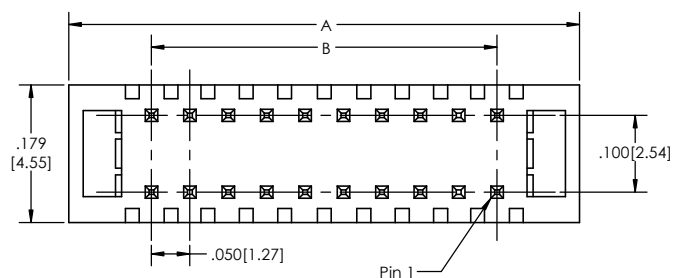
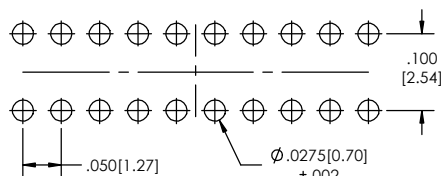


Recommended P.C. Board Layout
SCALE 8:1



IDP-6 **XX** - **D** - **02** - **T** - **XXX** - **LF**
 (A) (B) (C) (D) (E) (F)

- A. Pins Per Row
- 5 through 50
- B. Row Specification
- D= Double Row
- C. Style
- 02= Tail Length .130[3.3mm]
- D. Plating Options
- See Plating Options below
- E. Polarized position
- 010-100
- Leave blank if not needed
- F. Lead free

Plating options
T - Matte Tin all over

Specifications:
 Current Rating: 1.0 Ampere
 Insulation Resistance: 1000 m Ohms Min.
 Dielectric Withstanding: 250V AC for one minute
 Contact Resistance: 30M Ohms Max.
 Operation Temperature: -40°C to +105°C
 Terminated with: .025" [0.635mm] pitch flat ribbon cable

Materials:
 Contact Material: Phosphor Bronze
 Insulator Material: PBT, glass reinforced, rated UL 94V-0

Pins Per Row	Dimensions	
	A	B
5	.415[10.55]	.200[5.08]
10	.665[16.90]	.450[11.43]
13	.815[20.71]	.600[15.24]
15	.915[23.25]	.700[17.78]
17	1.015[25.79]	.800[20.32]
20	1.165[29.60]	.950[24.13]
25	1.415[35.95]	1.200[30.48]
30	1.665[42.30]	1.450[36.83]
34	1.865[47.38]	1.650[41.91]
40	2.165[55.00]	1.950[49.53]
50	2.665[67.70]	2.450[62.23]

Tails may be clipped to achieve specific dimensions.

Products cut to specific sizes are uncancellable/ nonreturnable.
 Parts are subject to change without notice.



PROPRIETARY AND CONFIDENTIAL
 THE INFORMATION CONTAINED IN THIS DRAWING IS THE SOLE PROPERTY OF Major League Electronics. ANY REPRODUCTION IN PART OR AS A WHOLE WITHOUT THE WRITTEN PERMISSION OF Major League Electronics IS PROHIBITED.

UNLESS OTHERWISE SPECIFIED:		NAME		DATE	
DIMENSIONS ARE IN INCHES		DRAWN	EOW	04/14/14	
TOLERANCES:		CHECKED	GWE	04/14/14	
ONE DECIMALS ±.100		ENG APPR.			
TWO DECIMAL ±.100		MFG APPR.			ADDRESS: 2533 Centennial Blvd. Jeffersonville, IN 47130 Phone: 812-670-4174 Fax: 812-670-4175 E-Mail: mle@mlelectronics.com
THREE DECIMAL ±.005		INTERPRET GEOMETRIC TOLERANCING PER:			TITLE: IDP-6 Series
FOUR DECIMAL ±.002		MATERIAL			SIZE DWG. NO.
NEXT ASSY	USED ON	FINISH			REV
APPLICATION		DO NOT SCALE DRAWING			A