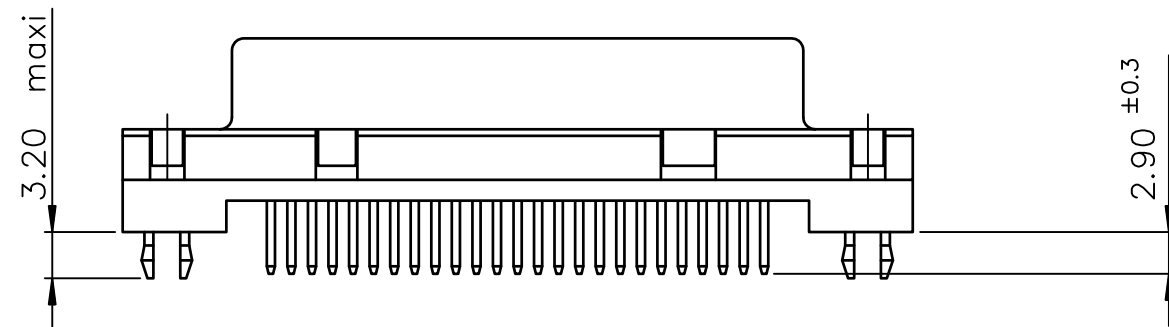
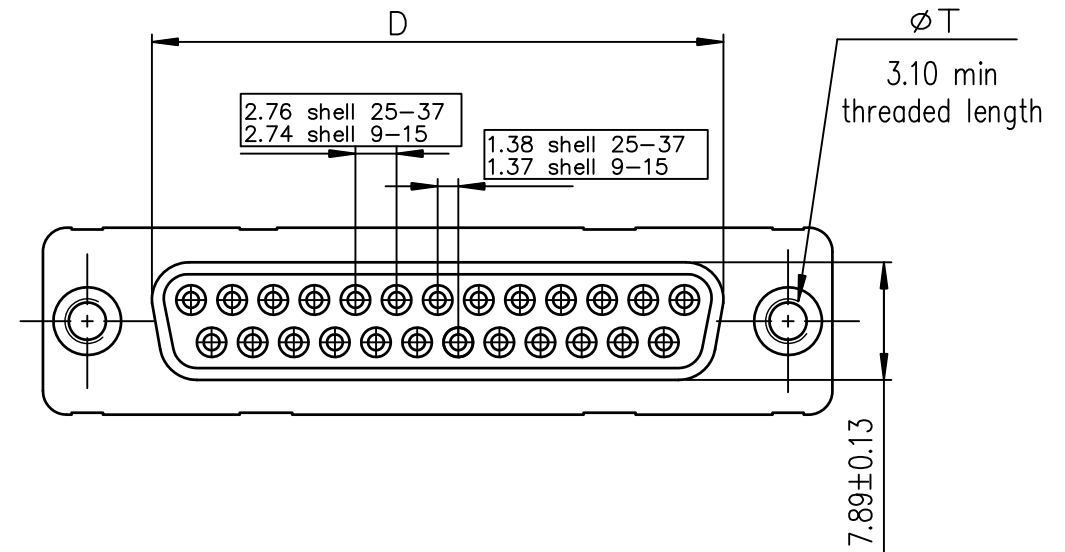
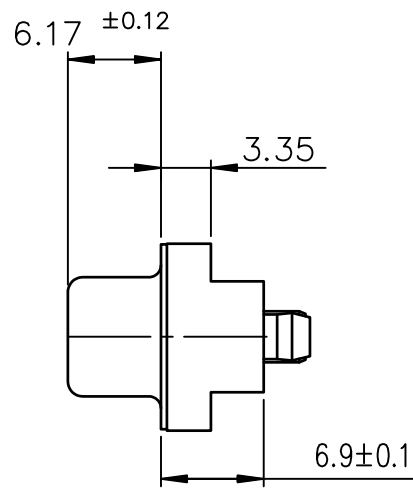
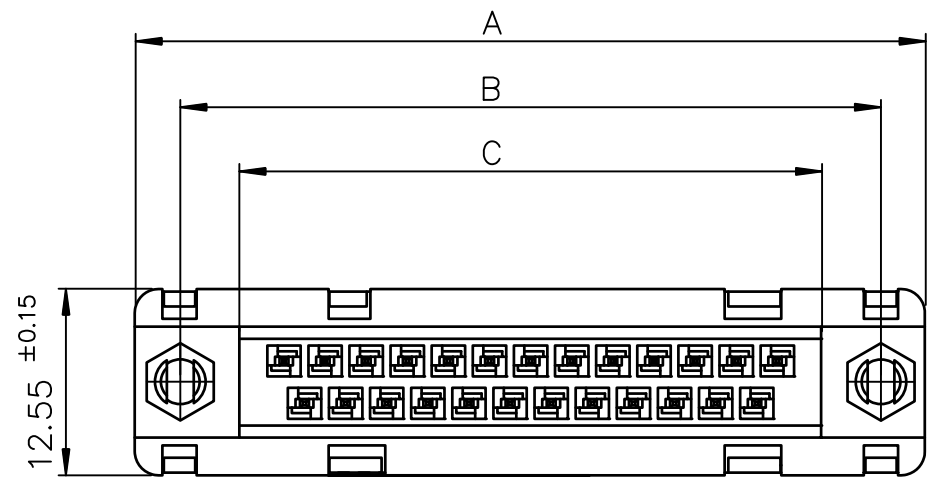




Copyright FCI



FCIconnect.com

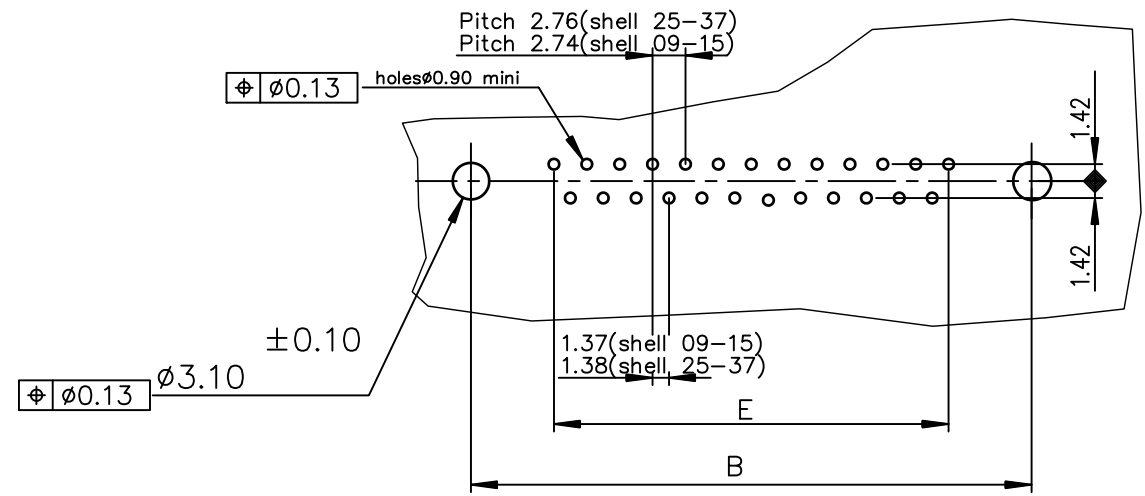


LEAD FREE PART NUMBERS

SHELL	A±0.38	B±0.12	C±0.10	D±0.25	E±0.07	Flash Au	0.76µ Au
09	30.81	24.99	16.96	16.21	10.96	D09S34A4G*00LF	D09S34A6G*00LF
15	39.14	33.32	25.18	24.54	19.18	D15S34A4G*00LF	D15S34A6G*00LF
25	53.03	47.04	39.12	38.25	33.12	D25S34A4G*00LF	D25S34A6G*00LF
37	69.32	63.50	55.68	54.71	49.68	D37S34A4G*00LF	D37S34A6G*00LF

L --> ØT=M3
 X --> ØT=UNC 4-40

PC card drilling dimensions(after plating)
 (thickness 1.60±0.20mm)



GENERAL CHARACTERISTICS AND ROHS INFORMATIONS:
 SEE DRAWING C01-8646-0000

mat'l. code		surface ISO 1302		tolerance ISO 406 ISO 1101		projection		product family	
-		✓				MM		D-SUB	
ltr	ecn no	dr	date	tolerances unless otherwise specified		MM		title	
F	ELX-I-21654	AB	2015-10-26			MM		FEMALE DD WT FOOTPRINT 6.9 STRAIGHT SOLDER TYPE	
				angles	linear	scale 2:1		dwg no	
				0°±2'	.0±0.1 .00±0.1 .000±0.1			sheet 1 of 1	
				dr	MASSON	2000-07-26		size	
				enr	ALIAS BABU	2015-10-26		A3	
				chr	MITHUN PAUL	2015-10-26		C01-8646-0717	
				app	BIJU K PAUL	2015-10-26		type Product Customer Drawing	
sheet index	revision sheet	F	1						