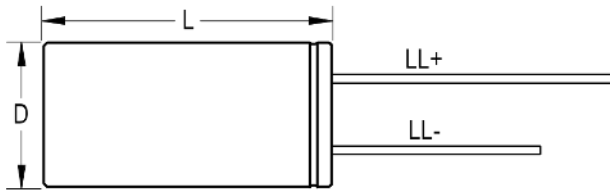
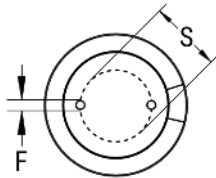


SIDE VIEW



TERMINAL END VIEW



Click [here](#) for the 3D model.

Dimensions

D	10mm +/-0.5mm
L	12mm +1.5mm
S	5mm +/-0.5mm
LL Negative	15mm MIN
LL Positive	20mm MIN
F	0.6mm NOM

Packaging Specifications

Packaging	Bulk, Bag
Packaging Quantity	4000

General Information

Series	ESW
Dielectric	Aluminum Electrolytic
Description	LowZ Single Ended Aluminum Electrolytic
Features	Low Z
RoHS	Yes
Lead	Wire Leads
AEC-Q200	No

Specifications

Capacitance	1,000 uF
Capacitance Tolerance	20%
Voltage DC	6.3 VDC, 8 VDC (Surge)
Temperature Range	-40/+105°C
Rated Temperature	105°C
Life	5000 Hrs
Dissipation Factor	22%
Ripple Current	755 mAmps (100kHz 105C)
Leakage Current	63 uA (2min 20°C)
Impedance Ratio at -25C	4
Impedance Ratio at -40C	8