

applicom™ Profibus Network Interface Cards

PCI Universal, PCI Express

molex®

Quickly and easily connect your PC-based industrial applications to the industrial world with applicom™ intelligent communication solutions

applicom™ intelligent communication offers complete and ready-to-use solutions that cover more than 40 protocols within a wide choice of industrial networks and fieldbuses including Ethernet, Profibus, WorldFIP and Serial Links. These communication solutions connect PC-based applications (HMI, SCADA, MES, custom applications) to devices including programmable controllers, I/O modules, Panel PCs, process instruments and other industrial equipment.

With applicom™ smart built-in processor technology, each network interface card (NIC) is able to execute all management and processing (polling, frame management, etc) of communication protocols without using a computer's processing (CPU) time; resulting in extremely fast, efficient application performance.

applicom™ solutions are recommended for SCADA/HMI, and custom automation control systems which require powerful data acquisition to manage a large volume of I/O data. applicom™ cards are successfully installed around the world in sectors as varied as oil and gas, automotive, food processing, technical building management, and transportation.



Support of Windows® 8 and 2012 Server

Features and Benefits

Fast data acquisition between PC-based applications and industrial devices connected to Profibus

Enables quick return-of-investment; single development library and OPC server reduce the time required to learn and integrate applicom™ products in to system architectures

On-board co-processor

Eliminates data bottlenecks, ensuring delivery of time critical information; simultaneously run all Profibus protocols

Integrated package includes all protocols

Provides all-in-one solution for customers

Combine several cards (up to 8) and run simultaneously from 1 to 32 protocols on a single PC

Optimum choice for HMI/SCADA applications

Run all Profibus protocols simultaneously

Enables fast integration of industrial communication into applications (configuration, diagnostic, data servers, development libraries)

Compatible with:
Simatic S7 Series (S7-300, S7-400)
Simatic S5 Series (95U, 115U, 135U, 155U)

Save commissioning time; ONE configuration and ONE diagnostic tool whatever the protocols used

Applications

Supervision / Scada to monitor plant

HMI; Acquisition of process data on panel pc to manage complex machine

Active front-end acquisition for building management systems such as fire detection, access control, power distribution, HVAC

Measures and bench tests for process simulation, car engine validation, and experimental prototypes

Design tools for custom solutions such as a gateway feature, time table management, alarming, etc.

applicom™ Profibus Network Interface Cards

PCI Universal, PCI Express



Specifications

PRODUCT PACKAGE

Engineering Tools
 Configuration console
 Test and diagnostic tools

Data Servers
 OPC DA v3.0 and v2.05
 Wonderware DAServer
 Wonderware I/O (SuiteLink/FastDDE)

Includes Development Libraries
 Visual Studio (VB/CC++/C samples),
 MS Visual Studio 2005 (VB.Net & C# samples),
 installed on local disc
 Other unsupported samples (Borland Delphi,
 Windev and National Instruments)
 (LabWindows CVI, LabVIEW/VI) on CD Rom only

Supported OS:
 Windows® (32-bit & 64-bit): 8, 2012 Server, 7,
 2008 Server, Vista, 2003 Server

TECHNICAL DATA

Bus Format
 PCI Universal bus 3.3V/5V (PCI-X compatible)
 PCI Express 1x

Hardware Plug & Play
 AMD SC520
 16 Mb SDRAM
 4 Mb Flash Memory
 Consumption: 5.5W

PROTOCOLS

PCU1500PFB and PCIE1500PFB card
 Profibus DP-V0 Master Class-1 & Class-2
 S7/MPI Master (Siemens S7)
 PPI/PPI+ Master
 FDL for S5 Master (Siemens S5)
 Send/Receive on FDL (Develop your free
 messaging on Profibus)

PCU1500S7 and PCIE1500S7 card
 S7/MPI Master (Siemens S7)
 PPI/PPI+ Master
 Send/Receive on FDL

COMMUNICATION PORTS

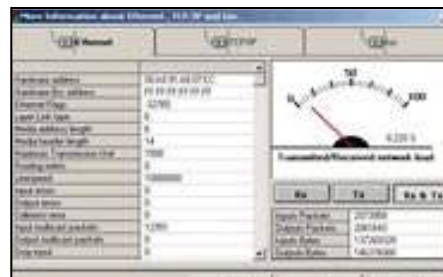
1 Profibus port
 D-Sub, 9pin, female
 2 leds (TX/RX)
 RS485 with galvanic insulation (500 V)
 9.6 Kbps to 1.5 Mbps

CONFORMANCES

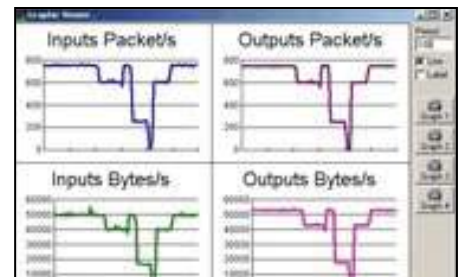
CE
 RoHS
 OPC Certified
 PCI Express certified
 Rockwell Encompass
 Schneider Collaborative



Engineering Console



OPC Server



Diagnostic Tools

Ordering Information

Order No.	Engineering No.	Description
112011-0004	APP-PFB-PCU-C	applicom™ PCU1500PFB PCI Network Interface Card for Profibus
112011-5026	APP-PFB-PCIE	applicom™ PCIE1500PFB PCI Express Network Interface Card for Profibus
112011-0006	APP-PS7-PCU-C	applicom™ PCU1500S7 PCI Network Interface Card for Profibus Simatic S7
112011-5027	APP-PS7-PCIE	applicom™ PCIE1500S7 PCI Express Network Interface Card for Profibus Simatic S7

Windows® and the Windows logo are trademarks of the Microsoft group of companies
 PROFIBUS is a trademark of PROFIBUS International
 PCI Universal, PCI Express and the PCI Express logo are registered trademarks of PCI-SIG®
 Encompass is a trademark of Rockwell Automation

www.molex.com/link/bradnics.html