

PB400 SERIES PUSHBUTTON SWITCH

ANTI-VANDAL SWITCHES
 DETECTOR SWITCHES
 DIP SWITCHES
 KEYLOCK SWITCHES
 NAVIGATION SWITCHES
PUSHBUTTON SWITCHES
 ROCKER SWITCHES
 ROTARY SWITCHES
 SLIDE SWITCHES
 SNAP ACTION SWITCHES
 TACTILE SWITCHES
 TOGGLE SWITCHES
 CAP OPTIONS



APPLICATIONS / MARKETS



Computer Peripherals



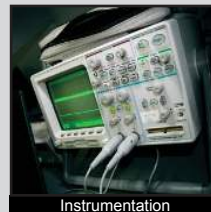
Telecommunication



Security Devices



Consumer Electronics



Instrumentation



Testing Equipment

RoHS

SPECIFICATIONS

Electrical Rating: 3A @ 30 VDC
Electrical Life: 6,000 Cycles
Contact Resistance: 30mΩ Max. Initial
Insulation Resistance: 500MΩ Min. @ 500VDC
Dielectric Strength: 500VAC for 1 minute
Operating Temperature: -5°C to 60°C
Terminal: Copper, Silver Plated
Travel: Switch to make: 1.8mm
 Latch: 2.2mm (Latching)
 Full Actuation: 3.2mm
Contact Arrangement: DPST
Actuation Force: 3N~7N

FEATURES & BENEFITS

- Low cost
- Right Angle pushbutton switch
- DPST
- Momentary or Latching function
- 3.2mm travel
- Optional black cap

PART NUMBER CONFIGURATOR

Series



PB400

Mechanical Configuration



EE - Latching
 OA - Momentary

Contact Material



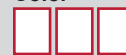
Q - Silver

Cap



X - No Cap
 R1 - Cap (8.8mm)

Cap Color



BLK - Black

Specifications subject to change without notice 12.19.2017



E-SWITCH®

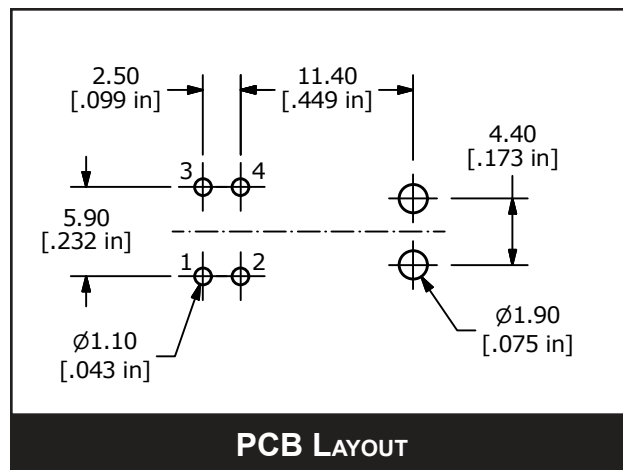
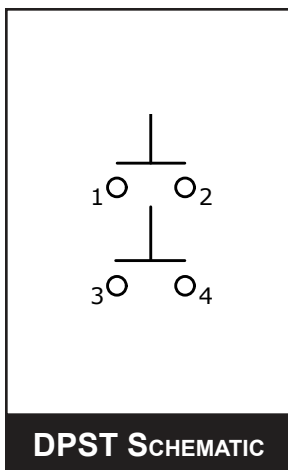
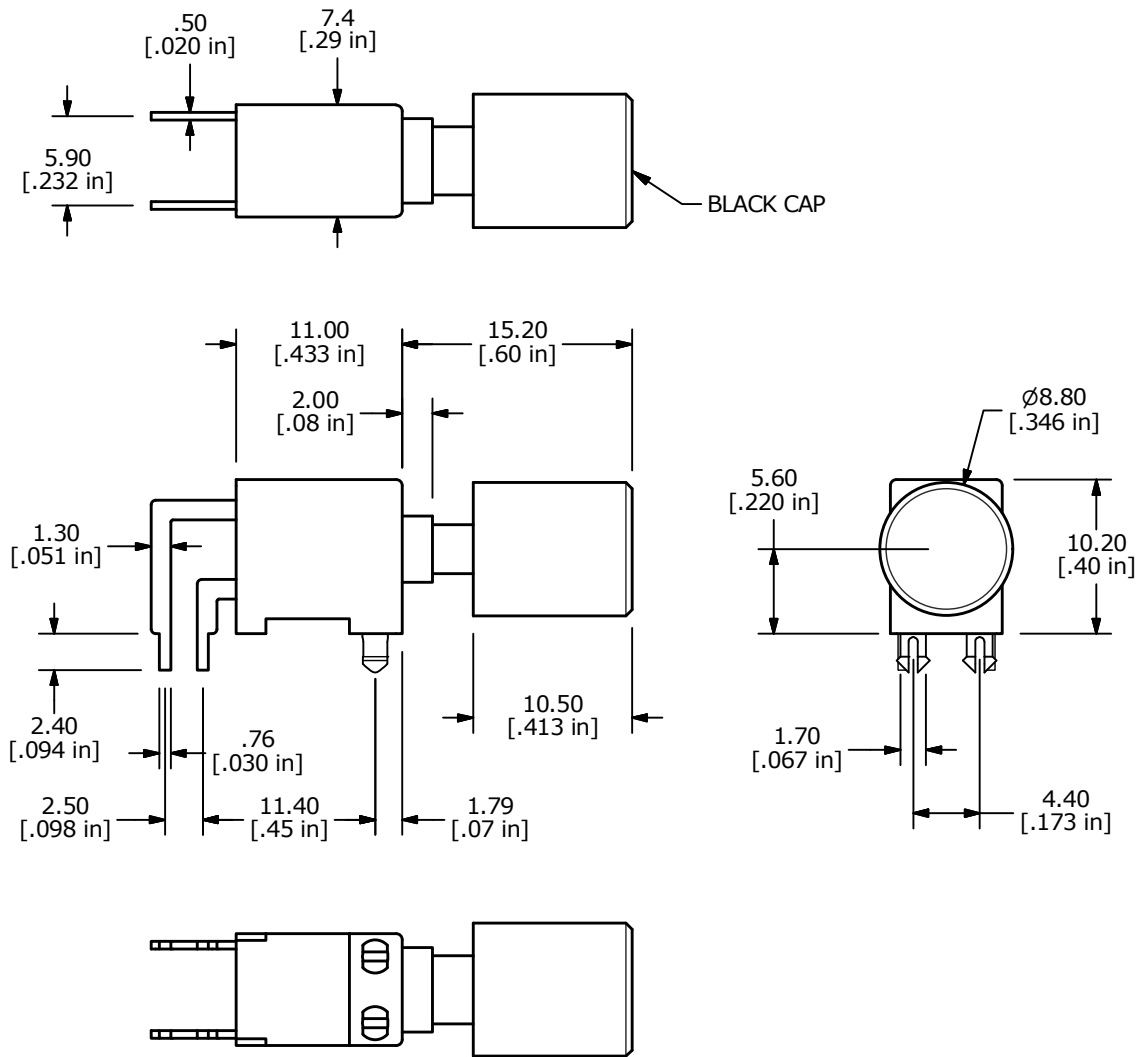
www.e-switch.com

800.867.2717

1

PB400 SERIES PUSHBUTTON SWITCH

BODY DIMENSIONS - WITH CAP



ANTI-VANDAL SWITCHES
DETECTOR SWITCHES
DIP SWITCHES
KEYLOCK SWITCHES
NAVIGATION SWITCHES
PUSHBUTTON SWITCHES
ROCKER SWITCHES
ROTARY SWITCHES
SLIDE SWITCHES
SNAP ACTION SWITCHES
TACTILE SWITCHES
TOGGLE SWITCHES
CAP OPTIONS

PB400 SERIES PUSHBUTTON SWITCH

BODY DIMENSIONS - WITHOUT CAP

