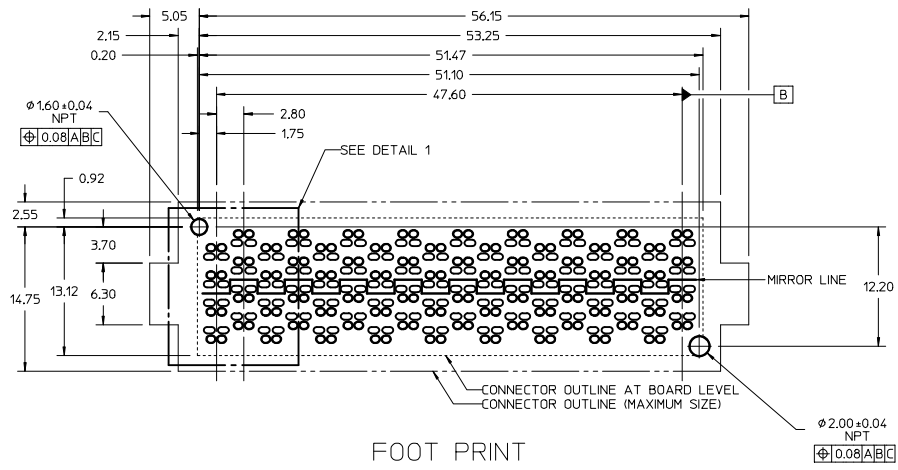
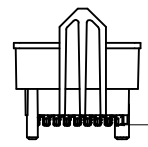
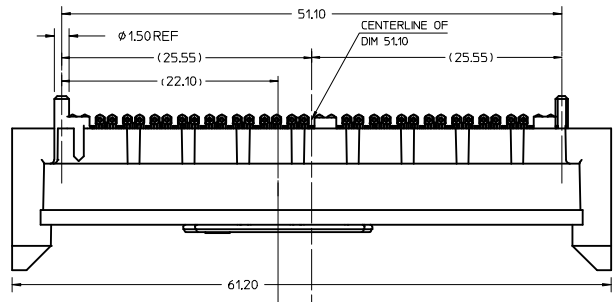


- NOTES:
- HOUSING MATERIAL: LCP, GLASS FILLED, UL 94V-0, BLACK
CONTACT MATERIAL: HIGH PERFORMANCE COPPER ALLOY
SOLDER CHARGE: LEAD FREE SOLDER ALLOY
 - FINISH:
CONTACTS: SELECTIVE GOLD: 30 MICRONS MIN ON CONTACT AREA,
SELECTIVE TIN: 100 MICRONS MIN ON SOLDERABLE PORTION
OF SOLDER TAILS, OVER 50 MICRONS MIN NICKEL OVERALL.
 - PRODUCT SPECIFICATION: PS-170807-0001
 - PACKAGING SPECIFICATION: PK-170814-002
 - APPLICATION SPECIFICATION: AS-170807-0001

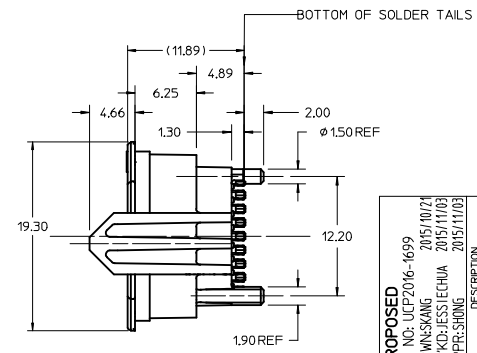
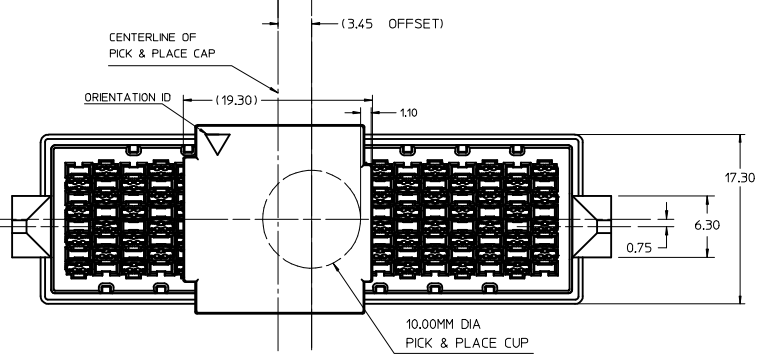
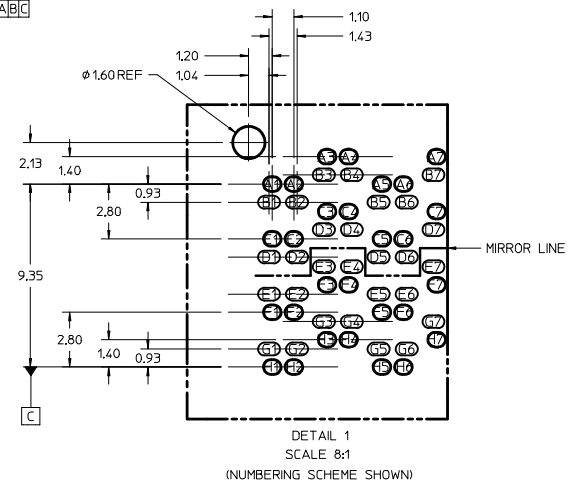


FOOT PRINT

- FOOT PRINT NOTES:
- DATUM -A- IS THE TOP OF THE PCB.
 - ALL DIMENSIONS ARE BASICS.
 - ROW A, C, F, AND H PADS (SIGNAL PADS) ARE COPPER DEFINED.
 - ROW B, D, E, AND G PADS (SHIELD PADS) ARE SOLDER MASK DEFINED.



COPLANARITY REQUIREMENT
(SCALE 3:1)



PROPOSED EC NO: UJF2016-1699 2015/10/21 DRAWNSKANG CHYO-JESSIECHUA 2015/11/03 APPR-SHONG 2015/11/03	QUALITY SYMBOLS	GENERAL TOLERANCES (UNLESS SPECIFIED)	DIMENSION STYLE	SCALE	DESIGN UNITS	THIRD ANGLE PROJECTION
	∇=0 ∇=0 ∇=0	mm INCH 4 PLACES ± --- ± --- 3 PLACES ± --- ± --- 2 PLACES ± 0.15 ± --- 1 PLACE ± --- ± ---	MM ONLY	4:1	METRIC	SKANG 2015/10/21 CHECKED BY DATE JESSIECHUA APPROVED BY DATE SHONG 2015/11/03
	DRAFT WHERE APPLICABLE MUST REMAIN WITHIN DIMENSIONS	ANGULAR ±1/2°	MATERIAL NO.	DOCUMENT NO.	RECEPTACLE 4X18, 8MM, 85 OHMS NEOSCALE	
	SIZE D	1708140043	1708140043	SD-170814-0043	MOLEX INCORPORATED SHEET NO. 1 OF 1	