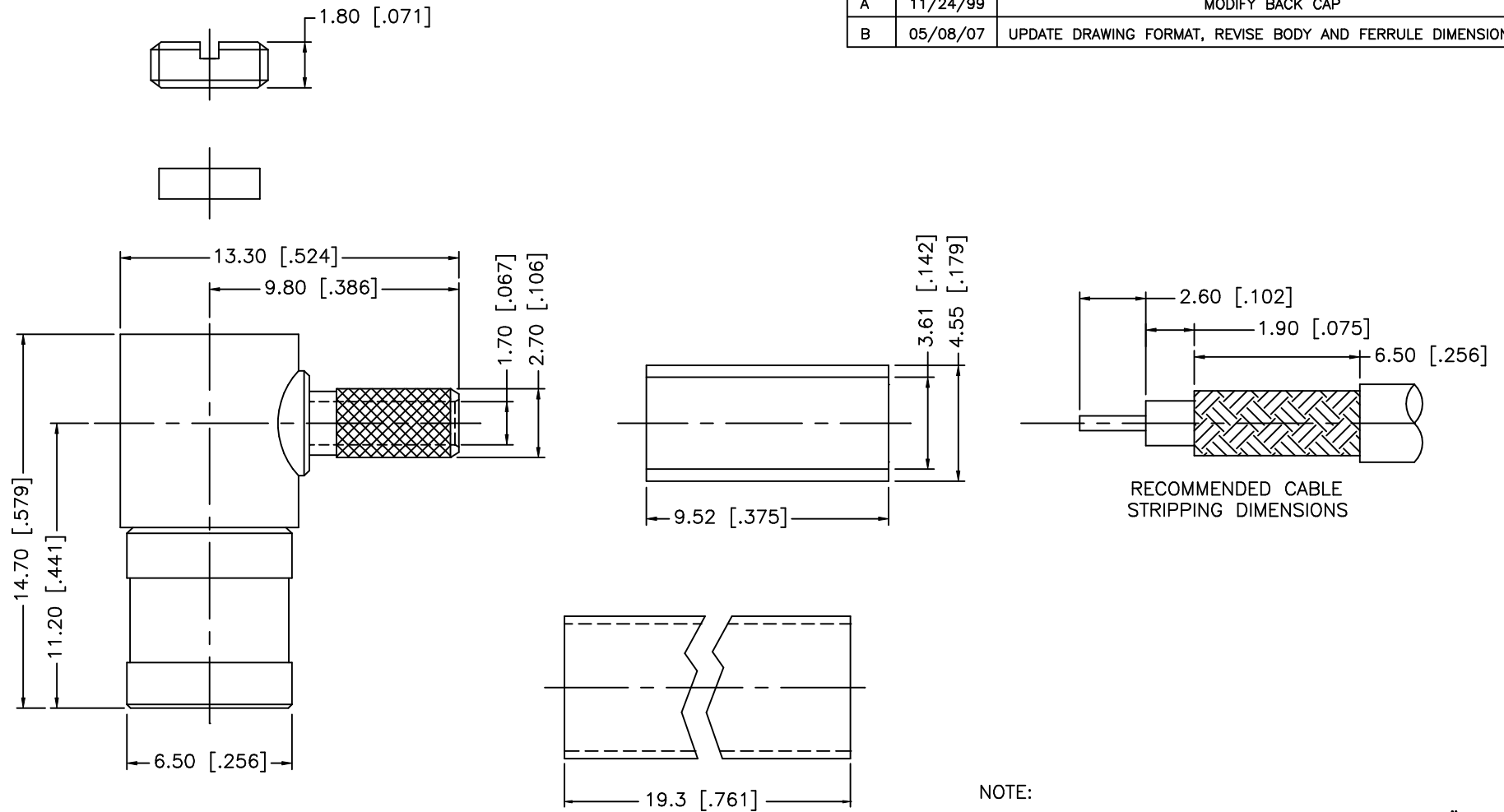


REV.	DATE	DESCRIPTION
A	11/24/99	MODIFY BACK CAP
B	05/08/07	UPDATE DRAWING FORMAT, REVISE BODY AND FERRULE DIMENSIONS



8					UNLESS OTHERWISE SPECIFIED DIMENSIONS ARE IN MILLIMETERS. DIMENSIONS IN [] ARE IN INCHES AND FOR CUSTOMER REFERENCE ONLY.	APPROVALS	DATE	Amphenol Connex						
7					UNLESS OTHERWISE SPECIFIED TOLERANCES FOR MILLIMETERS ARE: 0.5 - 8mm ± 0.20mm 8 - 30mm ± 0.40mm 30 - 120mm ± 0.50mm	DRAWN	G.R.S.				05/08/07	PART DESCRIPTION		
6	HEAT SHRINK TUBE			1		CHECKED			SMB R/A CRIMP PLUG (FOR RG-316U/D CABLE)					
5	COVER	BRASS	NICKEL	1		ISSUED			PART NO.					
4	FERRULE	COPPER	NICKEL	1		SHEET	1 OF 1		142188					
3	CONTACT PIN	BER. COPPER	GOLD	1					DWG. NO. 142188.DWG					
2	INSULATOR	TEFLON	NATURAL	1	UNLESS OTHERWISE SPECIFIED TOLERANCES FOR INCHES ARE: .020 - .315 = ± 0.007" .315 - 1.180 = ± 0.015" 1.180 - 4.724 = ± 0.020"				REV.	B	SIZE	A	SCALE	NA
1	BODY	BRASS	NICKEL	1										
	DESCRIPTION	MATERIAL	FINISH	QTY	DO NOT SCALE DRAWING	CAD FILE	C:/142/142188.DWG							