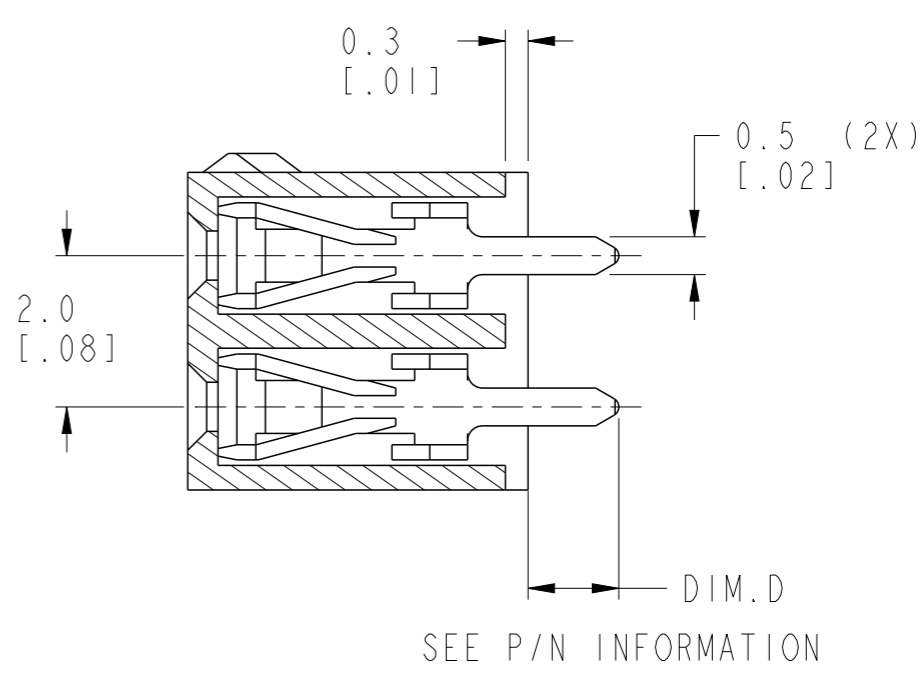
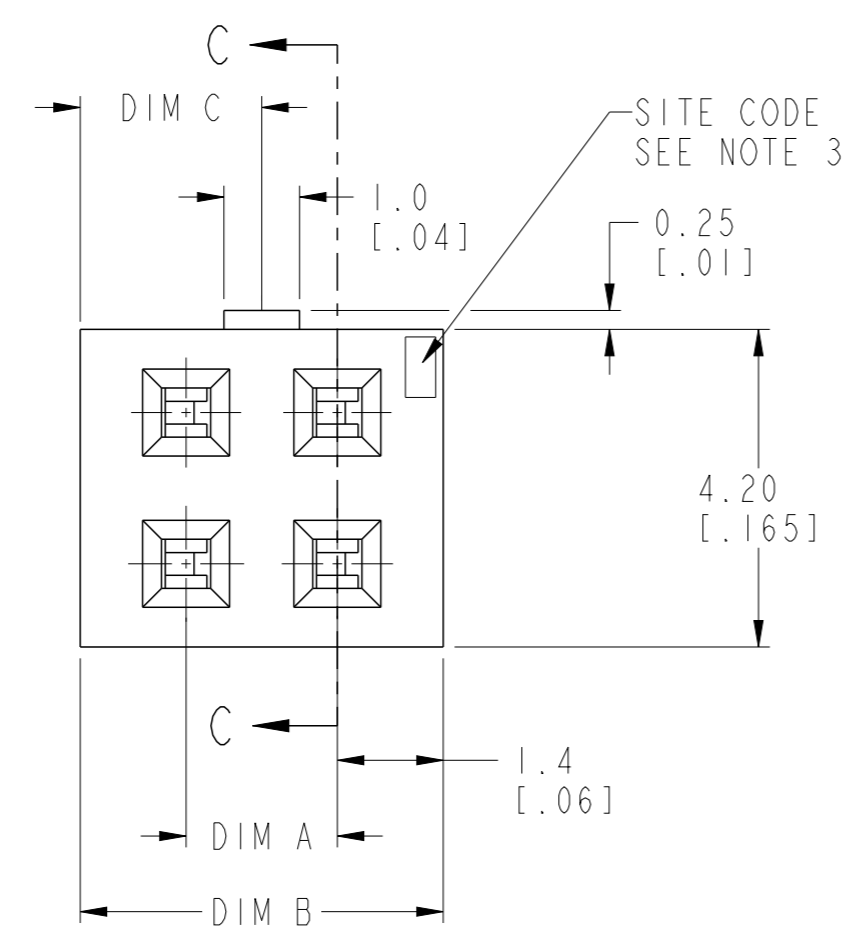


RECOMMENDED MOUNTING HOLE LAYOUT



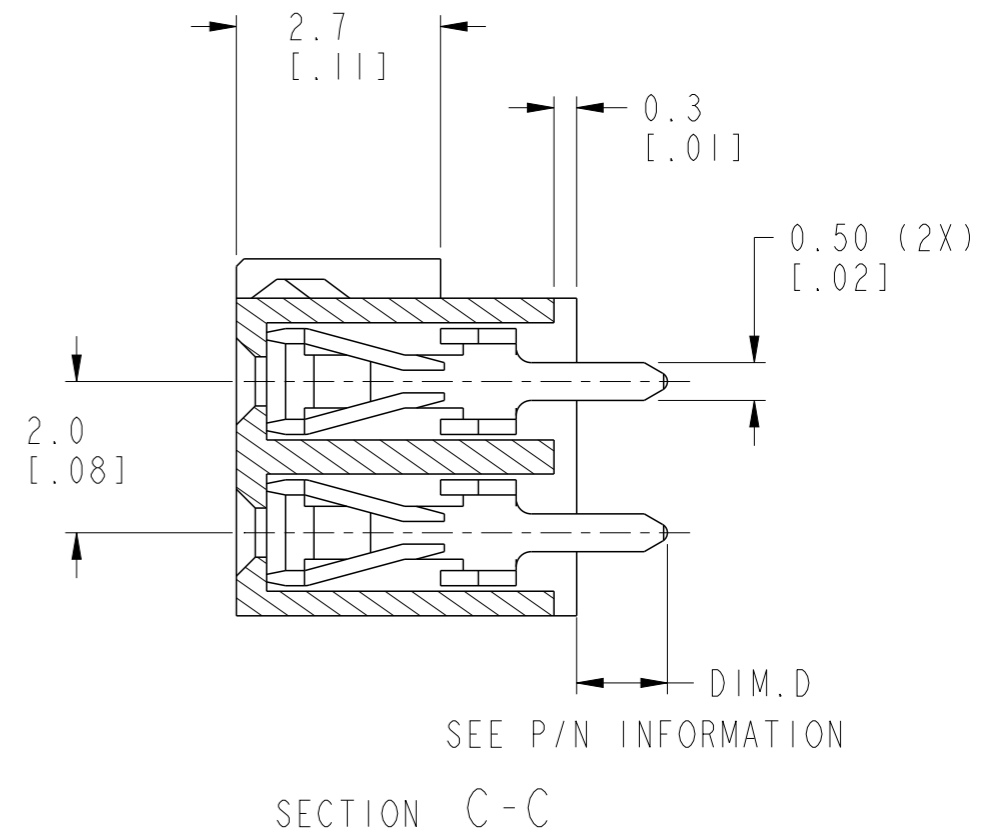
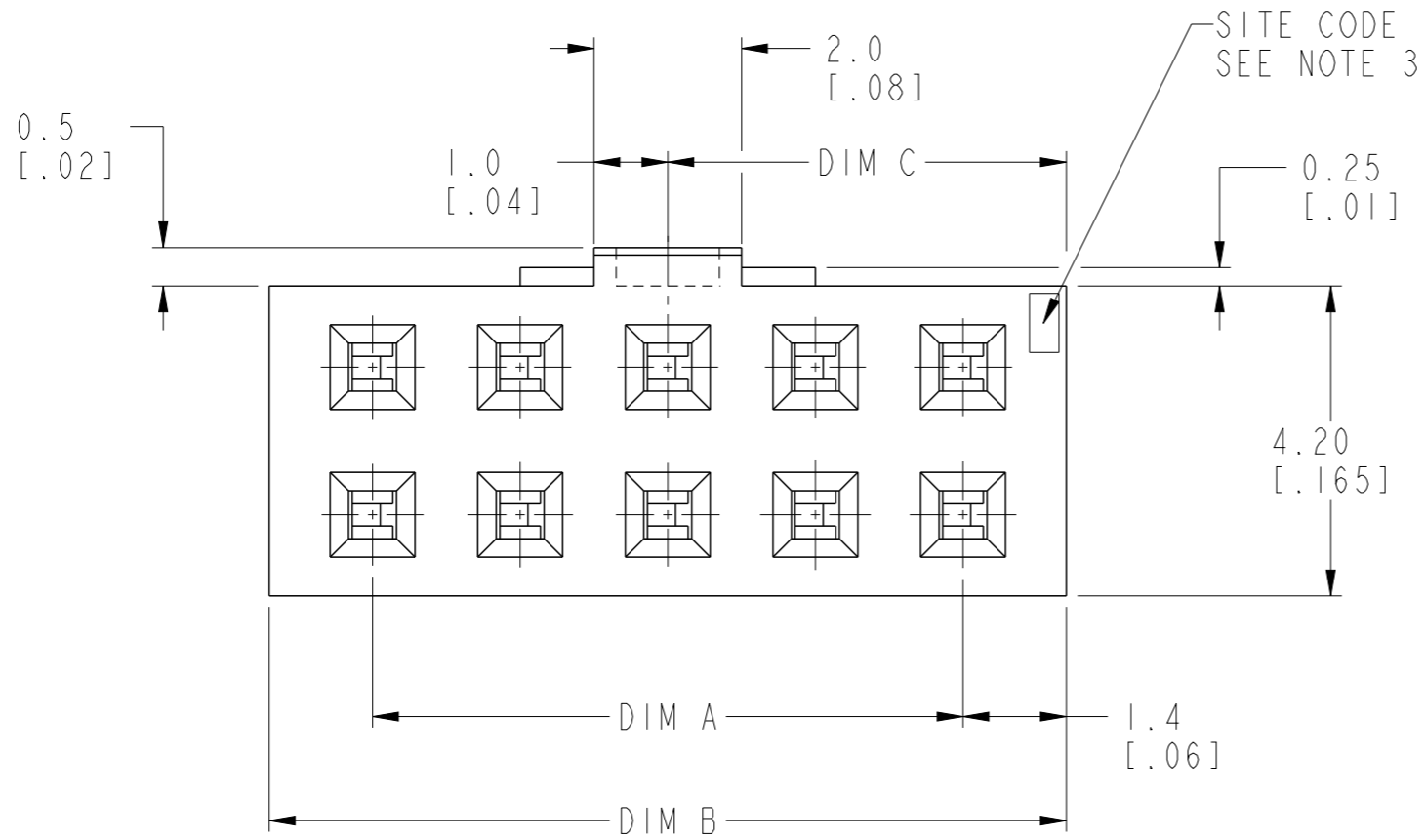
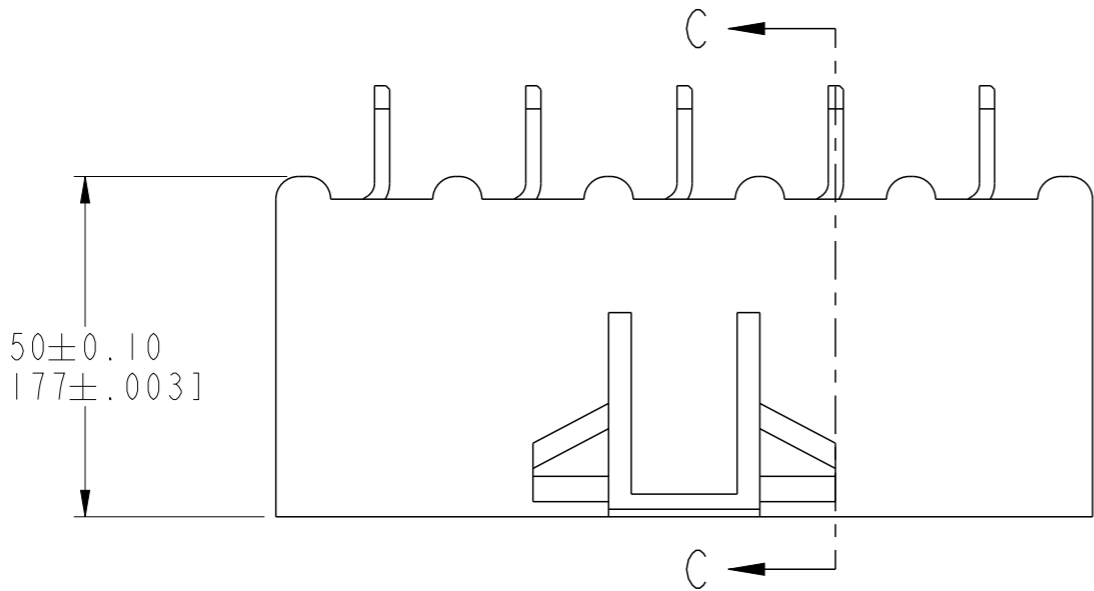
SECTION C-C

Amphenol  
FCi

© 2020 Amphenol Corporation

spec ref	-	dr	Andrew Yong	2010/10/26	projection	MM / INCH	size	A3	scale	18:1		
tolerance std	ISO 406 ISO 1101	TOLERANCES UNLESS OTHERWISE SPECIFIED			eng	Yuan-Yuan Bao	2021/06/29	ecn no	ELX-N-41380-1			
surface	ISO 1302	linear	0.X	±0.3/.01	chr	-	-	rel level	Released			
			0.XX	±0.013/.005	appr	Tim Yao	2021/07/01	product family	-			
		angular	0°	±2°	Amphenol FCI			MINITEK VCC HSG. DBL. ROW W/LATCHING	dwg no	90310	rev	P
					cat. no.	-	Product - Customer Drw			sheet 1 of 3		

4.50±0.10  
[.177±.003]

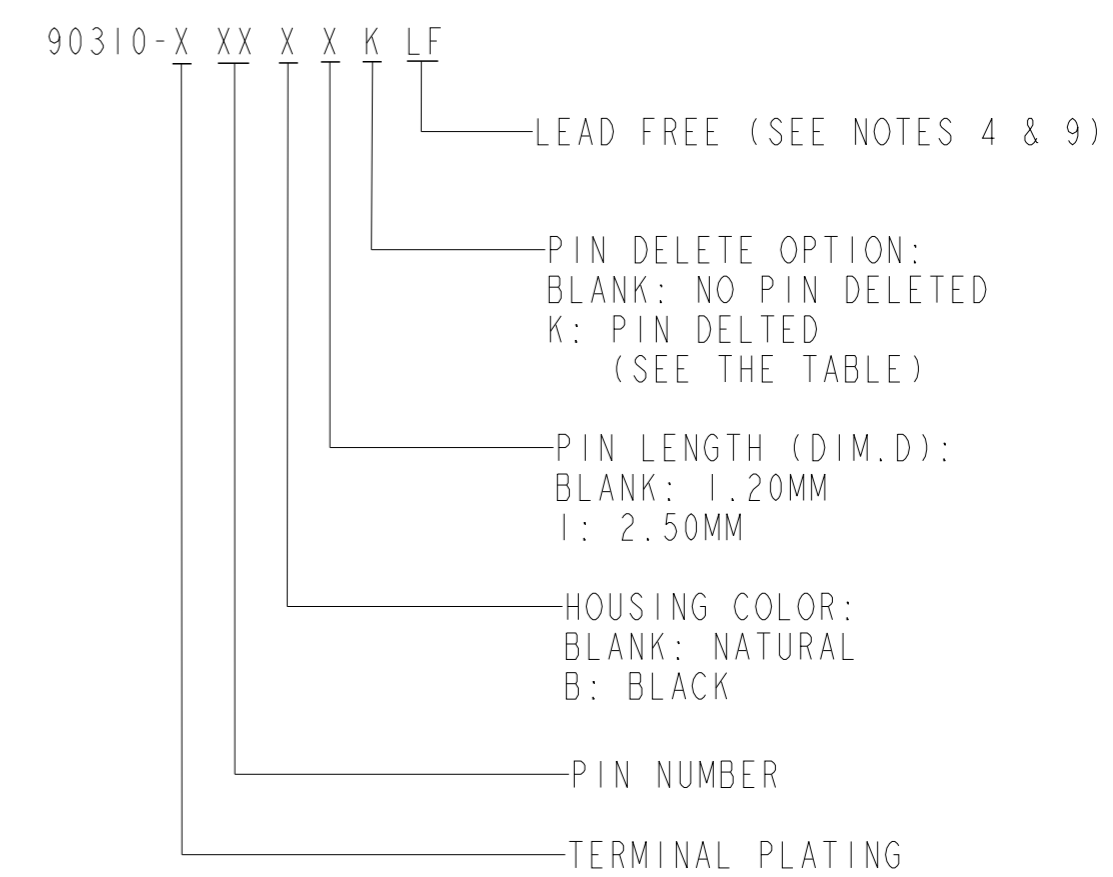


spec ref -		dr	Andrew Yong	2010/10/26	projection 	MM / INCH	size	A3	scale	10:1
tolerance std ISO 406 ISO 1101		eng	Yuan-Yuan Bao	2021/06/29			ecn no	ELX-N-41380-1		
TOLERANCES UNLESS OTHERWISE SPECIFIED		chr	-	-	product family		MINITEK	rel level	Released	
		appr	Tim Yao	2021/07/01	MINITEK VCC HSG. DBL. ROW W/LATCHING		dwg no	90310	rev	P
surface	linear	0.X	±0.3/.01	Amphenol FCi	cat. no.	-	Product - Customer Drw		sheet 2 of 3	
		0.XX	±0.013/.005							
	angular	0°	±2°							

PRODUCT NO	POSITIONS	DIM. A	DIM. B	DIM. C	LATCHING FEATURE	PIN DELETED
90310-X04	2 X 2	2.0/.08	4.8/.19	2.4/.09	1	/
90310-X06	2 X 3	4.0/.16	6.8/.27	3.4/.13	2	/
90310-X08	2 X 4	6.0/.24	8.8/.35	4.4/.17	▲	/
90310-X10	2 X 5	8.0/.32	10.8/.43	5.4/.21		/
90310-X12	2 X 6	10.0/.39	12.8/.50	6.4/.25		/
90310-X12K	2 X 6	10.0/.39	12.8/.50	6.4/.25		1,2,11,12
90310-X14	2 X 7	12.0/.47	14.8/.58	7.4/.29		/
90310-X16	2 X 8	14.0/.55	16.8/.66	8.4/.33		/
90310-X18	2 X 9	16.0/.63	18.8/.74	9.4/.37		/
90310-X20	2 X 10	18.0/.71	20.8/.82	10.4/.41		/
90310-X22	2 X 11	20.0/.79	22.8/.90	11.4/.45		/
90310-X24	2 X 12	22.0/.87	24.8/.98	12.4/.49		/
90310-X26	2 X 13	24.0/.95	26.8/1.06	13.4/.53		/
90310-X28	2 X 14	26.0/1.02	28.8/1.13	14.4/.57		/
90310-X30	2 X 15	28.0/1.10	30.8/1.21	15.4/.61		/
90310-X32	2 X 16	30.0/1.18	32.8/1.29	16.4/.65	▼	/
90310-X34	2 X 17	32.0/1.26	34.8/1.37	17.4/.69	2	/

PLATING	DESCRIPTION SEE NOTE 4
0	0.2μm/ 8μ" Au
1	0.76μm/ 30μ" Au
2	UNASSIGNED
3	0.38μm/ 15μ" Au

PART NUMBER INFORMATION:



NOTES:

- HOUSING MATERIAL: HIGH TEMPERATURE THERMOPLASTIC UL94V-0 COLOR NATURAL OR BLACK.
- TERMINAL MATERIAL: COPPER ALLOY
- SITE CODE INDICATES POS 1.
- PLATING AT CONTACT:  
Au OVER 1.27μm/500 Ni  
  
PLATING AT SOLDER TAIL:  
(a) SOLDER TAIL OF P/N: 90310-XXX IS TIN/LEAD PLATED.  
(b) SOLDER TAIL OF P/N: 90310-XXXLF IS 100% MATTE TIN PLATED.
- FOR USE WITH MINITEK LATCHING HEADERS WHEN MATING AND UNMATING THE FORCES WILL BE APPROX 1 Kg/2.2 lbs. GREATER THAN THE FORCES DETAILED IN 110-036, PAR 3.5.3.5.
- SHEET 1 SHOWS THE SINGULAR LATCHING FEATURE CONFINED TO THE 2X2.

- THIS HOUSING WILL WITHSTAND EXPOSURE TO 250°C PEAK TEMPERATURE FOR 10 SECONDS IN A CONVECTION, INFRA-RED OR VAPOR PHASE REFLOW OVEN.
- THE HOUSING WILL WITHSTAND EXPOSURE TO 260°C PEAK TEMPERATURE FOR 10 SECONDS IN A WAVE SOLDER APPLICATION WITH A 1.57MM MINIMUM THICK CIRCUIT BOARD.
- THIS PRODUCT MEETS EUROPEAN UNION DIRECTIVES AND OTHER COUNTRY REGULATIONS AS DESCRIBED IN GS-22-008.

dr	Andrew Yong	2010/10/26	projection 	MM / INCH ← →	size	A3	scale	1:1
eng	Yuan-Yuan Bao	2021/06/29			ecn no	ELX-N-41380-1		
chr	-	-			rel level	Released		
appr	Tim Yao	2021/07/01	product family	MINITEK	cat. no.	-	Product - Customer Drw	sheet 3 of 3
Amphenol FCI			MINITEK VCC HSG. DBL. ROW W/LATCHING		dwg no	90310	rev	P

Amphenol FCI

© 2020 Amphenol Corporation