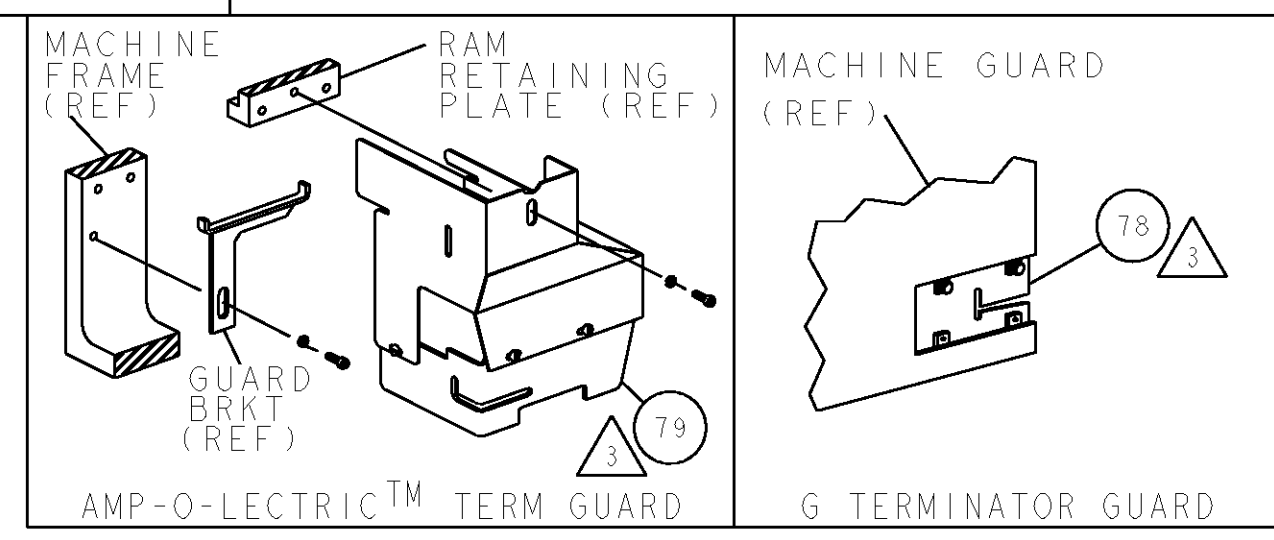


PART NUMBER	REV	FIRST USED	POWER UNIT	FEED TYPE
1855447-1	A	122500-1	LEADMAKER & BENCH MODEL G	AIR FEED
1855447-2	A	565435-5	BENCH MODEL K	AIR FEED
7-1855447-7	A	-	SPARE PARTS	-

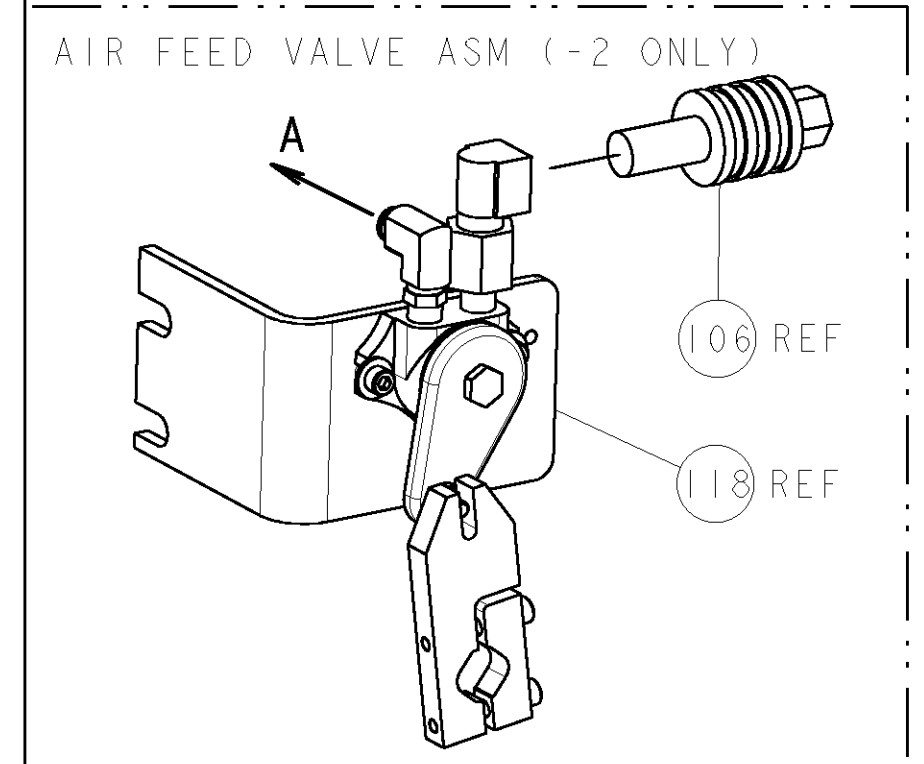
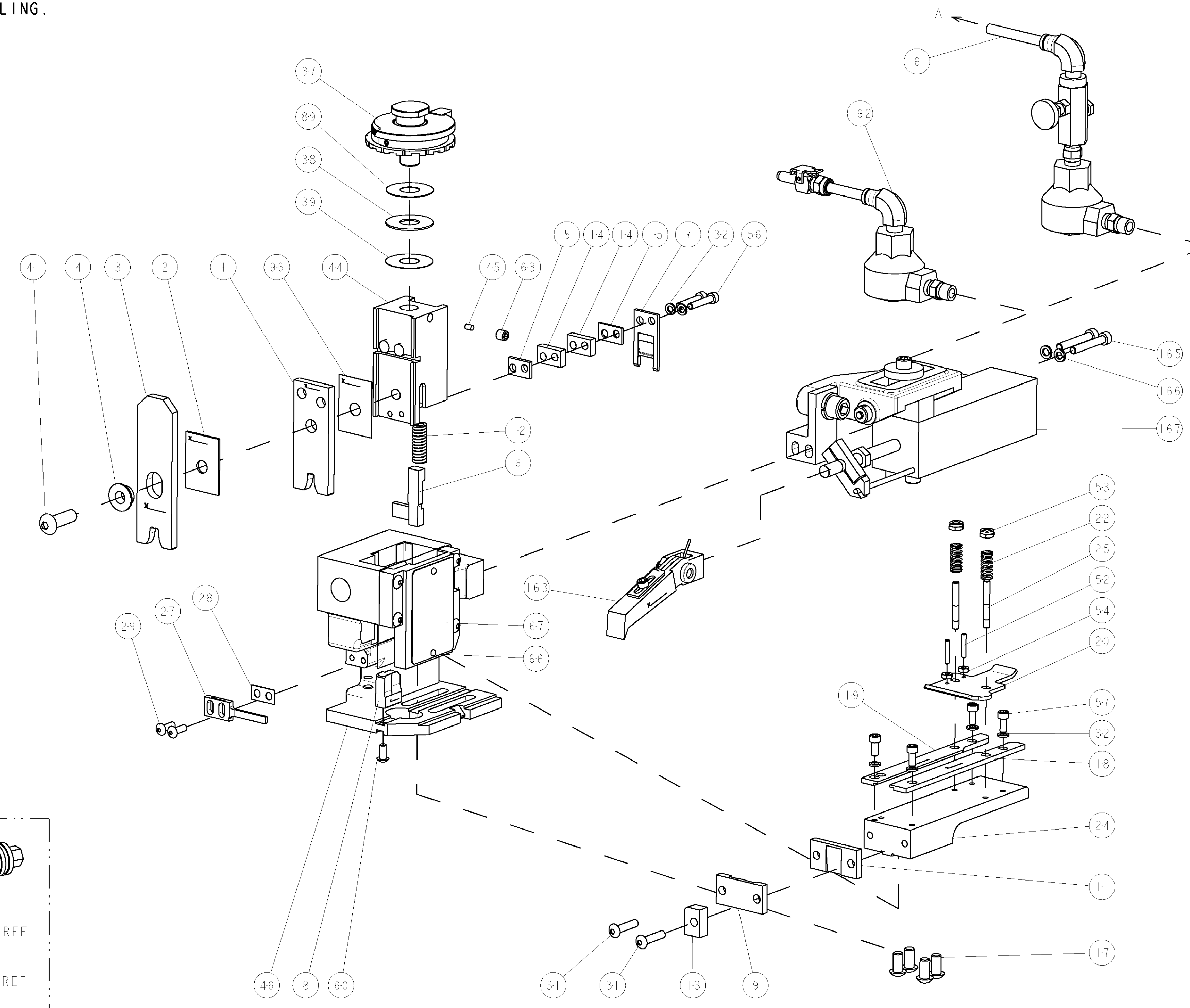


TERMINAL NAME: RING TERMINAL				
TE PN	MFG PN	METALLON TERMINAL - TE CRIMP SPECS		
1949825	6H-3591	REF SETTING*		
-	-	CRIMP HEIGHT	WIRE SIZE	REF SETTING*
-	-	3.45±0.05mm [.136±.002]	10AWG	C0
-	-	3.20±0.05mm [.126±.002]	12AWG	E0
-	-	-	-	-
-	-	CRIMP	SIZE	TYPE
-	-	WIRE	5.33mm [.210]	F
-	-	INSUL	7.11mm [.280]	F
-	-	-	Ø5.33-6.60mm [.210-.260]	-
WIRE STRIP LENGTH	TERM APPL SPEC	FEED	APPL INSTRUCTIONS	SET UP GAGE
7.14-7.92mm	NONE	33.91mm	408-8039	458638-1

LOC	DIST	REVISIONS			
A	66	REV	DESCRIPTION	DATE	BY
		A	RELEASED	12DEC2008	LG

- △ RECOMMENDED SPARE PARTS
- △ GREASE LIGHTLY
- △ GUARD MUST BE IN PLACE WHEN OPERATING APPLICATOR IN A BENCH MACHINE

***WARNING:**
ON INSTALLATION, SET WIRE DISC TO LARGEST WIRE SIZE SETTING. USE OF SETTINGS BELOW MIN REQUIRED CRIMP HEIGHT SETTING WILL CAUSE DAMAGE TO CRIMP TOOLING.



-	1	1	-	2-460277-0	AIR FEED ASSY	167
-	2	2	-	21024-5	WASHER, SPRG LOCK, REG NO 10	166
-	2	2	-	4-21000-0	SCR, SKT HD CAP 10-32 X 1.250	165
-	1	1	-	460680-1	FEED FINGER ASSEMBLY	163
-	-	1	-	692655-7	AIR FEED VALVE ASSEMBLY	162
-	1	-	-	692655-5	AIR FEED VALVE ASSEMBLY	161
-	REF	-	-	692655-6	AIR FEED VALVE ASSEMBLY	118
-	REF	-	-	24042-2	VALVE, SHUT-OFF	106
-	1	1	-	455888-1	SPACER, CRIMPER	96
-	1	1	-	1-469367-0	SHIM	89
-	REF	-	-	455745-1	GUARD WINDOW	79
-	-	REF	-	679532-1	INSERT, GUARD	78
-	1	1	-	217238-1	GENERAL INSTRUCTION PKG	72
-	1	1	-	4088039	EF APPL INST 408-8039	71
-	1	1	-	461264-5	PLATE, IDENTIFICATION	67
-	2	2	-	21017-2	SCREW, DRIVE	66
-	1	1	-	21009-2	SCR, SET, SELF LOCKING 1/4-20 X .250	63
-	1	1	-	22733-8	SCR, BHSC, SELF-LOCKING, 8-32 X .375	60
-	4	4	-	2-21000-6	SCR, SKT HD CAP 8-32 X .375	57
-	2	2	-	3-21000-0	SCR, SKT HD CAP 8-32 X .875	56
-	2	2	-	21018-4	NUT, HEX, REG 4-40	54
-	2	2	-	21022-2	NUT, LOCK, HEX, TORQUE, 8-32	53
-	2	2	-	2-21006-6	SCR, SET, CUP POINT 4-40 X .625	52
-	1	1	-	1633570-1	SUB ASSY, APPLICATOR FRAME	46
-	1	1	-	690191-1	PLUG, NYLON	45
-	1	1	-	1338281-7	RAM	44
-	1	1	-	7-21002-9	SCR, BTN SKT HD CAP 5/16-24 X 1.00	41
-	1	1	-	690125-1	SHIM SUB-ASSY	39
-	1	1	-	469367-7	SHIM	38
-	1	1	-	879103-2	FINE ADJUST HEAD ASSEMBLY	37
-	6	6	-	21024-4	WASHER, SPRG LOCK, REG NO 8	32
-	2	2	-	3-21002-0	SCR, BTN SKT HD CAP 10-32 X .875	31
-	2	2	-	2-21002-2	SCR, BTN SKT HD CAP 8-32 X .500	29
-	1	1	-	1-690451-7	SPACER, STRIPPER	28
-	1	1	-	468281-5	STRIPPER	27
-	2	2	-	22354-7	STUD, THREADED	25
-	1	1	-	455678-1	PLATE, STRIP GUIDE	24
-	2	2	-	3-22281-8	SPRING, DRAG	22
-	1	1	-	454177-1	DRAG	20
-	1	1	-	2-458030-5	STRIP GUIDE, REAR	19
-	1	1	-	2-458031-5	STRIP GUIDE, FRONT	18
-	4	4	-	3-21002-3	SCR, BTN SKT HD CAP 1/4-20 X .500	17
-	1	1	-	3-240641-9	SPACER	15
-	2	2	-	2-240641-9	SPACER	14
-	1	1	-	1-690481-2	SPACER, HOLD DOWN	13
-	1	1	-	23846-1	SPRING, DIE	12
-	1	1	-	240644-1	PLATE, REAR SHEAR	11
-	-	-	-	-	-	10
-	1	1	-	690482-3	PLATE, FRONT SHEAR	9
-	1	1	-	5-461295-9	ANVIL, COMBINATION	8
-	1	1	-	690474-3	BLADE, SLUG	7
-	1	1	-	3-455892-4	HOLD DOWN, TERMINAL	6
-	1	1	-	1338708-1	SPACER, SLUG BLADE	5
-	1	1	-	238009-7	BLOCK, FL CRIMPER SPACER	4
-	1	1	-	8-1633471-9	CRIMPER, INSULATION F	3
-	1	1	-	1-455888-2	SPACER, CRIMPER	2
-	1	1	-	1-456430-1	CRIMPER, WIRE	1

ITEM NO	DESCRIPTION	PART NO	U/M	REV
-77	-2	-1	U/M	1

DATE	11NOV2008	DRN	EL GROSS
CHK	G. BAILEY	CHK	G. BAILEY
APVD	N. DEMING	APVD	N. DEMING
PRODUCT SPEC		APPLICATION SPEC	
SIZE	CAGE CODE	DRAWING NO	RESTRICTED TO
A	00779	1855447	
CUSTOMER DRAWING	SCALE	3:5	SHEET 1 OF 1

CUSTOMER VIEWABLE ASSEMBLY