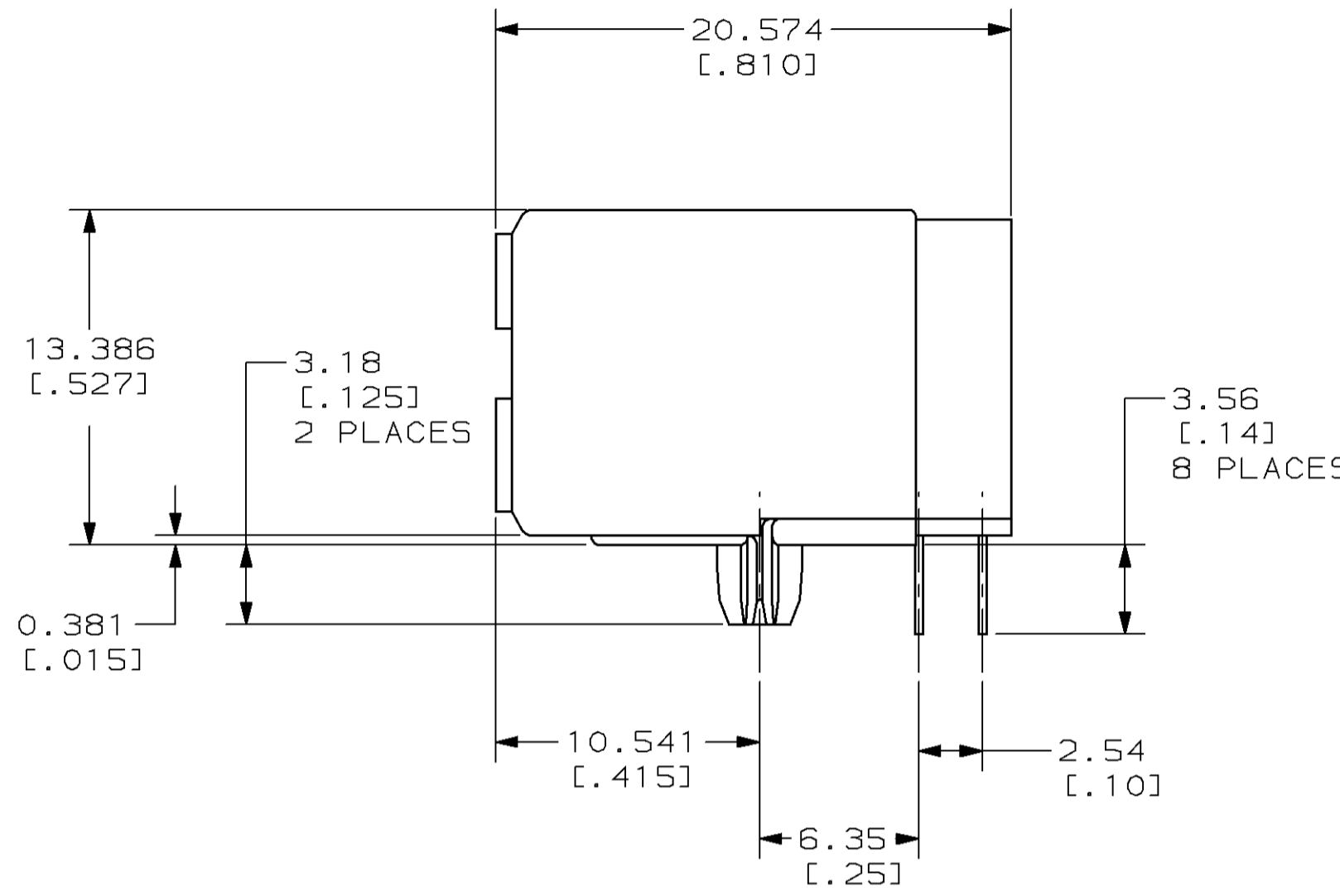
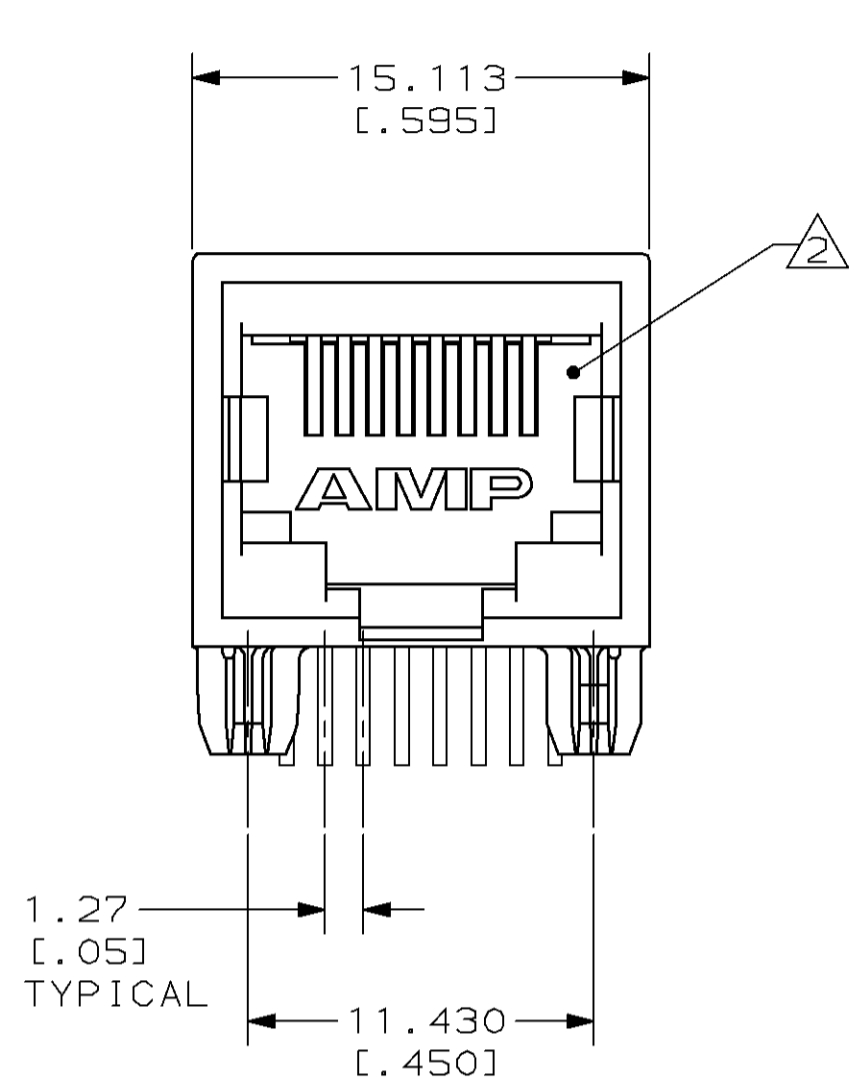
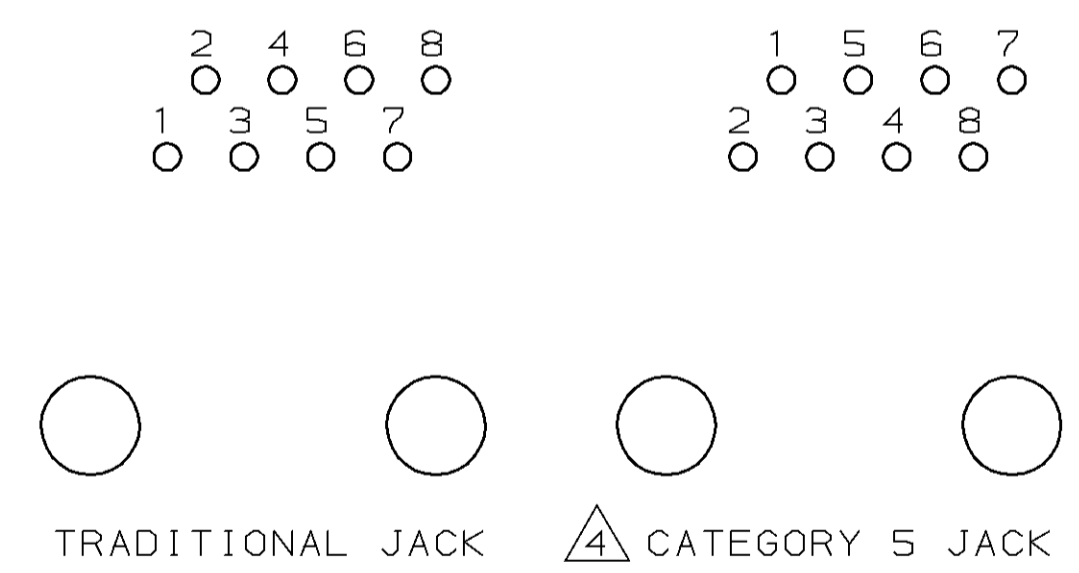
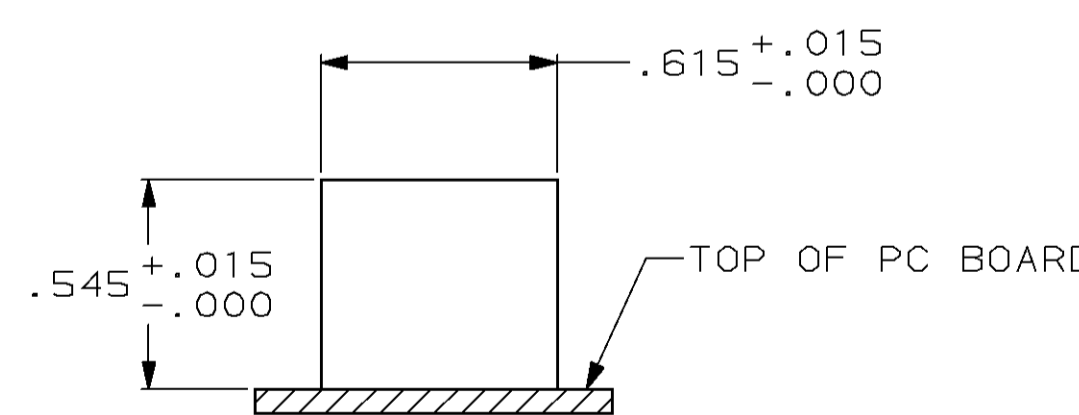
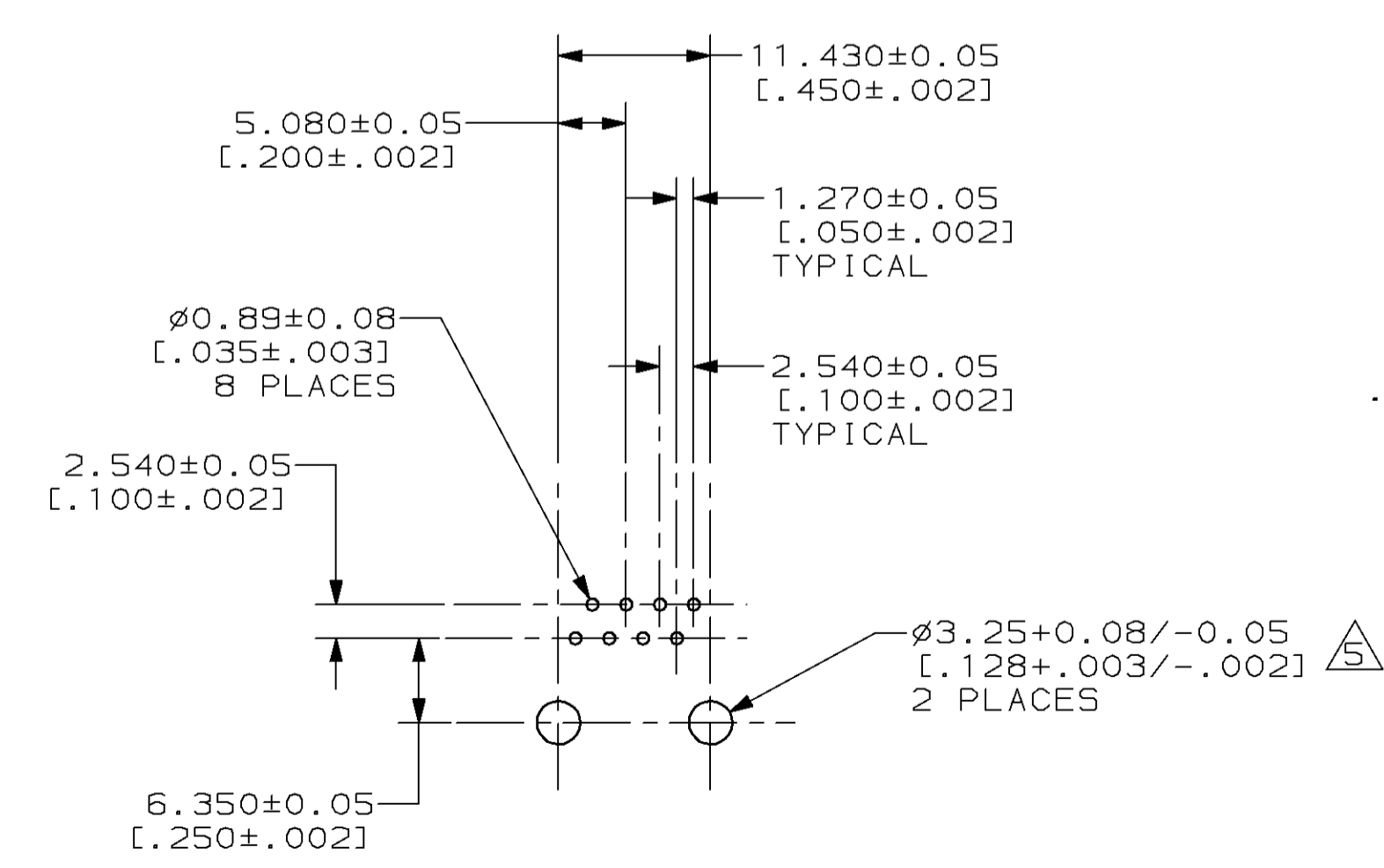


THIS DRAWING IS UNPUBLISHED. RELEASED FOR PUBLICATION  
 BY AMP INCORPORATED. ALL RIGHTS RESERVED.

| LOC | DIST | REVISIONS |     |                      |         |     |      |
|-----|------|-----------|-----|----------------------|---------|-----|------|
| AA  | 22   | P         | LTR | DESCRIPTION          | DATE    | DWN | APVD |
|     |      | D         |     | REV; EC 0502-0377-97 | 22AUG97 | DS  | JT   |



- 1 MATERIAL: HOUSING-HTN NYLON, BLACK, IR COMPATIBLE, UL 94V-0. TERMINALS - 0.33 [.013] THICK PHOS BRONZE PLATED WITH 1.27µm [.000050] MINIMUM THICK HARD GOLD IN LOCALIZED AREA AND 3.81µm [.000150] MINIMUM THICK TIN-LEAD IN SOLDER AREA OVER 1.27µm [.000050] MINIMUM THICK NICKEL UNDERPLATE.
- 2 JACK CAVITY CONFORMS TO FCC RULES AND REGULATIONS, PART 68 SUBPART F.
- 3 ALL DIMENSIONS SHOWN ARE NOMINAL UNLESS OTHERWISE SPECIFIED.
- 4 CAUTION: CATEGORY 5 JACK SOLDER TAIL POSITIONS DO NOT FOLLOW SAME NUMBER SEQUENCE AS THAT OF TRADITIONAL JACKS.
- 5 USE #30 DRILL BIT OR 3.25mm DRILL BIT WHEN PRODUCING THESE PCB HOLES.



SUGGESTED PANEL CUTOUT  
 SCALE 2:1

SUGGESTED PC BOARD LAYOUT  
 COMPONENT SIDE  
 SCALE 2:1

|  |  |   |  |                              |  |
|--|--|---|--|------------------------------|--|
| <small>THIS DRAWING IS A CONTROLLED DOCUMENT FOR AMP INCORPORATED. IT IS SUBJECT TO CHANGE AND THE CONTROLLING ENGINEERING ORGANIZATION SHOULD BE CONTACTED FOR THE LATEST REVISION.</small> |  | DWN T. PITTS 2-2-94<br>CHK B. FOX 2-16-94<br>APVD G. REED 2-16-94 | <b>AMP</b> AMP Incorporated<br>Harrisburg, PA 17105-3608   |                              |  |
| DIMENSIONS:<br>mm [INCHES]   | TOLERANCES UNLESS OTHERWISE SPECIFIED:<br>0 PLC ±-<br>1 PLC ±-<br>2 PLC ±0.254 [.011]<br>3 PLC ±0.127 [.005]<br>4 PLC ±-<br>ANGLES ±-<br>FINISH ±- | PRODUCT SPEC 108-1163<br>APPLICATION SPEC 114-2048<br>WEIGHT -    | NAME MODULAR JACK ASSEMBLY, 8 POSITION, RIGHT ANGLE, LOW PROFILE, CATEGORY 5<br>SIZE A2 CAGE CODE 00779 DRAWING NO. C-558341 |                              |  |
| MATERIAL 1   |  | CUSTOMER DRAWING  |  | SCALE 4:1 SHEET 1 OF 1 REV D |  |

558341