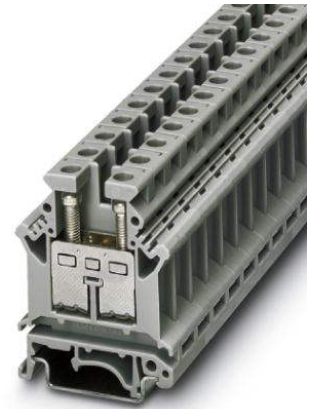


# UK 16

Order No.: 3006014



<http://eshop.phoenixcontact.de/phoenix/treeViewClick.do?UID=3006014>

Feed-through modular terminal block, Type of connection: Screw connection, Cross section: 0.5 mm<sup>2</sup> - 16 mm<sup>2</sup>, AWG 20 - 6, Width: 10.2 mm, Color: gray, Mounting type: NS 35/7,5, NS 35/15, NS 32

Commercial data	
EAN	4017918091286
Pack	50 pcs.
Customs tariff	85369010
Weight/Piece	0.02117 KG

#### Product notes

WEEE/RoHS-compliant since:  
01/01/2003



<http://www.download.phoenixcontact.com>  
Please note that the data given here has been taken from the online catalog. For comprehensive information and data, please refer to the user documentation. The General Terms and Conditions of Use apply to Internet downloads.

#### Certificates / Approvals



Certification

BV, CSA, CUL, GL, GOST, KR, LR, NK, RS, UL

**CSA**

Nominal voltage $U_N$	600 V
Nominal current $I_N$	80 A
AWG/kcmil	24-6

**CUL**

Nominal voltage $U_N$	600 V
Nominal current $I_N$	65 A
AWG/kcmil	24-6

**UL**

Nominal voltage $U_N$	600 V
Nominal current $I_N$	65 A
AWG/kcmil	24-6

**Accessories**

Item	Designation	Description
<b>Assembly</b>		
3003224	ATP-UK	Partition plate, Length: 56 mm, Width: 1.5 mm, Height: 59 mm, Color: gray
3022218	CLIPFIX 35	Snap-on end bracket, for 35 mm NS 35/7.5 or NS 35/15 DIN rail, can be fitted with Zack strip ZB 8 and ZB 8/27, terminal strip marker KLM 2 and KLM, width: 9.5 mm, color: gray
3006027	D-UK 16	End cover, Length: 42.5 mm, Width: 1.5 mm, Height: 54 mm, Color: gray
3006108	D-UK 16 BU	End cover, Length: 42.5 mm, Width: 1.5 mm, Height: 54 mm, Color: blue
1201442	E/UK	End clamp, for assembly on NS 32 or NS 35/7,5 DIN rail
1024250	EA 7	Single covers, color: transparent
1201028	NS 32 AL UNPERF 2000MM	G rail 32 mm (NS 32)
1201002	NS 32 PERF 2000MM	G-profile DIN rail, material: Steel, perforated, height 15 mm, width 32 mm, length 2 m
1201015	NS 32 UNPERF 2000MM	G-profile DIN rail, material: Steel, unperforated, height 15 mm, width 32 mm, length 2 m
0801733	NS 35/ 7,5 PERF 2000MM	DIN rail, material: Steel, galvanized and passivated with a thick layer, perforated, height 7.5 mm, width 35 mm, length: 2 m
0801681	NS 35/ 7,5 UNPERF 2000MM	DIN rail, material: Steel, unperforated, height 7.5 mm, width 35 mm, length: 2 m

1201756	NS 35/15 AL UNPERF 2000MM	DIN rail, deep-drawn, high profile, unperforated, 1.5 mm thick, material: Aluminum, height 15 mm, width 35 mm, length 2 m
0204518	STL 16/10	Cross connector/bridge, Color: white aluminum
0204097	STL 35/16	Cross connector/bridge, Color: white aluminum
1302215	TS-K	Separating plate, Length: 22.7 mm, Height: 30.5 mm, Color: gray

**Bridges**

0203153	EB 2-10	Cross connector/bridge, Number of positions: 2, Color: gray
0203328	EB 3-10	Cross connector/bridge, Number of positions: 3, Color: gray
0203137	EB 10-10	Cross connector/bridge, Number of positions: 10, Color: gray
0203483	FBI 2-10	Cross connector/bridge, Number of positions: 2, Color: aluminum
0203276	FBI 10-10	Cross connector/bridge, Number of positions: 10, Color: silver
0203234	SB 2-10/15	Cross connector/bridge, Number of positions: 2, Color: silver

**Marking**

1004225	WS 4-10	Warning plate, with 2 plastic screws, across 4 terminal blocks, pitch 10 mm
1004429	WS 5-10	Warning plate, with 2 plastic screws, across 5 terminal blocks, pitch 10 mm
1050525	ZB10:SO/CMS	Zack strip, 10-section, divisible, special printing, marking according to customer requirements

**Plug/Adapter**

0310541	KSS 10	Short circuit connector, Number of positions: 2, Color: black
0303299	PSB 4/7/6	Female test connector, Color: silver
0303406	PSBJ 4/15/6 BK	Female test connector, Color: black
0303354	PSBJ 4/15/6 BU	Female test connector, Color: blue
0303419	PSBJ 4/15/6 FARBLOS	Female test connector, Color: transparent
0303370	PSBJ 4/15/6 GN	Female test connector, Color: green
0303396	PSBJ 4/15/6 GY	Female test connector, Color: gray
0303325	PSBJ 4/15/6 RD	Female test connector, Color: red
0303383	PSBJ 4/15/6 VT	Female test connector, Color: violet
0303312	PSBJ 4/15/6 WH	Female test connector, Color: white
0303367	PSBJ 4/15/6 YE	Female test connector, Color: yellow

**Address**

PHOENIX CONTACT Deutschland GmbH  
Flachmarktstr. 8  
32825 Blomberg, Germany  
Phone +49 5235 3 12000  
Fax +49 5235 3 41200  
<http://www.phoenixcontact.de>



© 2010 Phoenix Contact  
Technical modifications reserved;