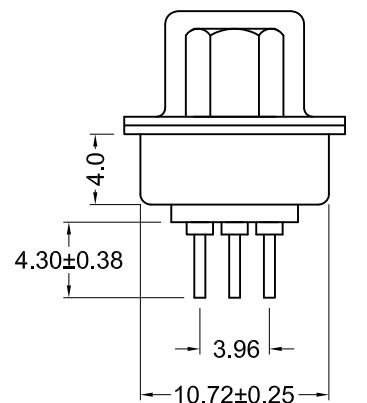


Recommended PCB Layout  
(Top View)

Part Number	Gold Option
K86X-AD-26S-BRJ	Gold Flash (standard)
K86X-AD-26S-BRJ15	15u" Gold (15 option)
K86X-AD-26S-BRJ30	30u" Gold (30 option)



Boardlocks not shown in this view

**Material and Finish**

- Shell: Steel, Nickel plated
- Insulator: PBT thermoplastic with glass-fiber reinforcement, UL94V-0 rated, Color: Black
- Contact Material: Socket - Brass
- Contact Plating Options:
  - Standard: gold flash on mating end, tin on termination end, nickel underplate on entire contact
  - 15 Option: 15u" gold on mating end, tin on termination end, nickel underplate on entire contact
  - 30 Option: 30u" gold on mating end, tin on termination end, nickel underplate on entire contact

**Electrical Specifications**

- Rated Current: 1.5A
- Rated Voltage: 30Vac
- Insulation Resistance: more than 1000 megohms at 500V DC
- Contact Resistance: 13 milliohms max.
- Dielectric Withstanding Voltage: 1000V for 1 minute
- Operating Temperature: -55°C to +75°C

Tolerances
X.X ± 0.25
X.XX ± 0.15
Unless Stated
Otherwise



REV.	DATE	DESCRIPTION	REV. BY	CHK. BY	DRAWN BY	DATE
A1	06/18/07	New Drawing	A. Frederick	H. MA	A. Frederick	06/18/07
A2	1/16/08	ECO# 07-052	WILL H.	H. MA		
A3	8/29/14	ECO# 14-028	H. MA	P. DalCanto		
A4	12/31/17	ECO# 17-033	G. Serrato	C. Furumasu		
					UNITS	
					mm	

**K86X-AD-26S-BRJ**

High Density, D-Sub, Vertical Mount,

Boardlocks w/ Jackscrews, 26 pin Female, RoHS Compliant

