

PART WITH CAP
(FOR ILLUSTRATION ONLY)

NOTES:

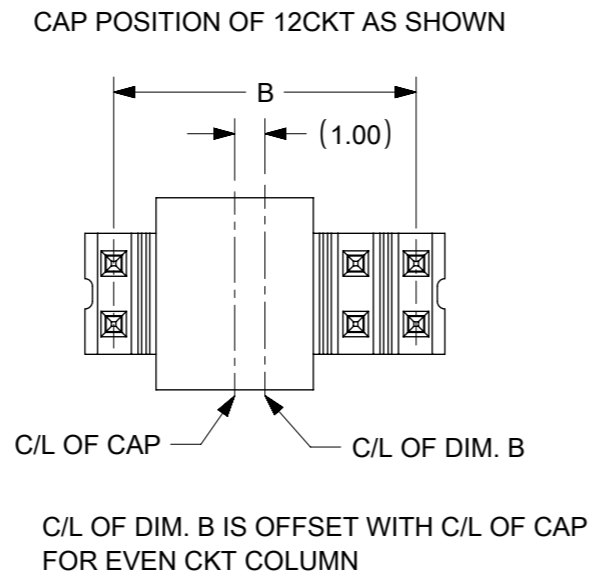
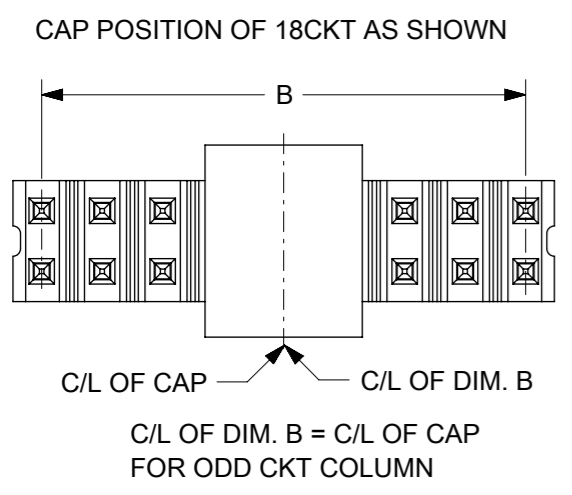
1. MATERIAL:
HSG: NYLON, GLASS-FILLED, UL94V-0 COLOR: BLACK
PIN: 0.50MM SQ, COPPER ALLOY
2. PLATING FINISH:
 - (1) 0.05-0.25µm GOLD OVER
1.25µm MIN. NICKEL OVERALL.
 - (2) 0.05-0.25µm SELECTIVE GOLD ON CONTACT AND
2.50µm MIN. SELECTIVE TIN ON SOLDER TAIL OVER
1.25µm MIN. NICKEL OVERALL.
 - (3) 0.38µm MIN. SELECTIVE GOLD PLATE ON CONTACT AND
2.00µm MIN. SELECTIVE TIN ON SOLDER TAIL OVER
1.25µm MIN. NICKEL OVERALL.
 - (4) 0.75µm MIN. SELECTIVE GOLD PLATE ON CONTACT AND
2.00µm MIN. SELECTIVE TIN ON SOLDER TAIL OVER
1.25µm MIN. NICKEL OVERALL.
 - (5) 2.50µm MIN. TIN OVERALL
1.25µm MIN. NICKEL OVERALL
 - (6) 0.75µm MIN. SELECTIVE GOLD PLATE ON BOTH CONTACT
AND SOLDER TAIL OVER 1.25µm MIN. NICKEL OVERALL.
3. PIN PUSHOUT FORCE: 0.85Kg MIN IN EITHER DIRECTION.
4. THE ABOVE CIRCUITS SHOWN IS FOR ILLUSTRATION ONLY.
5. FOR PACKING OPTION PLEASE REFER TO THE TABLE.
6. IRREGULAR CIRCUIT CUTOFF WITHIN BREAKAWAY SECTION IS PERMISSIBLE. CUTTING OR CHIPPING OF THE MAIN BODY IS NOT ACCEPTABLE
7. PRODUCT SPEC PS-87761-001 APPLIES.
8. RECOMMENDED PCB THICKNESS 1.60MM.
9. WAFER TO BE FLAT WITHIN 0.003 mm/mm
10. PACKAGING SPECIFICATION: TRAY: PK-89990-487
BULK: PK-89990-490
TUBE: PK-151017-0001
TAPE & REEL : PK-87858-300

SYMBOLS ▽ = 0 ▽ = 0 ▽ = 0 ▽ = 0 ▽ = 0 ▽ = 0 ▽ = 0 ▽ = 0 ▽ = 0 ▽ = 0 ▽ = 0 ▽ = 0	THIS DRAWING CONTAINS INFORMATION THAT IS PROPRIETARY TO MOLEX ELECTRONIC TECHNOLOGIES, LLC AND SHOULD NOT BE USED WITHOUT WRITTEN PERMISSION		CURRENT REV DESC:			
	mm	NTS	EC NO: 700379			CUSTOMER DRAWING 2.00MM PTICH DUAL ROW DUAL WAFER THROUGH HOLE
	GENERAL TOLERANCES (UNLESS SPECIFIED)		DRWN: DANUSA	2022/03/22		
	4 PLACES ±		CHK'D: DANUSA	2022/03/22		
		APPR: MRAMAKRISHNA	2022/03/25	PRODUCT CUSTOMER DRAWING		
		INITIAL REVISION:		DOCUMENT NUMBER	DOC TYPE	
		DRWN: DRWN BY	XXXX/XX/XX	SD-151017-0001	PSD	
		APPR: APPR BY	XXXX/XX/XX	000	A17	
		DRAFT WHERE APPLICABLE MUST REMAIN WITHIN DIMENSIONS		MATERIAL NUMBER	CUSTOMER	
		THIRD ANGLE PROJECTION	DRAWING	151017	GENERAL MARKET	
			SERIES		SHEET NUMBER	
			A3-SIZE		1 OF 2	

CKT SIZE	DIMENSION	
	A	B
04	4.00	2.00
06	6.00	4.00
08	8.00	6.00
10	10.00	8.00
12	12.00	10.00
14	14.00	12.00
16	16.00	14.00
18	18.00	16.00
20	20.00	18.00
22	22.00	20.00
24	24.00	22.00
26	26.00	24.00
28	28.00	26.00
30	30.00	28.00
32	32.00	30.00
34	34.00	32.00
36	36.00	34.00
38	38.00	36.00
40	40.00	38.00
42	42.00	40.00
44	44.00	42.00
46	46.00	44.00
48	48.00	46.00
50	50.00	48.00

PART NUMBERS	CKT SIZE	VOID POSITION	KINK POSITION	CAP OPTION	DIMENSION					(G)	PLATING PLATING OPTION	PACKAGING TYPE
					MODIFIED MATING END	MATING END	STACKER HEIGHT	SOLDER TAIL	(F)			
					M1	M	(H)	P				
151017-0401	04	----	----	----	----	8.50	16.50	3.00	28.00	-	3	TRAY
151017-0616	06	----	----	----	----	11.90	20.00	2.60	34.50	-	1	TRAY
151017-0617	06	----	----	----	----	5.46	8.18	5.46	19.10	20.45	3	TAPE & REEL
151017-0801	08	----	1,8	----	----	15.05	9.65	3.30	28.00	-	5	TRAY
151017-0803	08	----	----	----	----	15.05	5.00	3.70	23.75	-	5	TRAY
151017-1005	10	----	----	----	----	8.00	20.00	3.00	31.00	-	3	TRAY
151017-1001	10	----	----	----	----	4.00	15.00	4.00	23.00	-	3	TRAY
151017-1002	10	----	----	YES	----	4.00	8.10	3.00	15.10	16.45	5	TAPE & REEL
151017-1003	10	----	----	NO	----	2.60	15.00	2.60	20.20	-	5	TUBE
151017-1004	10	----	----	----	----	4.00	8.10	3.00	15.10	16.45	5	TRAY
151017-1200	12	----	----	YES	----	4.00	8.10	3.00	15.10	16.45	5	TAPE & REEL
151017-1201	12	----	----	----	----	4.00	8.10	3.00	15.10	16.45	5	TRAY
151017-1401	14	----	----	----	----	6.36	15.49	6.34	28.19	-	6	TRAY
151017-1601	16	----	----	YES	4.50 CKT#1& 2	3.50 CKT#3-16	8.00	3.00	15.50	16.35	3	TAPE & REEL
151017-1602	16	----	----	----	----	4.00	15.00	4.00	23.00	-	3	TRAY
151017-2600	26	----	----	----	----	3.00	12.00	3.00	18.00	-	5	TRAY

CAP POSITION ILLUSTRATION FOR REFERENCE



SYMBOLS	THIS DRAWING CONTAINS INFORMATION THAT IS PROPRIETARY TO MOLEX ELECTRONIC TECHNOLOGIES, LLC AND SHOULD NOT BE USED WITHOUT WRITTEN PERMISSION		CURRENT REV DESC:		<p>CUSTOM HEADER 2.00MM PTICH DUAL ROW DUAL WAFER THROUGH HOLE</p> <p>PRODUCT CUSTOMER DRAWING</p>	
	DIMENSION UNITS		SCALE			<p>EC NO: 700379</p> <p>DRWN: DANUSA 2022/03/22</p> <p>CHK'D: DANUSA 2022/03/22</p> <p>APPR: MRAMAKRISHNA 2022/03/25</p>
	mm NTS		GENERAL TOLERANCES (UNLESS SPECIFIED)			
	▽ = 0	4 PLACES ±	MM	INCH		INITIAL REVISION:
▽ = 0	3 PLACES ±			DRWN: DRWN BY XXXX/XX/XX		
▽ = 0	2 PLACES ± 0.2 ±			APPR: APPR BY XXXX/XX/XX		
▽ = 0	1 PLACE ±			DOCUMENT NUMBER		
⊠ = 0	0 PLACES ±			SD-151017-0001		
■ = 0	ANGULAR TOL ± 3.0°			DOC TYPE		
▽ = 0	DRAFT WHERE APPLICABLE MUST REMAIN WITHIN DIMENSIONS			PSD		
	THIRD ANGLE PROJECTION			DOC PART		
				000		
				REVISION		
				A17		
				MATERIAL NUMBER		
				151017		
				CUSTOMER		
				GENERAL MARKET		
				SHEET NUMBER		
				2 OF 2		