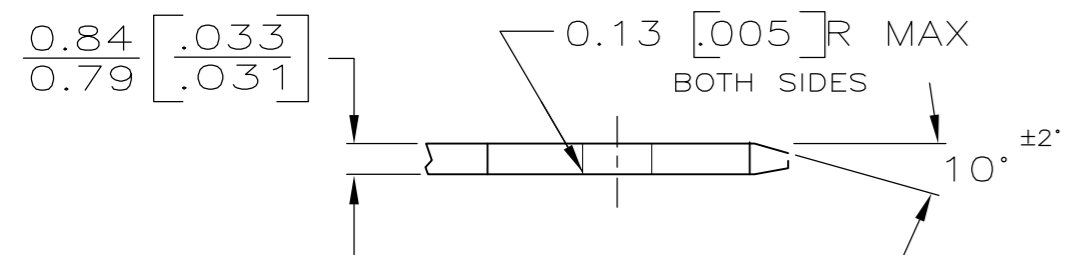
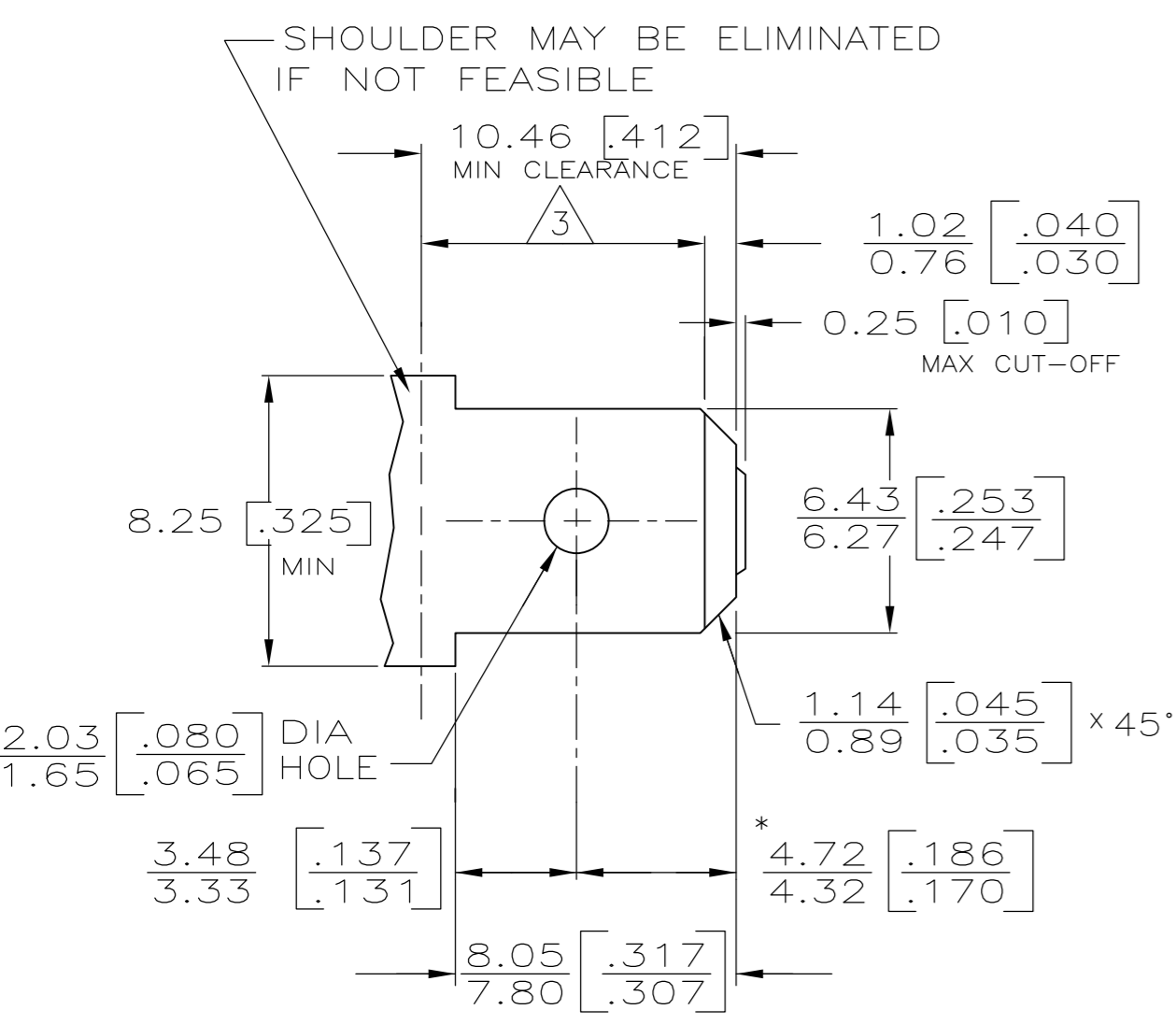


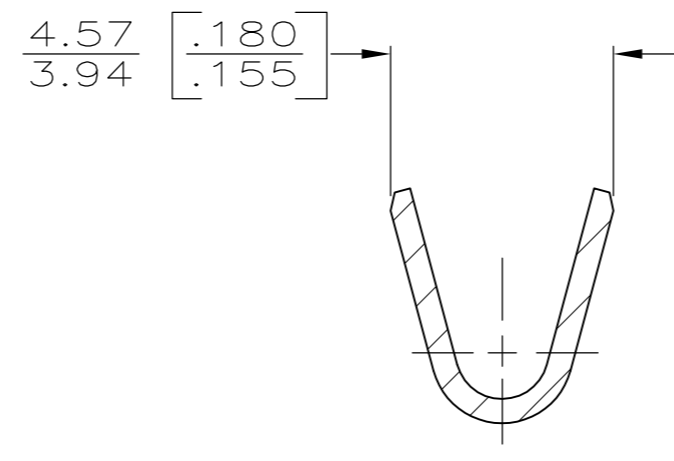
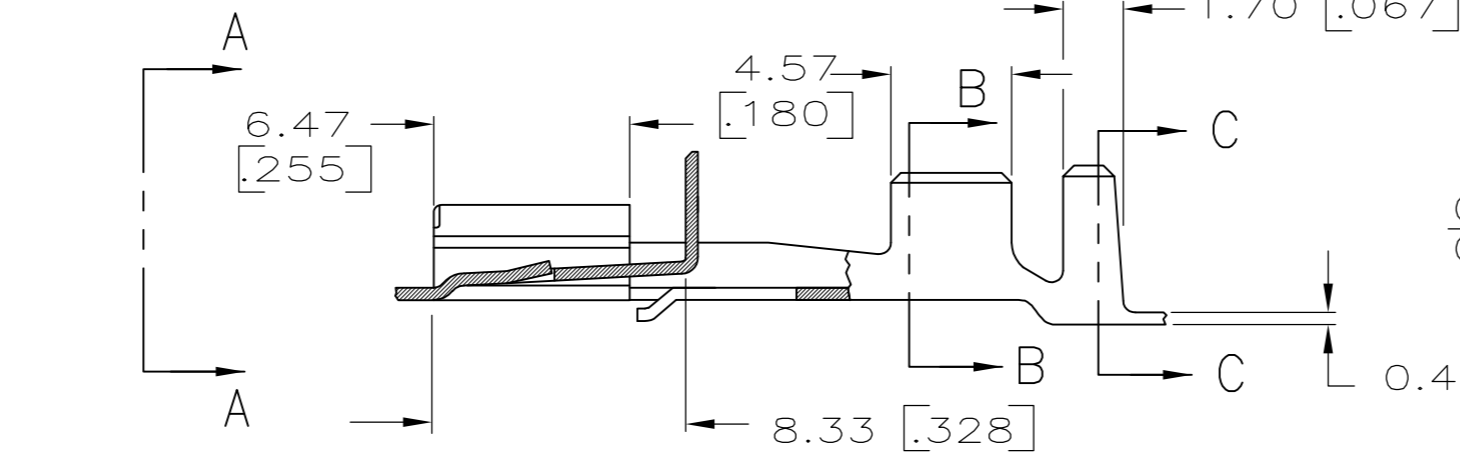
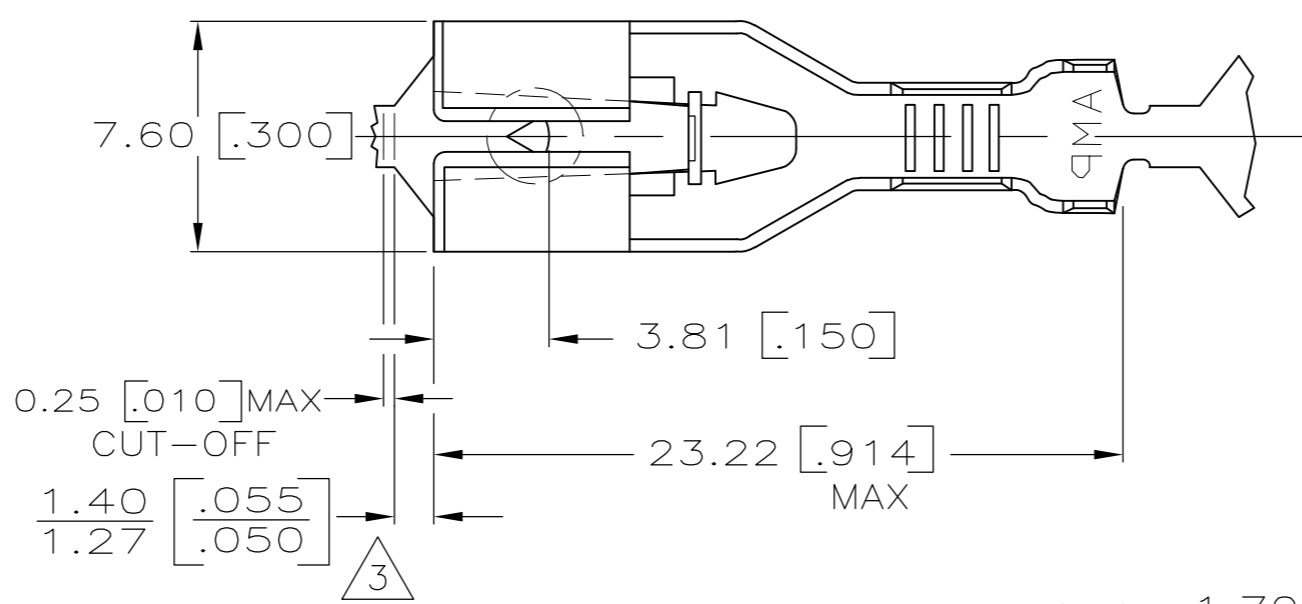
THIS DRAWING IS UNPUBLISHED. RELEASED FOR PUBLICATION. ALL RIGHTS RESERVED.

LOC		DIST		REVISIONS			
P	LTR	DESCRIPTION		DATE	DWN	APVD	
AF	50	L		REVISED PER ECR-12-013486	08JAN13	KH	KR

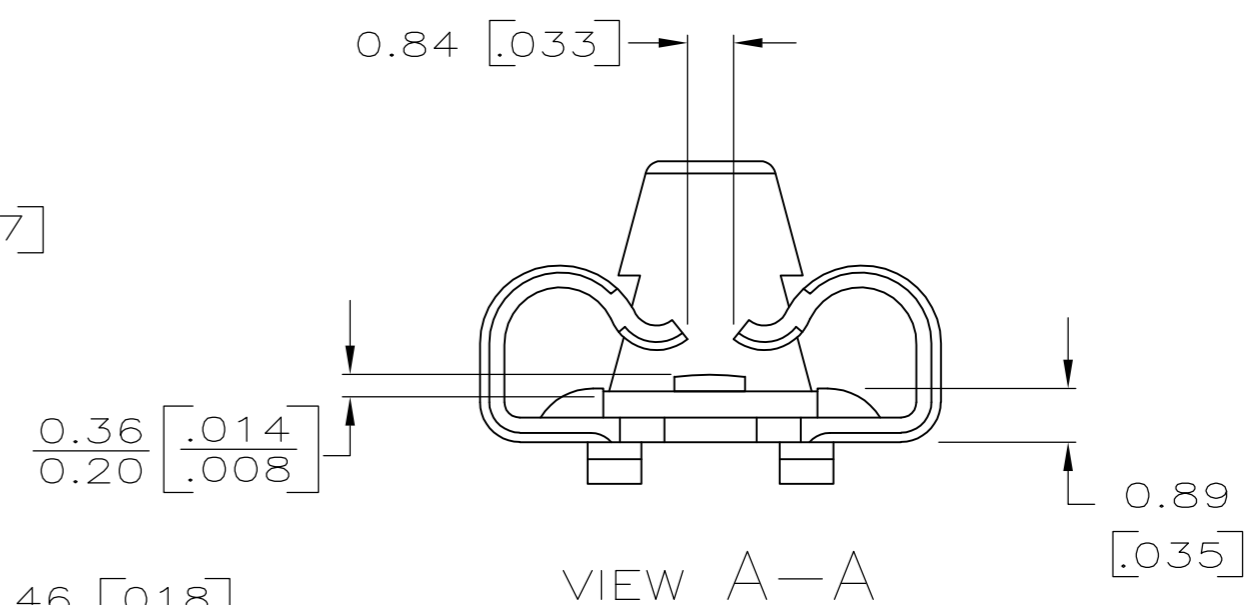
SUGGESTED MATING TAB



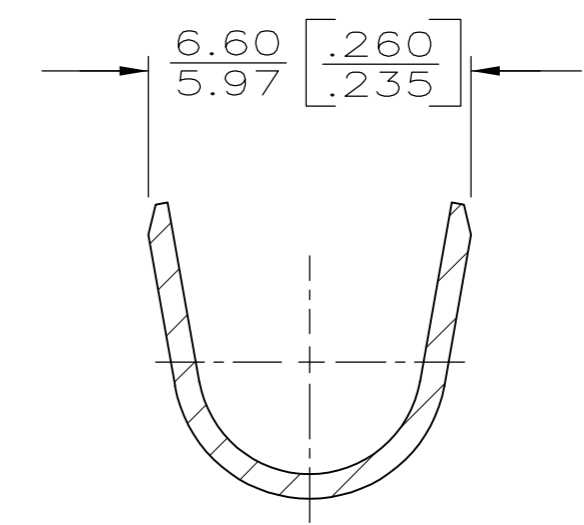
- MATL: 1/2H BRASS OR NICKEL PL STEEL.
 - NO BURRS PERMISSIBLE AT HOLE.
 - 3 MUST BE FLAT WITHIN 0.076 [.003] OVER THIS LENGTH.
 - TIN PLATING IS REQUIRED ON BRASS WHEN TERMINAL TEMP. IS OVER 225°F
 - HOLE MUST BE SYMMETRICAL ABOUT TAB Q WITHIN 0.076 [.003]
- * TO BE USED ONLY WHEN SHOULDER IS ELIMINATED.



SECTION B-B



VIEW A-A



SECTION C-C

- DIMENSIONS IN BRACKETS ARE IN INCHES.
- CONTINUOUS STRIP ON REELS.
- 3 THE 1.40 [.055] / 1.27 [.050] DIMENSION MUST BE MAINTAINED BY THE APPLICATOR CUT-OFF TO ENSURE THE PROPER LOCKING FUNCTION OF THE RECEPTACLE.

3.81-5.08 [.150-.200]	3.0-6.0 mm ² [12-10]	63239-1
INSULATION RANGE	WIRE SIZE	PART NO

THIS DRAWING IS A CONTROLLED DOCUMENT.		DWN	JR RUTH	7/28/86	TE TE Connectivity																	
DIMENSIONS: mm [INCHES]		CHK	G YETTER	1/23/87																		
TOLERANCES UNLESS OTHERWISE SPECIFIED:		APVD	R KUZO	1/23/87																		
<table border="0"> <tr><td>0 PLC</td><td>±</td><td>-</td></tr> <tr><td>1 PLC</td><td>±</td><td>-</td></tr> <tr><td>2 PLC</td><td>±</td><td>-</td></tr> <tr><td>3 PLC</td><td>±</td><td>0.25 [.010]</td></tr> <tr><td>4 PLC</td><td>±</td><td>-</td></tr> <tr><td>ANGLES</td><td>±</td><td>-</td></tr> </table>		0 PLC	±	-		1 PLC	±	-	2 PLC	±	-	3 PLC	±	0.25 [.010]	4 PLC	±	-	ANGLES	±	-	NAME	
0 PLC	±	-																				
1 PLC	±	-																				
2 PLC	±	-																				
3 PLC	±	0.25 [.010]																				
4 PLC	±	-																				
ANGLES	±	-																				
MATERIAL	BRASS	FINISH	TIN	APPLICATION SPEC	114-2074	SIZE	A2	CAGE CODE	00779	DRAWING NO	C=63239	RESTRICTED TO	-									
CUSTOMER DRAWING		WEIGHT	-	SCALE	NTS	SHEET	1 of 1	REV	L													