

Power Inductor AMHS Series

**Automotive
AEC-Q200**

RoHS Compliant
Halogen Free
REACH Compliant



- Shield
- Wire Wound
- Metal
- Ultra High Current

Part Numbering

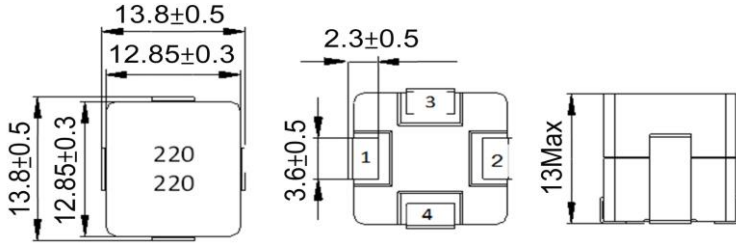
| | | | | | | |
|----------|-------------|--------------|----------------------|-----------------------------|-----------|----------------------------|
| A | MHS | 00 | 131313 | 100 | L | A3 |
| Grade | Series Name | Control Code | Dimensions Code (mm) | Inductance (uH) | Tolerance | Internal Code |
| | | | 131313 13.8x13.8x13 | 8R2 8.2 100 10 220 22 | L ±15% | A3 A6 B1 C3 E1 |

Power Inductor AMHS Series

**Automotive
AEC-Q200**

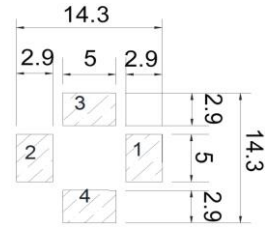
AMHS00131313 Type

■ Dimensions



unit:mm

■ Recommended Land Pattern



unit:mm

■ Electrical Characteristics

| Part No. | Inductance (uH) | Test Freq. | RDC (mΩ)±10% | Isat (A)Typ. | Irms (A)Typ. | Tolerance (±%) | Marking |
|--------------------|-----------------|------------|--------------|--------------|--------------|----------------|---------|
| AMHS001313136R8LA3 | 6.8 | 100kHz,1V | 13.5 | 30 | 11.5 | 15 | 6R8 |
| AMHS001313138R2LA6 | 8.2 | 100kHz,1V | 16 | 25 | 10 | 15 | 8R2 |
| AMHS00131313100LB1 | 10 | 100kHz,1V | 20.5 | 21 | 9 | 15 | 100 |
| AMHS00131313150LC3 | 15 | 100kHz,1V | 33.2 | 16 | 7 | 15 | 150 |
| AMHS00131313220LE1 | 22 | 100kHz,1V | 50 | 15 | 5.5 | 15 | 220 |

Note: When ordering, please specify tolerance code. Tolerance: L=±15%

1. Operating temperature range - 40°C ~ 125°C(Including self - temperature rise)
2. Isat for Inductance drop 20% from its value without current
3. I rms for a 40°C temperature rise from 25°C ambient with current

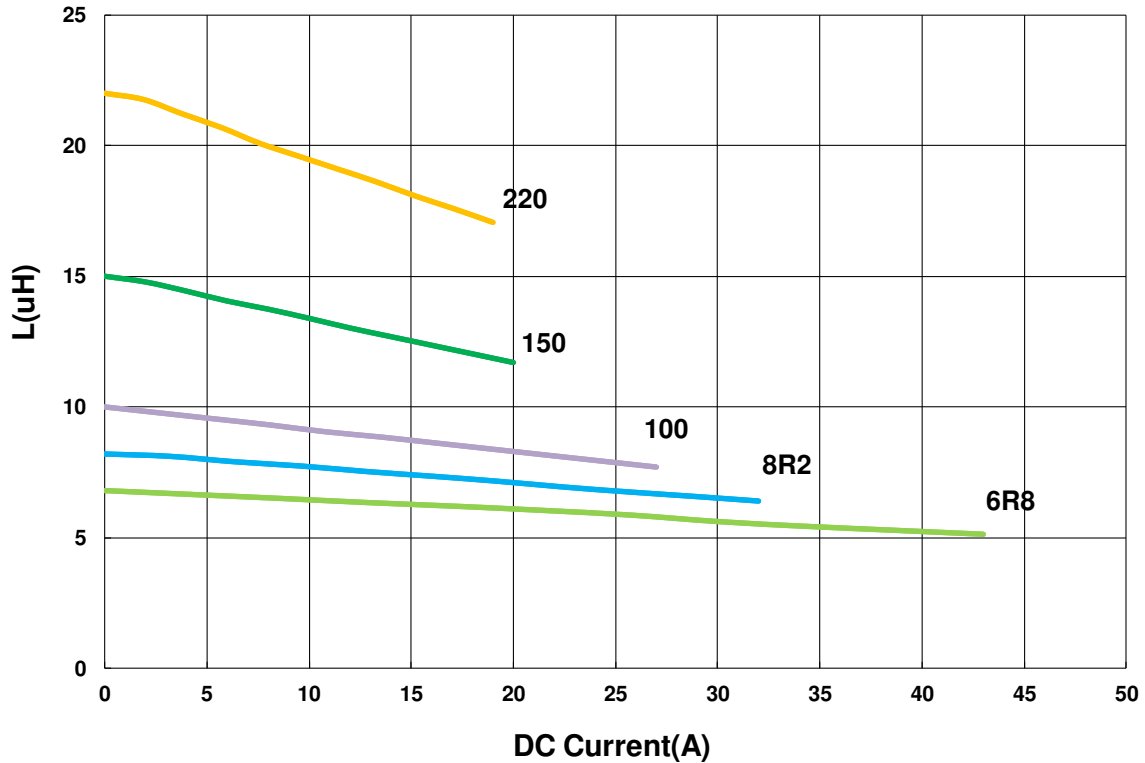
Power Inductor AMHS Series

**Automotive
AEC-Q200**

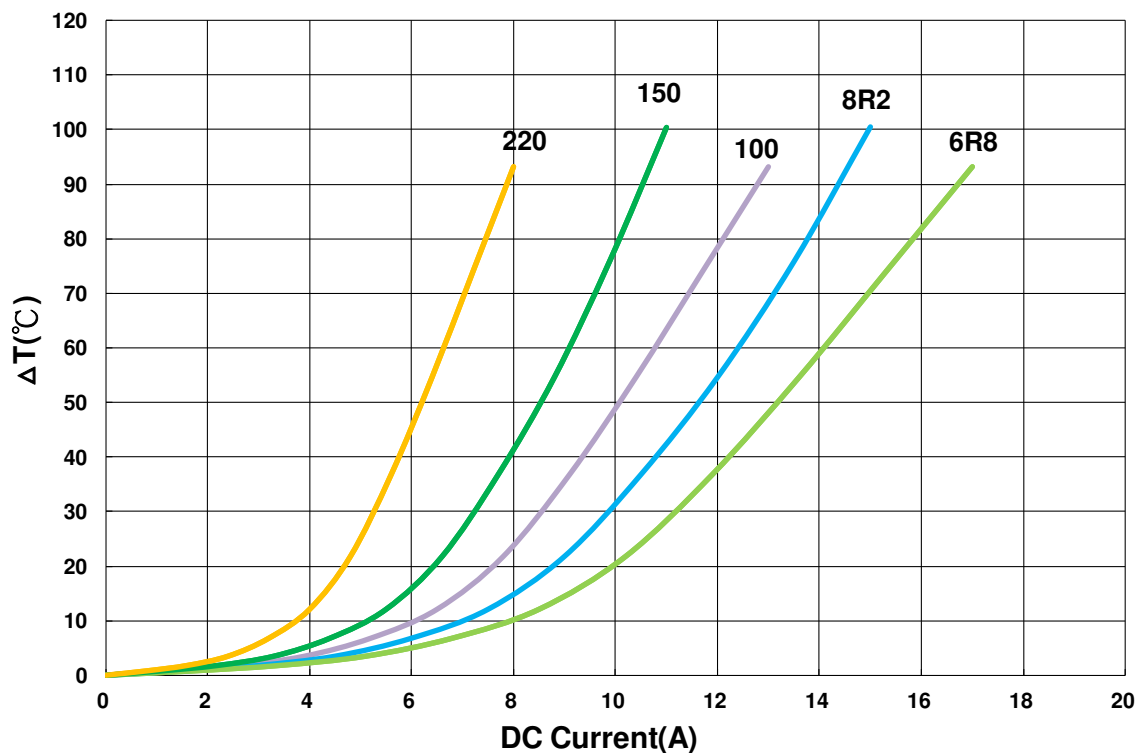
AMHS00131313 Type

Characteristics Graph

Inductance vs DC Current



Temperature Change v.s DC Current

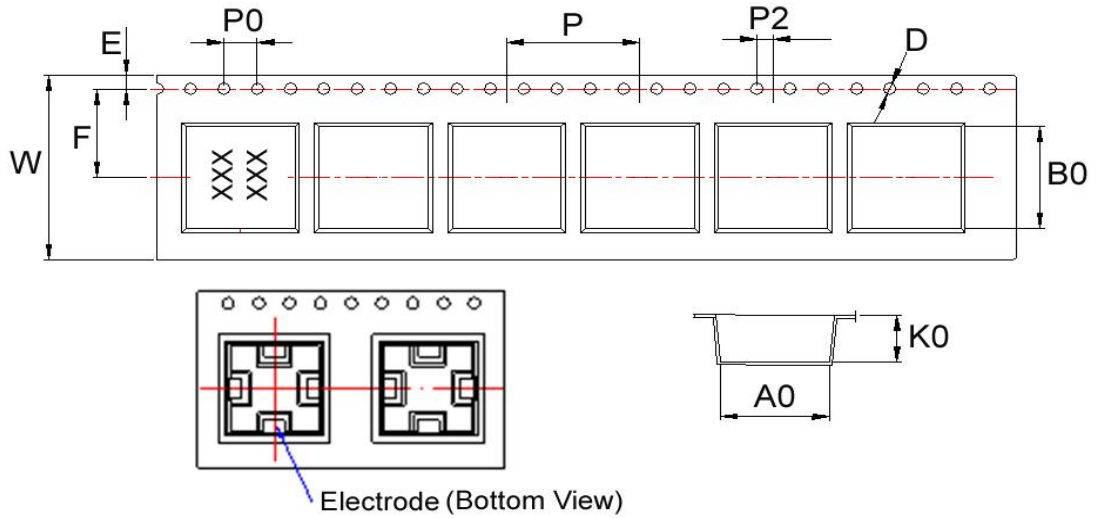


Power Inductor AMHS Series

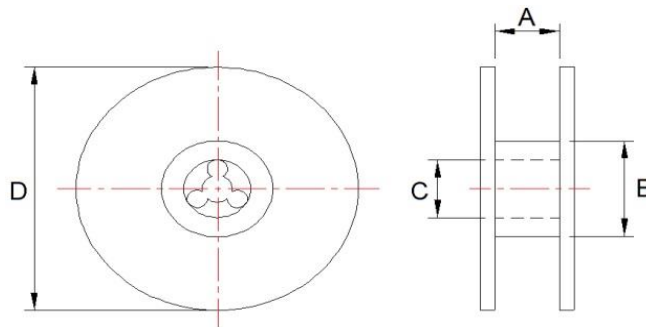
**Automotive
AEC-Q200**

■ Packaging

Tape Dimensions



Reel Dimensions



Dimensions in mm

| TYPE | Tape Dimensions | | | | | | | | | | | Reel Dimensions | | | | Quantity |
|--------------|-----------------|------|------|-----|-----|------|----|----|----|----|----|-----------------|------|-----|------------|----------|
| | A0 | B0 | K0 | D | E | F | W | P | P0 | P2 | A | B | C | D | PCS / REEL | |
| AMHS00131313 | 14.5 | 14.5 | 13.2 | 1.5 | 1.5 | 11.5 | 24 | 20 | 4 | 2 | 24 | 100 | 13.5 | 330 | 250 | |