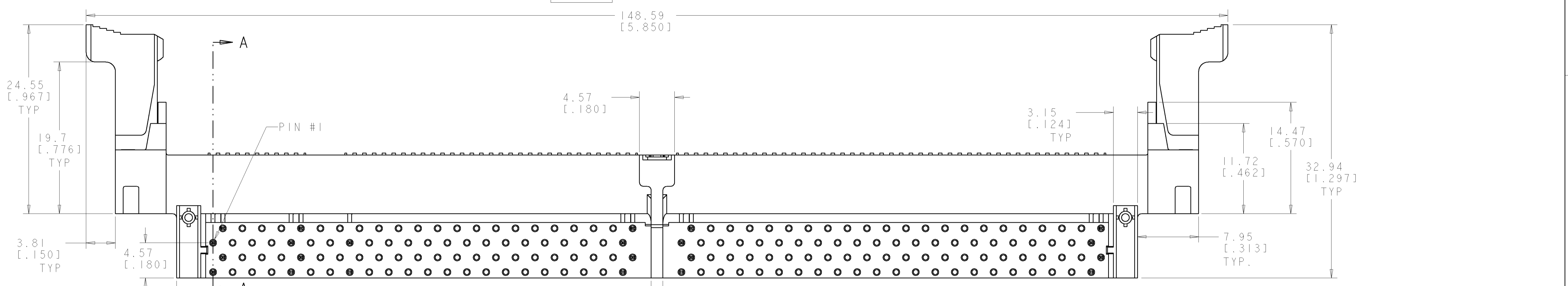
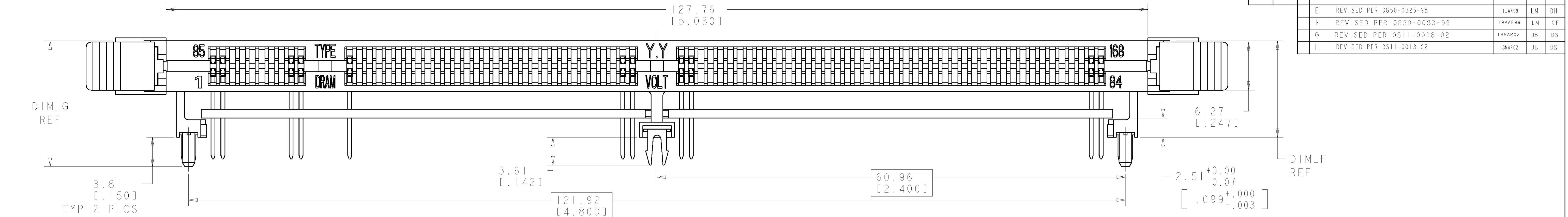


REV	DATE	BY	CHK	APPV
E	11JAN99	LM	DH	
F	19MAR99	LM	CF	
G	18MAR02	JB	DS	
H	18MAR02	JB	DS	

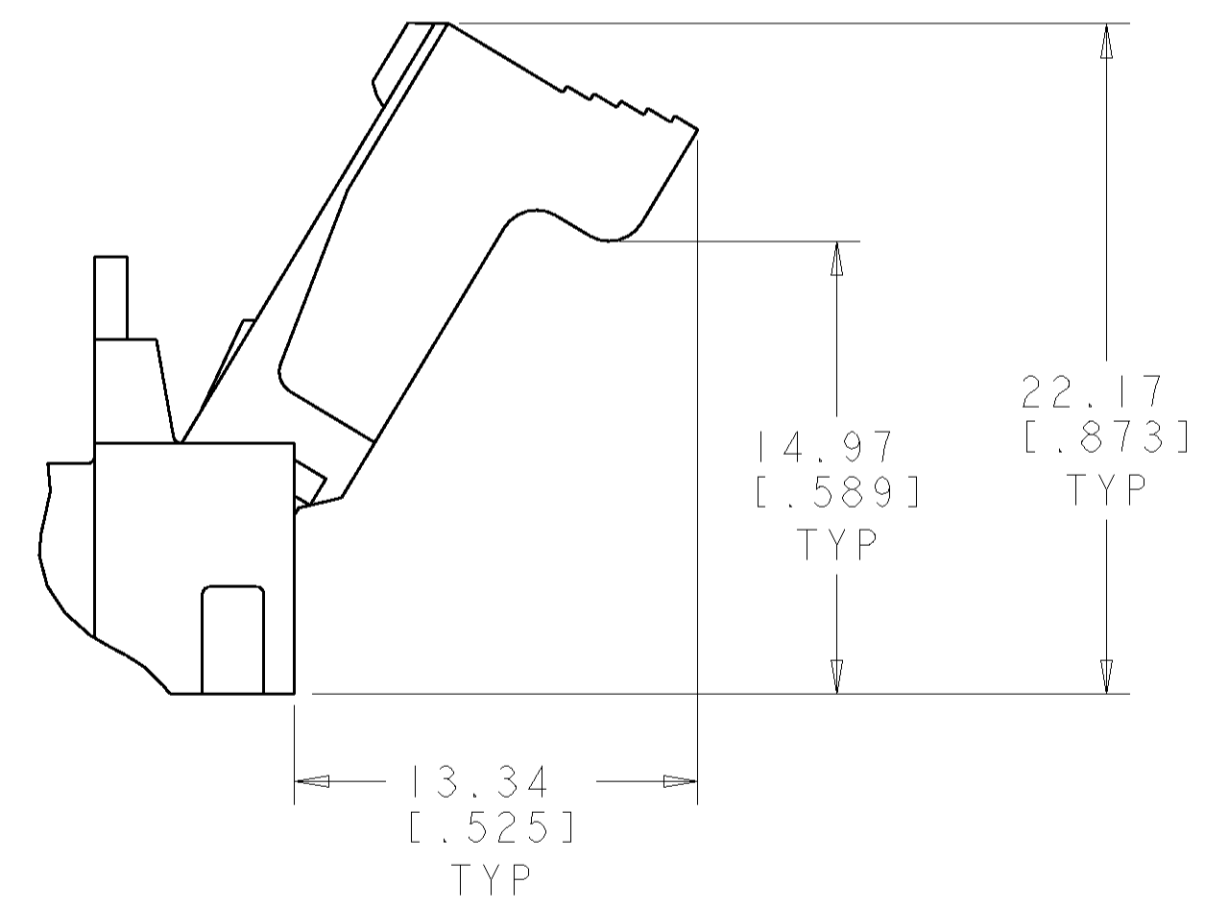


MATERIAL:
 HOUSING: HIGH TEMPERATURE NYLON
 CONTACT: PHOSPHOR BRONZE

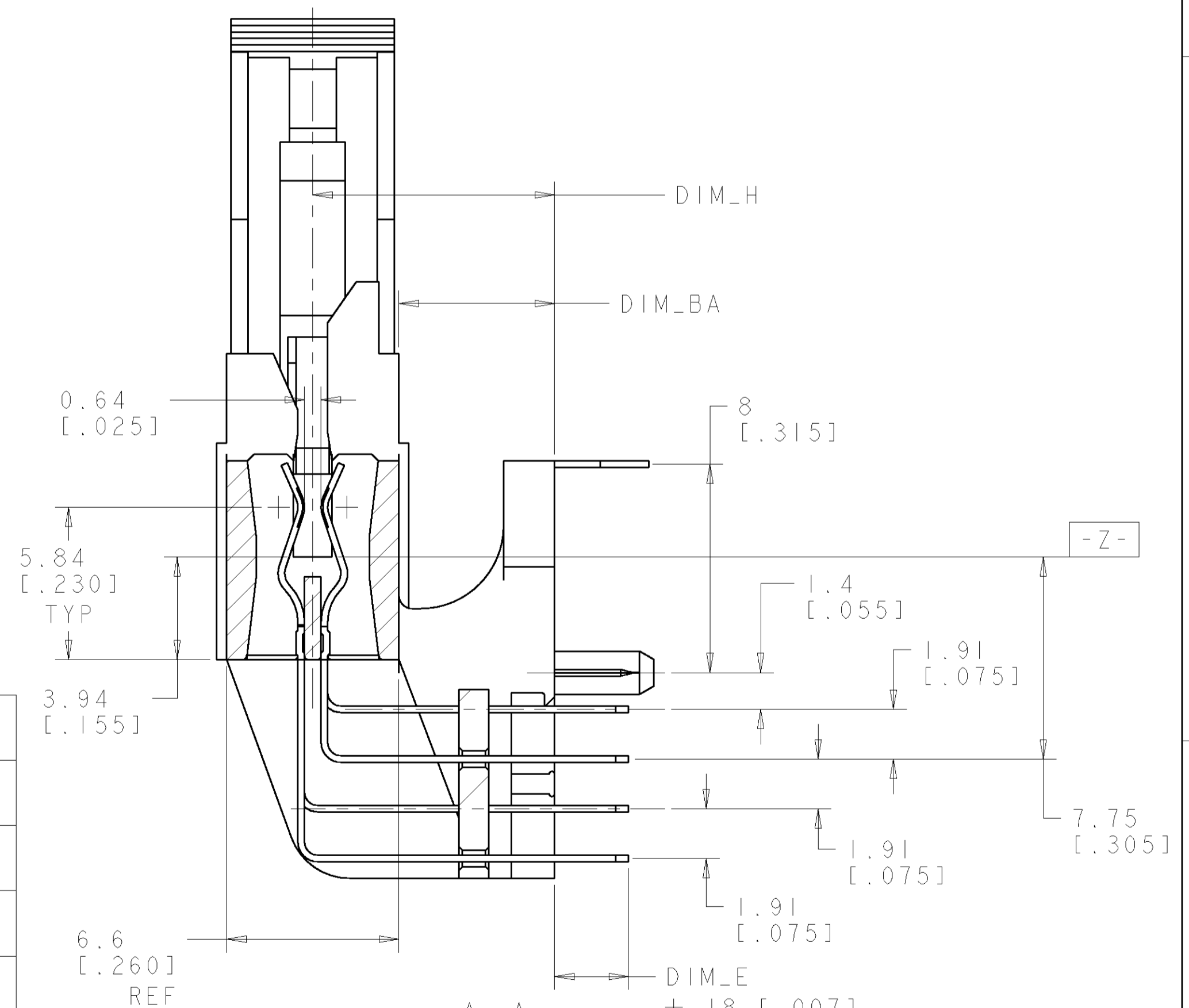
FINISH:
 CONTACT AREA:
 0.00076 [.000030] MIN THICK GOLD OVER
 0.001270 [.000050] MIN THICK NICKEL.
 OR
 0.000076 [.000003] MIN THICK GOLD FLASH OVER
 0.000510 [.000020] MIN THICK PALLADIUM NICKEL OVER
 0.001270 [.000050] MIN THICK NICKEL.
 SOLDER TAIL:
 0.00381 [.000150] MIN THICK TIN LEAD OVER
 0.00064 [.000025] MIN THICK NICKEL.

FOR OPTIMUM PERFORMANCE, PADS SHOULD BE SMOOTH AND FLAT PADS TO BE PLATED WITH:
 0.00102 [.000040] MIN THICK GOLD OVER
 0.00127 [.000050] MIN THICK NICKEL.

390171-6 IS SAME CONNECTOR AS 1-390171-0 EXCEPT WITH LUBRICATED CONTACTS.



EXTRACTOR SHOWN IN THE OPEN POSITION

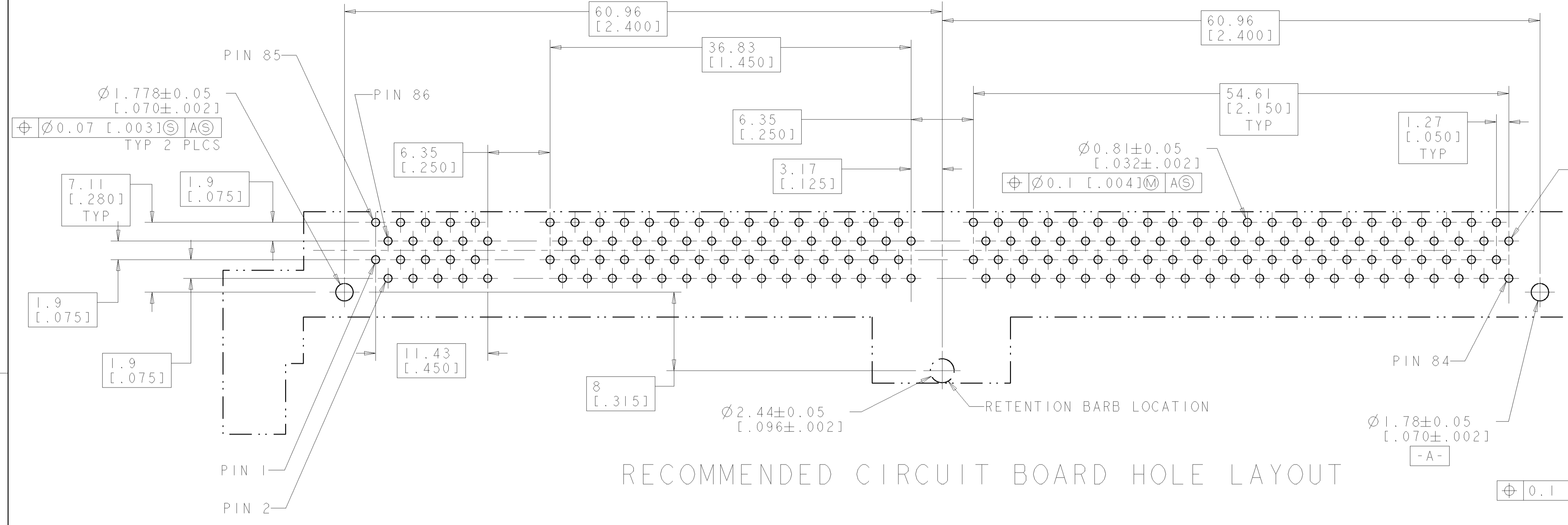


SECTION A-A
 SCALE 6:1

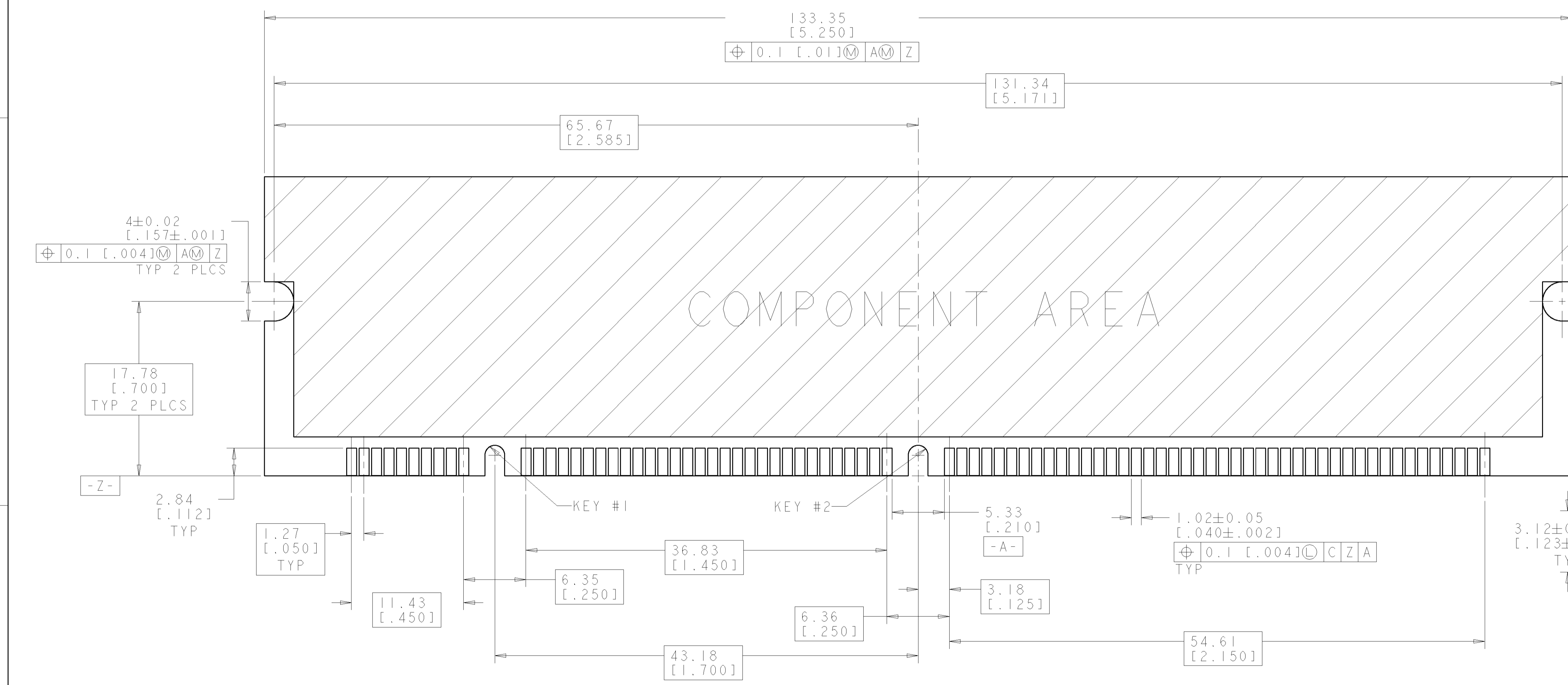
NB	3.3	10.92 [.430]	18.03 [.710]	14.22 [.560]	3.68 [.145]	7.62 [.300]	DETAIL C	DETAIL A	SYNC NON-BUFFERED DRAM, 3.3 VOLT	2-390171-6
NB	3.3	10.92 [.430]	18.03 [.710]	14.22 [.560]	3.18 [.125]	7.62 [.300]	DETAIL C	DETAIL A	SYNC NON-BUFFERED DRAM, 3.3 VOLT	1-390171-6
SYNC	3.3	10.92 [.430]	18.03 [.710]	14.22 [.560]	3.18 [.125]	7.62 [.300]	DETAIL B	DETAIL A	SYNC DRAM, 3.3 VOLT	1-390171-5
STD	3.3	10.92 [.430]	18.03 [.710]	14.22 [.560]	3.18 [.125]	7.62 [.300]	DETAIL A	DETAIL A	STD DRAM, 3.3 VOLT	1-390171-4
NB	3.3	9.27 [.365]	16.38 [.645]	12.57 [.495]	2.83 [.112]	5.97 [.235]	DETAIL C	DETAIL A	SYNC NON-BUFFERED DRAM, 3.3 VOLT	1-390171-0
NB	3.3	9.27 [.365]	16.38 [.645]	12.57 [.495]	2.83 [.112]	5.97 [.235]	DETAIL C	DETAIL A	SYNC NON-BUFFERED DRAM, 3.3 VOLT	390171-6 ⁴
SYNC	3.3	9.27 [.365]	16.38 [.645]	12.57 [.495]	2.83 [.112]	5.97 [.235]	DETAIL B	DETAIL A	SYNC DRAM, 3.3 VOLT	390171-5
STD	3.3	9.27 [.365]	16.38 [.645]	12.57 [.495]	2.83 [.112]	5.97 [.235]	DETAIL A	DETAIL A	STD DRAM, 3.3 VOLT	390171-4
TYPE	Y.Y	DIM_H	DIM_G	DIM_F	DIM_E ±.18 [.007]		KEY #1	KEY #2	PART DESCRIPTION	PART NUMBER

<small>THIS DRAWING IS A CONTROLLED DOCUMENT FOR AMP INCORPORATED. ALL DIMENSIONS ARE IN MILLIMETERS UNLESS OTHERWISE SPECIFIED. ORGANIZATION SHOULD BE CONTACTED FOR THE LATEST REVISIONS.</small>		DWN: J. BURWELL 29JUNE98 CHK: D. HAMMER 29JUNE98 APPV:	AMP AMP Incorporated Harrisburg, PA 17105-3608
DIMENSIONS: mm(INCHES)	TOLERANCES UNLESS OTHERWISE SPECIFIED: 0 PLC ± 1 PLC ± 2 PLC ± 3 PLC ±.13 [.005] 4 PLC ± ANGLES ±1°	PRODUCT SPEC APPLICATION SPEC WEIGHT CUSTOMER DRAWING	NAME: SOCKET, DIMM., DRO, RT ANGLE, 168 POSITION, 17.78mm LOCKING EXTRACTORS. SIZE: A1 CAGE CODE: 00779 DRAWING NO: C=390171 SCALE: 4:1 SHEET 1 OF 2 REV H

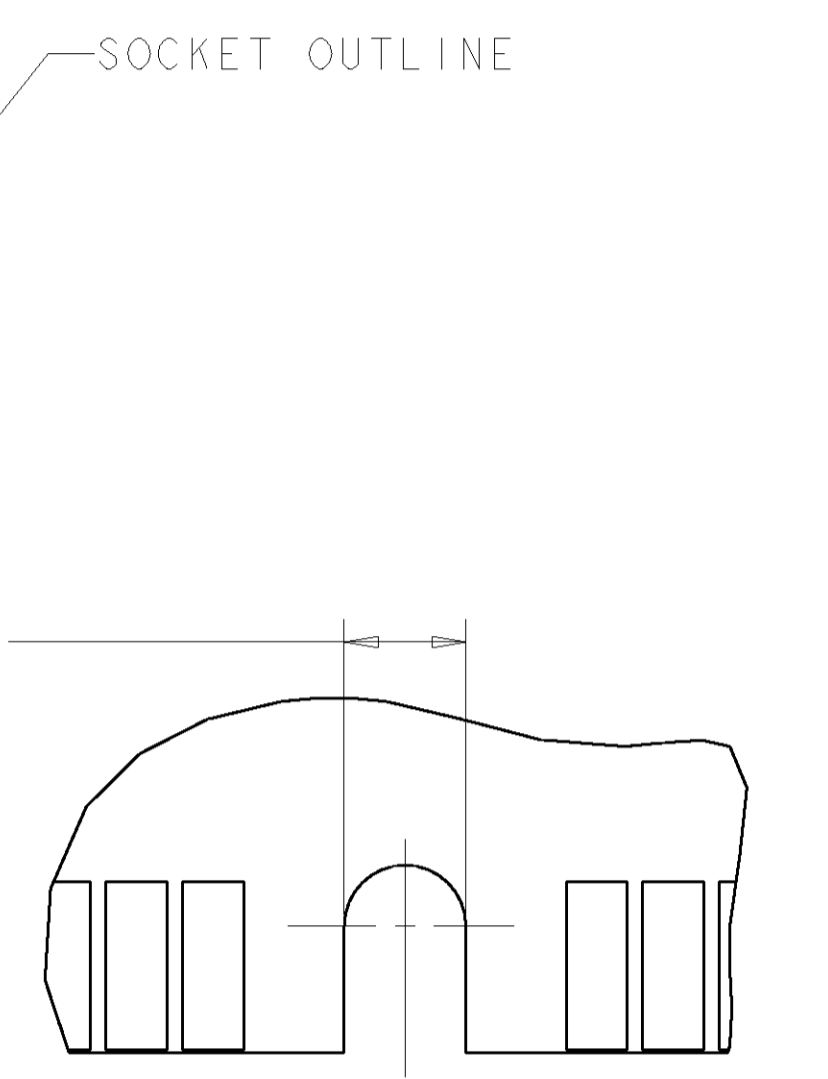
LOC		DIST		REVISIONS			
GP	0	LTW	DESCRIPTION	DATE	DWN	APPD	
-	-	-	SEE SHEET 1	-	-	-	-



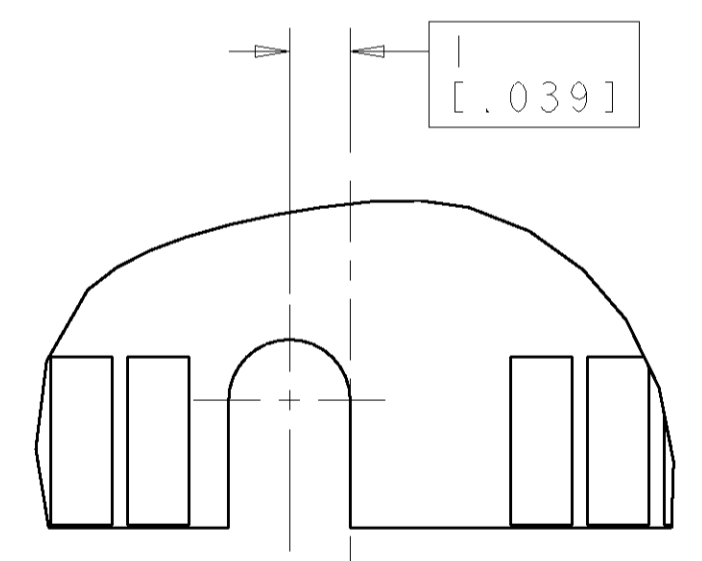
RECOMMENDED CIRCUIT BOARD HOLE LAYOUT



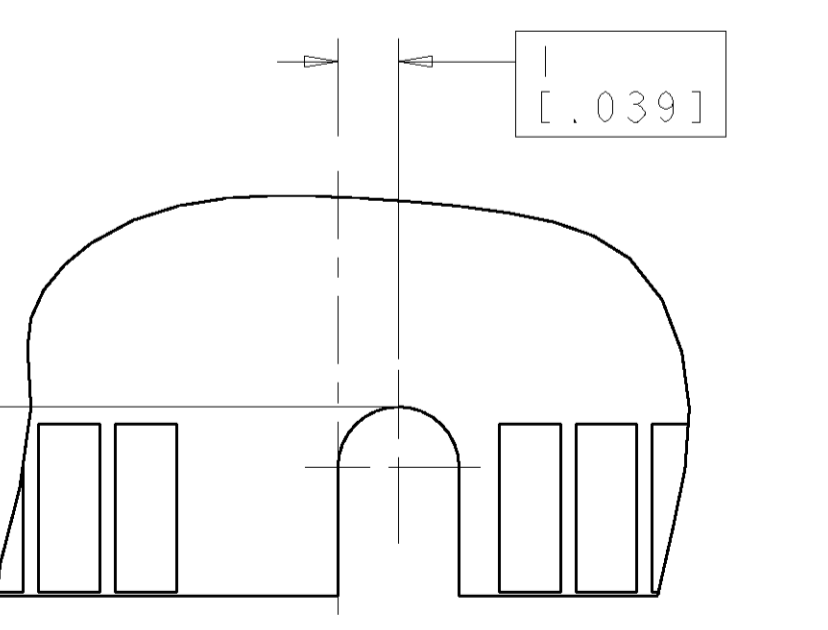
RECOMMENDED MODULE LAYOUT
SEE JEDEC SPEC. MO-161 FOR COMPLETE MODULE DETAILS
1.27±0.10 [0.050±0.004] THICK ACROSS CONTACT PADS



DETAIL A
SCALE 8:1



DETAIL B
SCALE 8:1



DETAIL C
SCALE 8:1

DIMENSIONS: mm [INCHES]		TOLERANCES UNLESS OTHERWISE SPECIFIED:		DWN J. BURWELL 29 JUNE 98		AMP Incorporated Harrisburg, PA 17105-3608	
0 PLC	±	0.13 [0.005]	±	APPD D. HAMMER 29 JUNE 98	NAME SOCKET, DIMM., DRO, RT ANGLE, 168 POSITION, 17.78mm LOCKING EXTRACTORS.		
1 PLC	±	±	±	PRODUCT SPEC			
2 PLC	±	±	±	APPLICATION SPEC			
3 PLC	±	±	±	WEIGHT			
4 PLC	±	±	±	SIZE A1 00779			
FINISH	±	±	±	DRAWING NO. C=390171			
MATERIAL				CUSTOMER DRAWING			
				SCALE 1:1 SHEET 2 OF 2 REV H			