

MATERIALS AND FINISHES

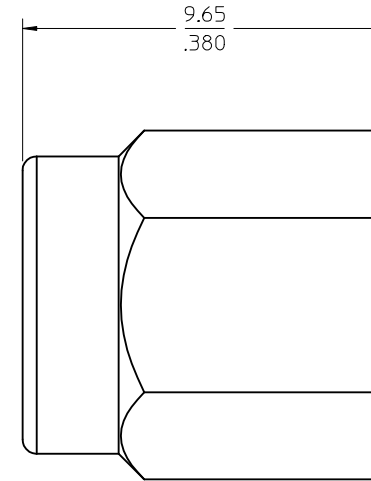
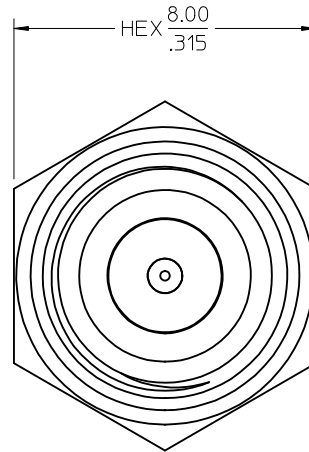
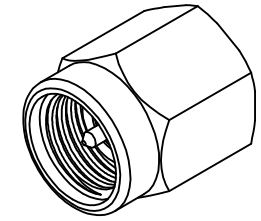
BODY OUTER: BRASS
PLATED SEE TABLE

BODY INNER: BRASS
PLATED GOLD

CONTACT: BRASS
PLATED GOLD

INSULATOR: TEFLON

RESISTOR: 2 100 OHM ±1% CHIP RESISTORS



MIL-STD-348A, FIG. 310.1	INTERFACE
SPECIFICATION	DESCRIPTION

73251-3492	GOLD	73391-0681	TRAY 20 CAV.
73251-3491	NICKEL	73391-0680	TRAY 80 CAV.
73251-3490	GOLD	73391-0681	TRAY 80 CAV.
PART NO	FINISH	SAME AS	PACKAGING

CHG: -3492 AND SPECIFIED PACKAGING FOR -3490 THRU -3492 PER PDR13021270 IEC NO: URF2013-0471 2013/02/06 DRWR:YEH CHKD: APPR:MHUANG 2013/03/05	QUALITY SYMBOLS	DESCRIPTION
	▽=0	
	▽=0	
	▽=0	
REV	A4	

GENERAL TOLERANCES (UNLESS SPECIFIED)		DIMENSION STYLE MM/IN	
	mm	INCH	
4 PLACES	± .004	± .001	DRAWN BY: AZR DATE: 2008/08/22
3 PLACES	± .004	± .001	CHECKED BY: SSS DATE: 2008/08/22
2 PLACES	± .004	± .001	APPROVED BY: JDW DATE: 2008/08/22
1 PLACE	± .004	± .001	
0 PLACE	± .004	± .001	
ANGULAR ± 2 °		MATERIAL NO.	
DRAFT WHERE APPLICABLE MUST REMAIN WITHIN DIMENSIONS		SEE TABLE	

SCALE 10:1	DESIGN UNITS METRIC	THIRD ANGLE PROJECTION
TITLE SMA PLUG TERMINATION SMA-P, EWR-3728		
molex		
DOCUMENT NO. SD-73251-349	SHEET NO. 1 OF 1	
THIS DRAWING CONTAINS INFORMATION THAT IS PROPRIETARY TO MOLEX INCORPORATED AND SHOULD NOT BE USED WITHOUT WRITTEN PERMISSION		