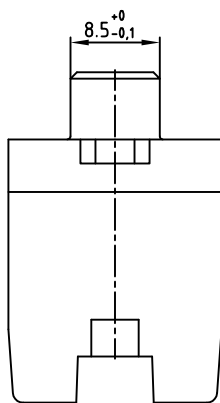
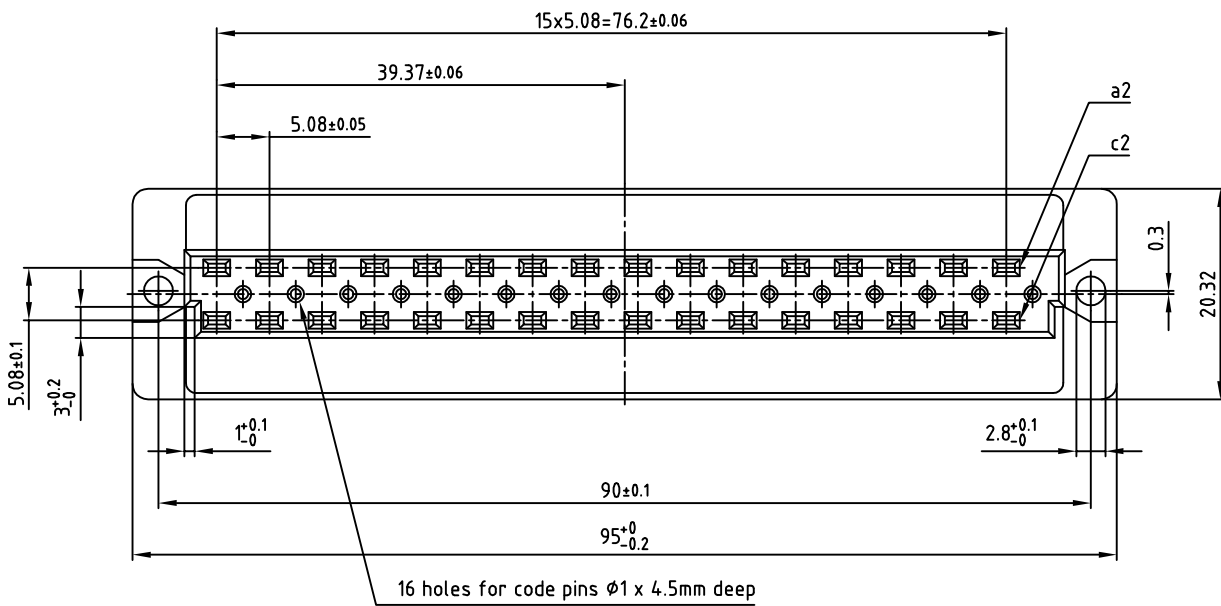
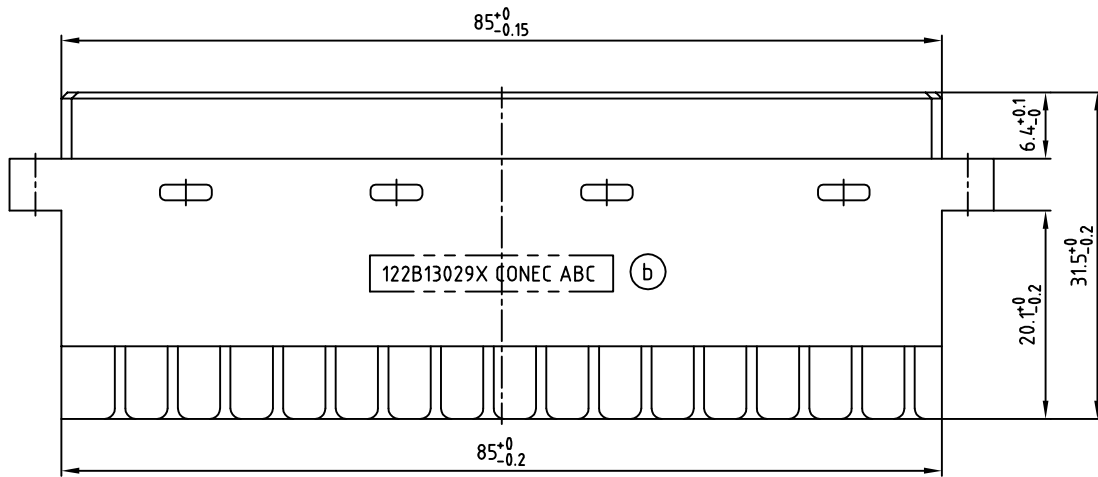


used for: DIN EN 60603-2 TYPE "D"



Technical Data

Conductor size: AWG 24...16
 Rated current: 6A
 Rated voltage: 300/250 V~
 Moulding material: PBT GF grey
 Operating temperature: -55°C to +120°C
 Flammability: UL 94 V-0
 Contact material: CuSn 6
 Contact finish: Au over Ni
 Screw connection: steel

Directive 2002/95/EC RoHS compliant

THIS DRAWING MAY NOT BE COPIED OR
 REPRODUCED IN ANY WAY, AND MAY NOT
 BE PASSED ON TO A THIRD PARTY, WITHOUT
 WRITTEN PERMISSION.
 OWNERSHIP AND COPYRIGHT OF CONEC GmbH
 DO NOT ALTER CAD DRAWING BY HAND

tolerance		dim. in mm	
2010	date	name	
drawn	12.10.	Henneboel	
appd.	13.10.	Koch	
norm	DIN EN 60603-2		
d-old			
2 x b	Ä3966	13.04.2011	K.H.
a	Original		
rev.	description	date	name



scale:	2:1	
material:	SEE NOTES	
title:	FEMALE CONNECTOR TYPE "D" 32pos. with screw termination	
dwg no:	12K1A700	DIN-A 3 sh: 1/1
part no:	122B13029X	