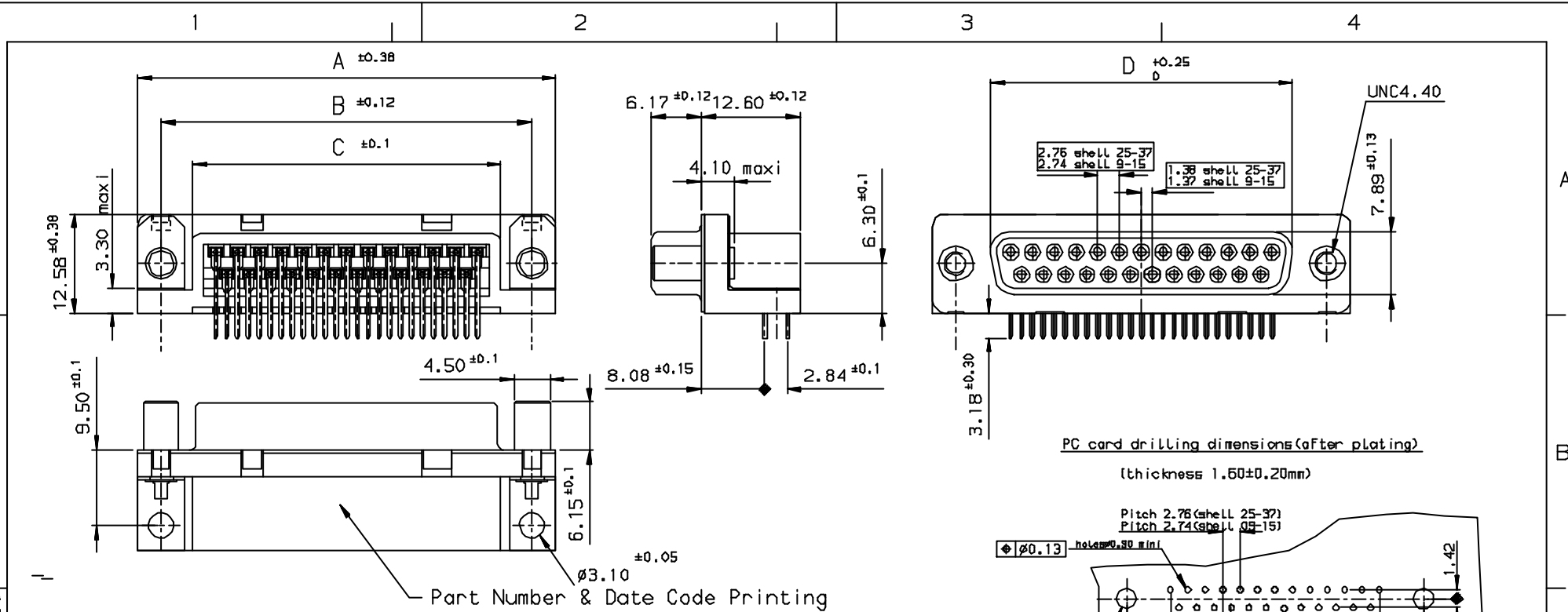


Tous droits strictement réservés. Reproduction ou communication à des tiers interdite sans autorisation écrite de la propriété de FCI. Droits de reproduction FCI.

FCI

All rights strictly reserved. Reproduction or communication to third parties in any form without the written authorization of the property of FCI. Copyright FCI.



SHELL	A±0.38	B±0.12	C±0.10	D±0.25	E±0.07	PART NUMBER
09	30.81	24.99	16.96	16.21	10.96	D09533E4UV00**
15	39.14	33.32	25.18	24.54	19.18	D15533E4UV00**
25	53.03	47.04	39.12	38.25	33.12	D25533E4UV00**
37	69.32	63.50	55.68	54.71	49.68	D37533E4UV00**

REQUIREMENTS

Technical characteristics:

Shell: steel tin plated
 Insulators: self-extinguishing black polyester, UL Class 94V0
 Contacts size 20: phosphor bronze, gold flash on mating end, bright tin on termination end over nickel on entire contact
 Cycles > 200

Metal plate for electrical continuity: brass, tin plated

Screwlock: brass, tin plated

Electrical characteristics:

max. current rating: 5A
 Test voltage: 1000V
 Rated voltage: 300V
 Contact resistance: <15mΩ
 Shell resistance: <5mΩ
 Insulation resistance: >5000MΩ

Climatic characteristics:

Operating temperature range: -55°C +125°C

Dimensions:

In accordance with MIL-C-24308

LF FOR LEAD FREE

FOR ROHS DETAILS REFER DWG. NO. C01-8646-0000

Utr	Eon no	Dr	date
b	105-0124	J8	27/7/05

Dr JOHN SLEEBA 7/4/93		Product Family	DELTA-D	Tolerance	LINEAR ±0.1 ANGULAR ±1°	Projection	MM
Eng GEORGE VJ 7/4/93		Spec ref				Size	A3
Chr GEORGE VJ 27/7/05		Material				Scale	
Appr K Somasundaram 27/7/05						ECN	
FCI		Title SOCKET CONNECT. DELTA D right angle screwlock & metal plate		Dwg no C01-8646-0157		Rev. b	
Catalog no		DELTA-D		CUSTOMER COPY		Sheet 1 of 1	

INDEX	DATE	REVISION DESCRIPTION
b	27/7/05	LEAD FREE DETAILS ADDED