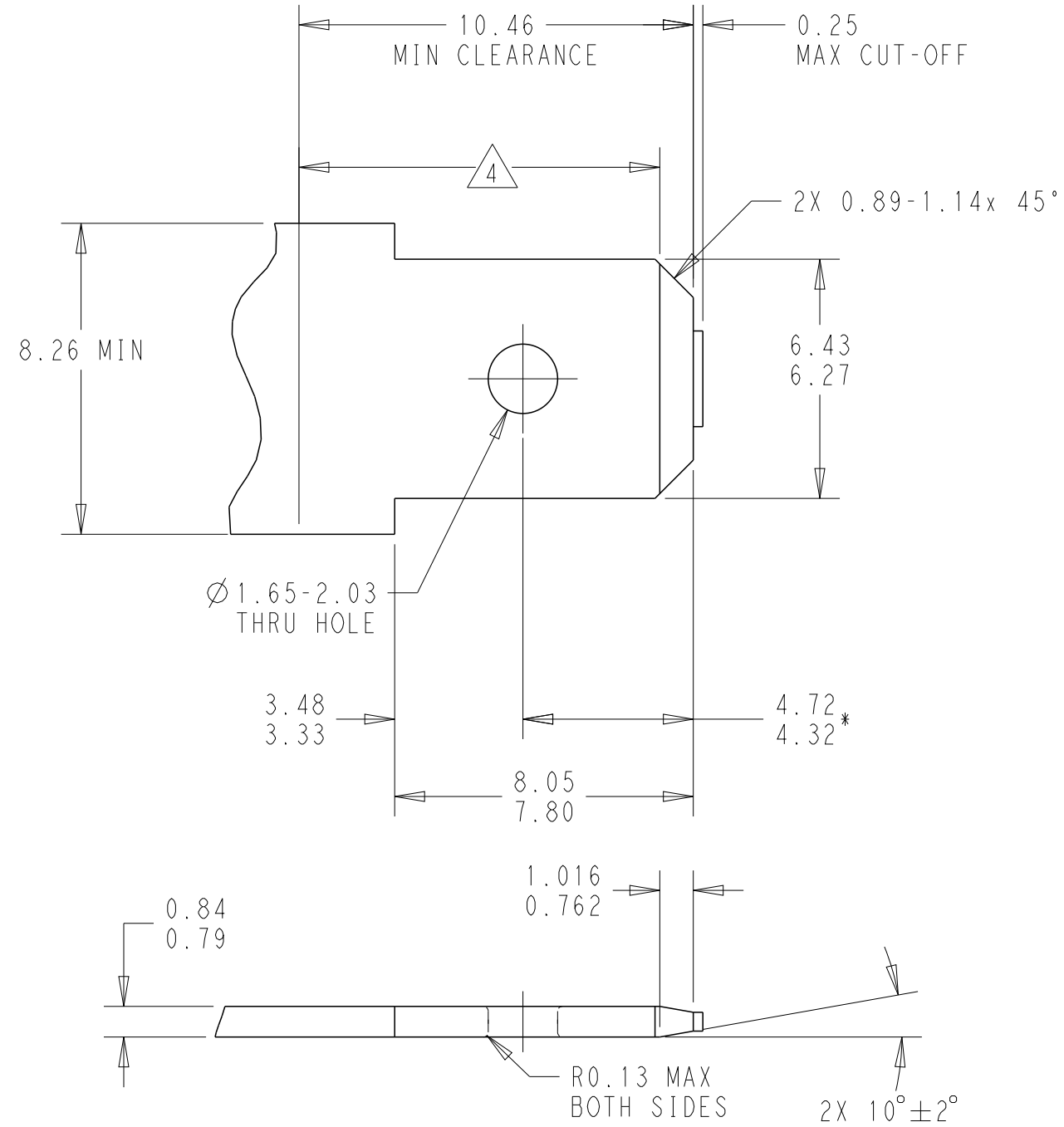
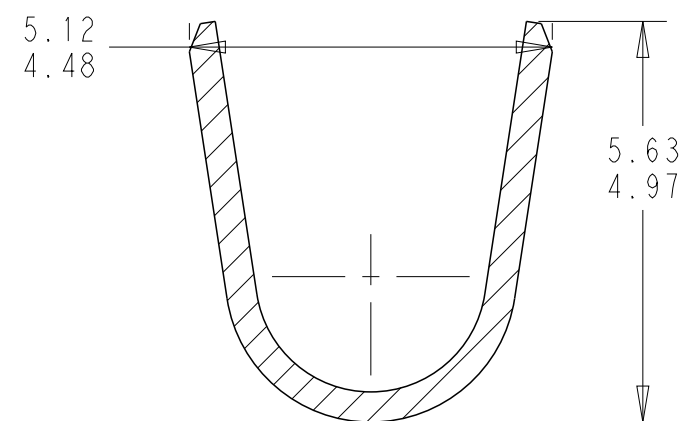


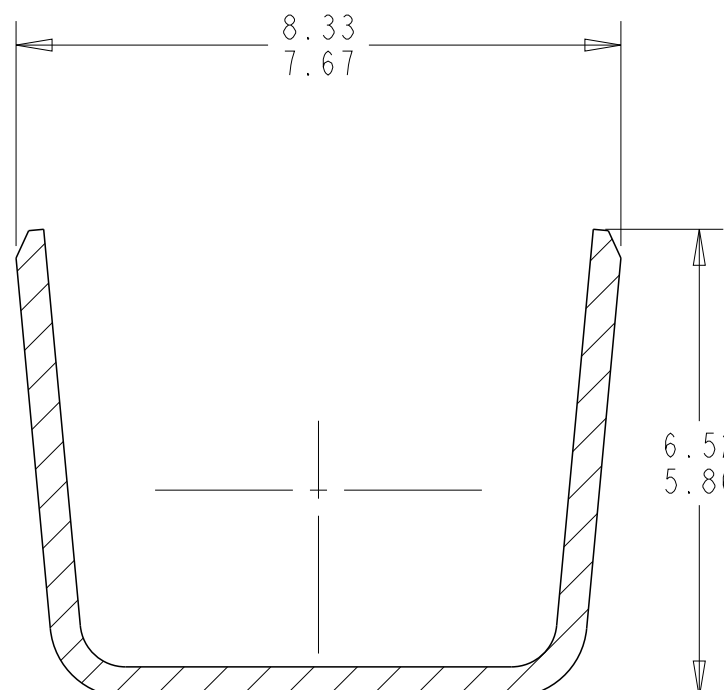
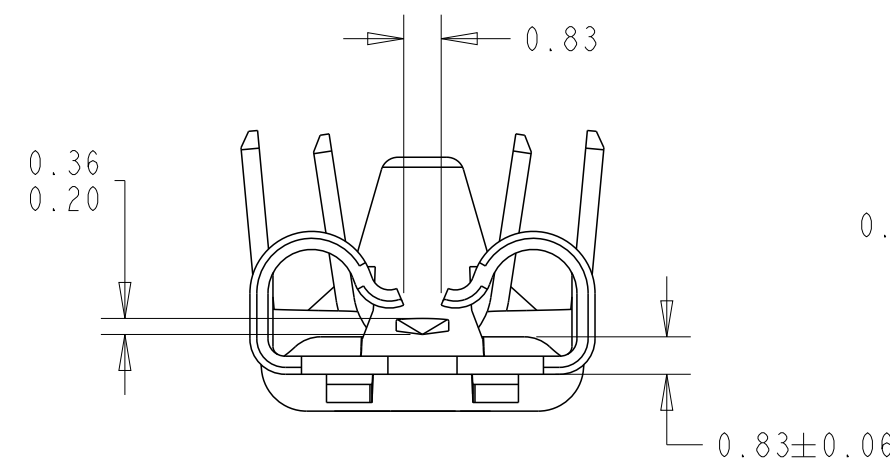
# SUGGESTED MATING TAB



1. MATERIAL: 1/2 HARD BRASS OR NICKEL PLATED STEEL
  2. NO BURRS PERMISSIBLE AROUND HOLE
  3. TIN PLATING IS REQUIRED ON BRASS WHEN TERMINAL TEMPERATURE IS OVER 225°F
  4. MUST BE FLAT WITHIN 0.08 OVER THIS LENGTH
  5. HOLE MUST BE SYMMETRICAL ABOUT TAB  $\phi$  WITHIN 0.08.
- \* TO BE USED ONLY WHEN SHOULDER IS ELIMINATED.



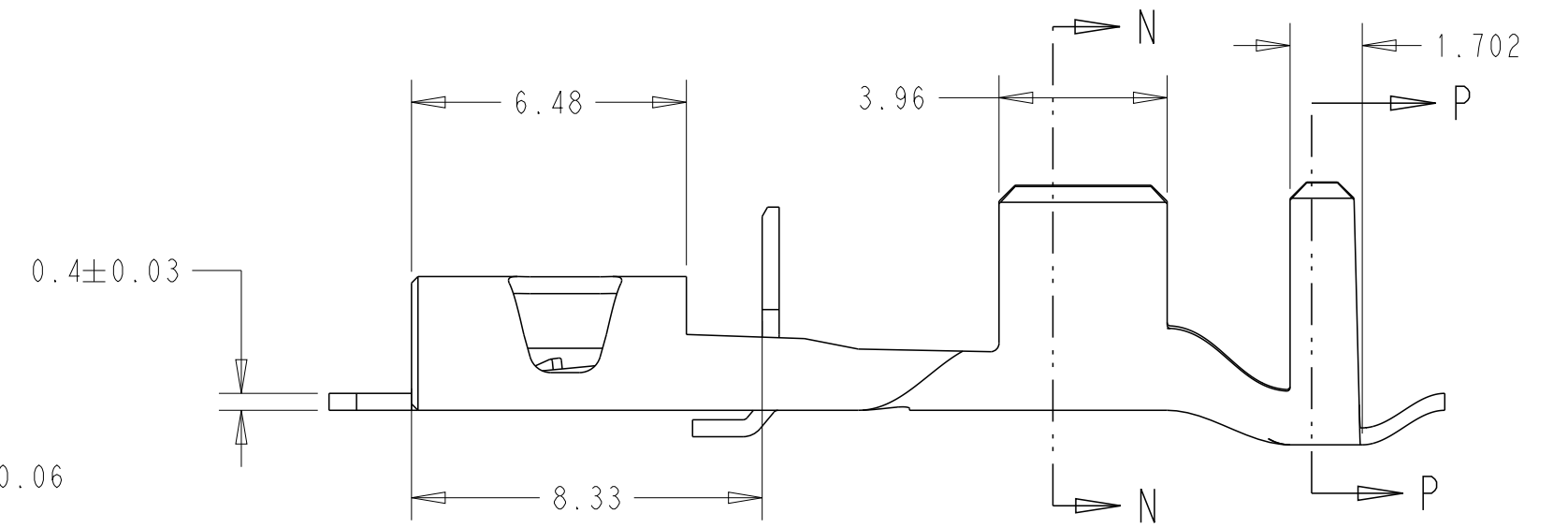
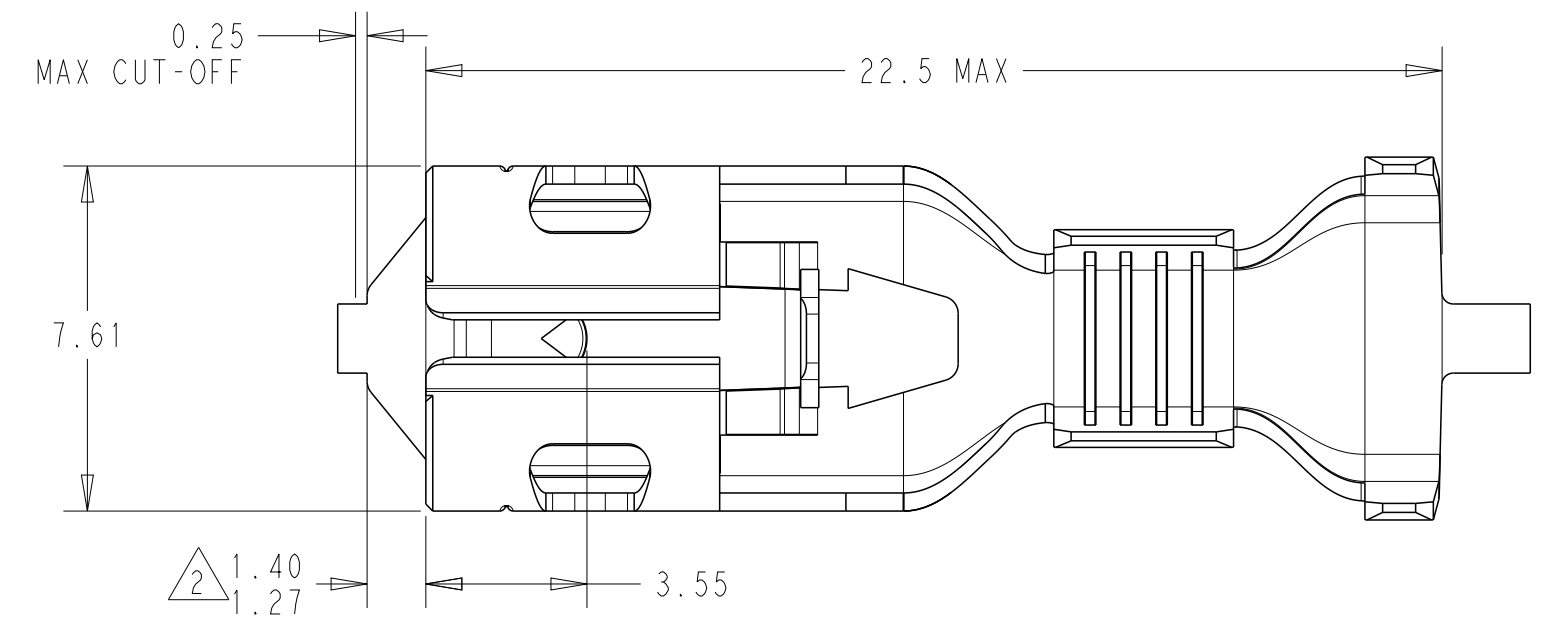
SECTION N-N  
SCALE 10:1



SECTION P-P  
SCALE 10:1

REVISIONS					
P	LTR	DESCRIPTION	DATE	DWN	APVD
	4	NOTE 3 UPDATED	10NOV2020	BKW	KR
	A	REVISED PER ECN-21-112112	09AUG2021	BDA	KR
	A1	REVISED PER ECN-22-173509	07SEP2022	TDB	KR
	B	REVISED PER ECN-23-193388	12JAN2023	TDB	KR

1. CONTINUOUS STRIP ON REELS, BREAKS MAY BE PRESENT
2. THIS DIMENSION MUST BE MAINTAINED FOR PROPER FUNCTION OF THE LATCHING MECHANISM.
3. WIRE RANGE:  
 (2) 14 AWG STRANDED / (2) 3.50 INSULATION DIAMETER DOUBLE WIRE  
 (1) 16 AWG + (1) 14 AWG STRANDED / (1) 3.11 + (1) 3.50 INSULATION DIAMETER DOUBLE WIRE  
 (1) 18 AWG + (1) 14 AWG STRANDED / (1) 2.80 + (1) 3.50 INSULATION DIAMETER DOUBLE WIRE
4. THIS TERMINAL MUST BE USED WITH A TIN PLATED TAB



UNPLATED $\triangle$ 4	BRASS	2238285-1
FINISH	MATERIAL	PART NUMBER

THIS DRAWING IS A CONTROLLED DOCUMENT.		DWN B. WEAVER 05 JUN 2020	TE Connectivity	
DIMENSIONS: mm		CHK K. RANDOLPH 05 JUN 2020	RECEPTACLE, POSITIVE-LOCK 250 SERIES	
TOLERANCES UNLESS OTHERWISE SPECIFIED: 0 PLC ± 1 PLC ± 2 PLC ±0.25 3 PLC ± 4 PLC ± ANGLES ±		APVD W. MOYER 05 JUN 2020	RESTRICTED TO	
MATERIAL SEE TABLE		PRODUCT SPEC -	SIZE A2	CAGE CODE 00779
FINISH SEE TABLE		APPLICATION SPEC 114-2074	DRAWING NO C-2238285	REV B
CUSTOMER DRAWING		WEIGHT -	SCALE 6:1	SHEET 1 OF 1