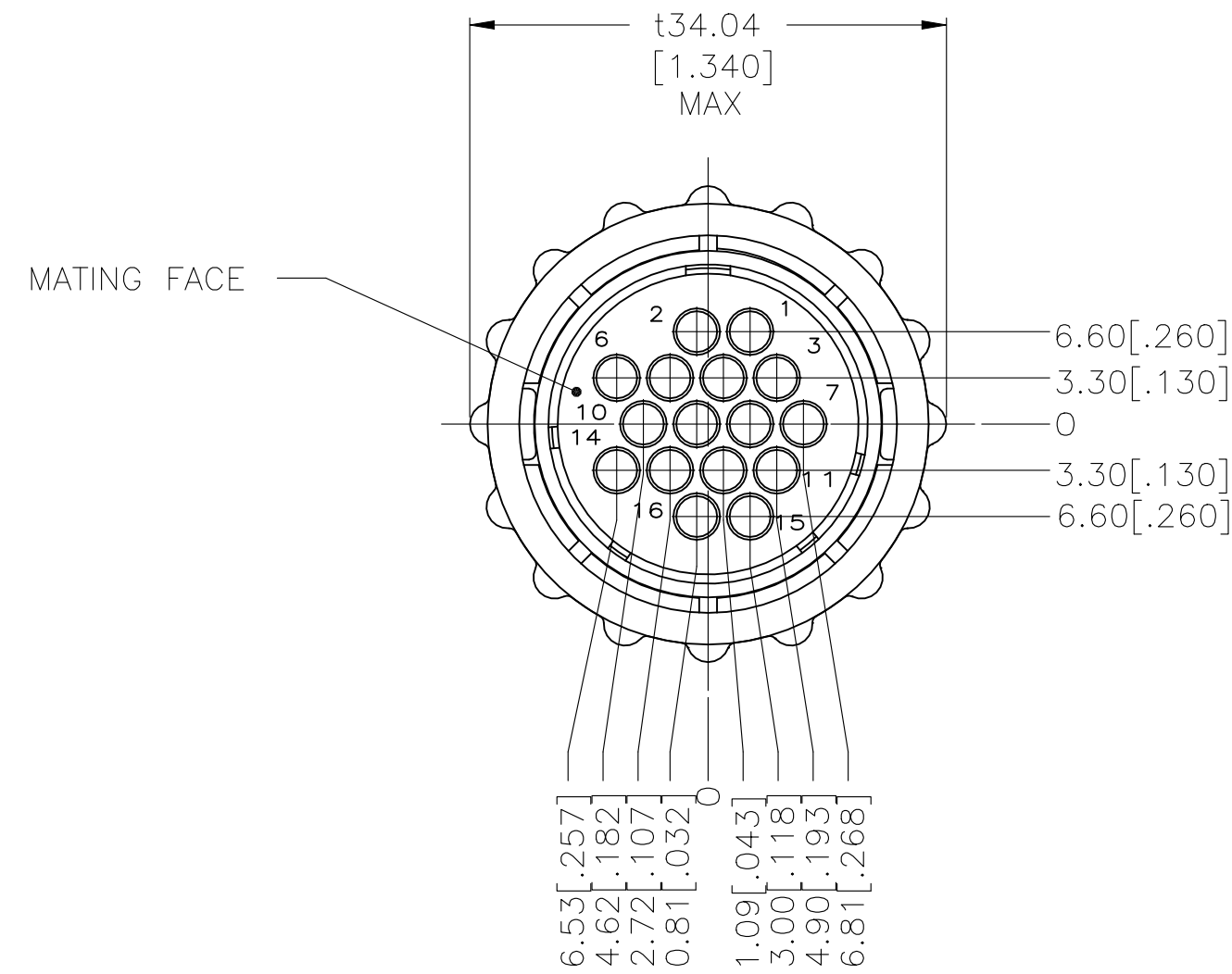
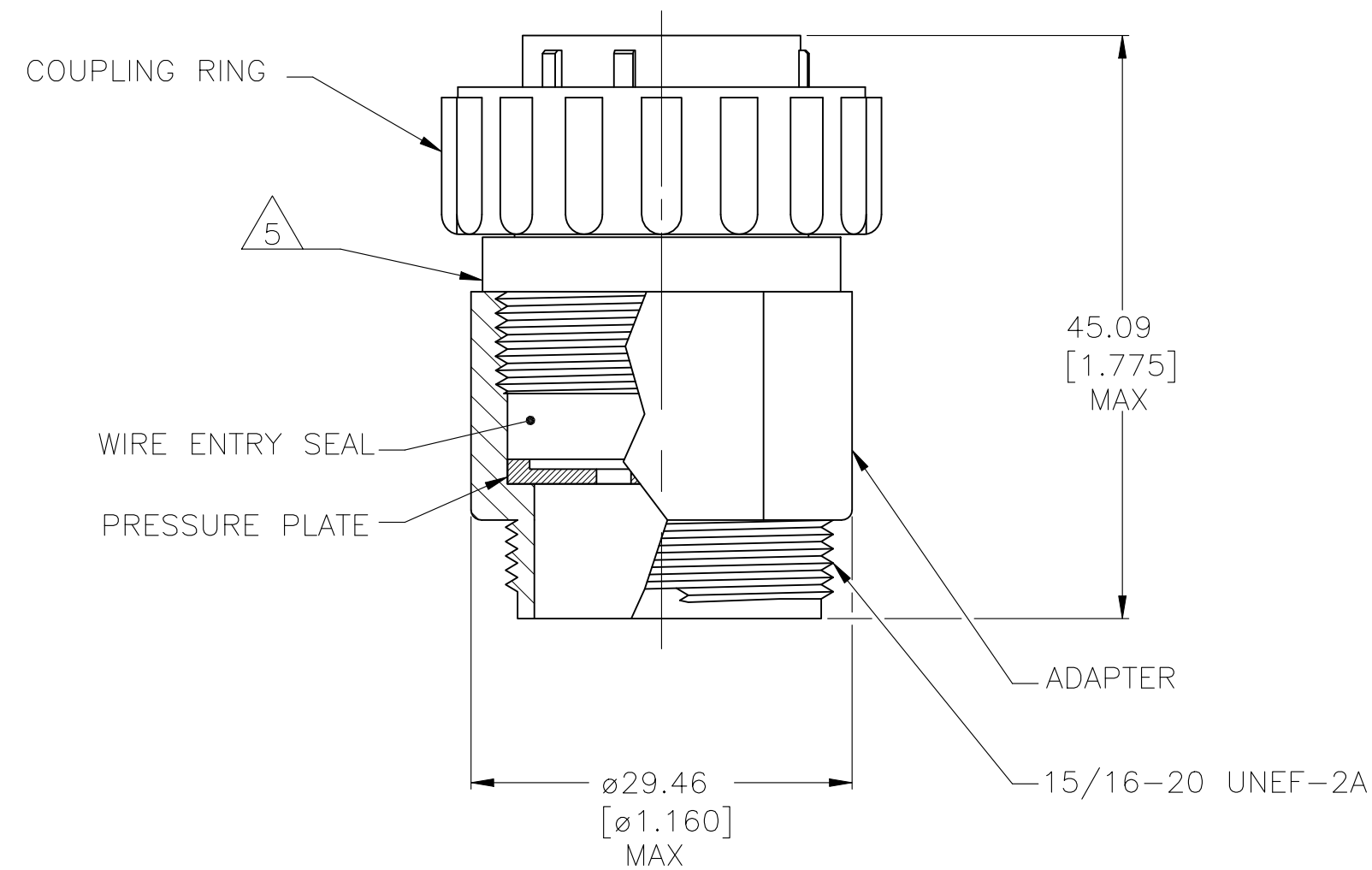


REVISIONS				
P	LTR	DESCRIPTION	DATE	APVD
G		REVISED PER ECO-21-006945	28OCT2021	RK MZ



- 1 HOUSING, ADAPTER AND PRESSURE PLATE: NYLON, BLACK.
WIRE ENTRY SEAL: ELASTOMER, SEE TABLE.
COUPLING RING: POLYPHENYLENE, BLACK.
- 2 CONNECTOR WILL ACCEPT (16) MULTIMATE SOCKET CONTACTS.
- 3 HOUSING, ADAPTOR AND COUPLING RING MATERIAL: POLYESTER, PBT.
- 4 METAL COUPLING RING.
- 5 TE LOGO AND 206037-1 PART NUMBER LOCATED ANYWHERE ON THIS SURFACE.



4	OBSOLETE	RED-IRON OXIDE	.065 - .100	STANDARD	796274-4
3	OBSOLETE	YELLOW	.040 - .080	SMALL	796274-3
1		YELLOW	.040 - .080	SMALL	796274-2
1		RED-IRON OXIDE	.065 - .100	STANDARD	796274-1
		SEAL COLOR	WIRE INSULATION DIAMETER RANGE	INSULATION	PART NUMBER

THIS DRAWING IS A CONTROLLED DOCUMENT.		DWN L. McEACHIN 27-JAN-2000		
DIMENSIONS: mm [INCHES]		CHK K. DOWHOWER 27-JAN-2000		
TOLERANCES UNLESS OTHERWISE SPECIFIED:		APVD K. DOWHOWER 27-JAN-2000	NAME ASSEMBLY, PLUG, STANDARD SEX, 17-16, STANDARD OR SMALL INSULATION DIA., SEALED	
0 PLC ± -	1 PLC ± -	PRODUCT SPEC	SIZE A2	CAGE CODE 00779
2 PLC ± -	3 PLC ± -	APPLICATION SPEC	DRAWING NO C=796274	RESTRICTED TO
4 PLC ± -	ANGLES ± -		SCALE 2:1	SHEET 1 of 1
MATERIAL	FINISH	WEIGHT	REV G	
		CUSTOMER DRAWING		