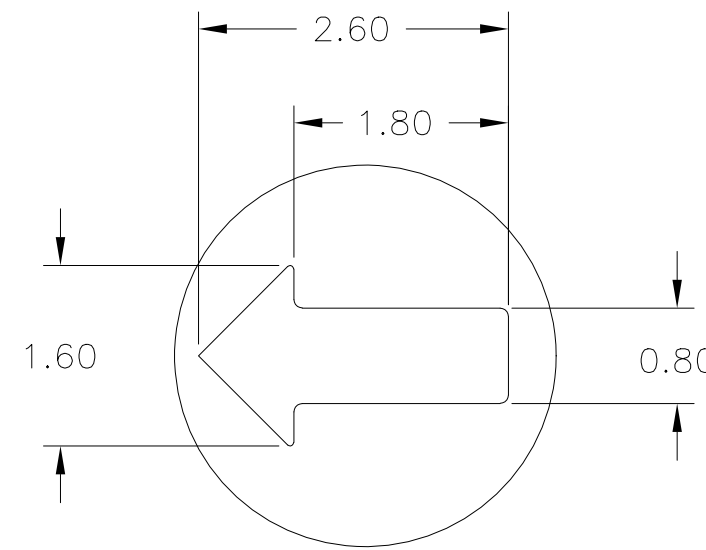
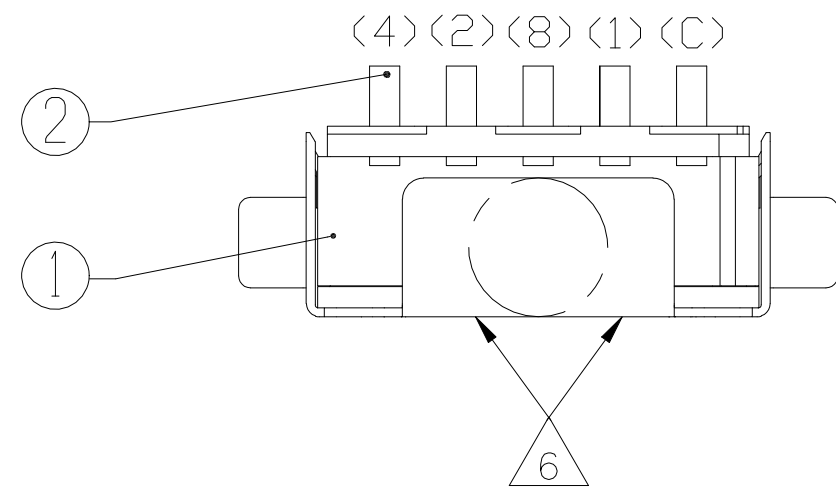
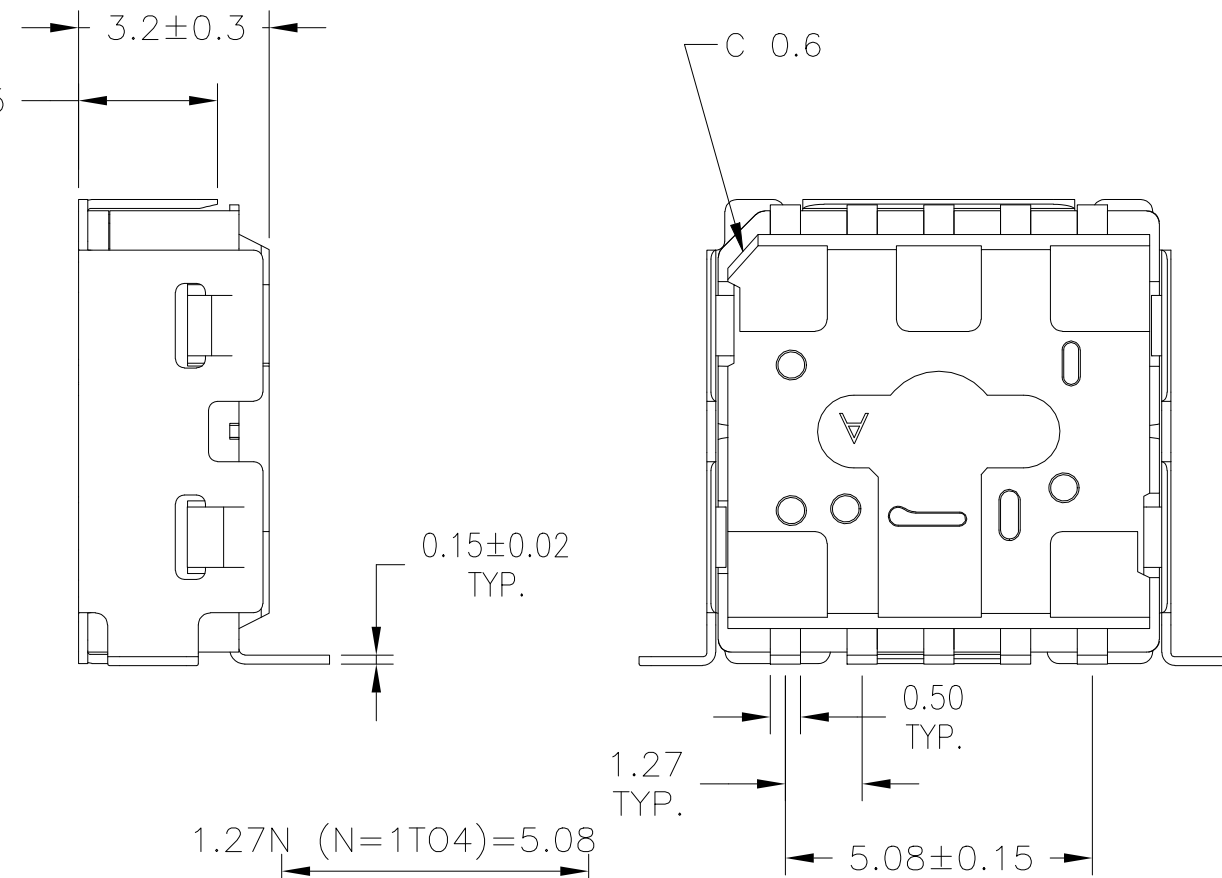
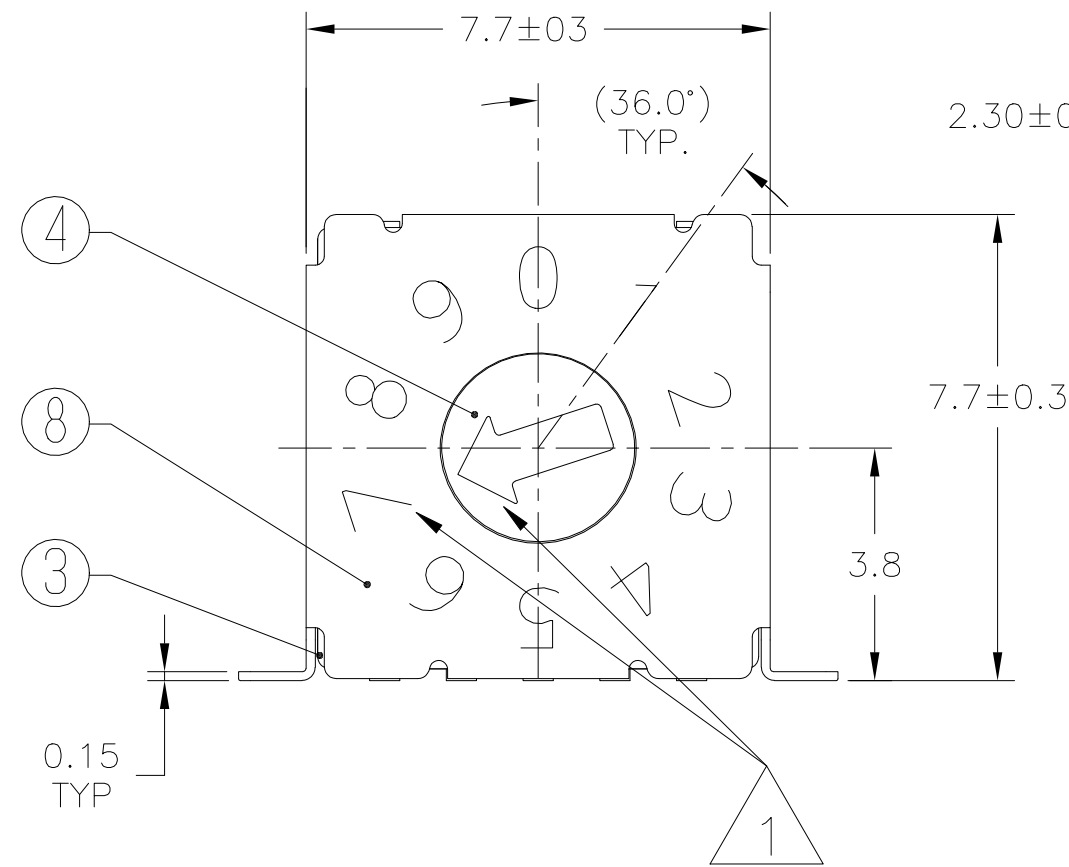


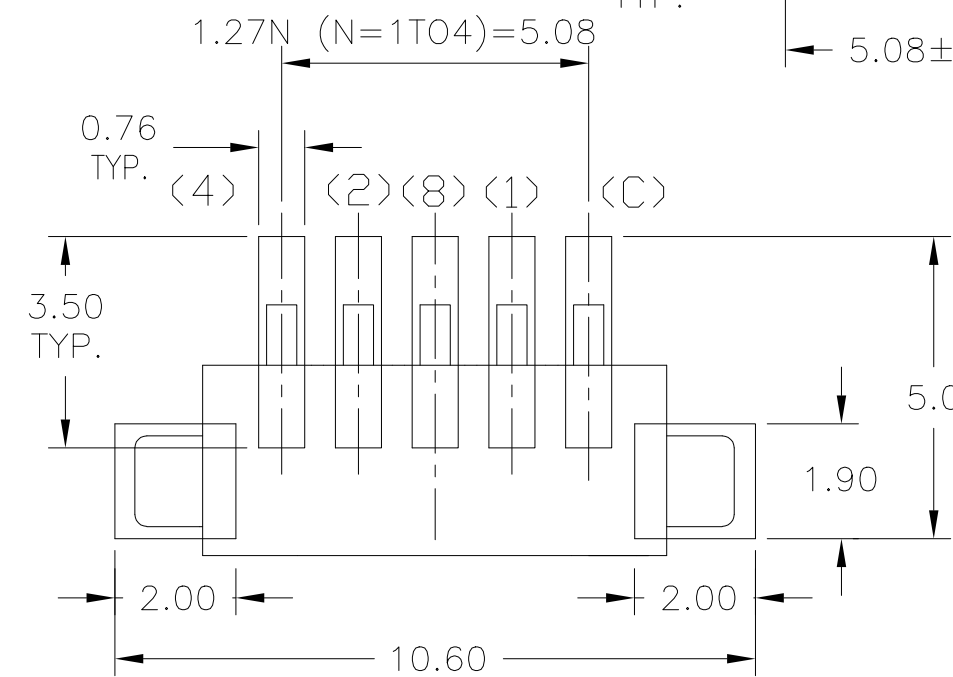
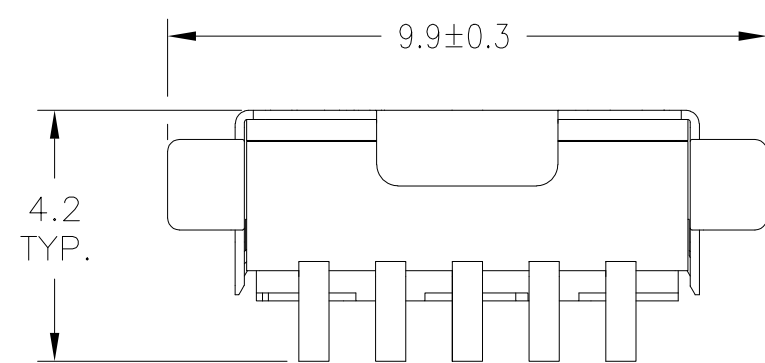
REVISIONS				
P	LTR	DESCRIPTION	DATE	APVD
1		NEW DRAWING	19JUL2022	GSK AS



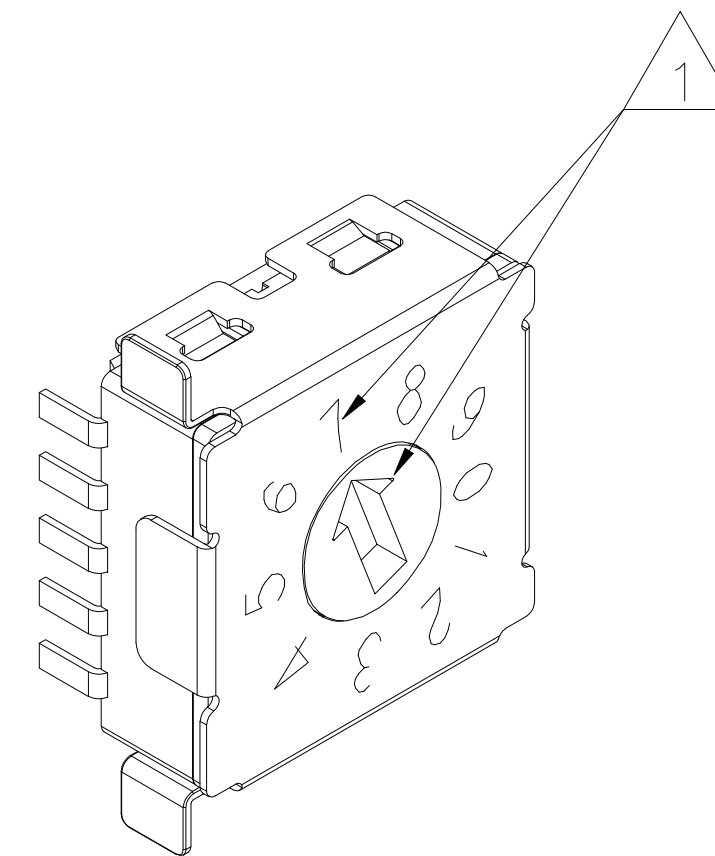
SEE SHEET 9 FOR CODE IDENTIFIER



CODE BINARY  
 (COMPLEMENT/GRAY/REAL)  
 GULLWING TERMINALS  
 BRACKET STAINLESS STEEL  
 LASER MARKING  
 10 POSITION



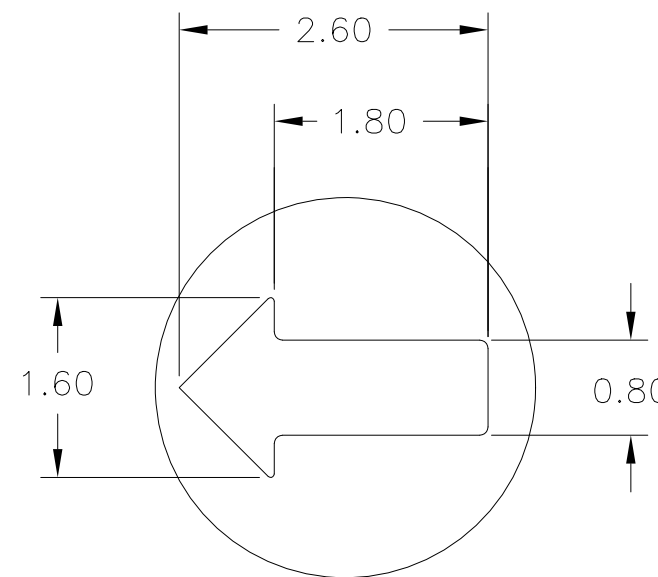
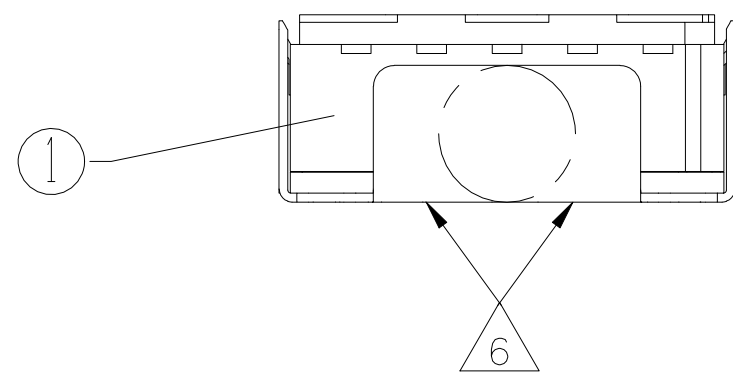
PCB Layout



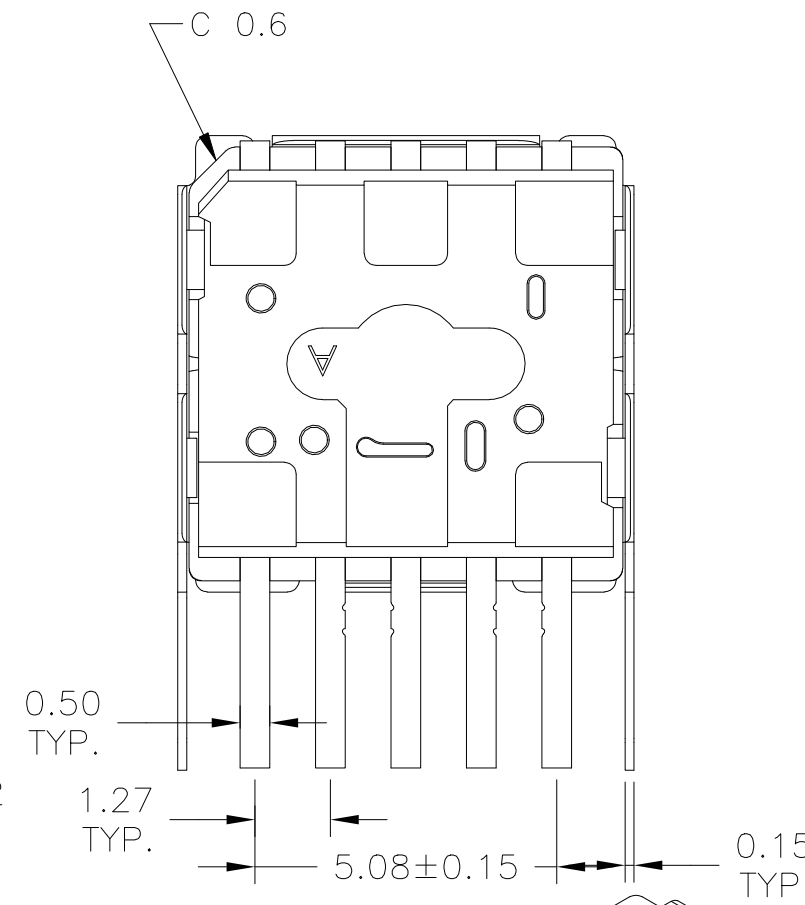
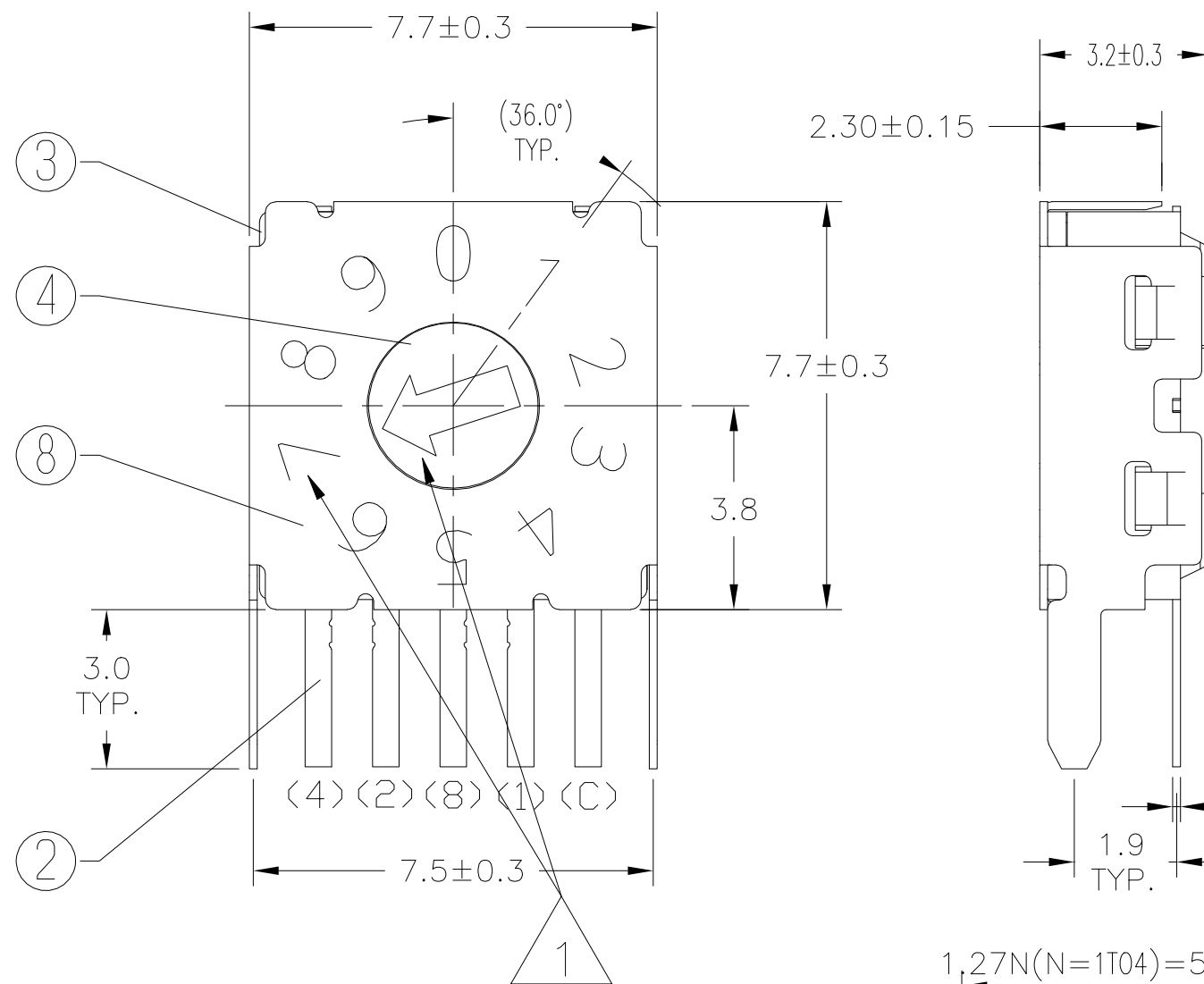
**PRELIMINARY**

THIS DRAWING IS A CONTROLLED DOCUMENT.		DWN 09AUG2021 SATHISH KUMAR_G	<b>TE</b> TE Connectivity	
DIMENSIONS: mm		CHK 09AUG2021 ALEXANDER, SHARPE		
TOLERANCES UNLESS OTHERWISE SPECIFIED: ±0.15		APVD 09AUG2021 ALEXANDER, SHARPE	NAME MRSS, MINIATURE ROTARY SWITCH SERIES,HORIZONTAL,1.27, S,STEEL, LASER MARKING	
0 PLC ± = 1 PLC ± = 2 PLC ± = 3 PLC ± = 4 PLC ± = ANGLES ± =		PRODUCT SPEC	APPLICATION SPEC	
MATERIAL		FINISH	WEIGHT	RESTRICTED TO
			A2 00779	SIZE CAGE CODE DRAWING NO
			C=2396236	SCALE NTS SHEET 1 of 9 REV 1
		CUSTOMER DRAWING		

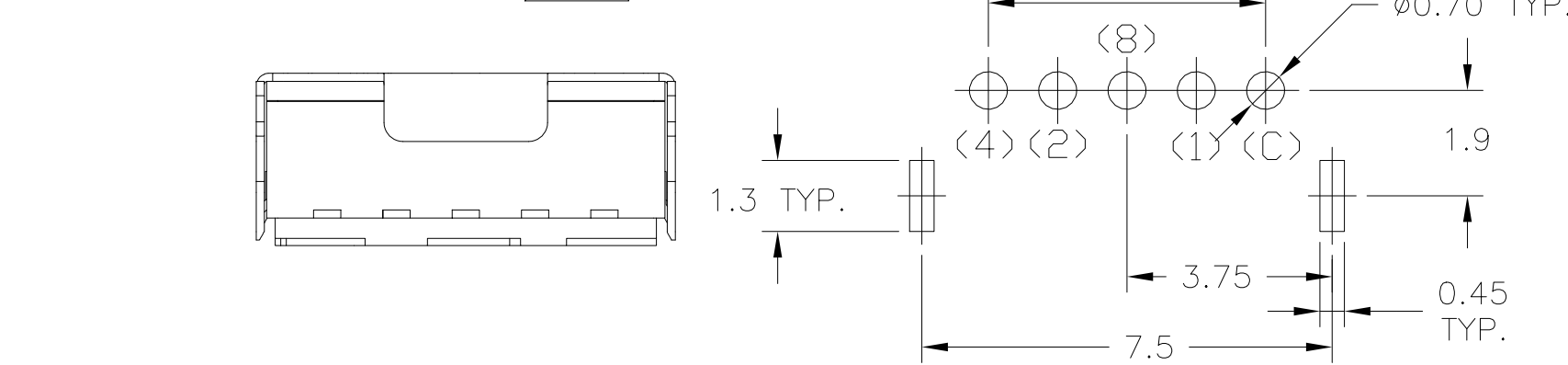
REVISIONS					
P	LTR	DESCRIPTION	DATE	DWN	APVD
-	-	SEE SHEET 1	-	-	-



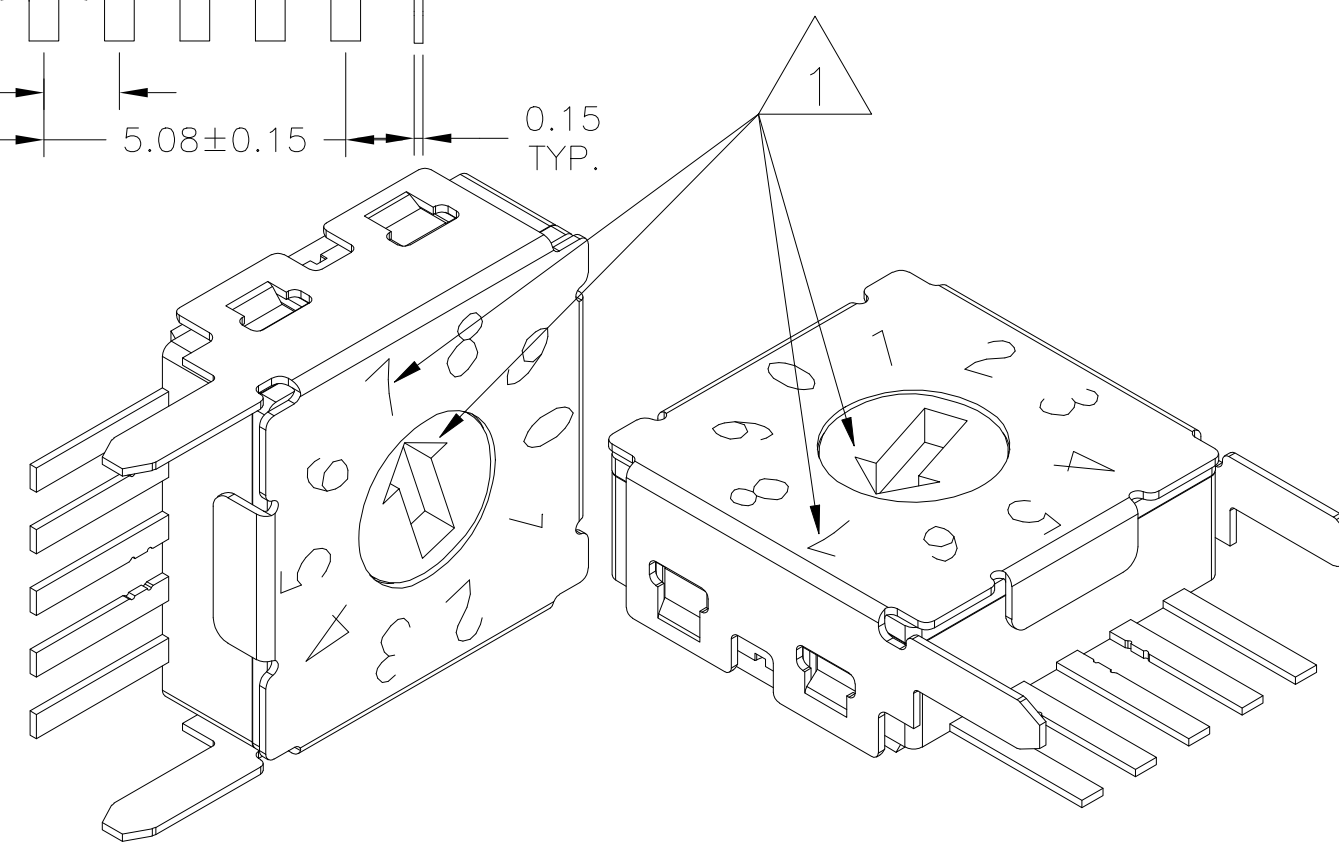
SEE SHEET 9 FOR CODE IDENTIFIER



CODE BINARY  
 (COMPLEMENT/GRAY/REAL)  
 THROUGH-HOLE TERMINALS  
 BRACKET STAINLESS STEEL  
 LASER MARKING  
 10 POSITION



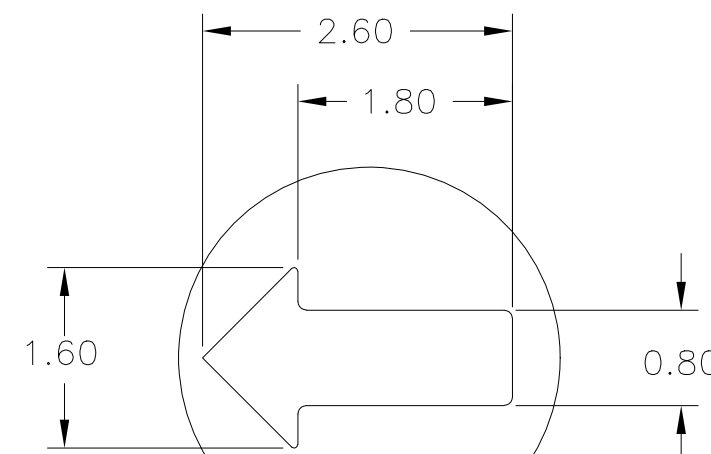
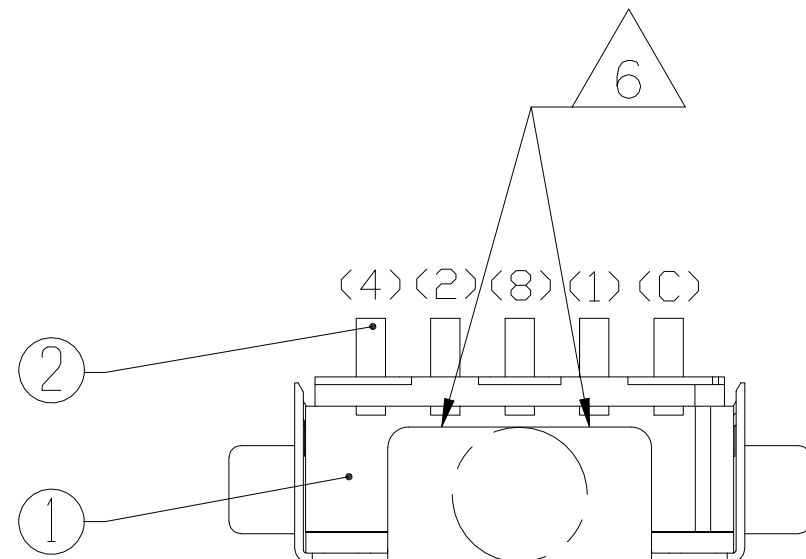
PCB Layout



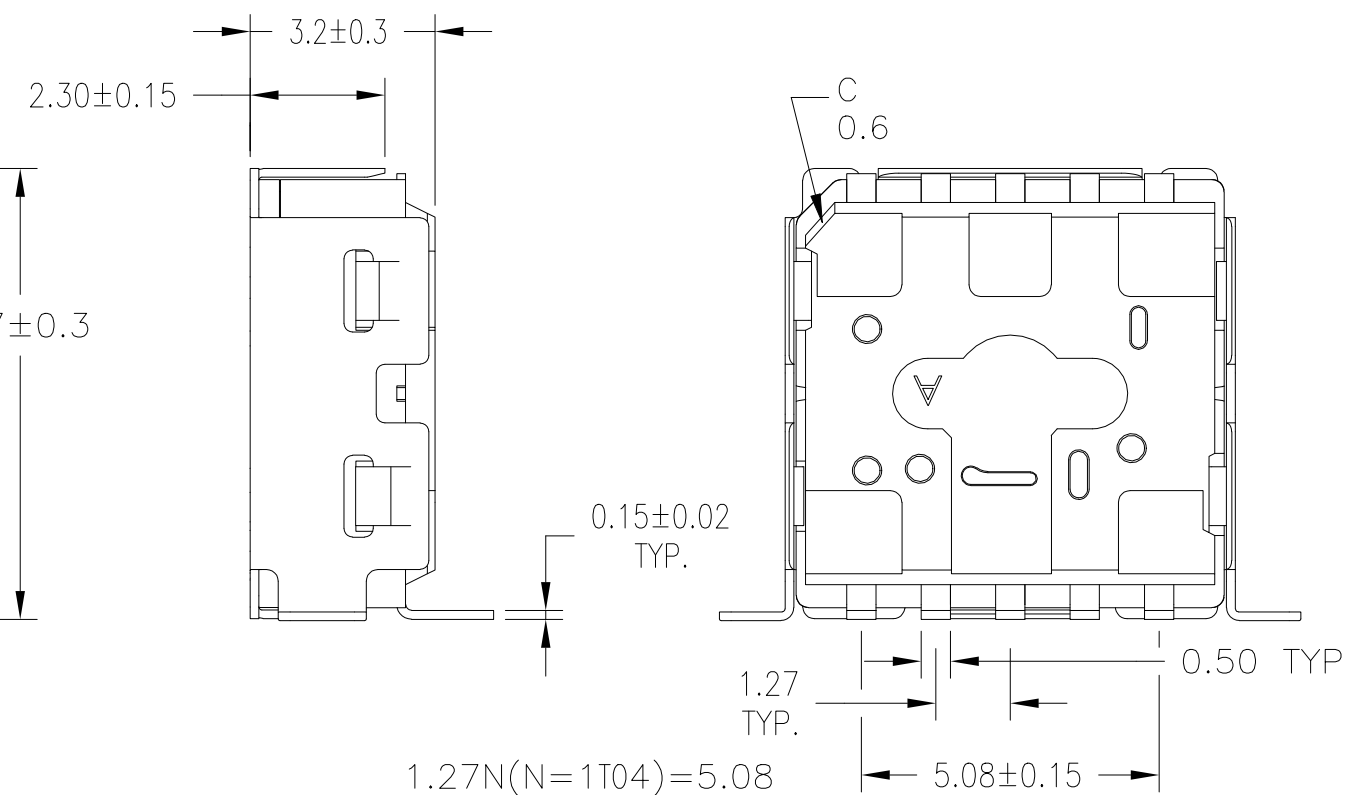
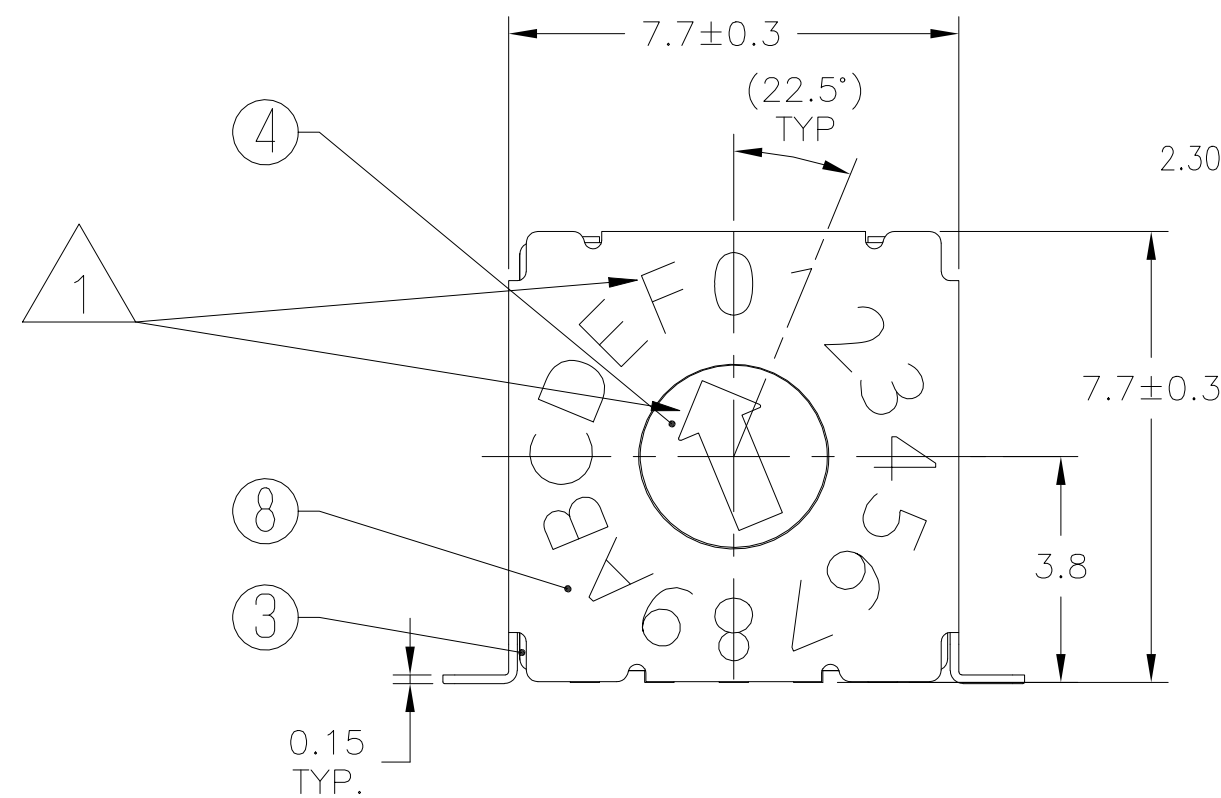
**PRELIMINARY**

THIS DRAWING IS A CONTROLLED DOCUMENT.		DWN SATHISH KUMAR_G 09AUG2021		
DIMENSIONS: mm		CHK ALEXANDER, SHARPE 09AUG2021		
TOLERANCES UNLESS OTHERWISE SPECIFIED: ±0.15		APVD ALEXANDER, SHARPE 09AUG2021	NAME MRSS, MINIATURE ROTARY SWITCH SERIES,HORIZONTAL,1.27, S,STEEL, LASER MARKING	
		PRODUCT SPEC	APPLICATION SPEC	
MATERIAL		FINISH	WEIGHT	RESTRICTED TO
-		-	-	SIZE A2
-		-	-	CAGE CODE 00779
-		-	-	DRAWING NO C=2396236
-		-	-	SCALE NTS
-		-	-	SHEET 2 of 9
-		-	-	REV 1
CUSTOMER DRAWING				

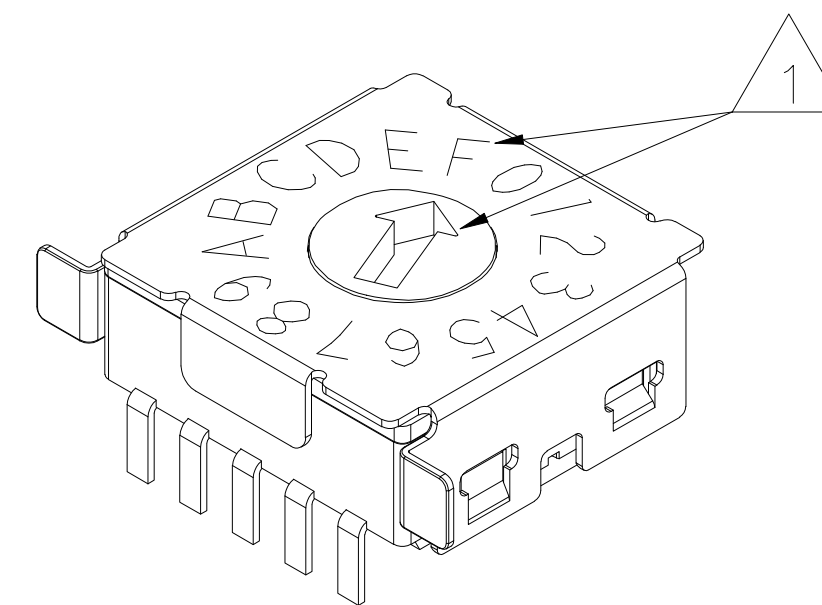
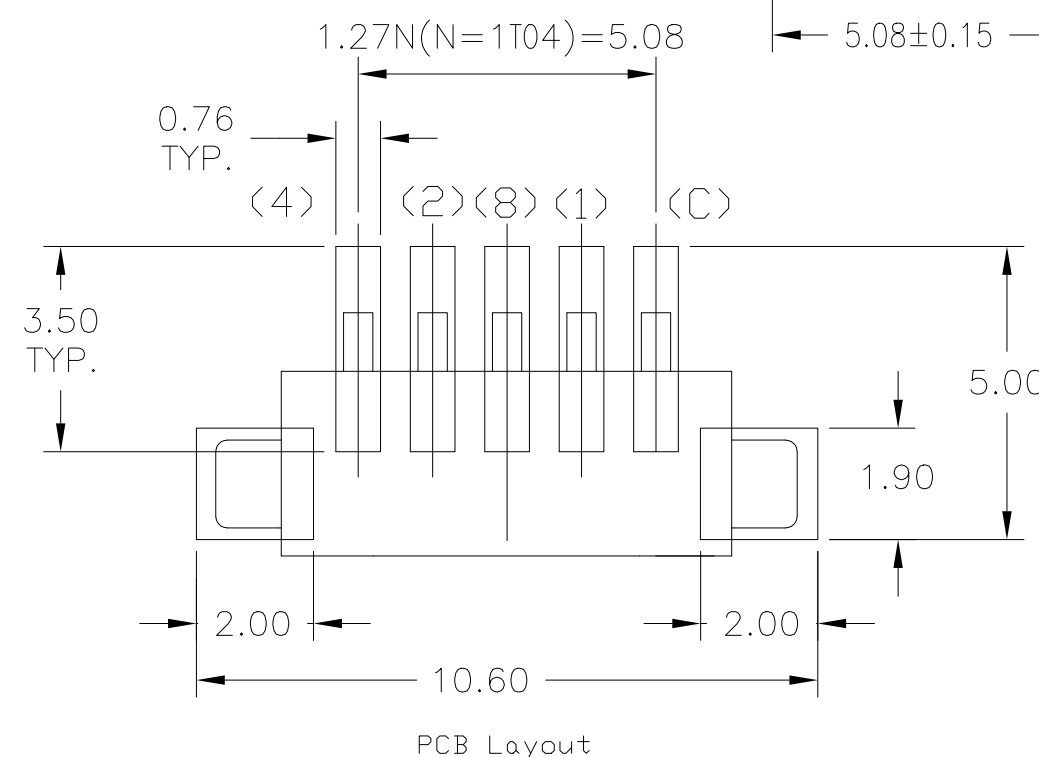
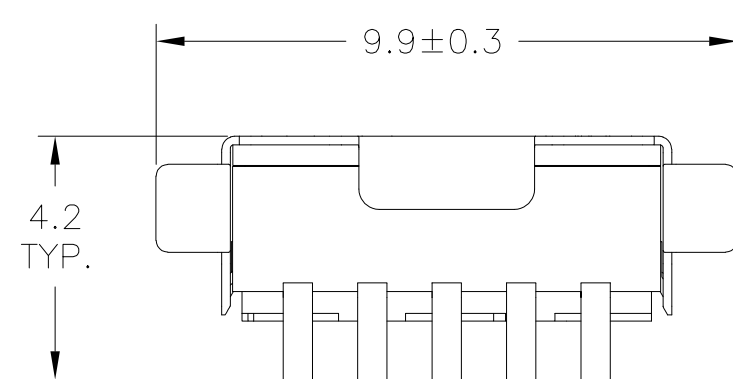
REVISIONS					
P	LTR	DESCRIPTION	DATE	DWN	APVD
-	-	SEE SHEET 1	-	-	-



SEE SHEET 9 FOR CODE IDENTIFIER



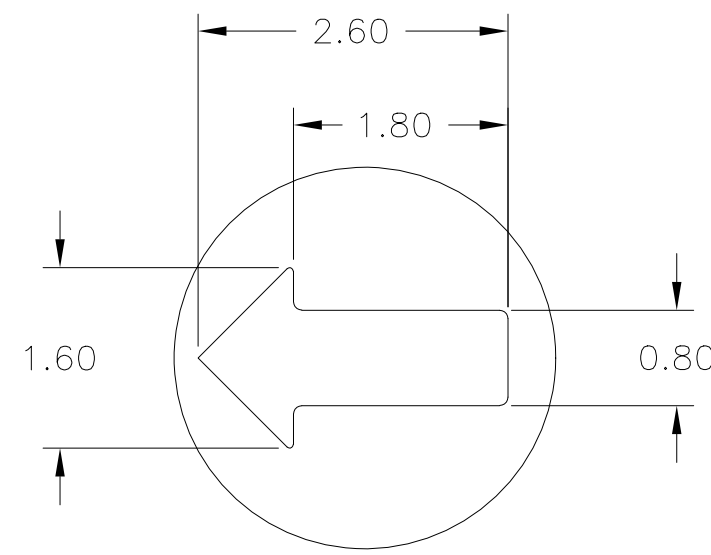
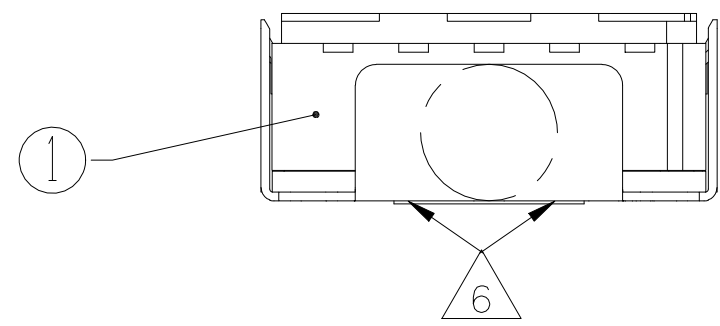
CODE HEXADECIMAL  
 (COMPLEMENT/GRAY/REAL)  
 GULLWING TERMINALS  
 BRACKET STAINLESS STEEL  
 LASER MARKING  
 16 POSITION



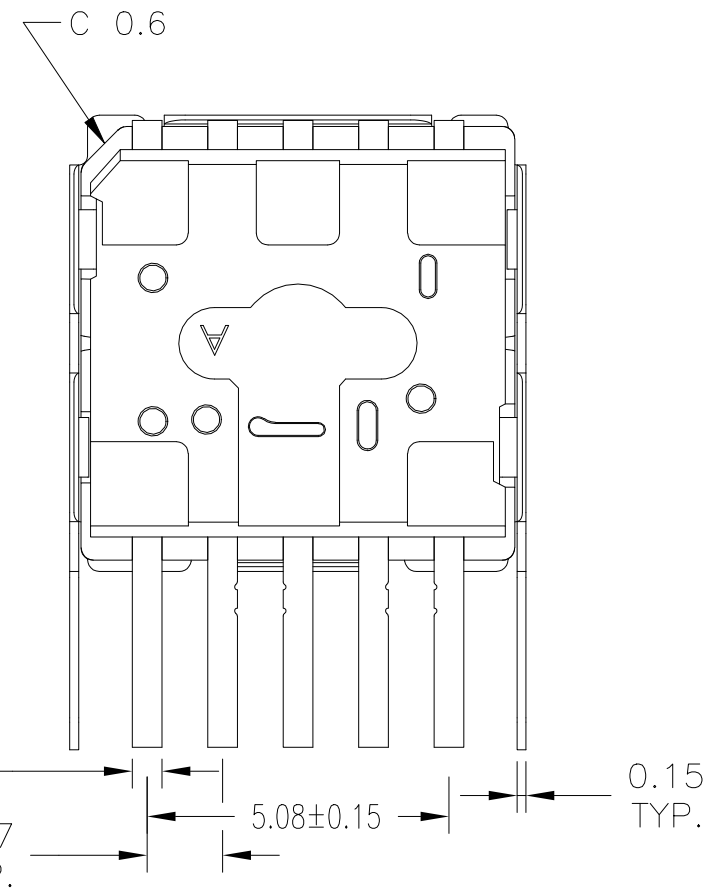
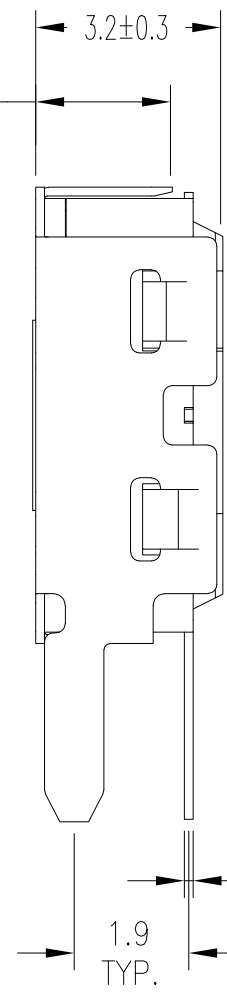
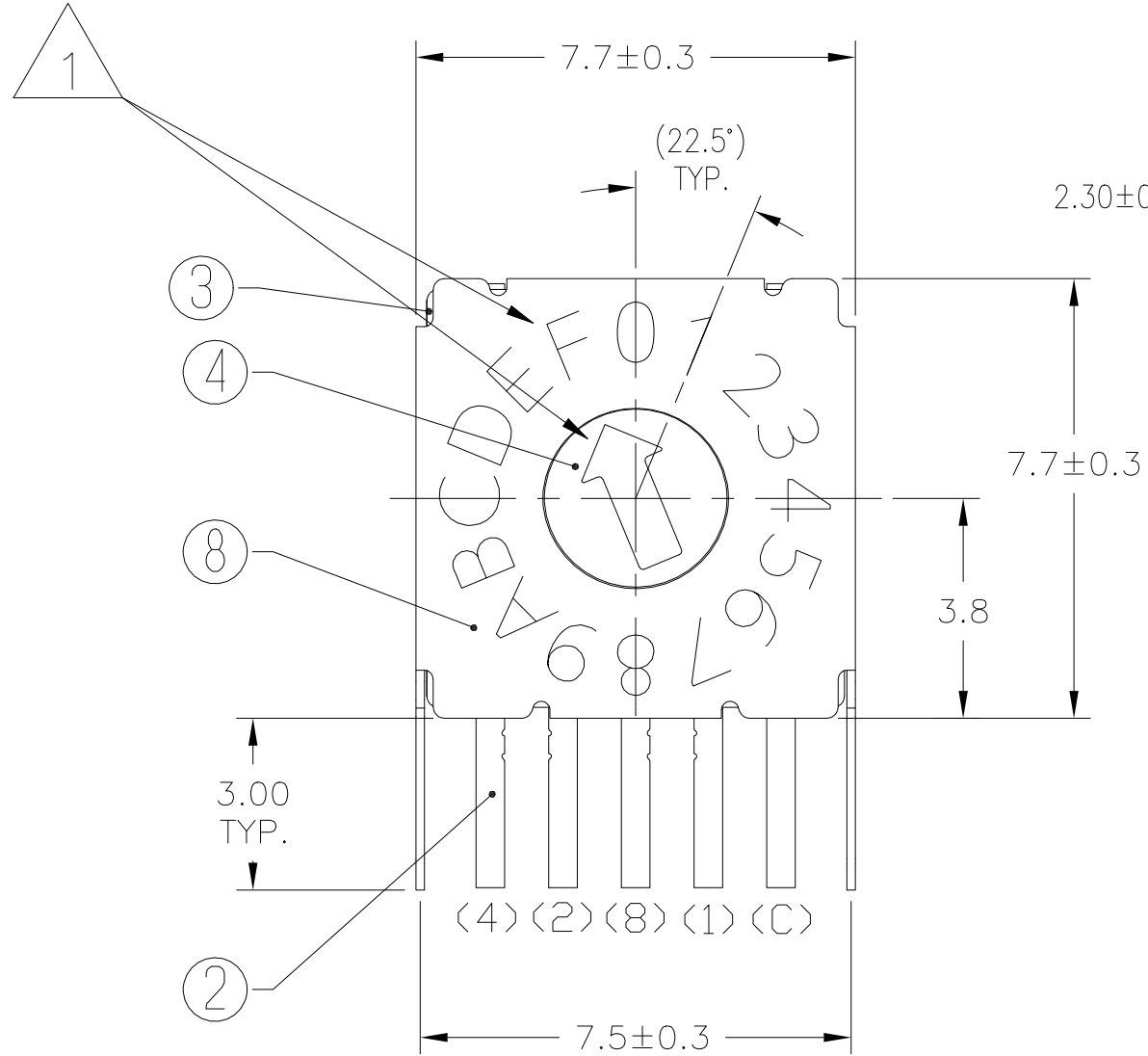
**PRELIMINARY**

THIS DRAWING IS A CONTROLLED DOCUMENT.		DWN SATHISH KUMAR_G 09AUG2021	TE Connectivity	
DIMENSIONS: mm		CHK ALEXANDER, SHARPE 09AUG2021		
TOLERANCES UNLESS OTHERWISE SPECIFIED: ±0.15		APVD ALEXANDER, SHARPE 09AUG2021	NAME MRSS, MINIATURE ROTARY SWITCH SERIES,HORIZONTAL,1.27, S,STEEL, LASER MARKING	
		PRODUCT SPEC	APPLICATION SPEC	
MATERIAL		FINISH	WEIGHT	RESTRICTED TO
-		-	-	SIZE A2
-		-	-	CAGE CODE 00779
-		-	-	DRAWING NO C=2396236
-		-	-	SCALE NTS
-		-	-	SHEET 3 of 9
-		-	-	REV 1

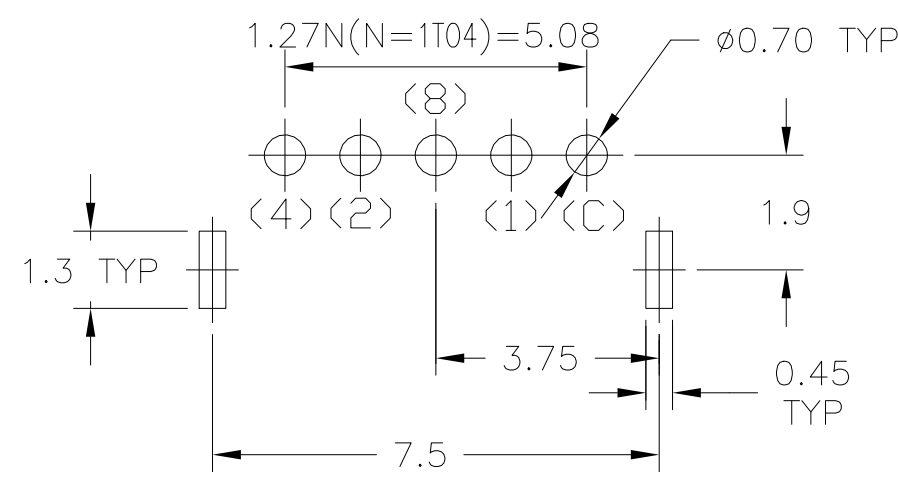
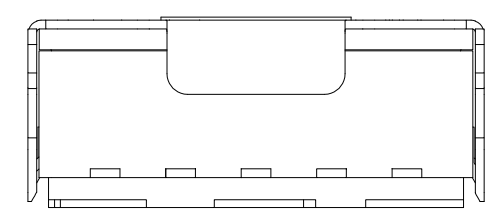
REVISIONS					
P	LTR	DESCRIPTION	DATE	DWN	APVD
-	-	SEE SHEET 1	-	-	-



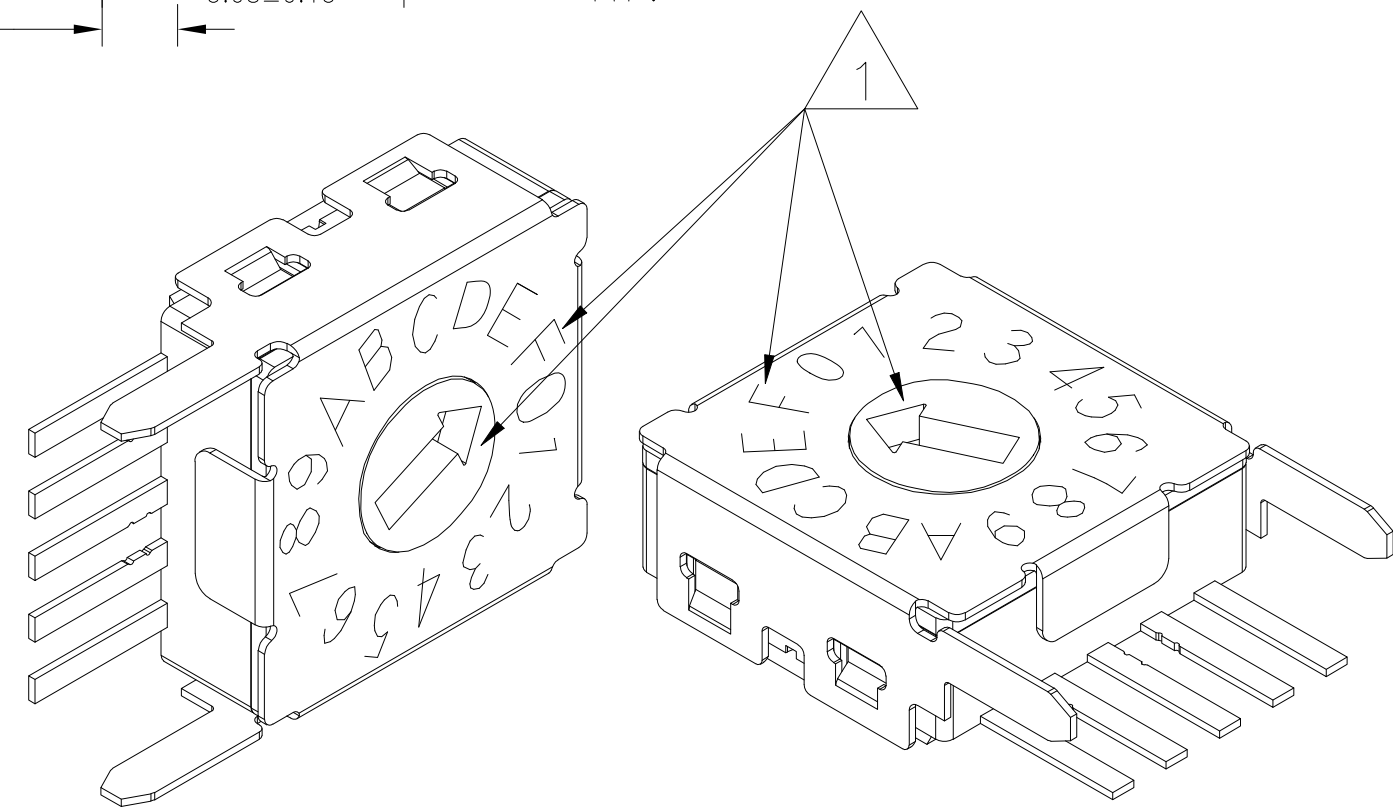
SEE SHEET 9 FOR CODE IDENTIFIER



CODE HEXADECIMAL  
 (COMPLEMENT/GRAY/REAL)  
 THROUGH-HOLE TERMINALS  
 BRACKET STAINLESS STEEL  
 LASER MARKING  
 16 POSITION



PCB Layout



**PRELIMINARY**

THIS DRAWING IS A CONTROLLED DOCUMENT.		DWN SATHISH KUMAR G 09AUG2021	<b>TE</b> TE Connectivity	
DIMENSIONS: mm		CHK ALEXANDER, SHARPE 09AUG2021		
TOLERANCES UNLESS OTHERWISE SPECIFIED: ±0.15		APVD ALEXANDER, SHARPE 09AUG2021	NAME MRSS, MINIATURE ROTARY SWITCH SERIES,HORIZONTAL,1.27, S,STEEL, LASER MARKING	
0 PLC ± = 1 PLC ± = 2 PLC ± = 3 PLC ± = 4 PLC ± = ANGLES ± =		PRODUCT SPEC	APPLICATION SPEC	
MATERIAL		FINISH	WEIGHT	RESTRICTED TO
			A2 00779 C=2396236	SCALE NTS SHEET 4 of 9 REV 1
		CUSTOMER DRAWING		

REVISIONS					
P	LTR	DESCRIPTION	DATE	DWN	APVD
-	-	SEE SHEET 1	-	-	-

10 POSITION, BINARY COMPLEMENT										
POS	0	1	2	3	4	5	6	7	8	9
C	X	X	X	X	X	X	X	X	X	X
1	X		X		X		X		X	
2	X	X			X	X			X	X
4	X	X	X	X					X	X
8	X	X	X	X	X	X	X	X		

16 POSITION, HEXADECIMAL COMPLEMENT																
POS	0	1	2	3	4	5	6	7	8	9	A	B	C	D	E	F
C	X	X	X	X	X	X	X	X	X	X	X	X	X	X	X	X
1	X		X		X		X		X		X		X		X	
2	X	X			X	X			X	X			X	X		
4	X	X	X	X					X	X	X	X				
8	X	X	X	X	X	X	X	X								

10 POSITION, BINARY GRAY										
POS	0	1	2	3	4	5	6	7	8	9
C	X	X	X	X	X	X	X	X	X	X
1		X	X			X	X			X
2			X	X	X	X				
4					X	X	X	X	X	X
8									X	X

16 POSITION, HEXADECIMAL GRAY																
POS	0	1	2	3	4	5	6	7	8	9	A	B	C	D	E	F
C	X	X	X	X	X	X	X	X	X	X	X	X	X	X	X	X
1		X	X			X	X			X	X		X	X		
2			X	X	X	X				X	X	X	X			
4					X	X	X	X	X	X	X					
8									X	X	X	X	X	X	X	X

10 POSITION, BINARY REAL										
POS	0	1	2	3	4	5	6	7	8	9
C	X	X	X	X	X	X	X	X	X	X
1		X		X		X		X		X
2			X	X			X	X		
4					X	X	X	X		
8									X	X

16 POSITION, HEXADECIMAL REAL																
POS	0	1	2	3	4	5	6	7	8	9	A	B	C	D	E	F
C	X	X	X	X	X	X	X	X	X	X	X	X	X	X	X	X
1		X		X		X		X		X		X		X		X
2			X	X			X	X			X	X			X	X
4					X	X	X	X	X	X			X	X	X	X
8									X	X	X	X	X	X	X	X

LEGEND

TE SMART PART NUMBER

MRSS

ACTUATOR ORIENTATION

V=VERTICAL  
H=HORIZONTAL

CONFIGURATION/PITCH/COVER COLOR OR BRACKET/MARKING:

0=DIP/2.54/GRAY/LASER, SEE TE DRAWING 2396233  
1=DIP/2.54/BLACK/PRINTED, SEE TE DRAWING 2396234  
4=SIP/1.27/STAINLESS STEEL/LASER,

ACTUATOR TYPE

D=SCREWDRIVER SLOT, FLUSH

CODE

C=COMPLEMENT  
G=GRAY  
R=REAL

POSITIONS

10  
16

TERMINATION TYPE

SM =SURFACE MOUNT  
TH =THROUGH-HOLE

SOLDER TERMINAL CONFIGURATION:

J = J-LEAD  
GW=GULLWING  
BLANK=THROUGH-HOLE

PACKAGING:

T = TUBE  
TR=TAPE AND REEL

SCREWDRIVER SLOT, FLUSH	O	HEXADECIMAL REAL	16	THROUGH-HOLE	TUBE	MRSSH4DR16THT	1-2396236-8
				GULLWING	TUBE	MRSSH4DR16SMGWT	1-2396236-7
		BINARY REAL	10	THROUGH-HOLE	TUBE	MRSSH4DR10THT	1-2396236-5
				GULLWING	TUBE	MRSSH4DR10SMGWT	1-2396236-4
		HEXADECIMAL GRAY	16	THROUGH-HOLE	TUBE	MRSSH4DG16THT	1-2396236-2
				GULLWING	TUBE	MRSSH4DG16SMGWT	1-2396236-1
	BINARY GRAY	10	THROUGH-HOLE	TUBE	MRSSH4DG10THT	2396236-9	
			GULLWING	TUBE	MRSSH4DG10SMGWT	2396236-8	
	F	HEXADECIMAL COMPLEMENT	16	THROUGH-HOLE	TUBE	MRSSH4DC16THT	2396236-6
				GULLWING	TUBE	MRSSH4DC16SMGWT	2396236-5
		BINARY COMPLEMENT	10	THROUGH-HOLE	TUBE	MRSSH4DC10THT	2396236-3
				GULLWING	TUBE	MRSSH4DC10SMGWT	2396236-2
				TAPE & REEL	MRSSH4DC16SMGWTR	2396236-4	
				TAPE & REEL	MRSSH4DC10SMGWTR	2396236-1	

ACTUATION	ACTUATOR POSITION	CODE	POSITIONS	SOLDER TERMINAL CONFIGURATION	PACKAGING	TE SMART PART NUMBER	TE PART NUMBER
THIS DRAWING IS A CONTROLLED DOCUMENT.				DWN 09AUG2021 SATHISH KUMAR_G		TE Connectivity	
DIMENSIONS: mm		TOLERANCES UNLESS OTHERWISE SPECIFIED:		CHK 09AUG2021 ALEXANDER, SHARPE		NAME MRSS, MINIATURE ROTARY SWITCH SERIES,HORIZONTAL,1.27, S,STEEL, LASER MARKING	
		0 PLC ± = 1 PLC ± = 2 PLC ± = 3 PLC ± = 4 PLC ± =		APVD 09AUG2021 ALEXANDER, SHARPE		SIZE CAGE CODE DRAWING NO A2 00779 C=2396236	
MATERIAL		FINISH		APPLICATION SPEC		RESTRICTED TO	
				WEIGHT		SCALE NTS SHEET 5 of 9 REV 1	
				CUSTOMER DRAWING			

PRELIMINARY

NOTES:

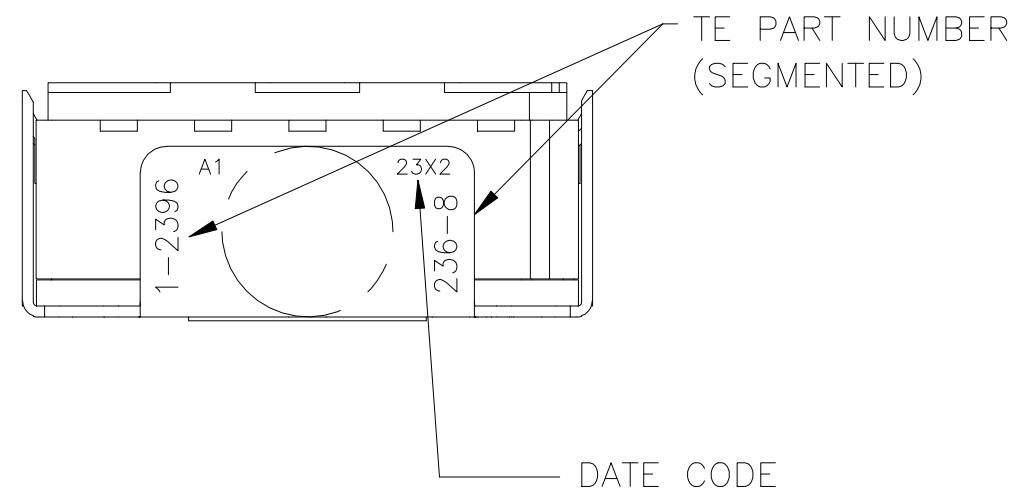
- 1 SEE TABLE, SHEET 5 OF 9 FOR ACTUATOR POSITION WHEN DELIVERED, THE SWITCH SHALL REMAIN IN THIS POSITION DURING MOUNTING/TERMINATION TO AND CLEANING OF THE P.C.BOARD.
- 2. COMPLIANCE: THE CURRENT STATEMENT OF COMPLIANCE IS AVAILABLE AT TE.COM
- 3. IF THE SWITCH IS NOT ACTUATED FOR AN EXTENDED PERIOD OF TIME, SIX MONTHS, IT MAY REQUIRE ACTUATING TO RESTORE SWITCH FUNCTION.
- 4. MSL 1 PER JIS C61760-4:2016 AND IEC 61760-4:2015
- 5. TAPE AND REEL PER EIA 481 TAPE WIDTH 24mm, PITCH 16MM, SEE SHEET 7 OF 9.

6 TE PART NUMBER AND DATE CODE

EXAMPLE OF DATE CODE= 23 X 2

YEAR=2022  
MONTH=OCTOBER  
DAY=23

- MONTH=
- 1 = JANUARY
  - 2 = FEBRUARY
  - 3 = MARCH
  - 4 = APRIL
  - 5 = MAY
  - 6 = JUNE
  - 7 = JULY
  - 8 = AUGUST
  - 9 = SEPTEMBER
  - X = OCTOBER
  - Y = NOVEMBER
  - Z = DECEMBER



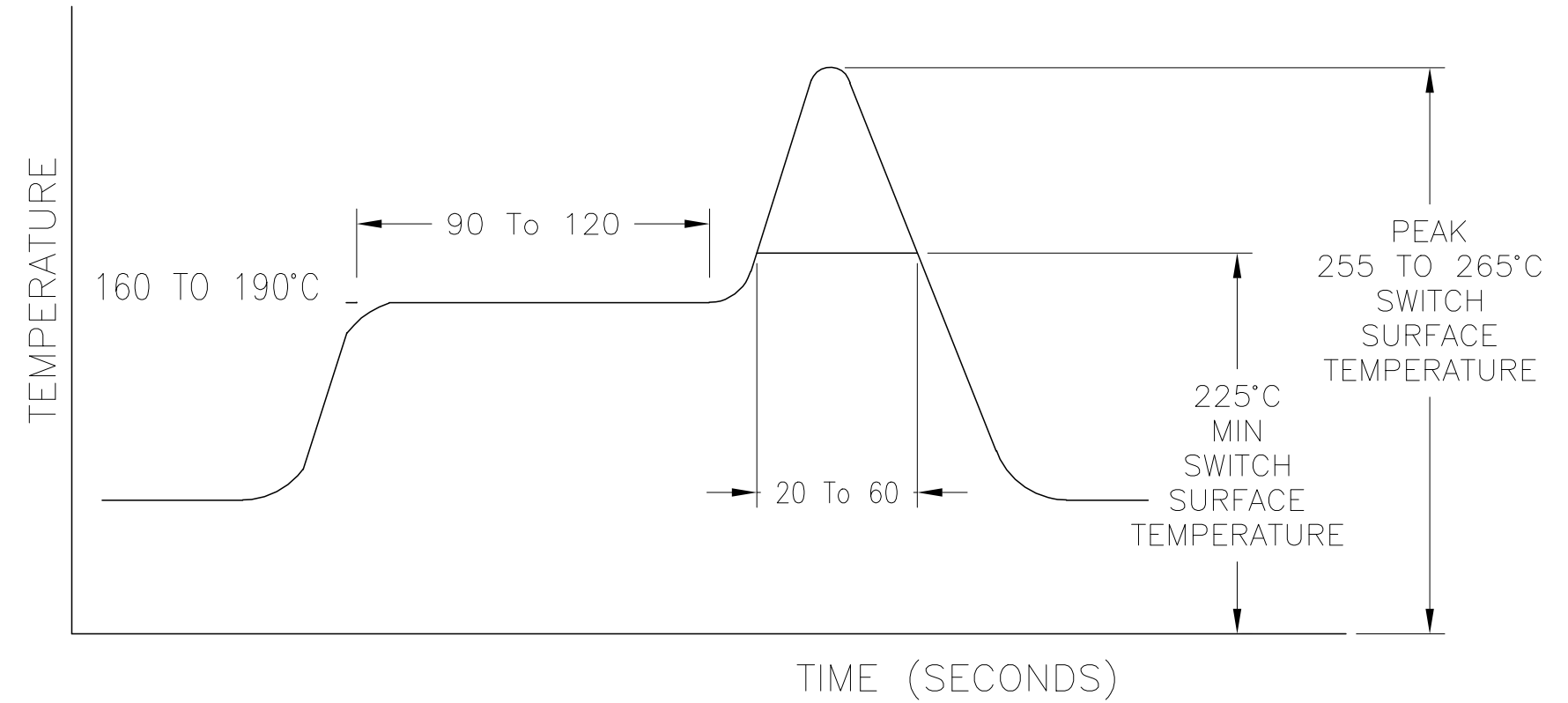
SPECIFICATIONS:

OPERATING CURRENT, 0.4VA @ 20VAC OR DC, MAXIMUM.  
 MINIMUM SWITCHING CURRENT, 0.1µA @ 1mV MINIMUM.  
 MAXIMUM SWITCHING CURRENT(DURING MAKE OR BREAK), 10mA@5VDC  
 NONE SWITCHING CURRENT 100mA@50VDC MAXIMUM  
 INITIAL CONTACT RESISTANCE, 100 MILLIOHMS MAX. @ 2V DC 10MILLIAMPS  
 CONTACT RESISTANCE AFTER TEST AND PCB TERMINATION, 300 MILLIOHMS MAX.  
 INSULATION RESISTANCE, 1,000 MEGOHMS MIN. @ 250 VDC  
 DIELECTRIC STRENGTH, 250 VAC , 1 MINUTE  
 ELECTRICAL LIFE, 10,000 ACTUATIONS MIN. @ 5V DC 10MILLIAMPS  
 MECHANICAL LIFE, 10,000 ACTUATIONS MIN. AT NO LOAD.  
 INITIAL ACTUATION TORQUE, 2.0 TO 19.6mN.m  
 TEMPERATURE RANGE, -40 TO +85°C

SOLDERING CONDITIONS

MANUAL	TEMPERATURE OF IRON TIP: 320°C MAX. FOR 4±1 SECONDS	PRINTED CIRCUIT BOARD THICKNESS 1.6
WAVE (FOR THROUGH-HOLE)	PREHEAT 100 TO 105°C FOR 30±5 SECONDS	
	SOLDER TEMPERATURE 265°C±3°C FOR 8±2 SECONDS	
REFLOW (FOR GULLWING)	PREHEAT 160 TO 190°C FOR 90 TO 120 SECONDS	
	REFLOW TEMPERATURE 225°C (SWITCH SURFACE) FOR 20 TO 60 SECONDS	
	PEAK TEMPERATURE 255 TO 265°C (SWITCH SURFACE)	
	MAXIMUM NUMBER OF EXPOSURES TO REFLOW PROCESS IS 2	

REFLOW SOLDER PROFILE FOR GULLWING TERMINALS



1	GOLD OVER NICKEL	STAINLESS STEEL	BRACKET	8
1	N/A	STAINLESS STEEL	PLATE	7
1	GOLD OVER NICKEL	COPPER ALLOY	CONTACT	6
1	N/A	FPM (FLUOROCARBON)	O-RING	5
1	WHITE	LCP	ACTUATOR	4
1	GRAY	POLYPHENYLENE SULFIDE	COVER	3
5	GOLD OVER NICKEL	BRASS	TERMINAL	2
1	BLACK	POLYPHENYLENE SULFIDE	CASE	1
QTY	FINISH/COLOR	MATERIAL	COMPONENT	ITEM

THIS DRAWING IS A CONTROLLED DOCUMENT.

DWN: 09AUG2021 SATHISH KUMAR G  
 CHK: 09AUG2021 ALEXANDER, SHARPE  
 APVD: 09AUG2021 ALEXANDER, SHARPE

TE Connectivity

NAME: MRSS, MINIATURE ROTARY SWITCH SERIES,HORIZONTAL,1.27, S,STEEL, LASER MARKING

SIZE: A2 CAGE CODE: 00779 DRAWING NO: C=2396236 RESTRICTED TO: -

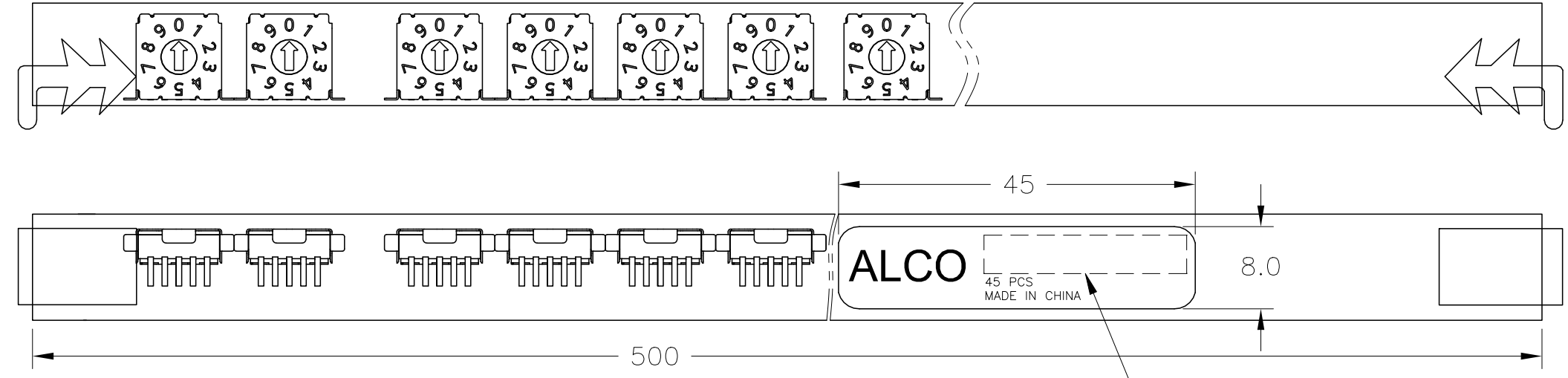
MATERIAL: - FINISH: - WEIGHT: - SCALE: NTS SHEET: 6 of 9 REV: 1

CUSTOMER DRAWING

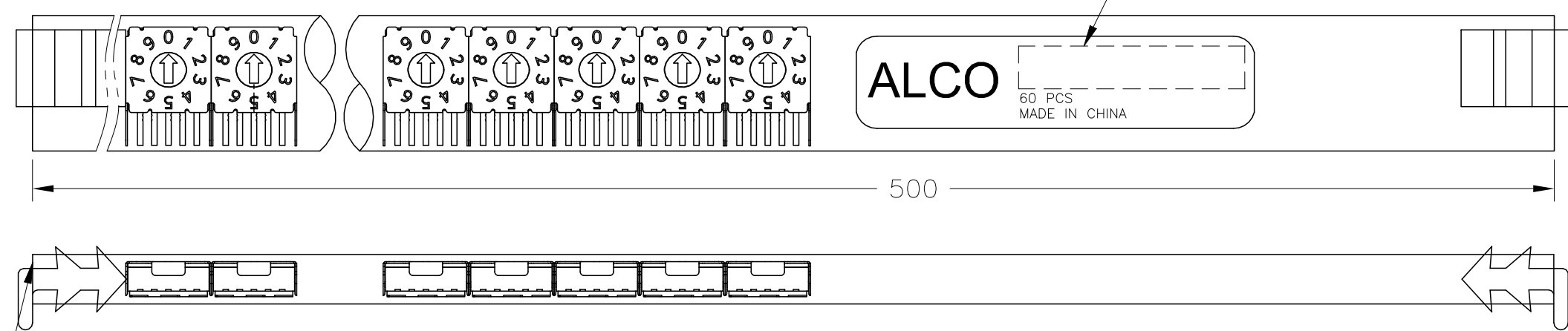
PRELIMINARY



PACKAGING SPECIFICATIONS  
TUBE FOR SMT GULLWING TERMINALS

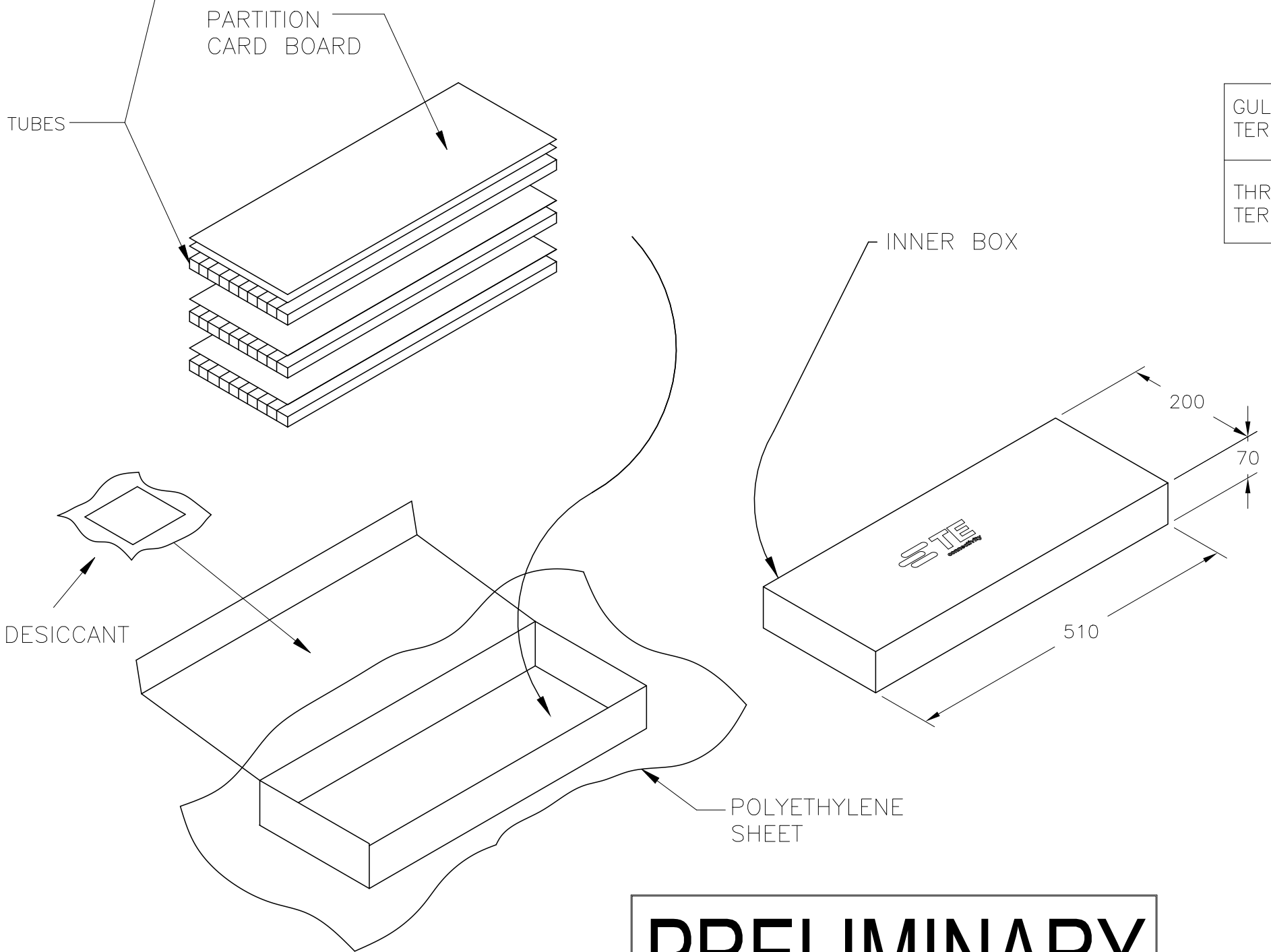
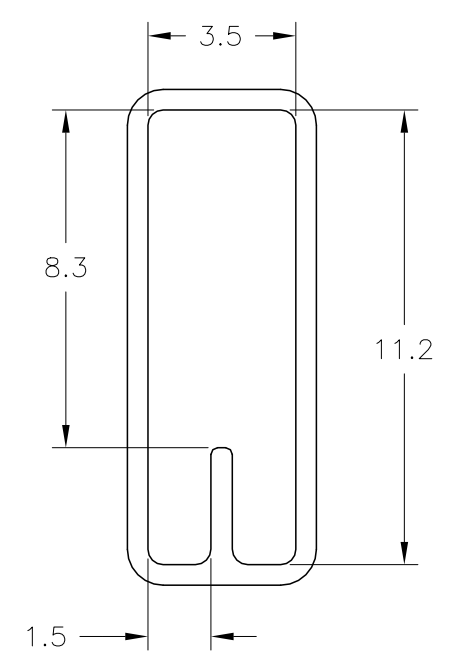
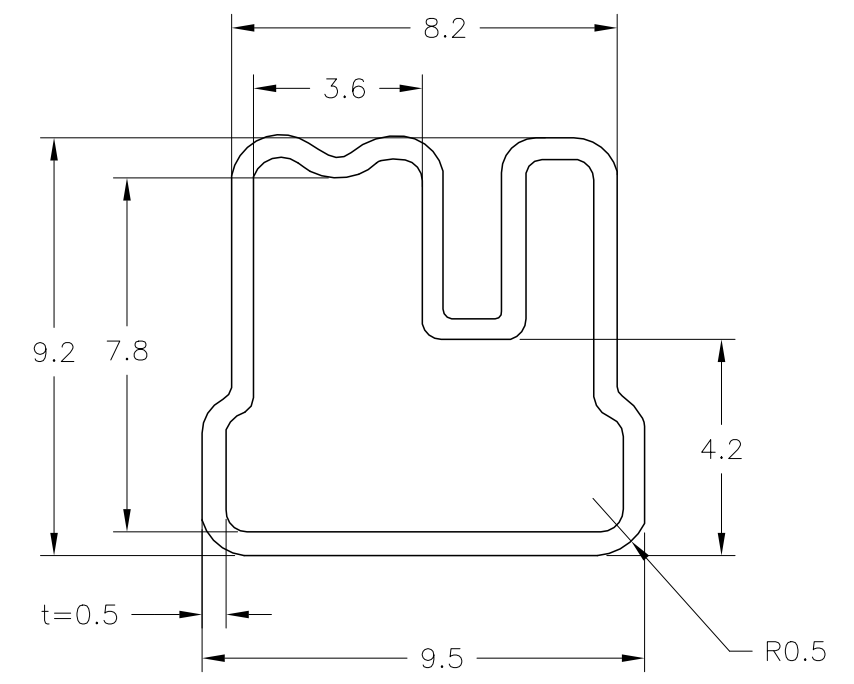


TUBE FOR THROUGH-HOLE TERMINALS

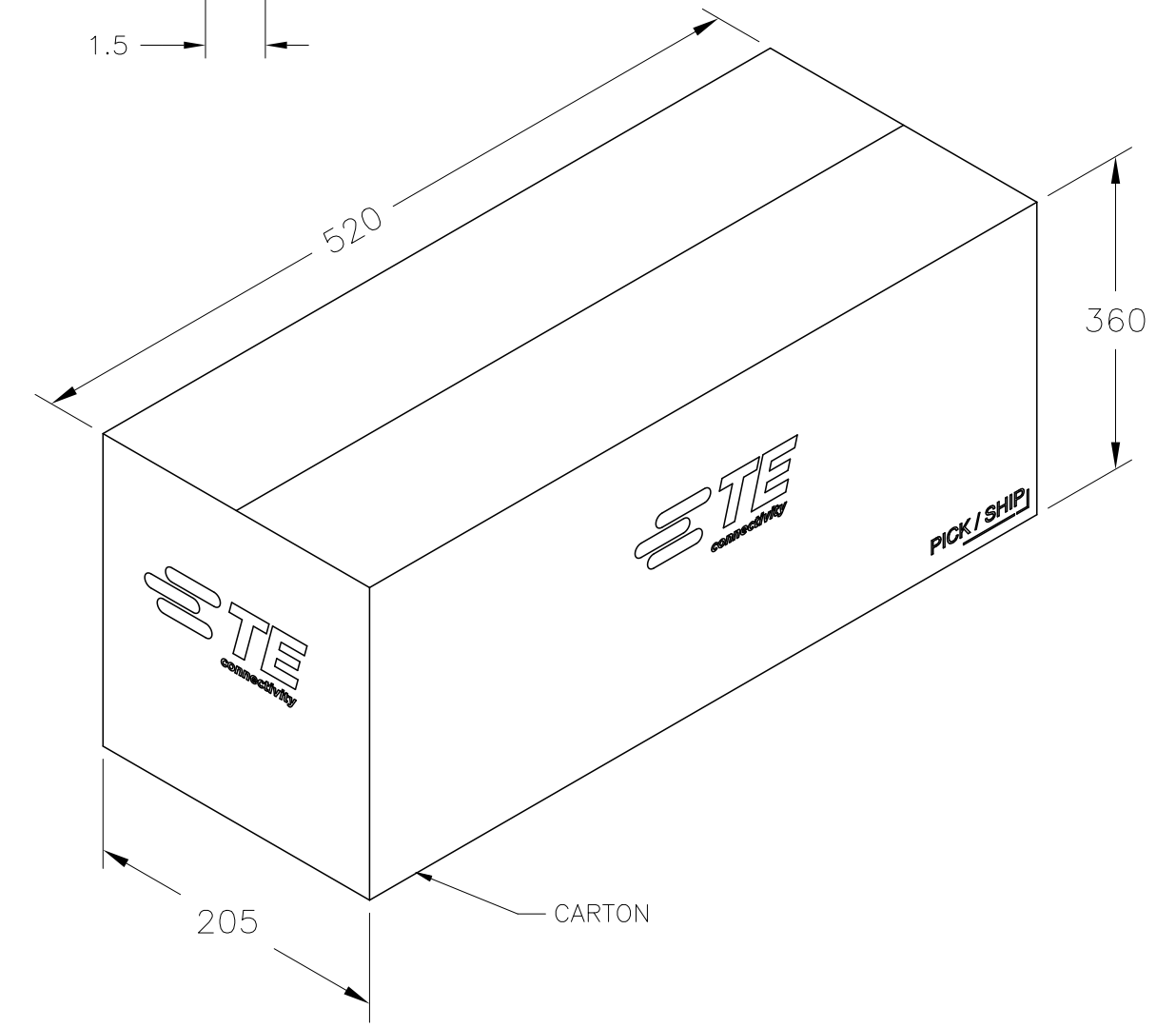


TE PART NUMBER  
SEE TABLE, SHEET 5

REVISIONS					
P	LTR	DESCRIPTION	DATE	DWN	APVD
-	-	SEE SHEET 1	-	-	-



	NUMBER OF SWITCHES PER		
	TUBE	INNER BOX	CARTON
GULLWING TERMINALS	45	2,700	13,500
THROUGH-HOLE TERMINALS	60	3,600	18,000



**PRELIMINARY**

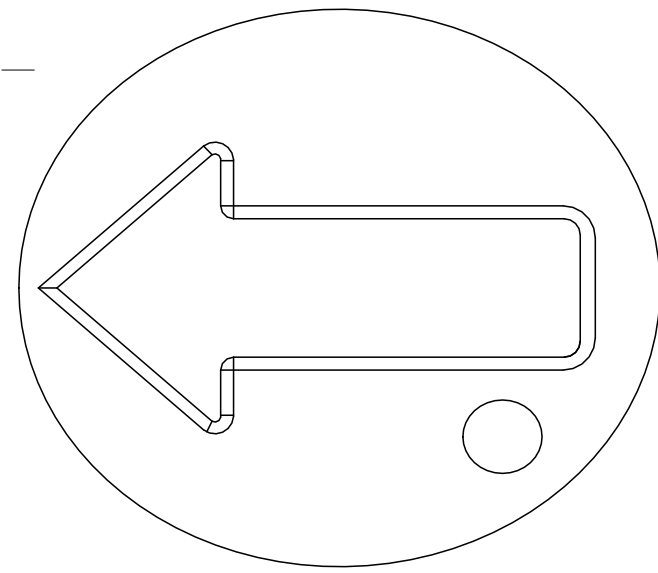
THIS DRAWING IS A CONTROLLED DOCUMENT.		DWN 09AUG2021 SATHISH KUMAR_G	TE Connectivity		
DIMENSIONS: mm		CHK 09AUG2021 ALEXANDER, SHARPE			
TOLERANCES UNLESS OTHERWISE SPECIFIED:		APVD 09AUG2021 ALEXANDER, SHARPE	NAME MRSS, MINIATURE ROTARY SWITCH SERIES,HORIZONTAL,1.27, S,STEEL, LASER MARKING		
0 PLC ± = 1 PLC ± = 2 PLC ± = 3 PLC ± = 4 PLC ± = ANGLES ± =		PRODUCT SPEC	RESTRICTED TO		
MATERIAL		APPLICATION SPEC	SIZE A2	CAGE CODE 00779	DRAWING NO. C=2396236
FINISH		WEIGHT	SCALE NTS		SHEET 8 of 9
		CUSTOMER DRAWING	REV 1		



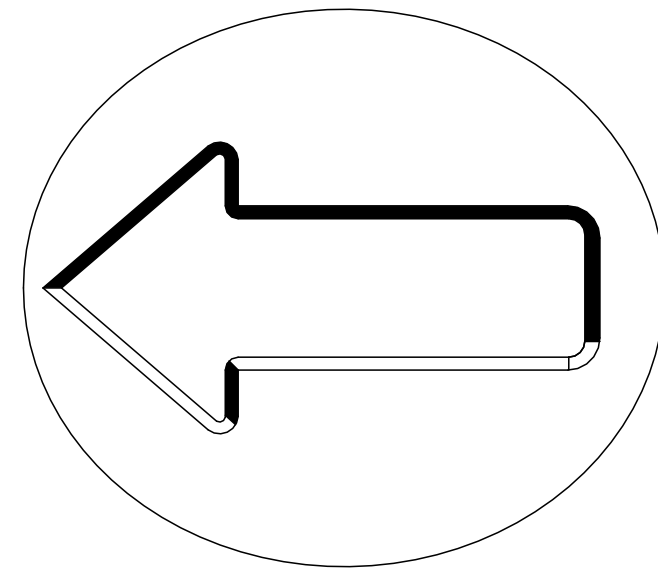
REVISIONS					
P	LTR	DESCRIPTION	DATE	DWN	APVD
-	-	SEE SHEET 1	-	-	-

CODE IDENTIFIER ON ACTUATOR

COMPLIMENT CODE-

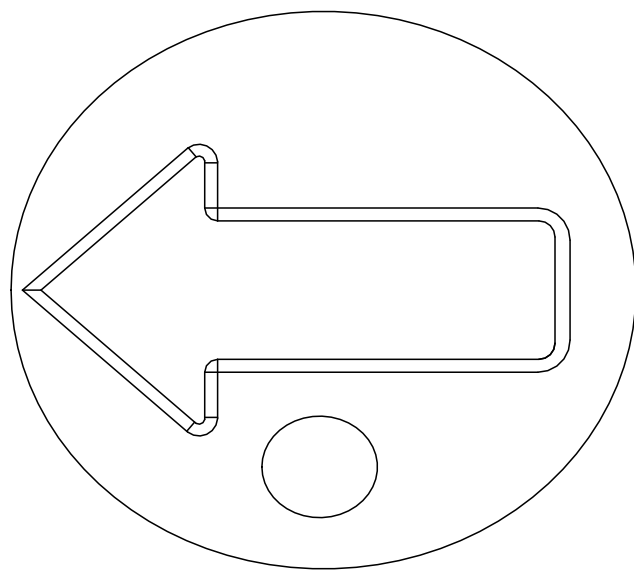


10 POSITION

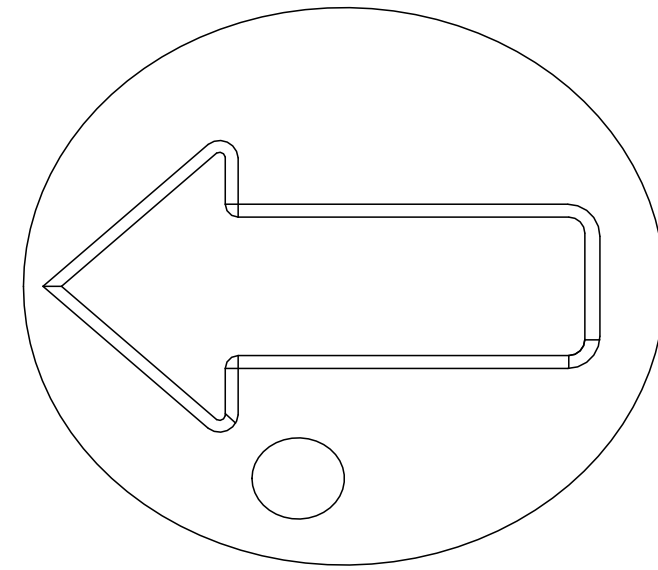


16 POSITION (NO IDENTIFIER)

GRAY CODE-

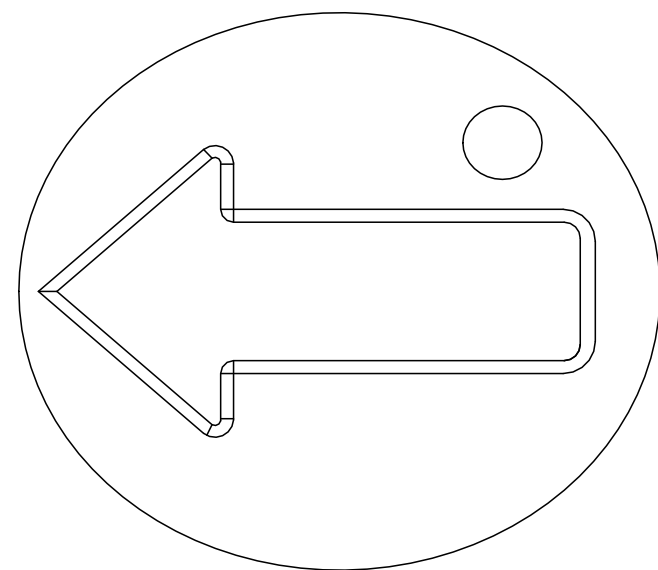


10 POSITION

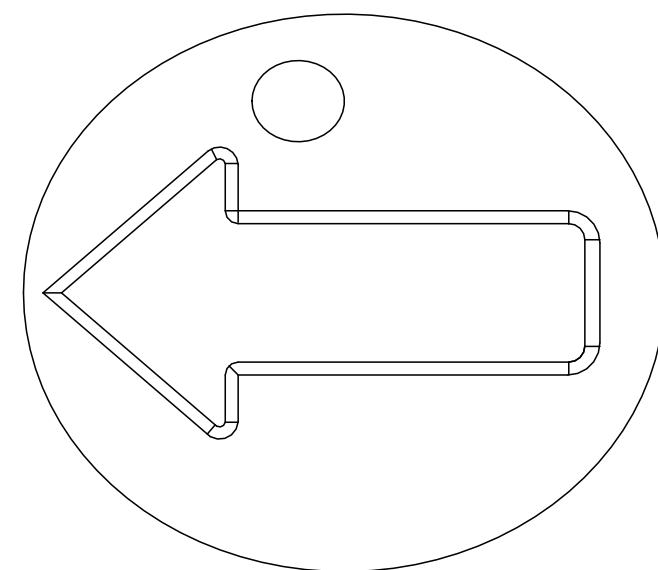


16 POSITION

REAL CODE-



10 POSITION



16 POSITION

**PRELIMINARY**

THIS DRAWING IS A CONTROLLED DOCUMENT.		DWN 09AUG2021 SATHISH KUMAR G	<b>TE</b> TE Connectivity	
DIMENSIONS: mm		CHK 09AUG2021 ALEXANDER, SHARPE		
TOLERANCES UNLESS OTHERWISE SPECIFIED:		APVD 09AUG2021 ALEXANDER, SHARPE	NAME MRSS, MINIATURE ROTARY SWITCH SERIES,HORIZONTAL,1.27, S,STEEL, LASER MARKING	
0 PLC ± =		PRODUCT SPEC	APPLICATION SPEC	
1 PLC ± =		APPLICATION SPEC	WEIGHT	
2 PLC ± =		WEIGHT	SIZE A2	CAGE CODE 00779
3 PLC ± =		FINISH	DRAWING NO C=2396236	RESTRICTED TO
4 PLC ± =		FINISH	SCALE NTS	SHEET 9 of 9
ANGLES ± =		CUSTOMER DRAWING	REV 1	