

**SPECIFICATION**

Mating Cycles	500
Filter type	C
Capacitance	1000pf $\pm$ 20%
Working Voltage	100V
Current Rating	7,5Amp
Insulation Resistance	>1G $\Omega$

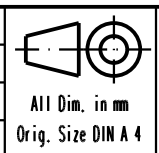
**Minimum Insertion Loss**

FREQUENCY (MHz)	ATTENUATION dB
5	1dB
10	3dB
50	12dB
100	20dB
500	34dB
1000	30dB

PCB Layout, Component side

09643147237	M3
09643147236	4-40UNC 2B
Part number	Nut thread

Mod.	Dat.	Name
31576	03/12/03	AF
31493	12-05-03	PP
31487	17-04-03	PP
HARTING EURL F-95972 Paris		



D-Sub, female, angled, 25 Poles, with turned solder pin, metal bracket with nut and hole

TB 0964314723x