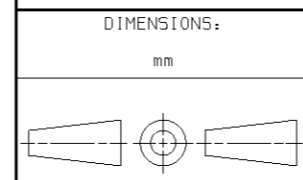


THIS DRAWING IS UNPUBLISHED. RELEASED FOR PUBLICATION AUG 04, 1999
 BY AMP INCORPORATED. ALL RIGHTS RESERVED.

| | | | | |
|-----|------|-----------|-------|--------------|
| LOC | DIST | REVISIONS | | |
| A | 66 | P | LTR | DESCRIPTION |
| | | P2 | | 0150-0275-00 |
| | | | DATE | DWN |
| | | | APR00 | CE |
| | | | | APVD |
| | | | | TE |

| APPLICATOR PARTS LIST | | | | TYPE - LENGTHWISE | | | AMPLIVAR SPLICE PIGTAIL | | | CRIMPING DATA | | | TERMINALS | |
|-----------------------|--------------------------|------|-----------|-------------------|-----------------------|------|-------------------------|--|--------------|---------------|---------|---|-----------|--|
| No. | DESCRIPTION | REQ. | PART NO. | No. | DESCRIPTION | REQ. | PART NO. | | | | | | | |
| 1 | WIRE CRIMPER | 1 | 454540-6 | 42 | SCREW CAP, SPECIAL | 2 | 811651-5 | TO APPLY TERMINAL | | | 61074-1 | | | |
| 2 | INSULATION CRIMPER | - | - | 43 | WASHER, LOCK | 2 | 21057-4 | - | | | 62295 | | | |
| 3 | ANVIL | 1 | 452845-2 | 44 | STRIP HOLD DOWN | 1 | 810640-1 | PAD LTR | CRIMP HEIGHT | WIRE SIZE | - | | | |
| 4 | ANVIL SPACER | - | - | 45 | - | - | - | A | - | - | - | | | |
| 5 | SHEAR BLADE | 1 | 693012-1 | 46 | - | - | - | B | - | - | - | | | |
| 6 | REAR SHEAR PLATE | 1 | 465891-1 | 47 | - | - | - | C | - | - | - | | | |
| 7 | SHEAR BLADE SPACER | - | - | 48 | - | - | - | D | - | - | - | | | |
| 8 | FRONT SHEAR PLATE | - | - | 49 | DRAG STOP, FRONT | - | - | - | - | - | - | | | |
| 9 | REAR ANVIL SPACER PLATE | - | - | 50 | DRAG BUSHING, FRONT | 1 | 452836-1 | CRIMP | SIZE | TYPE | FEED | | | |
| 10 | FRONT ANVIL SPACER PLATE | - | - | 51 | DRAG SCREW, FRONT | 1 | 452837-1 | WIRE | .250 | F | | | | |
| 11 | TOOL SPACER | - | - | 52 | DRAG SPRING, FRONT | 1 | 370572 | - | BLUNT | | .315 | | | |
| 12 | CRIMP SPACER | - | - | 53 | - | - | - | - | FLAT ANVIL | | | | | |
| 13 | FRONT STRIP GUIDE | 1 | 811172-2 | 54 | - | - | - | INSULATION RANGE | | WIRE RANGE | | | | |
| 14 | REAR STRIP GUIDE | 1 | 811173-2 | 55 | ELBOW | 1 | 22317-3 | - | - | CMA | | - | | |
| | | | | 56 | TUBE | 1 | 689446-2 | - | | 7000-12000 | | - | | |
| 15 | RAM | 1 | 471167 | 57 | SCR, SHC 1/4-20 X .75 | 1 | 21001-4 | EXPLODED VIEW | | SIMILAR TO: | | | | |
| 16 | TOOL HOLDER | 1 | 689633-2 | 58 | - | - | - | A-6000 | | A-6000-5 | | - | | |
| 17 | CRIMP & BLADE MOUNT | 1 | 465755-2 | 59 | WASHER, LOCK 1/4 ID | 1 | 21024-6 | REMARKS: | | | | | | |
| 18 | SCR, SHC 10-32 X .62 | 1 | 3-21000-6 | 60 | TENSION ADJ. PLATE | 1 | 374999 | RECOMMENDED SPARE PARTS | | | | | | |
| 19 | APPLICATOR MOUNT ASSY | 1 | 471707-4 | 61 | - | - | - | ITEM 66 FOR SET-UP ONLY. PLACE ITEM 66 BETWEEN ITEM 17 & ALIGNMENT GAGE DURING SET-UP. | | | | | | |
| 20 | BASE PLATE | - | - | 62 | - | - | - | 3. TOP TOOL MOUNTING SEQUENCE FROM TOOL HOLDER ITEM 16 OUTWARD: ITEM 17, 5, & 1. | | | | | | |
| 21 | - | - | - | 63 | - | - | - | 4. SPECIAL: .800 FORWARD. FLAT ANVIL (V NOTCH) | | | | | | |
| 22 | STRIP GUIDE PLATE | - | - | 64 | - | - | - | 5. FOR HARDWARE SEE: 7-687500-7 | | | | | | |
| 23 | ANVIL HOLDER | - | - | 65 | AIR BLAST ASSY | 1 | 455350-2 | THIS APPLICATOR IS TO BE USED ON | | | | | | |
| 24 | AUX ANVIL HOLDER | - | - | 66 | TOOL SPACER | - | 693619-1 | AMP-O-LECTRIC 1-471273-3 | | | | | | |
| 25 | STRIPPER | 1 | 389072-3 | 67 | - | - | - | MECH FEED | | | | | | |
| 26 | STRIPPER MOUNT | - | - | 68 | - | - | - | ALIGN. GAGE 679597-1 | | | | | | |
| 27 | RETAINER PLATE | - | - | 69 | - | - | - | SERIAL NO. DATE SHIPPED | | | | | | |
| 28 | STRIPPER MOUNT BRACKET | - | - | 70 | - | - | - | CUSTOMER NAME AND ADDRESS | | | | | | |
| 29 | STRIPPER BUSHING | - | - | 71 | LUBRICATOR ASSY | 1 | 465184-2 | | | | | | | |
| 30 | STOCK DRAG | 1 | 376666 | 72 | SYNTHETIC OIL | 1 | 22014-1 | | | | | | | |
| 31 | STOCK DRAG HANDLE | - | - | | | | | | | | | | | |
| 32 | STOCK DRAG STUD, REAR | 1 | 354045-1 | 78 | - | - | - | | | | | | | |
| 33 | STOCK DRAG SPRING, REAR | 1 | 1-23847-1 | 79 | - | - | - | | | | | | | |
| 34 | STOCK DRAG ADJ SCREW | 2 | 372997 | | | | | | | | | | | |
| 35 | FEED FINGER HOLDER | - | - | | | | | | | | | | | |
| 36 | FEED FINGER | 1 | 452817-1 | | | | | | | | | | | |
| 37 | FEED FINGER TIP | - | - | | | | | | | | | | | |
| 38 | FEED FINGER SPACER | - | - | | | | | | | | | | | |
| 39 | BASE, CASTING | 1 | 570238 | | | | | | | | | | | |
| 40 | R GUARD | 1 | 460182-1 | | | | | | | | | | | |
| 41 | - | - | - | | | | | | | | | | | |

THIS DRAWING IS A CONTROLLED DOCUMENT.



| DIMENSIONS: | TOLERANCES UNLESS OTHERWISE SPECIFIED: |
|-------------|--|
| mm | |
| 0 PLC | ±- |
| 1 PLC | ±- |
| 2 PLC | ±- |
| 3 PLC | ±- |
| 4 PLC | ±- |
| ANGLES | ±- |

MATERIAL - FINISH -

| | |
|------------------|------------|
| DWN | P. MATHIAS |
| CHK | C. ERISMAN |
| APVD | - |
| PRODUCT SPEC | - |
| APPLICATION SPEC | - |
| WEIGHT | - |

AMP AMP Incorporated
Harrisburg, PA 17105-3608

STANDARD APPLICATOR

| | | | |
|------|-----------|------------|---------------|
| SIZE | CAGE CODE | DRAWING NO | RESTRICTED TO |
| A3 | 00779 | C-565799-2 | - |

CUSTOMER DRAWING AND ASSEMBLY DRAWING SCALE - SHEET 1 OF 1 REV P2