

DO NOT SCALE FROM THIS PRINT

DESIGNED & DIMENSIONED IN INCHES[MILLIMETERS]

PRF92-P-C-EP-135-SS

SERIES  
-92: 2.92MM

GENDER  
-P: PLUG

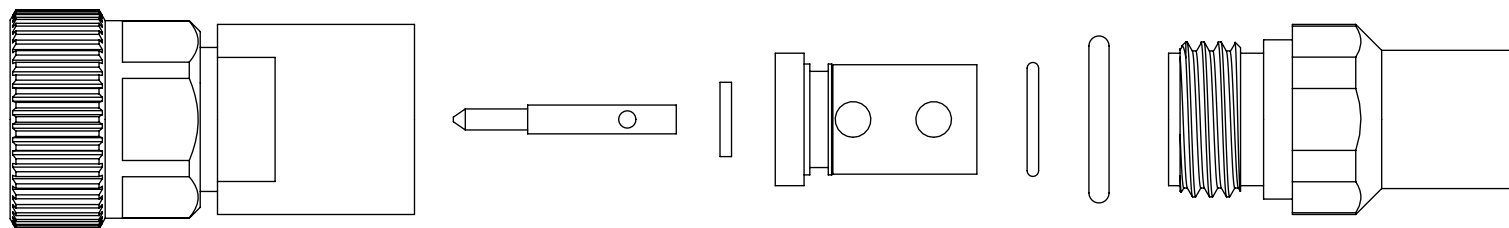
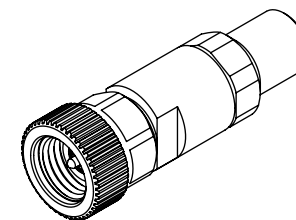
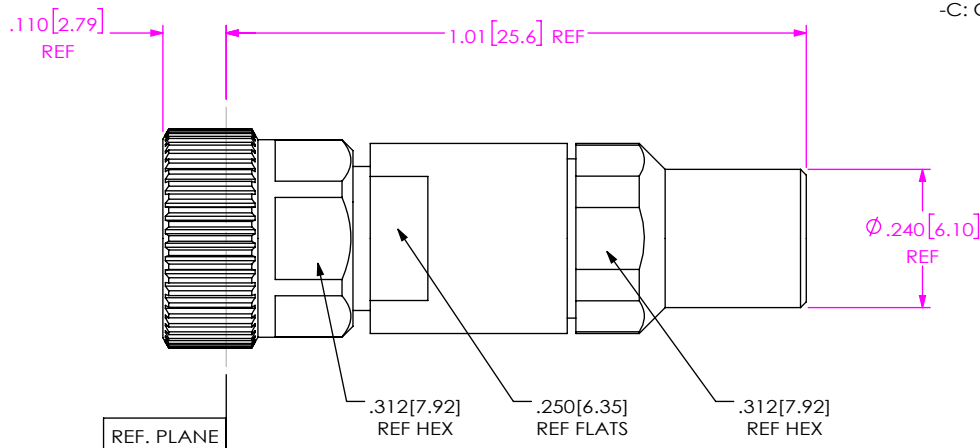
TYPE  
-C: CABLE

TERMINATION  
-S: SOLDER CLAMP

ORIENTATION  
-S: STRAIGHT

CABLE TYPE  
-135: DYNAWAVE DF440W


FINISH  
-EP: 50µ" EXTRA HEAVY GOLD CENTER CONTACT, PASSIVATED OUTER BODY

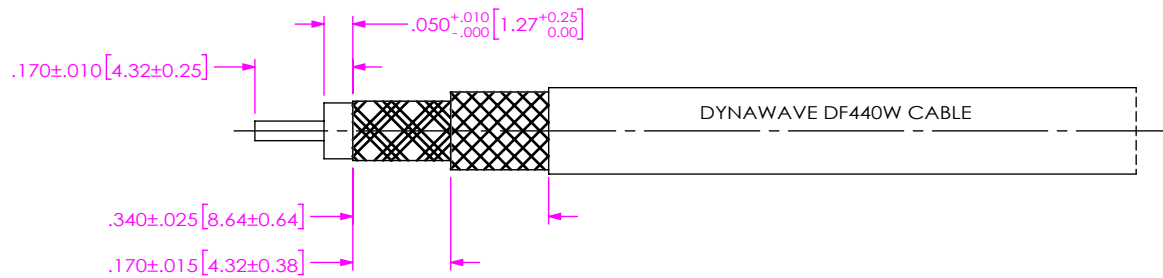


EXPLODED VIEW  
NOT TO SCALE  
(FOR CLARITY ONLY)

NOTES:

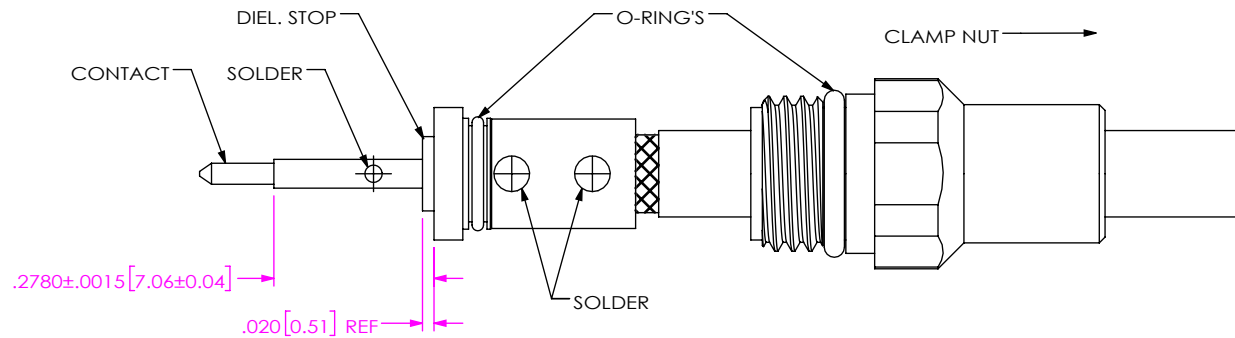
- MATERIAL:  
BODY, COUPLING & CLAMP NUTS: STAINLESS STEEL.  
CONTACTS & LOCK RING: BERYLLIUM COPPER.  
GASKET: SILICONE RUBBER.  
INSULATORS: ULTEM.
- FINISH:  
BODY, COUPLING CLAMP NUTS: PASSIVATED.  
CONTACTS: GOLD OVER NICKEL PLATE,  
50 µ" MIN GOLD OVER 50 µ" MIN NICKEL.
- PCI P/N: 4035.

UNLESS OTHERWISE SPECIFIED, DIMENSIONS ARE IN INCHES. TOLERANCES ARE: DECIMALS                      ANGLES .XX: ±.01 [0.3]                      1° .XXX: ±.005 [0.13] .XXXX: ±.0005 [0.013]	* PROPRIETARY NOTE * THIS DOCUMENT CONTAINS CONFIDENTIAL AND PROPRIETARY INFORMATION AND ALL DESIGN, MANUFACTURING, REPRODUCTION, USE, PATENT RIGHTS AND SALES RIGHTS ARE EXPRESSLY RESERVED BY SAMTEC, INC. THIS DOCUMENT SHALL NOT BE DISCLOSED, IN WHOLE OR PART, TO ANY UNAUTHORIZED PERSON OR ENTITY NOR REPRODUCED, TRANSFERRED OR INCORPORATED IN ANY OTHER PROJECT IN ANY MANNER WITHOUT THE EXPRESS WRITTEN CONSENT OF SAMTEC, INC.	 520 PARK EAST BLVD, NEW ALBANY, IN 47150 PHONE: 812-944-6733    FAX: 812-948-5047 e-Mail: info@SAMTEC.com    code 55322
		DO NOT SCALE DRAWING                      SHEET SCALE: 3:1
		DWG. NO. PRF92-P-C-EP-135-SS
		BY: HENSON T                      08/31/2020                      SHEET 1 OF 2



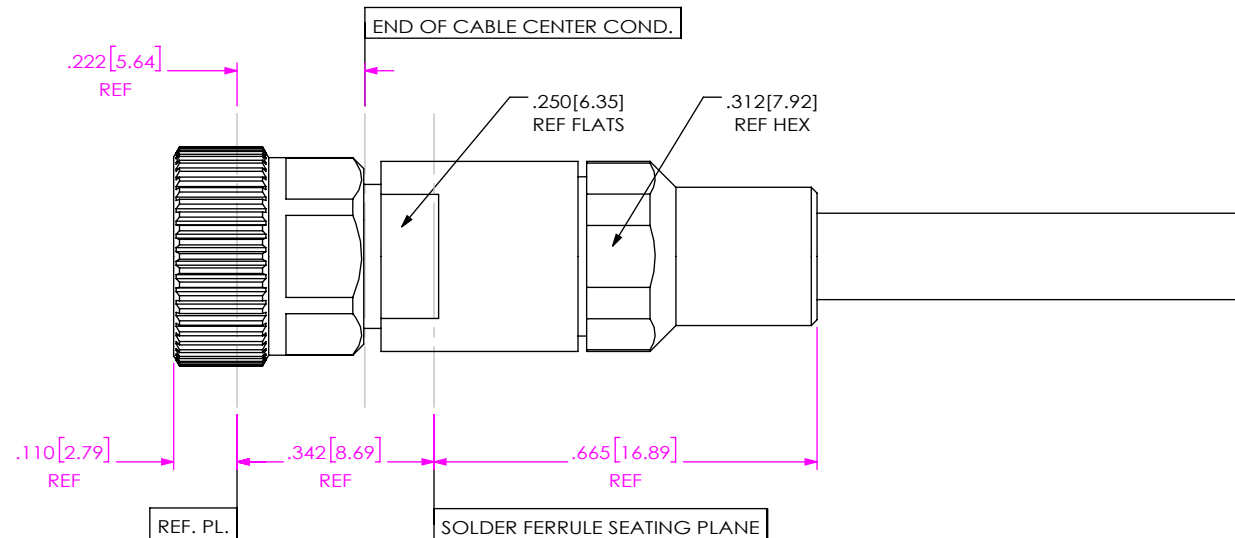
1. TRIM CABLE TO EXPOSE CENTER CONDUCTOR, DIELECTRIC AND BRAIDS AS SHOWN.

IN-PROCESS 1



- 2A. INSTALL O-RINGS ONTO CLAMP NUT AND FERRULE WHERE SHOWN AND SLIDE CLAMP NUT OVER CABLE IN ORIENTATION SHOWN.
- 2B. INSERT CABLE INTO SOLDER FERRULE UNTIL CABLE DIELECTRIC IS FLUSH WITH SOLDER FERRULE FACE AND SOLDER CABLE BRAIDS WHERE SHOWN.
- 2C. SLIDE DIELECTRIC STOP OVER CABLE CENTER CONDUCTOR AND SOLDER CONTACT FLUSH TO STOP TO DIMENSION SHOWN.

IN-PROCESS 2



3. INSERT CABLE/CONTACT SUB-ASSEMBLY INTO CONNECTOR UNTIL SEATED AND TIGHTEN CLAMP NUT TO 25-35 IN-LBS.

IN-PROCESS 3

**PROPRIETARY NOTE**  
 THIS DOCUMENT CONTAINS CONFIDENTIAL AND PROPRIETARY INFORMATION AND ALL DESIGN, MANUFACTURING, REPRODUCTION, USE, PATENT RIGHTS AND SALES RIGHTS ARE EXPRESSLY RESERVED BY SAMTEC, INC. THIS DOCUMENT SHALL NOT BE DISCLOSED, IN WHOLE OR PART, TO ANY UNAUTHORIZED PERSON OR ENTITY NOR REPRODUCED, TRANSFERRED OR INCORPORATED IN ANY OTHER PROJECT IN ANY MANNER WITHOUT THE EXPRESS WRITTEN CONSENT OF SAMTEC, INC.



520 PARK EAST BLVD, NEW ALBANY, IN 47150  
 PHONE: 812-944-6733 FAX: 812-948-5047  
 e-Mail: info@SAMTEC.com code 55322

DO NOT SCALE DRAWING

SHEET SCALE: 3:1

DESCRIPTION: 2.92MM PLUG, SOLDER CLAMP FOR DYNAWAVE DF440W CABLE

DWG. NO. PRF92-P-C-EP-135-SS

BY: HENSON T 08/31/2020 SHEET 2 OF 2