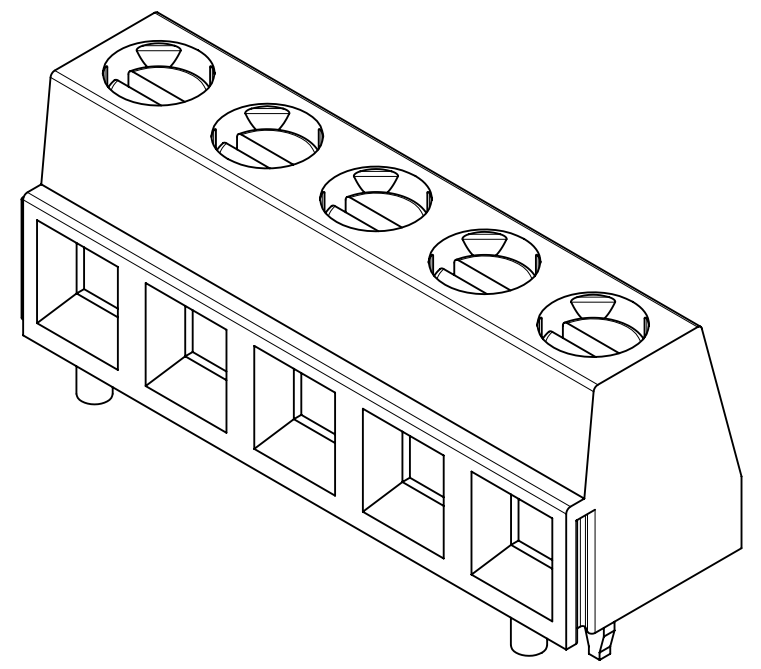
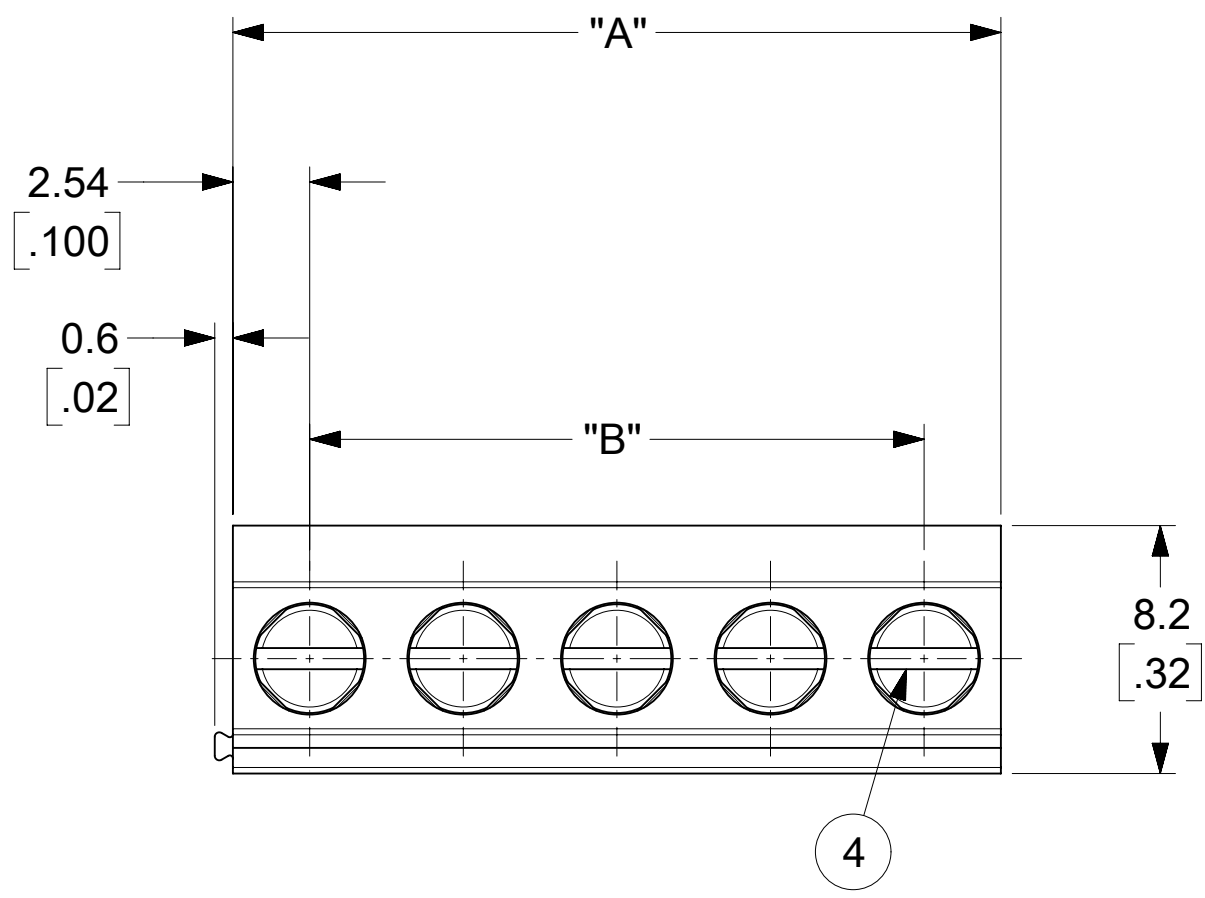
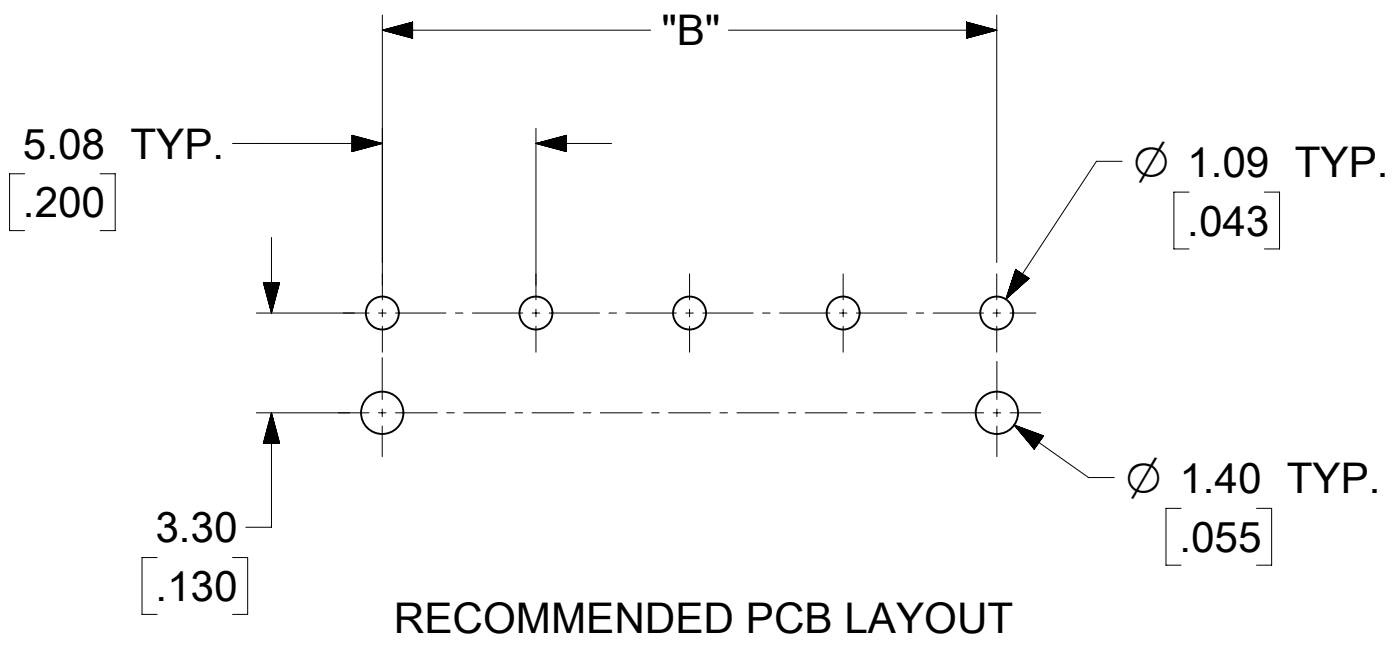
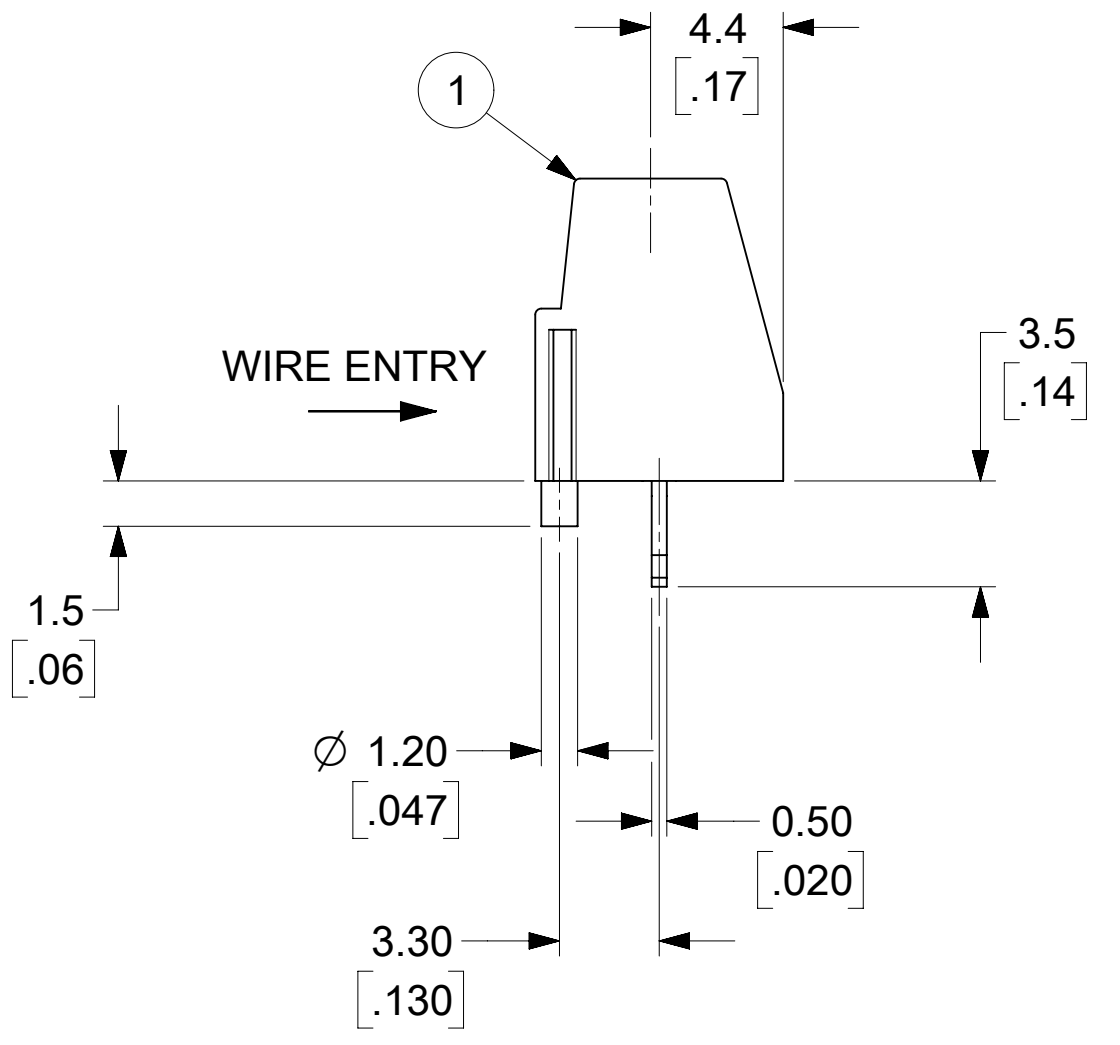
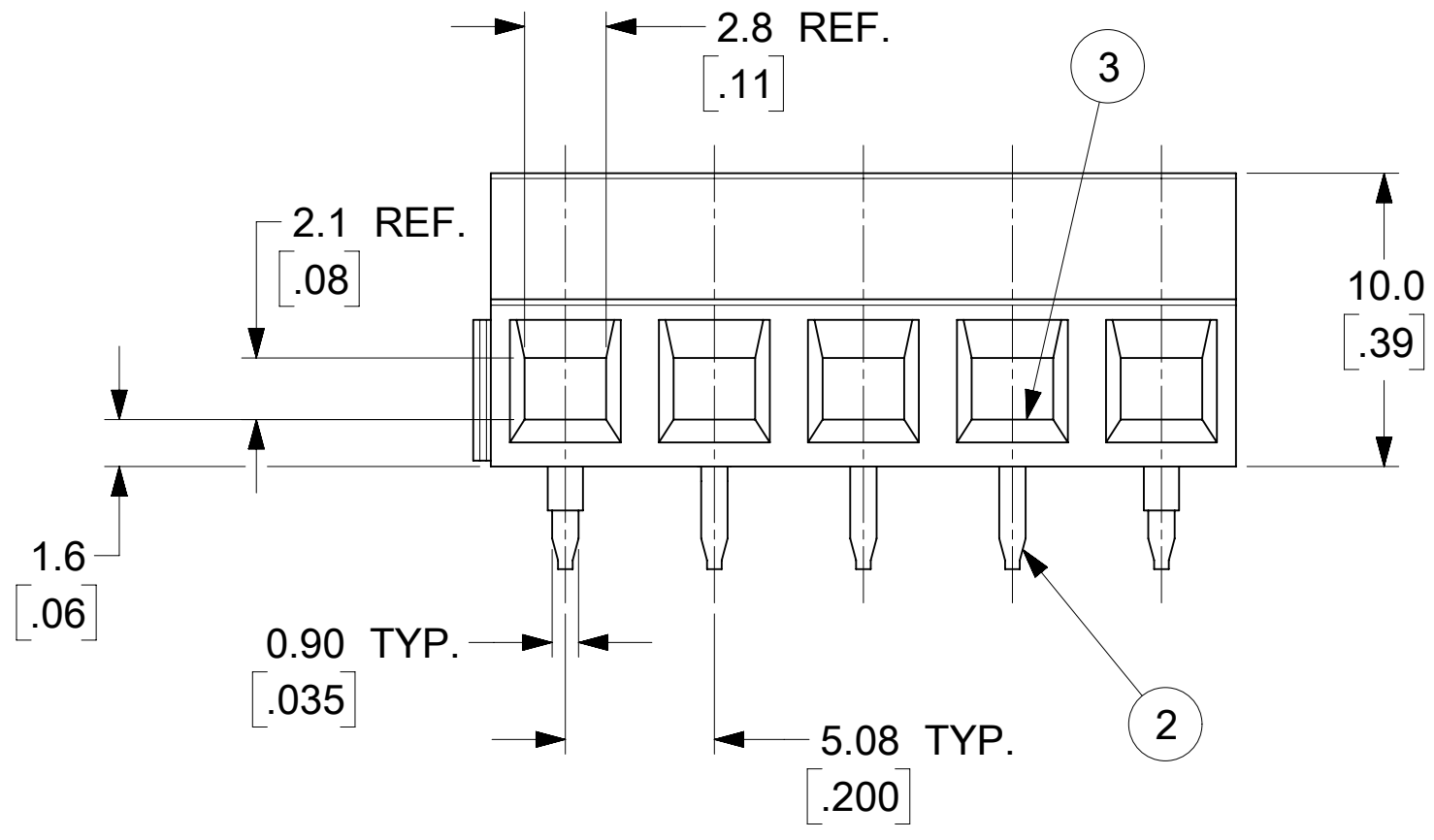


NO. OF CIRC. "XX"	DIM. "A"		DIM. "B"		MATERIAL NUMBER
	mm	IN	mm	IN	
02	10.2	.40	5.08	.200	398890042
03	15.2	.60	10.16	.400	
04	20.3	.80	15.24	.600	
05	25.4	1.00	20.32	.800	398890043
06	30.5	1.20	25.40	1.000	398890044



AUX. VIEWS
(5 CIRCUIT SHOWN)

- NOTES:
1. MATERIAL: SEE TABLE
 2. FINISHES: SEE TABLE
 3. "XX" REFERS TO QUANTITY OF CIRCUITS.
 4. WIRE RANGE: 16-30 AWG (A1)
 5. RATED VOLTAGE: 300V PER UL (A1)
 6. RATED CURRENT: 13.5A PER UL (A1)
 7. RECOMMENDED TIGHTENING TORQUE: 6.0 LB. IN. (A1)
 8. WIRE STRIP LENGTH: 6mm(.24in)
 9. OPERATING TEMPERATURE: -40°C TO +105°C
 10. POLARIZING PEGS ARE ONLY ON END CIRCUITS.



ITEM	QTY.	DESCRIPTION	MATERIAL	FINISH
4	XX	SCREW, M3	COPPER ALLOY	NICKEL PLATED
3	XX	CLAMP, RISING	COPPER ALLOY	NICKEL PLATED
2	XX	TERMINAL	COPPER ALLOY	TIN PLATED
1	1	HOUSING, UL94 V-0	PA66	BLACK

FUNCTIONAL SYMBOLS		THIS DRAWING CONTAINS INFORMATION THAT IS PROPRIETARY TO MOLEX ELECTRONIC TECHNOLOGIES, LLC AND SHOULD NOT BE USED WITHOUT WRITTEN PERMISSION		CURRENT REV DESC: MODIFIED NOTES #4 TO #7	
$F_A = 0$	DIMENSION UNITS	SCALE	EC NO: 706702		
$F_C = 0$	MM/INCH	4:1	DRWN: ABENJAMINLW 2022/04/27		
$F_P = 0$	GENERAL TOLERANCES (UNLESS SPECIFIED)		CHK'D: DACHAMMER 2022/05/12		
DIVISIONAL SYMBOLS			APPR: JFMURPHY 2022/05/13		
	4 PLACES	± --- ± ---	INITIAL REVISION:		
	3 PLACES	± --- ± .005	DRWN: CLYORK 2008/03/28		
	2 PLACES	± 0.13 ± .01	APPR: JMACNEIL 2008/04/18		
	1 PLACE	± 0.25 ± ---	THIRD ANGLE PROJECTION		
	0 PLACES	± --- ± ---	DRAWING SERIES		
	ANGULAR TOL	± 2°	C-SIZE 39889		
DRAFT WHERE APPLICABLE MUST REMAIN WITHIN DIMENSIONS		MATERIAL NUMBER		CUSTOMER	
		SEE CHART		GENERAL MARKET	
		DOCUMENT NUMBER		DOC TYPE DOC PART REVISION	
		SD-39889-003		PSD 001 A1	
		SHEET NUMBER		1 OF 1	