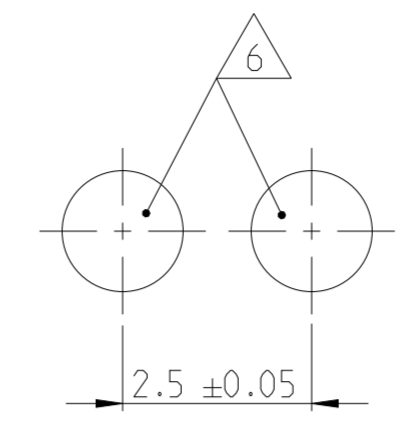


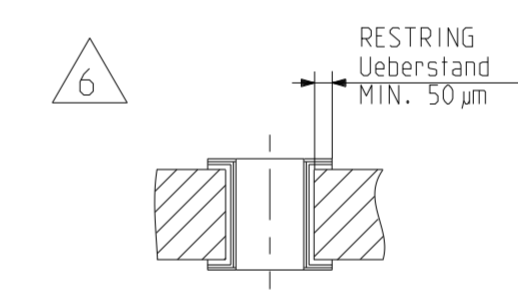
P	LTR	DESCRIPTION	DATE	DWN	APVD
A6		ECR-21-003841	31MAR2021	SK	AN
A7		ECR-21-004821	26APR2021	KG	PNI
A8		ECR-21-109980	16AUG2021	SK	AN
A9		ECR-21-117769	19OCT2021	KG	AN

PCB LAYOUT
LEITERPLATTEN-LAYOUT



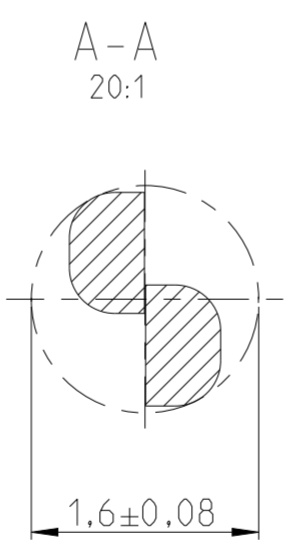
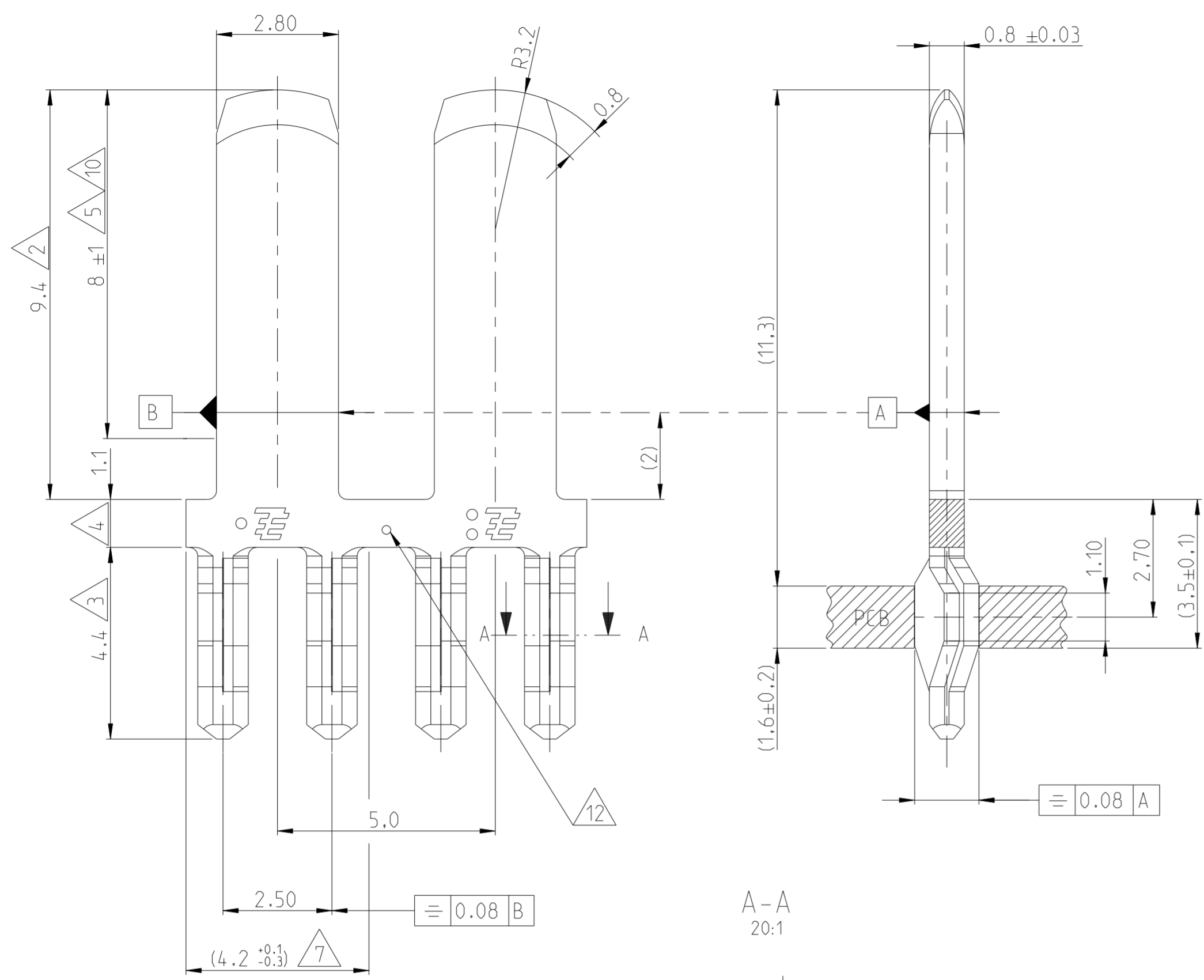
Notes:
Bemerkungen:

- 1 1.27-2.54 μm Ni OVER THE COMPLETE LENGTH
1.27-2,54 μm Ni ueber die gesamte Laenge
- 2 2-3 μm Sn
- 3 0.8-1.8 μm Sn
- 4 Sn
- 5 Min. 0.8 μm Au

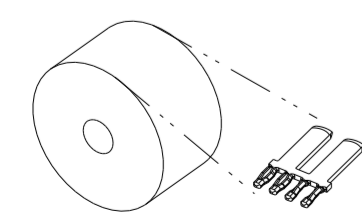


PLATED THROUGH HOLE SPECIFICATION Spezifikation furr durchplatierte Bohrungen	
Cu THICKNESS Kupferschichtdicke	25-50 μm
Sn THICKNESS Zinn-Schichtdicke	4-15 μm
DRILLED HOLE Ø1.5 ±0.025 Bohrungs-Ø 1.5 ±0.025	FINISHED HOLE Ø1.29 +0.15 Platierter Loch-Ø 1.29 +0.15

- 7 DIMENSION OF LOOSE PIESE
Mass fuer Einzelteil
- 8 TO BE REELED ON PANCAKE REEL WITH INTERLEAVING PAPER
Pappspulen mit Zwischenlagenpapier
- 9 TO BE REELED ON PLASTIC REEL WITH INTERLEAVING PAPER
Kunststoffspulen mit Zwischenlagenpapier
- 10 3-5 μm Ag
- 11 TO BE REELED ON HARD FIBER REEL WITH INTERLEAVING PAPER
Hartfaserspulen mit Zwischenlagenpapier
- A9 12 PUNCH MARK, BOTH SIDES
Koernerpunkt, beidseitig



DIRECTION OFF TOP OF REEL



- 1-1452688-2
- 1-1452688-3
- 1-1452688-4
- 2-1452688-1
- 3-1452688-1
- 3-1452688-2

A9	TE PART NO.	REV.	PUNCH MARK	MATERIAL	SURFACE	REEL PACKING
A9	3-1452688-6	A	12	CuSn4	3 10 OVER 1 9	
A9	3-1452688-5	A	12	CuSn4	3 10 OVER 1 8	
A9	3-1452688-2	A		CuSn4	3 10 OVER 1 9	
A9	3-1452688-1	A		CuSn4	3 10 OVER 1 8	
	2-1452688-1	A		CuSn4	3 5 OVER 1 9	
	1-1452688-4	A		CuSn4	2 3 4 OVER 1 11	
	1-1452688-3	A		CuSn4	2 3 4 OVER 1 9	
	1-1452688-2	A		CuSn4	2 3 4 OVER 1 8	

THIS DRAWING IS A CONTROLLED DOCUMENT.

DIMENSIONS: mm

TOLERANCES UNLESS OTHERWISE SPECIFIED:
n. ISO 8015
0-PLC ± 0.2
1-PLC ± 0.2
2-PLC ± 0.1
3-PLC ±
4-PLC ±
ANGLES ± ±

MATERIAL: -
FINISH: -

DWN: H.-J. Arnold 13SEP2002
CHK: J.Ryll 13SEP2002

APVD: 114-18280
PRODUCT SPEC: 108-18644
APPLICATION SPEC: 114-18280
WEIGHT: -

NAME: TAB 2.8x0.8 WITH ACTION PIN
Flachstecker 2.8x0.8 mit Action Pin

SIZE: A2
CAGE CODE: 00779
DRAWING NO: C-1452688
RESTRICTED TO: -

CUSTOMER DRAWING
SCALE: 10:1
SHEET: 1 OF 1
REV: A9

TE Connectivity