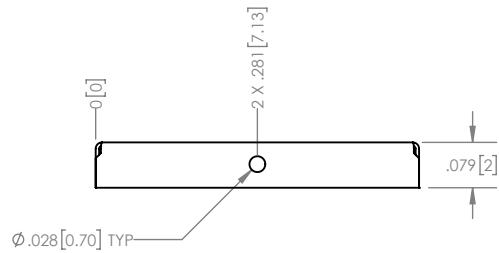
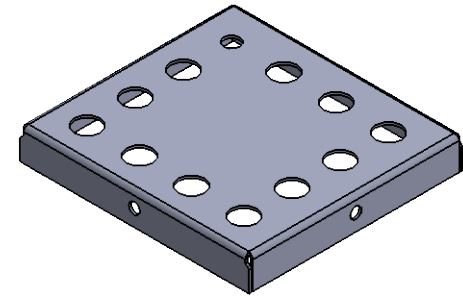
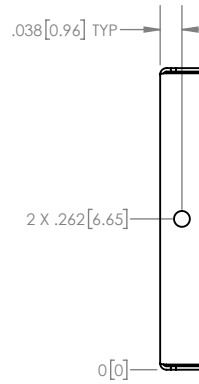
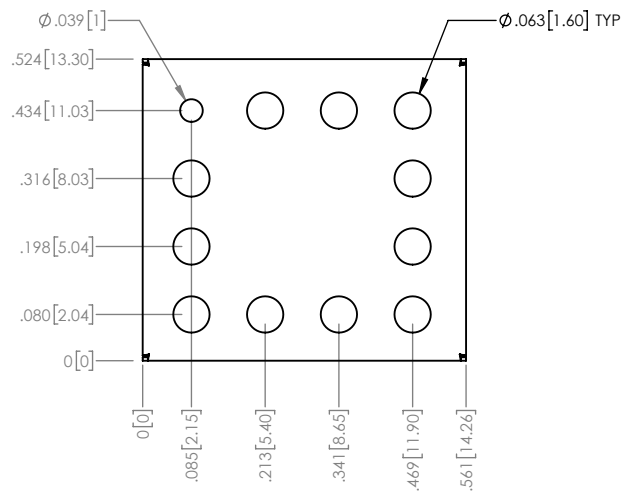


NOTES:

- MATERIAL: 0.006" TIN PLATED STEEL PER ASTM A623/A624



PROPRIETARY NOTICE: THESE DRAWINGS, LISTS OR SPECIFICATIONS ARE THE CONFIDENTIAL INFORMATION AND/OR TRADE SECRET OF 3G SHIELDING SPECIALTIES, P., AND ISSUED IN STRICT CONFIDENCE. NO PART OF THIS DOCUMENT IS TO BE REPRODUCED, TRANSMITTED, USED FOR THE PHYSICAL MANUFACTURE OR SALE OF EQUIPMENT OR LISTED FOR ANY OTHER PURPOSE OTHER THAN EVALUATION.

UNLESS OTHERWISE SPECIFIED U/M INCHES	TOLERANCE $\pm 0.005$
DATE	16-01-26
 ROHS COMPLIANCE 2011/65/EU	



PART NUMBER	REV.
<b>PIC-S-201C</b>	<b>0</b>
DESCRIPTION	SHIELD COVER
SCALE	3:1
SHEET	1 OF 1