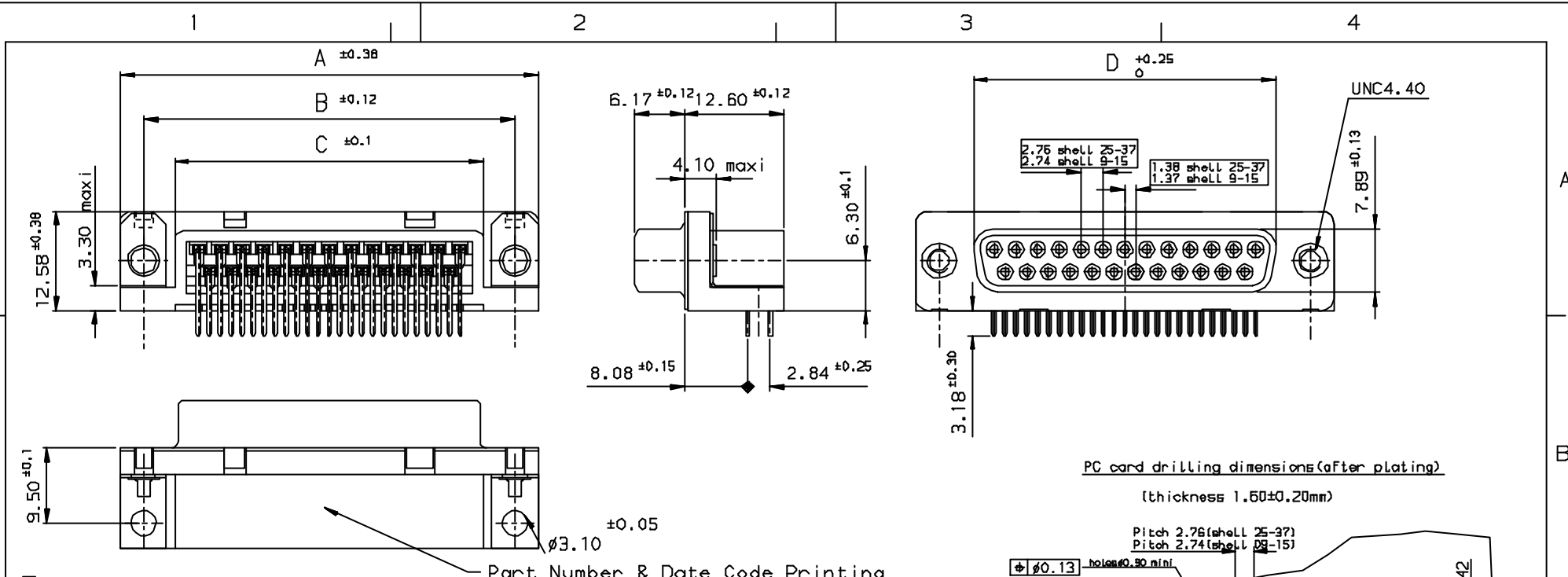


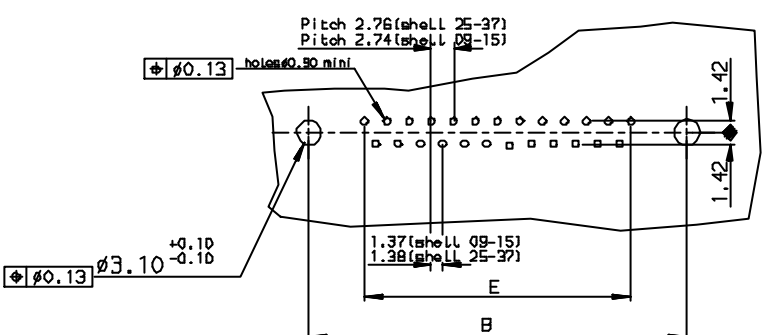
Tous droits strictement réservés. Reproduction ou communication a des tiers interdite sans la permission écrite de la Direction des ventes et du marketing. Property of FCI. Droits de reproduction FCI.

FCI

All rights strictly reserved. Reproduction or issues in third parties in any form without the written authorization of the Direction of Sales and Marketing. Property of FCI. Copyright FCI.



PC card drilling dimensions (after plating)
(thickness 1.60±0.20mm)



		PART NUMBER							
SHELL	A±0.38	B±0.12	C±0.10	D±0.25	E±0.07	Plating:0.76µ AU	Plating:Flash AU		
09	30.81	24.99	16.95	16.21	10.96	D09S33E6UX00**	D09S33E4UXD0**		
15	39.14	33.32	25.18	24.54	19.18	D15S33E6UX00**	D15S33E4UXD0**		
25	53.03	47.04	39.12	38.25	33.12	D25S33E6UX00**	D25S33E4UXD0**		
37	69.32	63.50	55.68	54.71	49.68	D37S33E6UX00**	D37S33E4UXD0**		

REQUIREMENTS

Technical characteristics:

Shell: steel tin plated
 Insulators: self-extinguishing black polyster, UL Class 94V0
 Contacts size 20: phosphor bronze, gold 0.76µ on mating end, bright tin on termination end over nickel on entire contact
 Cycles > 500 .

Metal plate for electrical continuity: brass, tin plated
 Nuts: brass, tin plated

Electrical characteristics:

max. current rating: 5A
 Test voltage: 1000V
 Rated voltage: 300V
 Contact resistance: ≤15mΩ
 Shell resistance: ≤5mΩ
 Insulation resistance: >5000MΩ

Climatic characteristics:

Operating temperature range: -55°C +125°C

Dimensions:

in accordance with MIL-C-24308

LF FOR LEAD FREE

FOR R0HS DETAILS REFER DWG. NO. C01-8646-0000

Utr	Eon no	Dr	date
1	005-0124	JS	27/7/05

		Tolerance		Projection		MM	
		✓ LINEAR ±0.1		ANGULAR ±1°		↔	
Dr JOHN SLEEBA		7/1/03		Product Family D-SUB		Size A3	
Eng GEORGE VJ		7/1/03		Spec ref		Scale	
Chr GEORGE VJ		27/7/05		Material		ECN	
Appr K Somasundaram		27/7/05					
FCI		Title SOCKET CONNECT.DELTA D right angle with nut & metal plate				Dwg no C01-8646-0148	
Catalog no DELTA-D		CUSTOMER COPY		Sheet 1 of 1		Rev. c	

INDEX	DATE	REVISION DESCRIPTION
c	27/7/05	LEAD FREE DETAILS ADDED