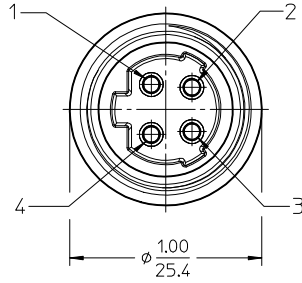
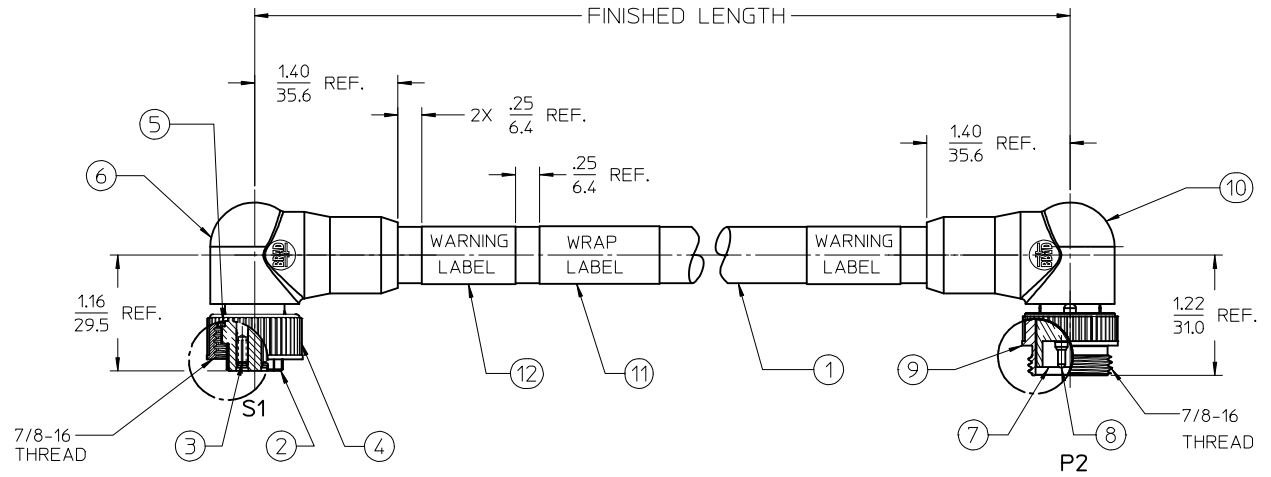
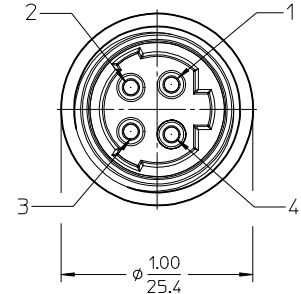


S1		P2
1	BLACK #1	1
2	BLACK #2	2
3	BLACK #3	3
4	GREEN/YELLOW	4

WIRING DIAGRAM



FEMALE FACE VIEW
SCALE: 2X



MALE FACE VIEW
SCALE: 2X

NOTES:

- 1) MATERIAL: SEE TABLE
- 2) FINISHES: SEE TABLE
- 3) WRAP LABEL IS MARKED WITH P/N, DATE CODE VOLTAGE & AMPERAGE
- 4) MATES WITH: MINI CHANGE 4 POLE RECEPTACLE (ALT KEY)
- 5) ELECTRICAL DATA:
14AWG UL TYPE: TC-ER STRANDED CABLE
MAX VOLTAGE: 600V
MAX CURRENT: 15A
PROTECTION IP67 (WHEN MATED)
TEMPERATURE RANGE: -20°C TO 90°C
- 6) PACKAGING:
CABLE ASSEMBLIES ARE BAGGED SEPERATLY IN POLY BAGS WITH BAR CODE LABEL ATTACHED TO OUTSIDE OF BAG.

PART NUMBER LEGEND

114133K20MXXX

MC 4P FEM 90D TO MALE 90 DEG (EXT THD), ALT KEY

CABLE TYPE: 14 AWG TC ER, BLACK

FINISHED LENGTH:
M001= .1M
M010= 1.0M
M100= 10.0M

ITEM	QTY	DESCRIPTION	MATERIAL	FINISH
12	2	WARNING LABEL	VINYL	ORANGE/BLACK
11	1	WRAP LABEL	VINYL	BLACK/YELLOW
10	1	90 DEG OVERMOLD	PVC	BLACK
9	1	MALE COUPLING NUT	ZINC ALLOY	BLACK
8	4	CONTACT PIN	Cu ALLOY	GOLD PLATE
7	1	MALE INSERT	PVC	BLACK
6	1	90 DEG OVERMOLD	PVC	BLACK
5	1	FRICITION RING	NYLON	WHITE
4	1	FEMALE COUPLING NUT	ZINC ALLOY	BLACK
3	4	CONTACT SOCKET	Cu ALLOY	GOLD PLATE
2	1	FEMALE INSERT	PVC	BLACK
1	SEE NOTE 5	CABLE	TPE	BLACK

RELEASED	EC NO: IPG2016-0734	2015/11/16	DRWRNSTONE	2015/12/09	CHKDK JOZWIK	2016/02/29	APPR: BWOODMAN
REV	A		DESCRIPTION				

QUALITY SYMBOLS	GENERAL TOLERANCES (UNLESS SPECIFIED)
▽=0	mm
▽=0	INCH
	ANGULAR ± 1°
	DRAFT WHERE APPLICABLE MUST REMAIN WITHIN DIMENSIONS

DIMENSION STYLE	SCALE	DESIGN UNITS	THIRD ANGLE PROJECTION
IN/MM	1:1	INCH	
DRAWN BY	DATE	TITLE	
RSTONE	2015/11/16	MINI CHANGE CABLE ASSY FEM 90D TO MALE 90D EXTERNAL THD, ALT KEY	
CHECKED BY	DATE		
KJOZWIK	2015/12/09		
APPROVED BY	DATE		
BWOODMAN	2016/02/29		
MATERIAL NO.	DOCUMENT NO.	SHEET NO.	
-	SD-130062-029	1 OF 1	

THIS DRAWING CONTAINS INFORMATION THAT IS PROPRIETARY TO MOLEX INCORPORATED AND SHOULD NOT BE USED WITHOUT WRITTEN PERMISSION