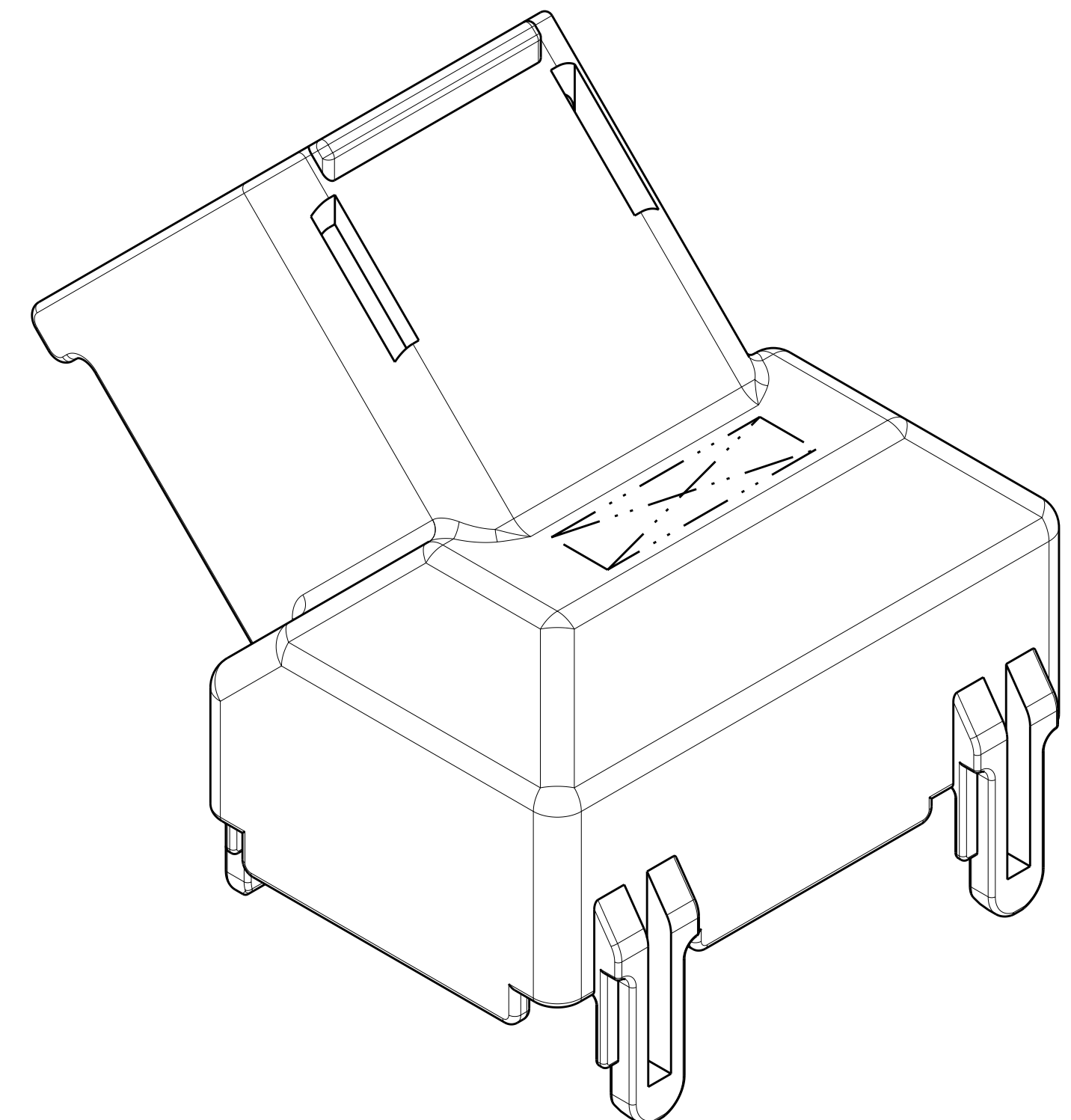
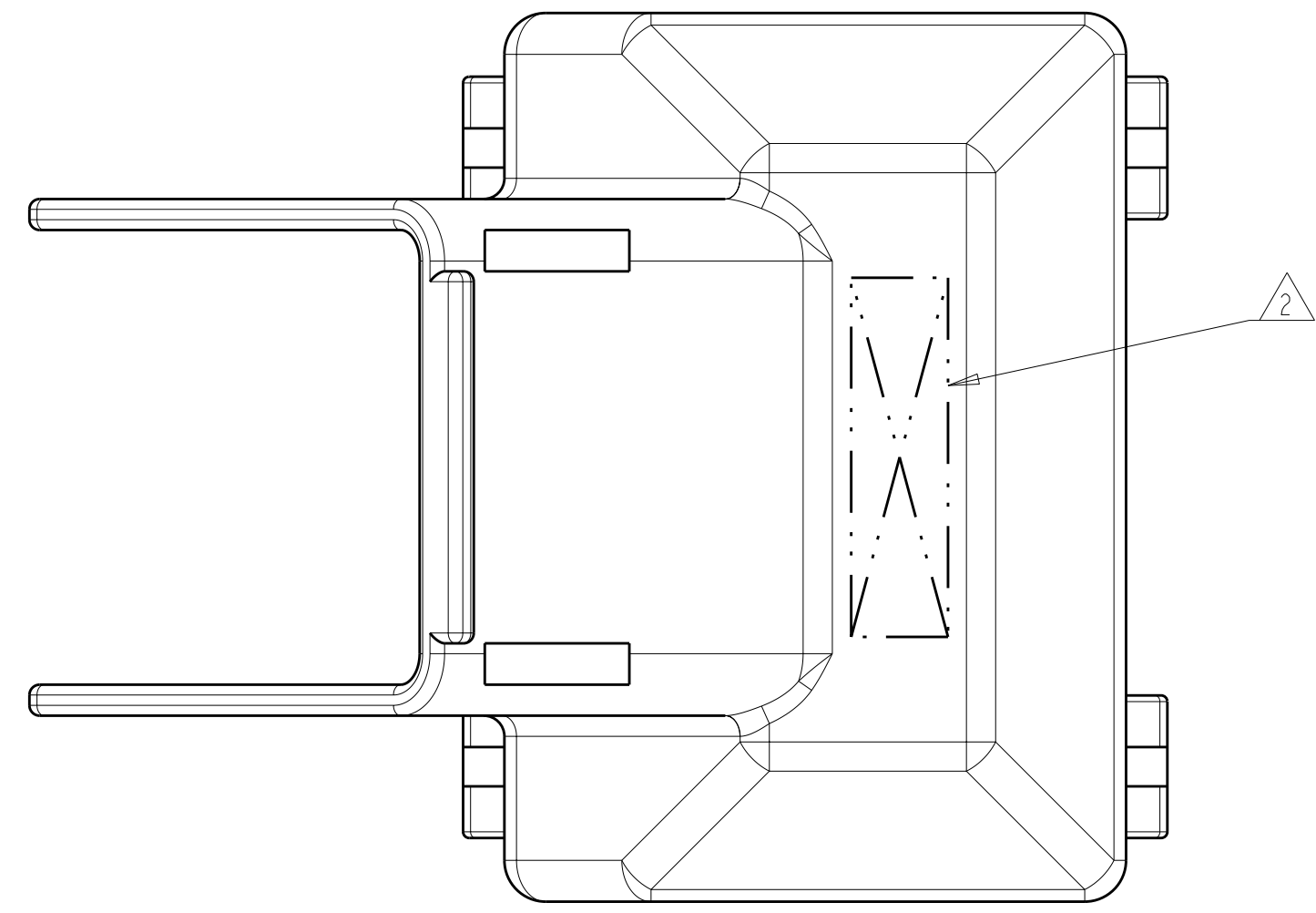
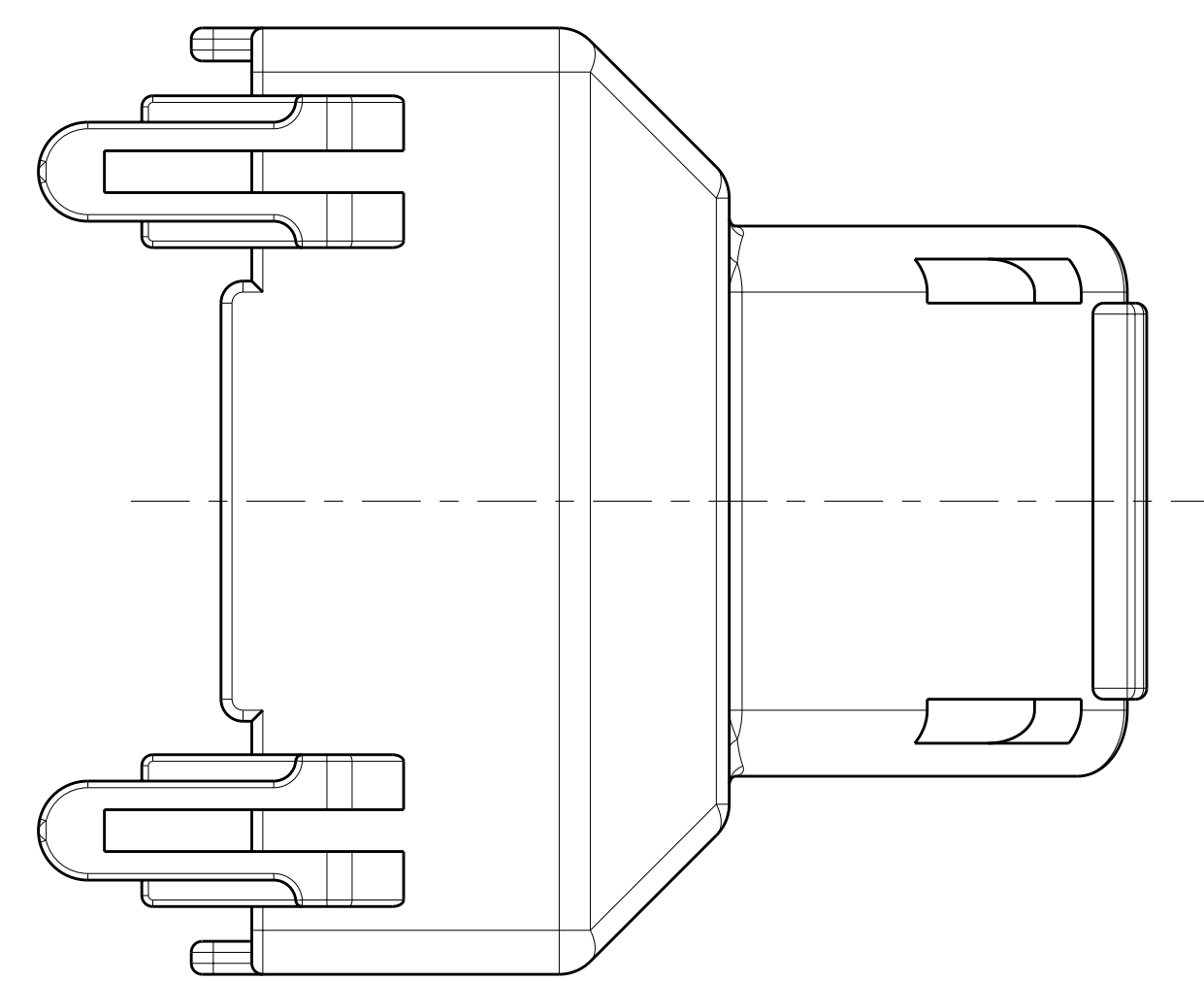
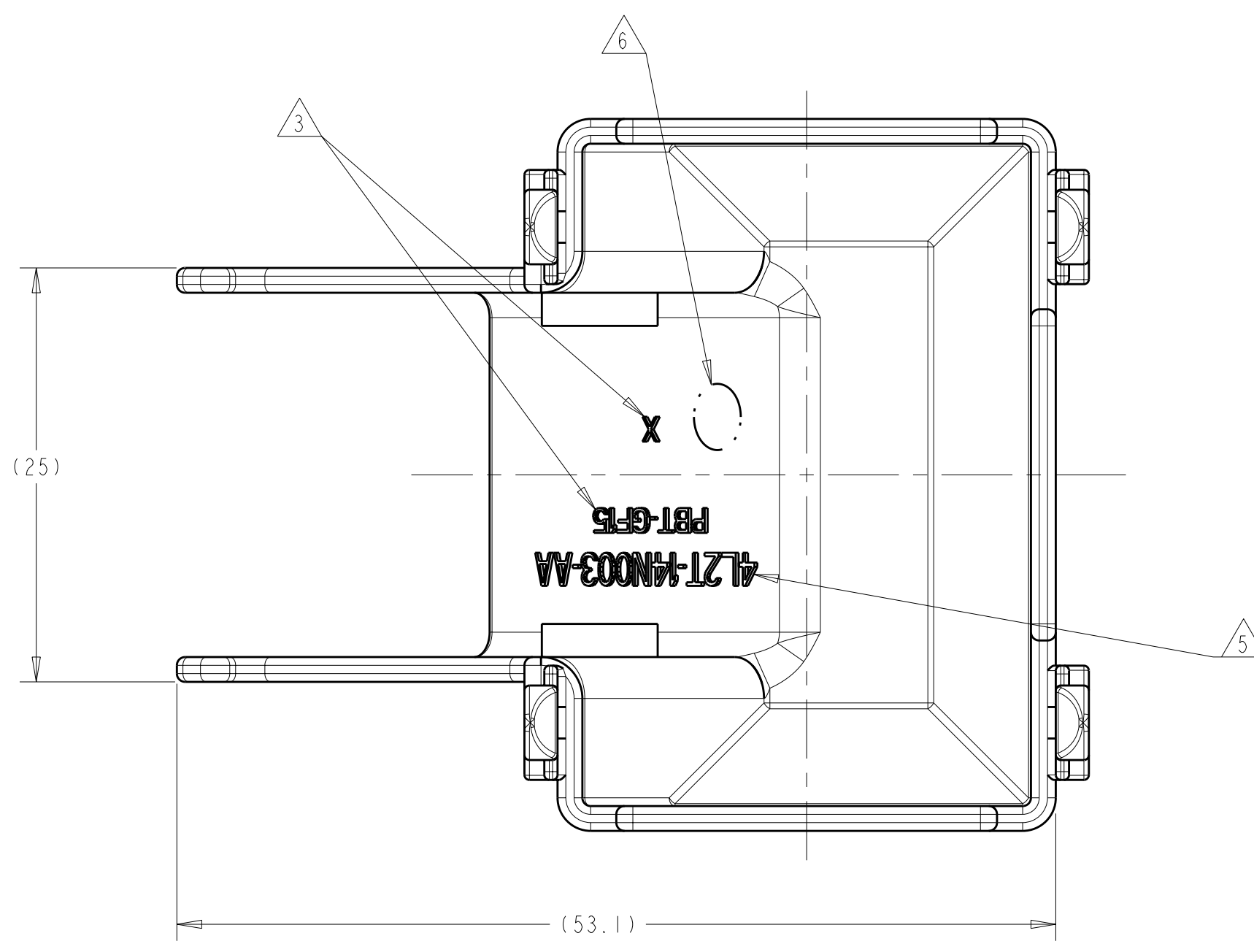
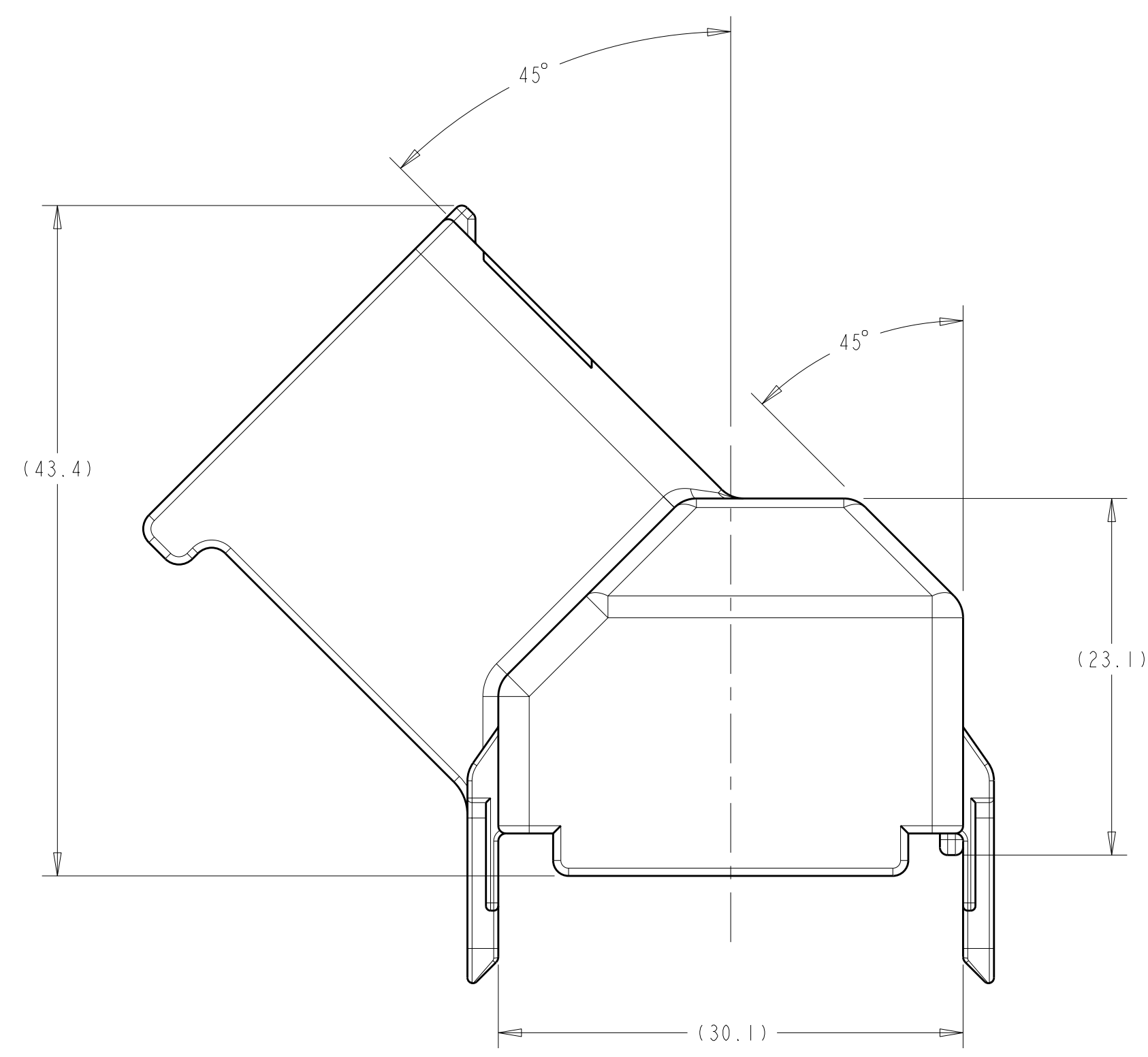


LOC	DIST	REV	DATE	BY	CHK	APPD
FX	00					

REVISIONS		DATE	DWN	APPD
A	RLSD PER D06-055	23MAR2006	RGV	TJV
A1	REV PER ECO-10-015982	10AUG2010	HM	DCM



- 1 MATERIAL: PBT-GF15
COLOR: BLACK
- 2 COMPANY LOGO LOCATED APPROXIMATELY AS SHOWN.
- 3 MOLD CAVITY I.D. & RECYCLING CODE >PBT-GF15< AS SHOWN.
- 4. 25% MAXIMUM REGRIND.
- 5 PART NUMBERS APPROXIMATELY AS SHOWN AS STATED IN PART NUMBER TABLE.
- 6 DATE CODE APPROXIMATELY AS SHOWN.



4L2T-14N003-AA	1488572-1
CUSTOMER PART NO.	PART NUMBER

<small>THE DRAWING IS TO BE USED FOR THE DESIGN OF THE PRODUCT. THE USER SHALL BE RESPONSIBLE FOR VERIFYING THE DIMENSIONS AND TOLERANCES OF THE PARTS AND ASSEMBLIES. THE USER SHALL BE CONTACTED FOR THE LATEST REVISION.</small>		DWN: R. VESTAL 23MAR2006 CHK: T. VALASEK 23MAR2006 APPD: T. VALASEK 23MAR2006	Tyco Electronics Harrisburg, PA 17105-3608
DIMENSIONS: mm 	TOLERANCES UNLESS OTHERWISE SPECIFIED: 0 PLC ± 1 PLC ±0.3 2 PLC ±0.10 3 PLC ± 4 PLC ± ANGLES ±1°	NAME: 50-WAY, 45 DEGREE EXIT WIRE DRESS PRODUCT SPEC: APPLICATION SPEC: WEIGHT: CUSTOMER DRAWING	Tyco Electronics Harrisburg, PA 17105-3608 SIZE: A1 CAGE CODE: 00779 DRAWING NO: C=1488572 RESTRICTED TO: A1
MATERIAL: PBT-GF15	FINISH:	SCALE: 3:1	SHEET 1 OF 1 REV A1