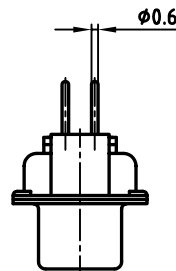
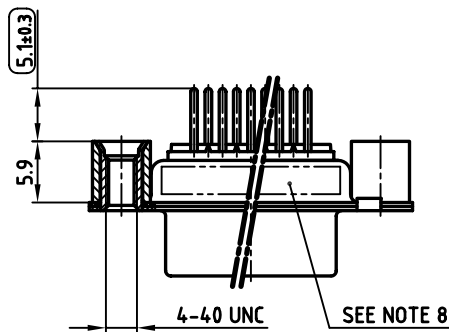
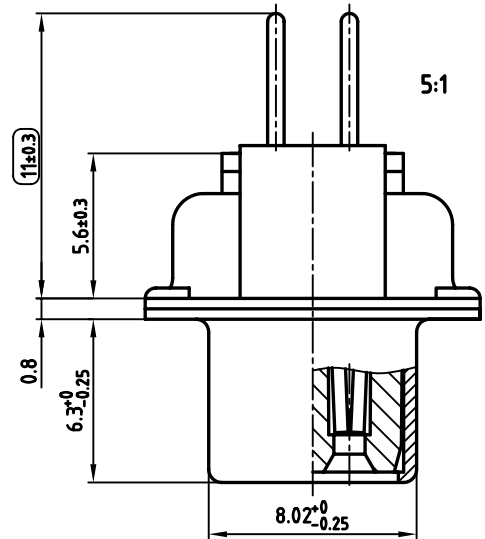
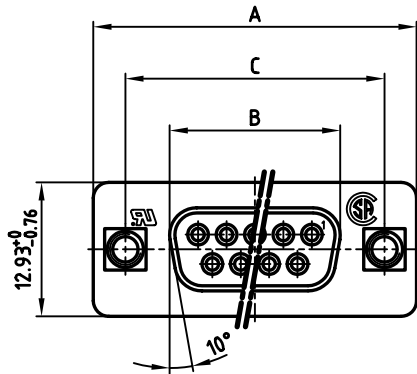


used for: D-SUB



No. of Pos.	A -0.76	B -0.25	C	Part No.
9	31.19	16.46	25.00 ^{+0.12} / _{-0.13}	164A12029X
15	39.52	24.79	33.30 ^{+0.15} / _{-0.1}	164A12039X
25	53.42	38.50	47.04 ±0.13	164A12049X
37	69.70	54.96	63.50 ±0.13	164A12059X

NOTES:

- METALSHELLS: STEEL; min. 320µ" TIN
- INSULATORS: PBT GF UL 94 V-0, BLACK
- CONTACTS: COPPER ALLOY
PLATING: 8µ" HARD GOLD OVER min. 50µ" NICKEL
- THREADED REAR SPACER: COPPER ALLOY; min. 200µ" TIN over 80µ" NICKEL
- SLEEVE: COPPER ALLOY; min. 200µ" TIN over 80µ" NICKEL
- P.C.B. HOLE DRILLINGS ON SHEET 2
- MAXIMUM TORQUE VALUE FOR THREAD: 6" LBS
- CONNECTOR IS PART MARKED: PART-NO. CONEC ABC
- = CHECK DIMENSION



APPROVAL * FREIGABE * DEBLOCAGE * AUTORIZACION * APPROVAL

CUSTOMER APPROVAL DATE:

NAME: TITLE:

COMPANY NAME:

APPROVAL * FREIGABE * DEBLOCAGE * AUTORIZACION * APPROVAL

THIS DRAWING MAY NOT BE COPIED OR REPRODUCED IN ANY WAY, AND MAY NOT BE PASSED ON TO A THIRD PARTY, WITHOUT WRITTEN PERMISSION. OWNERSHIP AND COPYRIGHT OF CONEC GmbH. DO NOT ALTER CAD DRAWING BY HAND

rev.	description	date	name

tolerance dim. in mm

2005	date	name
drawn	09.06.	Lehmenkühler
appd.	09.06.	Mickenbecker
norm	DIN 41652	
d-old		

CONEC

scale: 2:1 (5:1)

material: SEE NOTES

title: **D-SUB FEMALE**
9-37pos. SOLDER PIN STRAIGHT
with threaded rear spacer

dwg no: AutoCAD 2004

16K2A904

part no: SEE TABLE

DIN-A 3 sh:1/2

