

4

3

2

1


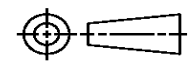
THIS DRAWING IS UNPUBLISHED. RELEASED FOR PUBLICATION
 © COPYRIGHT ALL RIGHTS RESERVED.

LOC	DIST	REVISIONS			
P	LTR	DESCRIPTION	DATE	DWN	APVD
	A4	ECR-15-012201	08SEP2015	GK	SD

REPLACED BY OCEAN STYLE APPLICATOR PART NUMBER 2266795-1

FOR REPLACEMENT PARTS FOR APPLICATOR 1530032
 REFER TO ADDITIONAL PAGE(S). SPARE PARTS KIT (IF LISTED)
 WILL REMAIN AVAILABLE.

THE REPLACEMENT OCEAN STYLE APPLICATOR HAS THE
 SAME TERMINATOR/PRESS INTERFACE AS APPLICATOR
 1530032

THIS DRAWING IS A CONTROLLED DOCUMENT.		DWN	GOPALAKRISHNA HV		 TE Connectivity
DIMENSIONS:		CHK	GOPALAKRISHNA HV		
		TOLERANCES UNLESS OTHERWISE SPECIFIED:		APVD	NAME
0 PLC ± 1 PLC ± 2 PLC ± 3 PLC ± 4 PLC ± ANGLES ±		MATERIAL		PRODUCT SPEC	SIDE FEED HDI APPLICATOR
FINISH		WEIGHT		APPLICATION SPEC	
		SIZE	CAGE CODE	DRAWING NO	RESTRICTED TO
		A3		©- 1530032	
		CUSTOMER DRAWING		SCALE	SHEET 1 OF 2 REV A4

PART NUMBER	REV	TERMINATOR	FEED TYPE	DESCRIPTION
1530032-1	A	LEADMAKER	MECH POST FEED	CUTS CARRIER
1530032-2	A	BENCH	MECH PRE FEED	CUTS CARRIER
1530032-6	A	LEADMAKER	MECH POST FEED	CONTINUOUS CARRIER
7-1530032-1	A	LEADMAKER	MECH POST FEED	-1 AND SPARE PARTS
7-1530032-2	A	BENCH	MECH PRE FEED	-2 AND SPARE PARTS
7-1530032-6	A	LEADMAKER	MECH POST FEED	-6 AND SPARE PARTS
7-1530032-7	A	-	-	SPARE PARTS KIT

CRIMP	SIZE	TYPE	RANGE
WIRE	2.39 [.094 IN]	F	0.50-0.80mm ²
INSUL	3.48 [.137 IN]	F	1.87mm-3.13mm

WIRE STRIP LENGTH
4.6mm-5.1mm

APPL INSTRUCTIONS
408-8322

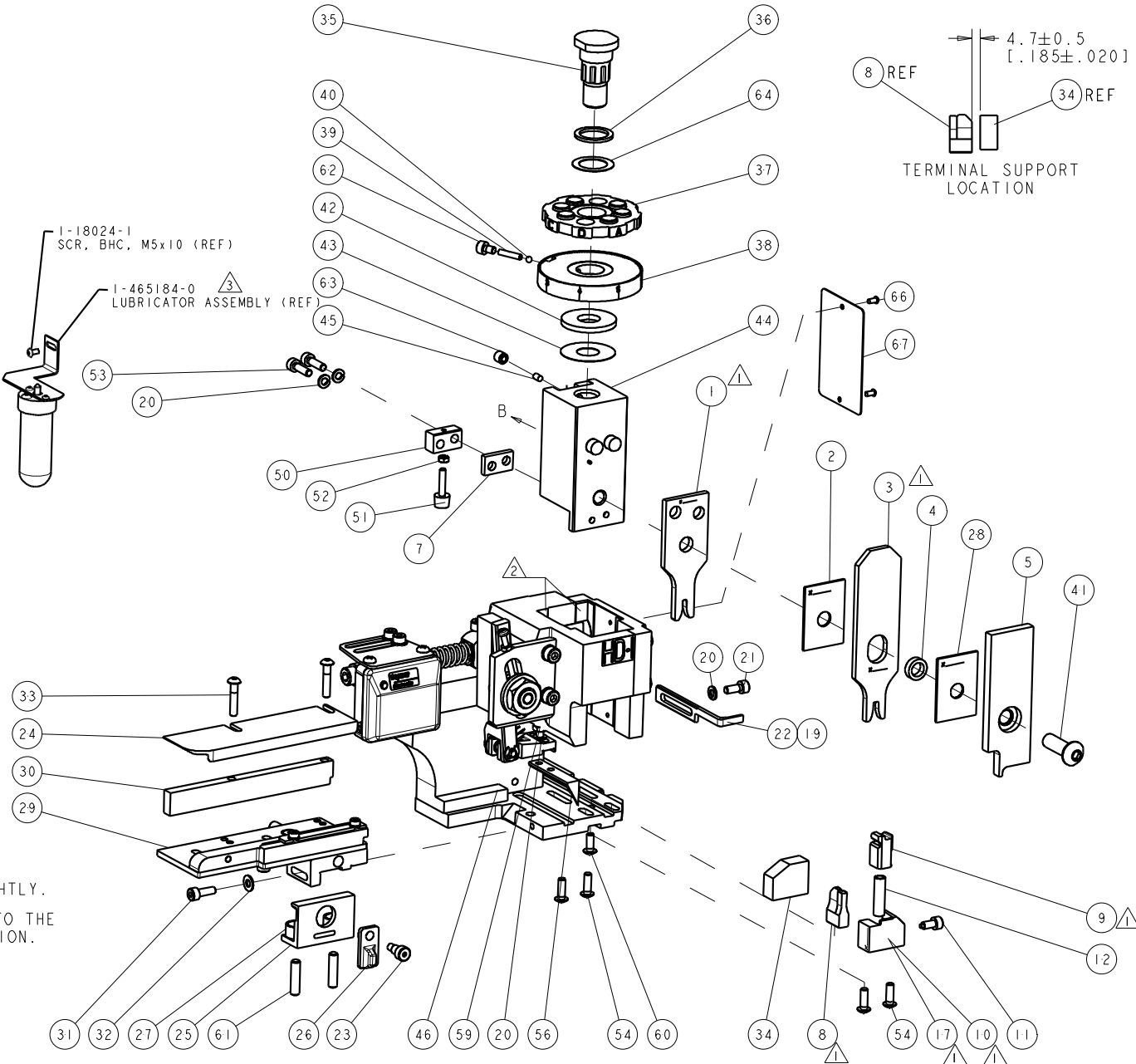
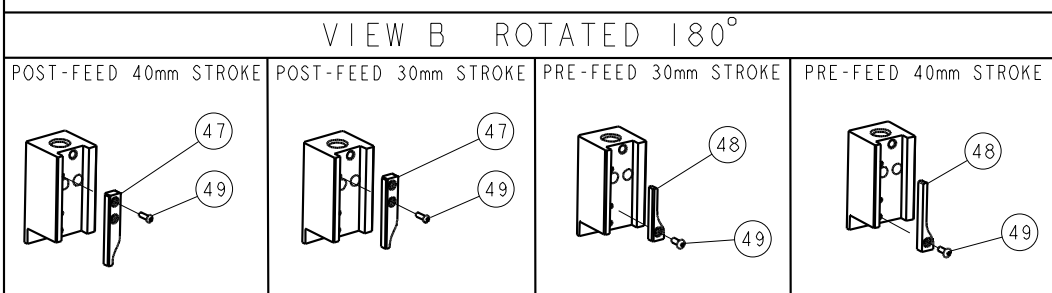
TERMINAL PACKARD
APPL SPEC -

FEED
17.50 [.689 IN]

TE PN	PACKARD PN
1949093-2	12020156
1949093-1	12015869
1949093-3	12015864

WIRE SIZE	CRIMP HEIGHT	PIN PN & LENGTH [IN]
1.00mm ²	1.55 ± 0.05 [.061 ± .002 IN]	9-354778-8 [.2985]
0.80mm ²	1.35 ± 0.05 [.053 ± .002 IN]	1-354779-9 [.3085]
0.50mm ²	1.30 ± 0.05 [.051 ± .002 IN]	2-354779-2 [.3100]

- RECOMMENDED SPARE PARTS.
- GREASE RAM, CAM, CAM FOLLOWER AND FEED ROD LIGHTLY.
- CERTAIN TERMINALS REQUIRE LUBRICATION. REFER TO THE APPLICATOR INSTRUCTION SHEET FOR MORE INFORMATION.
- LUBRICATE DAILY PER THE APPLICATOR INSTRUCTION SHEET SUPPLIED WITH THE APPLICATOR.
- 1.00mm WIRE IS NOT LISTED IN CABLE RANGE FOR THIS TERMINAL ON PACKARD SPEC BUT IS LISTED AS BEING TESTED AND CRIMPED BY PACKARD.



77	76	72	71	-6	-2	-1	PART NO	DESCRIPTION	ITEM NO
-	-	-	-	-	-	-	-	-	84
-	-	-	-	-	-	-	-	-	83
-	-	-	-	-	-	-	-	-	82
-	-	-	-	-	-	-	-	-	81
-	-	-	-	-	-	-	-	-	80
-	-	-	-	-	-	-	-	-	79
-	-	-	-	-	-	-	-	-	78
-	-	-	-	-	-	-	-	-	77
-	-	-	-	-	-	-	-	-	76
-	-	-	-	-	-	-	-	-	75
-	-	-	-	-	-	-	-	-	74

SET UP GAGE
458637-3

REV	DESCRIPTION	DATE	OWN	APPD
A	RELEASED	03DEC2008	LG	TE
A1	ECR-09-001435	29JAN2009	MY	TE
A2	CORRECTED VIEWABLE IN STARTEC	29JAN2009	MY	MY
A3	ECR-15-007470	19MAY2015	XZ	LZ

-	-	-	-	-	-	-	-	-	-	73
-	-	-	-	-	-	-	-	-	-	72
-	1	1	1	1	1	1	1338705-1	DOCUMENTATION PACKAGE	-	71
-	-	-	-	-	-	-	-	-	-	70
-	-	-	-	-	-	-	-	-	-	69
-	-	-	-	-	-	-	-	-	-	68
-	1	1	1	1	1	1	461264-1	PLATE, IDENTIFICATION	-	67
-	2	2	2	2	2	2	21017-2	SCREW, DRIVE	-	66
-	-	-	-	-	-	-	-	-	-	65
-	1	1	1	1	1	1	986950-1	WASHER, FLAT PRECISION	-	64
-	1	1	1	1	1	1	3-18031-0	SCR, SET, CUP POINT M6 X 6.0	-	63
-	1	1	1	1	1	1	18023-9	SCR, SKT HD CAP M4 X 6.0	-	62
-	2	2	2	2	2	2	2-18032-5	SCR, SET, FLT POINT M5 X 20.0	-	61
-	1	1	1	1	1	1	18024-7	SCR, BTN SKT HD CAP (M4 X 10.0)	-	60
-	1	1	1	1	1	1	5-18022-2	SCR, HEX HD CAP M4 X 8.0	-	59
-	-	-	-	-	-	-	-	-	-	58
-	-	-	-	-	-	-	-	-	-	57
-	1	1	1	1	1	1	1338685-1	PAWL, FEED	-	56
-	-	-	-	-	-	-	-	-	-	55
-	4	4	4	4	4	4	18024-8	SCR, BTN SKT HD CAP (M4 X 12.0)	-	54
-	2	2	2	2	2	2	9-18023-6	SCR, SKT HD CAP M4 X 14.0	-	53
-	1	1	1	1	1	1	18030-1	NUT, HEX, REG M3	-	52
-	1	1	1	1	1	1	811242-5	BUMPER, HOLD DOWN	-	51
-	1	1	1	1	1	1	690753-2	SPACER, TONKER	-	50
-	1	1	1	1	1	1	18024-3	SCR, BTN SKT HD CAP (M3 X 10.0)	-	49
-	-	-	-	-	-	-	-	-	-	48
-	1	1	1	1	1	1	1338675-1	CAM, UNIVERSAL PRE FEED	-	47
-	1	1	1	1	1	1	1338676-1	CAM, UNIVERSAL POST-FEED	-	46
-	1	1	1	1	1	1	1320999-3	APPLICATOR SUBASSEMBLY, HDI	-	45
-	1	1	1	1	1	1	690191-1	PLUG, NYLON	-	44
-	1	1	1	1	1	1	1338660-4	RAM	-	43
-	1	1	1	1	1	1	690125-1	SHIM SUB-ASSY	-	42
-	1	1	1	1	1	1	690124-1	WASHER, RAM (.115)	-	41
-	1	1	1	1	1	1	2-18024-6	SCR, BTN SKT HD CAP (M8 X 25.0)	-	40
-	1	1	1	1	1	1	23241-1	BALL, STEEL	-	39
-	1	1	1	1	1	1	2-22278-7	SPRING, COMPRESSION	-	38
-	1	1	1	1	1	1	1320922-4	DISC, ADJUST, INSULATION CRIMP	-	37
-	1	1	1	1	1	1	354777-1	WIRE DISC, ASSEMBLY	-	36
-	1	1	1	1	1	1	22480-5	SPRING, COMPRESSION	-	35
-	1	1	1	1	1	1	690212-1	POST, RAM	-	34
-	1	1	1	1	1	1	1320934-1	SUPPORT, TERMINAL	-	33
-	2	2	2	2	2	2	1-18024-0	SCR, BTN SKT HD CAP (M4 X 20.0)	-	32
-	1	1	1	1	1	1	18027-2	WASHER, FLAT, REG M4	-	31
-	1	1	1	1	1	1	1-18023-2	SCR, SKT HD CAP M4 X 12.0	-	30
-	1	1	1	1	1	1	1320908-6	SPACER, STRIP GUIDE	-	29
-	1	1	1	1	1	1	1633073-1	STRIP GUIDE ASSEMBLY	-	28
-	1	1	1	1	1	1	1-455888-0	SPACER, CRIMPER	-	27
-	2	2	2	2	2	2	1-22284-0	SPRING, COMPRESSION	-	26
-	1	1	1	1	1	1	356835-1	LEVER, DRAG RELEASE	-	25
-	1	1	1	1	1	1	240792-1	DRAG, TERMINAL	-	24
-	1	1	1	1	1	1	1320928-2	STRIP GUIDE	-	23
-	1	1	1	1	1	1	980371-4	SCR, SKT HD SHLDR 5.0 DIA X 6.0	-	22
-	1	1	1	1	1	1	690472-2	STRIPPER	-	21
-	1	1	1	1	1	1	1-18023-1	SCR, SKT HD CAP M4 X 10.0	-	20
-	4	4	4	4	4	4	18025-2	WASHER, SPRG LOCK, REG M4	-	19
-	-	-	-	-	-	-	-	-	-	18
-	1	1	1	1	1	1	1338684-1	SHEAR HOLDER, FRONT	-	17
-	-	-	-	-	-	-	-	-	-	16
-	-	-	-	-	-	-	-	-	-	15
-	-	-	-	-	-	-	-	-	-	14
-	-	-	-	-	-	-	-	-	-	13
-	1	1	1	1	1	1	3-22280-3	SPRING, COMPRESSION	-	12
-	1	1	1	1	1	1	356885-4	STOP, SHEAR	-	11
-	1	1	1	1	1	1	1320921-1	SHEAR HOLDER, FRONT, CUT	-	10
-	1	1	1	1	1	1	454276-1	FLOATING SHEAR, FRONT	-	9
-	1	2	2	2	1	1	1-1633703-8	ANVIL, COMBINATION	-	8
-	1	1	1	1	1	1	240641-5	SPACER	-	7
-	-	-	-	-	-	-	-	-	-	6
-	1	1	1	1	1	1	1-455889-4	DEPRESSOR, SHEAR	-	5
-	1	1	1	1	1	1	3-238011-1	BLOCK, CRIMPER SPACER	-	4
-	1	2	2	2	1	1	7-1213077-6	CRIMPER, INSULATION PREMIUM	-	3
-	1	1	1	1	1	1	1-455888-0	SPACER, CRIMPER	-	2
-	1	2	2	1	1	1	4-1490019-1	CRIMPER, WIRE PREMIUM	-	1

TE Connectivity
Harrisburg, PA 17105-3608

STE

SIDE FEED HDI APPLICATOR

SIZE: A1 CAGE CODE: 00779 DRAWING NO: 1530032 RESTRICTED TO: A3

SCALE: 3:5 SHEET: 1 OF 1 REV: A3