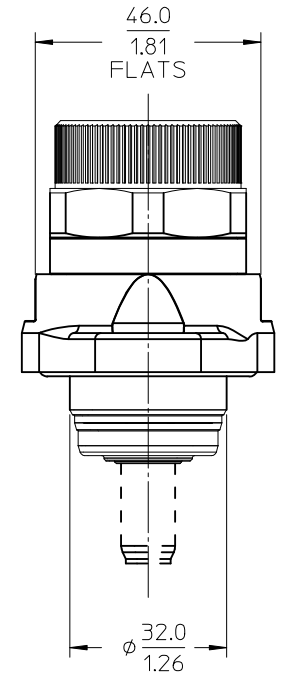
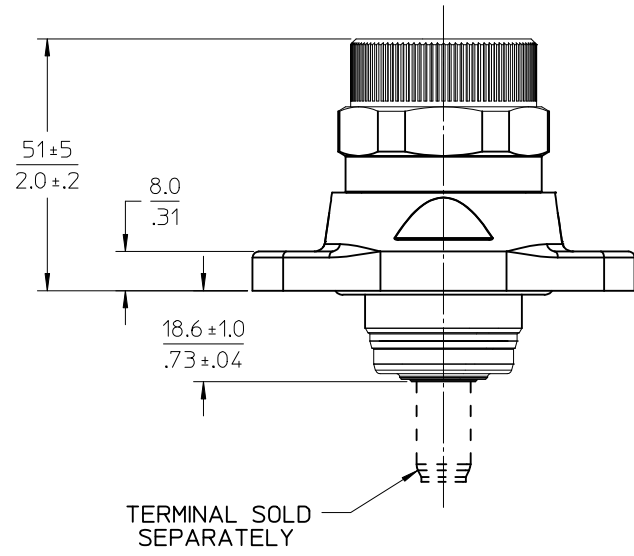
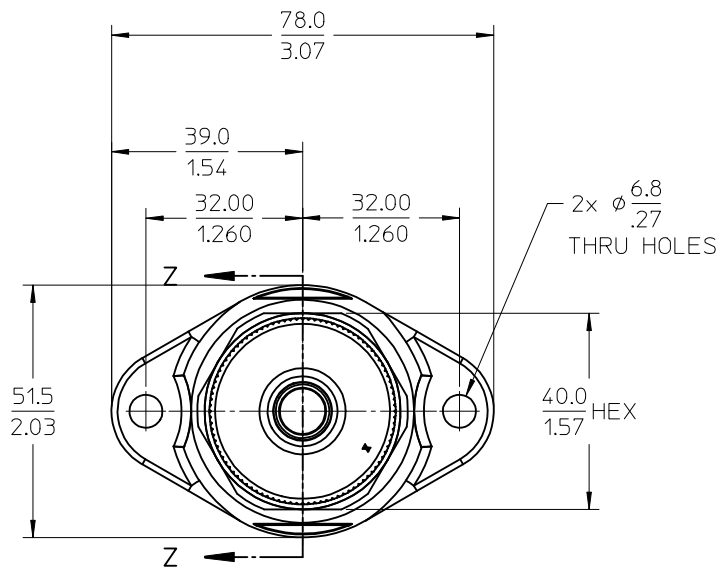


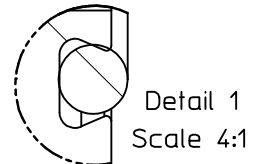
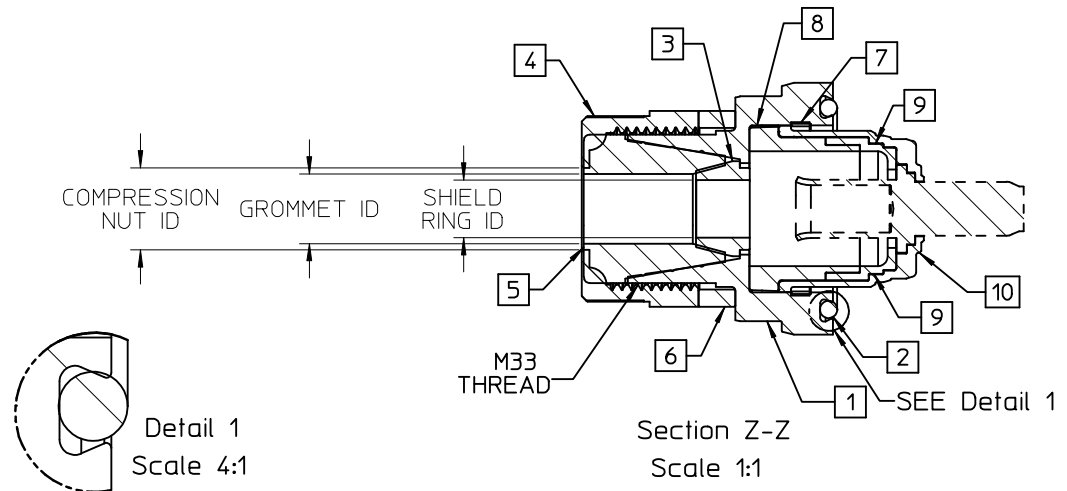
| 10 | 9 | 8 | 7 | 6 | 5 | 4 | 3 | 2 | 1 |
|--------------------------|-----------------------|----------|----------|----------|----------|----------|-------------------------|---|---|
| SINGLE ASSEMBLY PART NO. | KIT ASSEMBLY PART NO. | WIRE AWG | GROMMET | COLOR | O-RING | COLOR | CABLE SEALING RANGE | | |
| 1301990075 | 1301990175 | 1 | HNBR | BLACK | HNBR | BLACK | 11.10/.437 - 14.27/.562 | | |
| 1301990070 | 1301990170 | 1/0 | HNBR | BLACK | HNBR | BLACK | 14.27/.562 - 15.88/.625 | | |
| 1301990065 | 1301990165 | 2/0 | HNBR | BLACK | HNBR | BLACK | 15.88/.625 - 17.45/.687 | | |
| 1301990275 | 1301990375 | 1 | SILICONE | RUST RED | SILICONE | RUST RED | 11.10/.437 - 14.27/.562 | | |
| 1301990270 | 1301990370 | 1/0 | SILICONE | RUST RED | SILICONE | RUST RED | 14.27/.562 - 15.88/.625 | | |
| 1301990265 | 1301990365 | 2/0 | SILICONE | RUST RED | SILICONE | RUST RED | 15.88/.625 - 17.45/.687 | | |



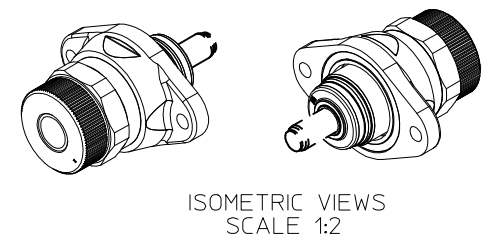
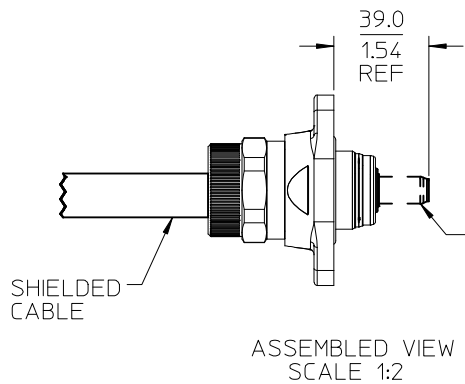
NOTES:
 1. MATERIALS:
 GRIP BODY: ALUMINUM ALLOY
 FINISH: ELECTROLESS NICKEL PLATING
 COMPRESSION NUT: ALUMINUM ALLOY
 FINISH: ELECTROLESS NICKEL PLATING
 SHIELD RING: ALUMINUM ALLOY
 FINISH: ELECTROLESS NICKEL PLATING
 STOP RING: ALUMINUM ALLOY
 FINISH: ELECTROLESS NICKEL PLATING
 GROMMET: SEE CHART
 HNBR HARDNESS: SHORE 70A DUROMETER
 SILICONE HARDNESS: SHORE 70A DUROMETER
 O-RING: SEE CHART
 HNBR HARDNESS: SHORE 90A DUROMETER
 SILICONE HARDNESS: SHORE 70A DUROMETER
 INSULATING RETAINER SUB-ASSEMBLY: PBT
 COLOR: BLACK, FLAMMABILITY: UL94 V-0
 RETAINING RING: CARBON STEEL
 2. PRODUCT SPECIFICATION: TBD
 3. PACKAGING SPECIFICATION: PK-130199-001 & PK-130199-003
 4. ASSEMBLY SPECIFICATION: AS-130199-005
 5. ALL MATERIALS ARE ROHS COMPLIANT.

| UPDATE TOLS, DIMS, AND NOTES EC NO: IPG2016-0883 TIDRW:WLEUNG 2015/12/29 CHKD:GSUDHINI 2015/12/29 APPR:APATEL 2016/03/10 | QUALITY SYMBOLS | GENERAL TOLERANCES (UNLESS SPECIFIED) | DIMENSION STYLE | SCALE | DESIGN UNITS | THIRD ANGLE PROJECTION | | | | | | | | | | | | | | | | | | |
|--|---|---|---|--|---------------|------------------------|-------|-------|----------|-------|--------|----------|--------|-------|---------|-------|-------|---------|-------|-------|-------|-----|--------|--|
| | $\nabla = 0$ $\nabla = 0$ $\nabla = 0$ | <table border="1"> <thead> <tr> <th></th> <th>mm</th> <th>INCH</th> </tr> </thead> <tbody> <tr> <td>4 PLACES</td> <td>± ---</td> <td>± ---</td> </tr> <tr> <td>3 PLACES</td> <td>± ---</td> <td>± .015</td> </tr> <tr> <td>2 PLACES</td> <td>± 0.40</td> <td>± .03</td> </tr> <tr> <td>1 PLACE</td> <td>± 0.8</td> <td>± ---</td> </tr> <tr> <td>0 PLACE</td> <td>± ---</td> <td>± ---</td> </tr> </tbody> </table> | | mm | INCH | 4 PLACES | ± --- | ± --- | 3 PLACES | ± --- | ± .015 | 2 PLACES | ± 0.40 | ± .03 | 1 PLACE | ± 0.8 | ± --- | 0 PLACE | ± --- | ± --- | MM/IN | 1:1 | METRIC | |
| | | mm | INCH | | | | | | | | | | | | | | | | | | | | | |
| | 4 PLACES | ± --- | ± --- | | | | | | | | | | | | | | | | | | | | | |
| 3 PLACES | ± --- | ± .015 | | | | | | | | | | | | | | | | | | | | | | |
| 2 PLACES | ± 0.40 | ± .03 | | | | | | | | | | | | | | | | | | | | | | |
| 1 PLACE | ± 0.8 | ± --- | | | | | | | | | | | | | | | | | | | | | | |
| 0 PLACE | ± --- | ± --- | | | | | | | | | | | | | | | | | | | | | | |
| DESCRIPTION | ANGULAR ± 3° DRAFT WHERE APPLICABLE MUST REMAIN WITHIN DIMENSIONS | DRAWN BY DATE WLEUNG 2014/07/15 CHECKED BY DATE BRUPERT 2014/07/15 APPROVED BY DATE BWOODMAN 2014/08/19 | TITLE | PLUGGABLE MAX-LOC PLUS SHIELDED CORD GRIP ASSEMBLY, CRIMP, M33 THD molex | | | | | | | | | | | | | | | | | | | | |
| REV | | MATERIAL NO. | SEE CHART | DOCUMENT NO. | SD-130199-008 | SHEET NO. 1 OF 2 | | | | | | | | | | | | | | | | | | |
| | | SIZE B | THIS DRAWING CONTAINS INFORMATION THAT IS PROPRIETARY TO MOLEX INCORPORATED AND SHOULD NOT BE USED WITHOUT WRITTEN PERMISSION | | | | | | | | | | | | | | | | | | | | | |

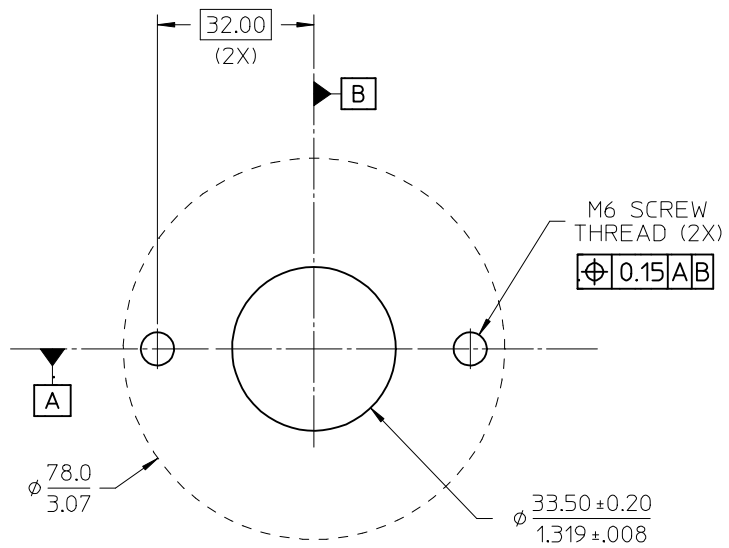
| ITEM NO. | DESCRIPTION |
|----------|---|
| 1 | GRIP BODY, M33 THREAD |
| 2 | O-RING, AS-568-222 |
| 3 | SHIELD RING (1 AWG & 35MM ²), 14.6MM/0.57" ID |
| | SHIELD RING (1/0 AWG), 15.6MM/0.62" ID |
| | SHIELD RING (2/0 AWG), 18.9MM/0.74" ID |
| 4 | COMPRESSION NUT (1AWG & 35MM ²), 16.8MM/.66" ID |
| | COMPRESSION NUT (1/0AWG), 18.40MM/.73" ID |
| | COMPRESSION NUT (2/0AWG), 20.0MM/.79" ID |
| 5 | GROMMET (1 AWG & 35MM ²), 14.3MM/.56" ID |
| | GROMMET (1/0 AWG), 15.9/.63" ID |
| | GROMMET (2/0 AWG), 17.5MM/.69" ID |
| 6 | STOP RING, 33MM ID, 7.5MM THICK |
| 7 | RETAINING RING |
| 8 | INSULATING RETAINER, MAIN, FOR CRIMP TERMINAL |
| 9 | INSULATING RETAINER, CLIP, FOR CRIMP TERMINAL (X2) |
| 10 | INSULATING RETAINER, CAP, FOR CRIMP TERMINAL |



DUAL DOVETAIL
O-RING GROOVE



MOLEX IMPERIUM PLUS
CRIMP MALE TERMINAL
P/N 171423-XXXX
(TERMINAL SOLD SEPARATELY)



SEAL SURFACE ZONE
WITHIN $\phi 78.0$ AREA:
SURFACE FINISH REQUIRED $\nabla 3.2/$
FLATNESS REQUIRED $\square 0.2$

RECOMMENDED PANEL
MOUNT OPENING

| | | | | | | |
|--|-----------------------|--|-------------------|-------|--------------|--|
| UPDATE PANEL MOUNT, ADD O-RING GRV EC NO: IPGZ016-0883 2015/12/09 DRW:WLEUNG CHK:GSUDHINI APPR:APATEL 2015/12/29 2016/03/10 | QUALITY SYMBOLS | GENERAL TOLERANCES (UNLESS SPECIFIED) | DIMENSION STYLE | SCALE | DESIGN UNITS | THIRD ANGLE PROJECTION |
| | $\nabla = 0$ | mm INCH | MM/IN | 1:2 | METRIC | |
| | $\nabla = 0$ | 4 PLACES ± --- ± --- | DRAWN BY DATE | | | |
| | $\nabla = 0$ | 3 PLACES ± --- ± .015 | WLEUNG 2014/07/15 | | | |
| | 2 PLACES ± 0.40 ± .03 | CHECKED BY DATE | | | | PLUGGABLE MAX-LOC PLUS SHIELDED CORD GRIP ASSEMBLY, CRIMP, M33 THD |
| | 1 PLACE ± 0.8 ± --- | BRUPERT 2014/07/15 | | | | |
| | 0 PLACE ± --- ± --- | APPROVED BY DATE | | | | molex DOCUMENT NO. SD-130199-008 SHEET NO. 2 OF 2 |
| | | BWOODMAN 2014/08/19 | | | | |
| | | ANGULAR ± 3° DRAFT WHERE APPLICABLE MUST REMAIN WITHIN DIMENSIONS | MATERIAL NO. | | | |
| | | | SEE CHART | | | |
| | | | SIZE B | | | |