

# TD4700 SERIES DETECTOR SWITCH

ANTI-VANDAL SWITCHES  
 DETECTOR SWITCHES  
 DIP SWITCHES  
 KEYLOCK SWITCHES  
 NAVIGATION SWITCHES  
 PUSHBUTTON SWITCHES  
 ROCKER SWITCHES  
 ROTARY SWITCHES  
 SLIDE SWITCHES  
 SNAP ACTION SWITCHES  
 TACTILE SWITCHES  
 TOGGLE SWITCHES  
 CAP OPTIONS



## APPLICATIONS / MARKETS



Computer Peripherals



Consumer Electronics



Testing Equipment



Handheld Devices



Gaming and Computer



Medical Equipment

**RoHS**

## SPECIFICATIONS

**Electrical Rating:** 1mA, 5VDC  
**Life Expectancy:** 100,000 Cycles  
**Contact Resistance:** 2Ω Max.Initial  
**Insulation Resistance:** 100MΩ Min. @ 100VDC  
**Dielectric Strength:** 100VAC for 1 minute  
**Operating Temperature:** -40°C to 85°C  
**Storage Temperature:** -20°C to 70°C  
**Travel:** 2.2mm  
**Contact Arrangement:** SPST  
**Actuation Force:** 50 grams max

## FEATURES & BENEFITS

- Ultraminiature
- Ultra-low profile
- Guiding post offers easy orientation

## PART NUMBER CONFIGURATOR

<b>Series</b>	<b>Mounting Bosses</b>	<b>Plating</b>
<input type="text" value="T"/> <input type="text" value="D"/> <input type="text" value="4"/> <input type="text" value="7"/> <input type="text" value="0"/> <input type="text" value="0"/>	<input type="text" value="A"/>	<input type="text" value="Q"/>
TD4700	A - Without Bosses B - With Bosses	Q - Silver

*Specifications subject to change without notice 4.11.2022*



**E-SWITCH®**

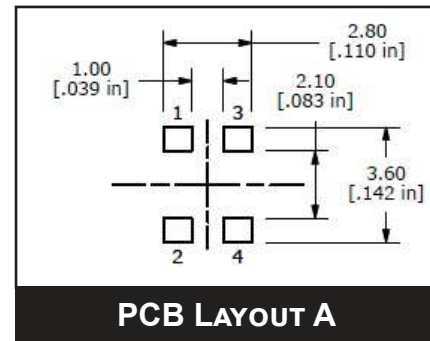
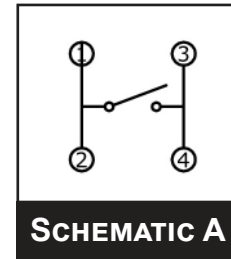
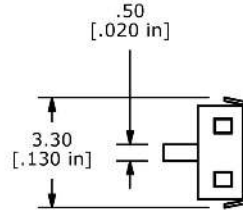
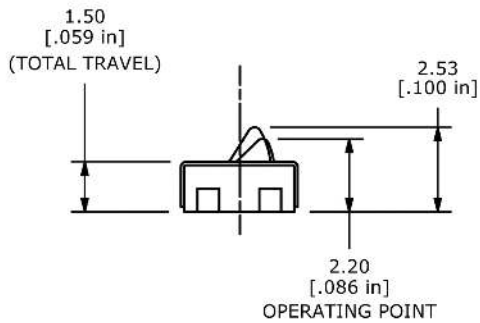
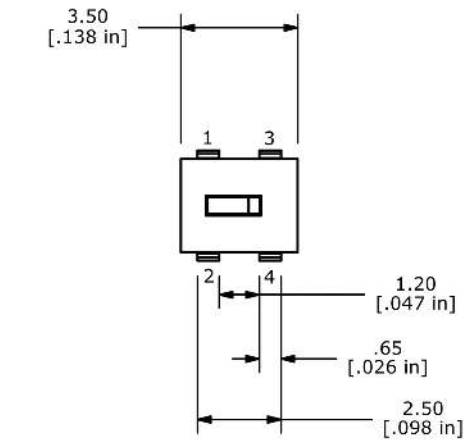
www.e-switch.com

800.867.2717

1

# TD4700 SERIES DETECTOR SWITCH

## A = Without Bosses



## B = With Bosses

