

MATERIALS AND FINISHES:

BODY, JAM NUT: BRASS  
PLATED BRIGHT TIN OVER NICKEL

RETAINING CLIPS: BECU

CENTER CONTACT: PHOS BRONZE  
PLATED GOLD (30μ-in MIN) OVER  
NICKEL (100μ-in MIN) IN CONTACT AREA

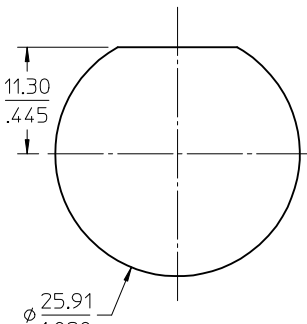
INSULATOR: PBT 30% GF (BLACK)

RIVETS: STAINLESS STEEL  
PASSIVATED

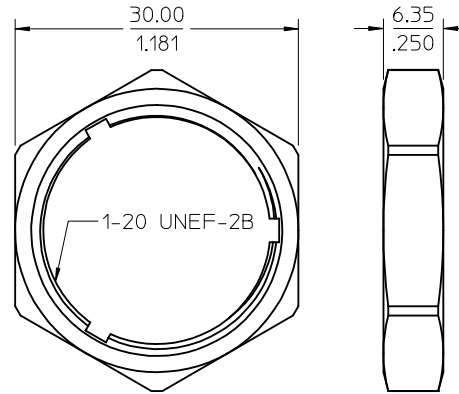
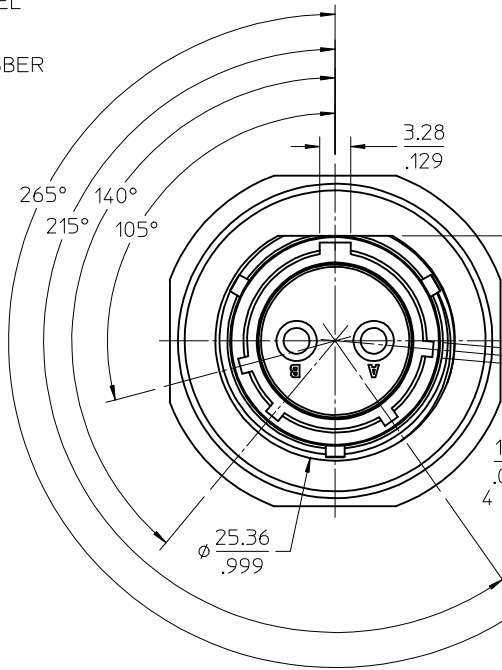
RETAINING RING: CARBON STEEL

O-RING/GASKET: SILICONE RUBBER

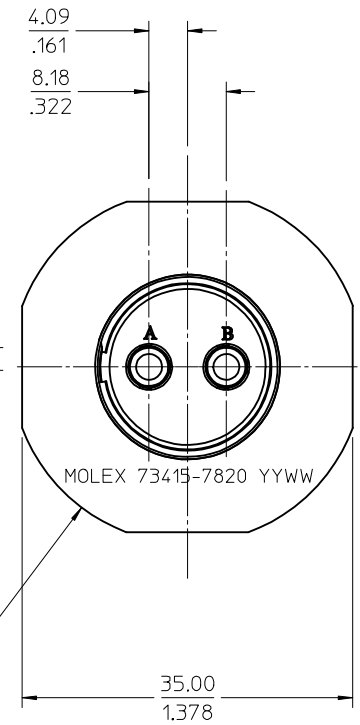
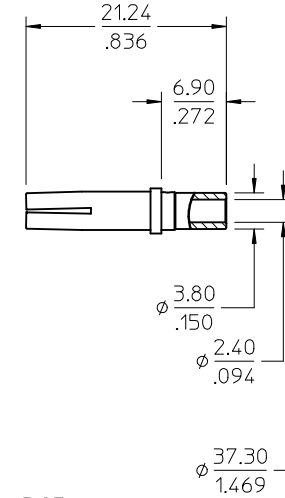
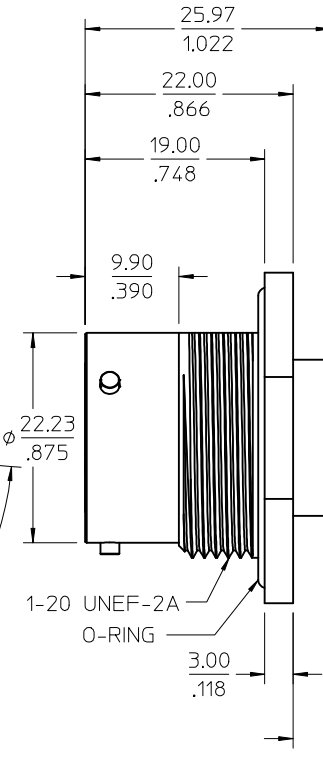
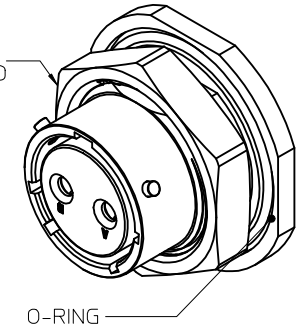
DUST CAP: PE (ESD)



PANEL CUT-OUT  
2.75mm MAX  
THICKNESS



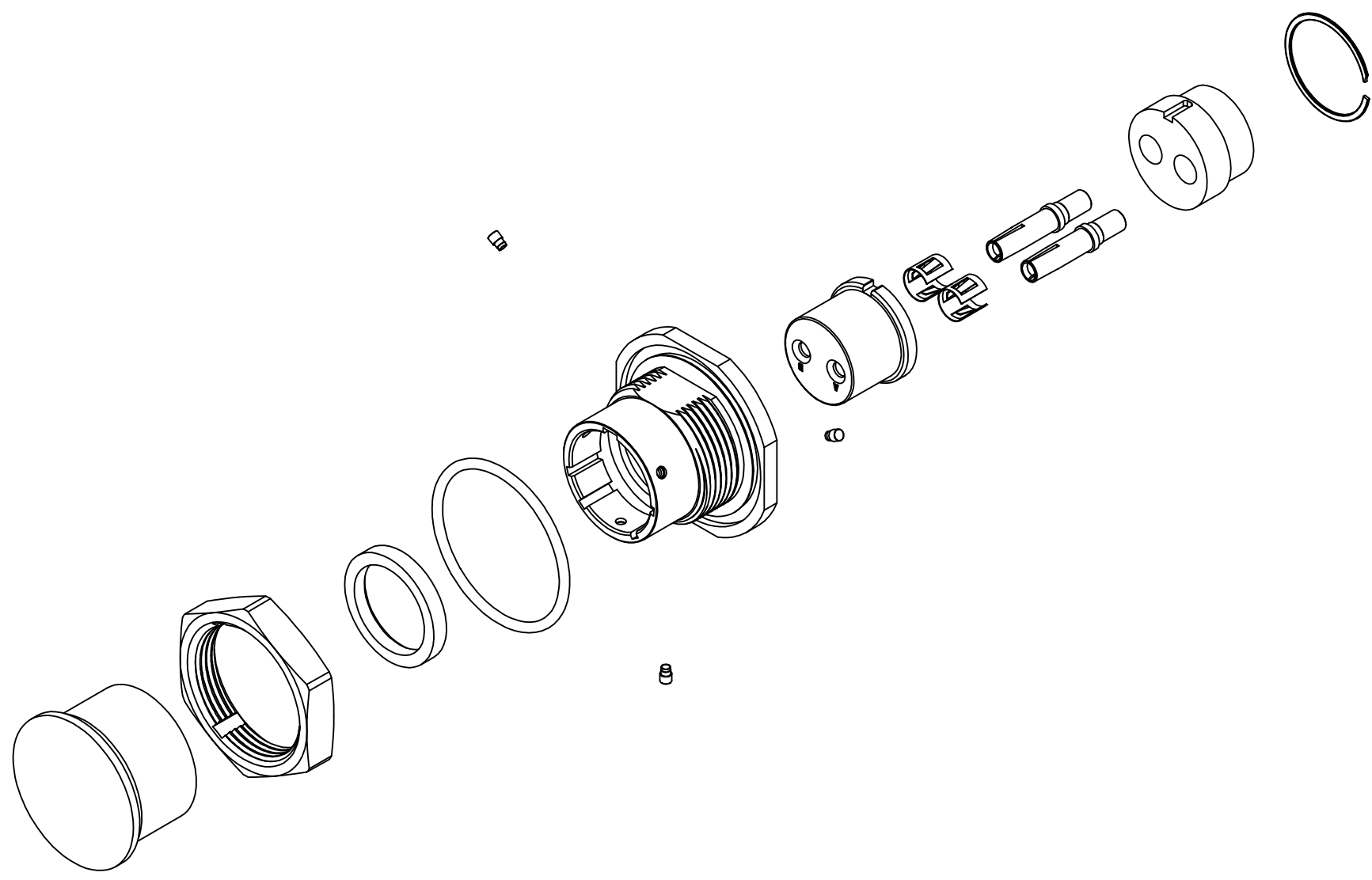
JAM NUT  
WILL BE MOUNTED  
TO CONNECTOR



SEE SHEET 2 FOR EXPLODED VIEW

73415-7821	OMIT	OMIT
73415-7820	INCLUDED	INCLUDED
PART NO.	CONTACTS	CAP

<p>CHG: UPDATE THE DESCRIPTION EWR RF-15-E208 EC NO: URF-2015-0650 2015/05/21 DRW: SH001 CHKD: APPR: YCHENG 2015/06/01</p>	QUALITY SYMBOLS	GENERAL TOLERANCES (UNLESS SPECIFIED)	DIMENSION STYLE	SCALE	DESIGN UNITS	THIRD ANGLE PROJECTION															
	<p>▽=0 ▽=0</p>	<table border="1"> <tr> <th></th> <th>mm</th> <th>INCH</th> </tr> <tr> <td>4 PLACES</td> <td>± .005</td> <td>± .0005</td> </tr> <tr> <td>3 PLACES</td> <td>± .005</td> <td>± .0005</td> </tr> <tr> <td>2 PLACES</td> <td>± .005</td> <td>± .0005</td> </tr> <tr> <td>1 PLACE</td> <td>± .005</td> <td>± .0005</td> </tr> </table>		mm	INCH	4 PLACES	± .005	± .0005	3 PLACES	± .005	± .0005	2 PLACES	± .005	± .0005	1 PLACE	± .005	± .0005	MM/IN	METRIC	<p>DRAWN BY: AROBERTSON DATE: 2011/07/25 CHECKED BY: SSS DATE: 2011/07/25 APPROVED BY: JWIENER DATE: 2012/02/10</p>	<p>TITLE: POWER CONNECTOR 2 FEMALE PIN PANEL MOUNT POWER-J, EWR-4755</p>
		mm	INCH																		
	4 PLACES	± .005	± .0005																		
3 PLACES	± .005	± .0005																			
2 PLACES	± .005	± .0005																			
1 PLACE	± .005	± .0005																			
<p>ANGULAR ± 2°</p>	<p>DRAFT WHERE APPLICABLE MUST REMAIN WITHIN DIMENSIONS</p>	<p>MATERIAL NO. 734157820</p>	<p>DOCUMENT NO. SD-73415-782</p>	<p>SHEET NO. 1 OF 2</p>																	
<p>SIZE C</p>	<p>THIS DRAWING CONTAINS INFORMATION THAT IS PROPRIETARY TO MOLEX INCORPORATED AND SHOULD NOT BE USED WITHOUT WRITTEN PERMISSION</p>	<p>MOLEX MOLEX INCORPORATED</p>																			



CHG: SEE SHEET 1	QUALITY SYMBOLS
EC NO: URF2015-0650	▽=0
DRWN:SH001	▽=0
CHKD:	
APPR:YCHENG	
REV: A3	
DESCRIPTION: 2015/06/01	

GENERAL TOLERANCES (UNLESS SPECIFIED)	
	mm INCH
4 PLACES ±	±
3 PLACES ±	±
2 PLACES ±	±
1 PLACE ±	±
ANGULAR ± 2 °	
DRAFT WHERE APPLICABLE MUST REMAIN WITHIN DIMENSIONS	

DIMENSION STYLE	
MM/IN	
DRAWN BY	DATE
AROBERTSON	2011/07/25
CHECKED BY	DATE
SSS	2011/07/25
APPROVED BY	DATE
JWIENER	2012/02/10
MATERIAL NO.	
SEE SHEET 1	
SIZE	
C	

SCALE	DESIGN UNITS	THIRD ANGLE PROJECTION
	METRIC	
TITLE		
POWER CONNECTOR		
2 FEMALE PIN PANEL MOUNT		
POWER-J, EWR-4755		
MOLEX INCORPORATED		SHEET NO.
DOCUMENT NO.		2 OF 2
SD-73415-782		
THIS DRAWING CONTAINS INFORMATION THAT IS PROPRIETARY TO MOLEX INCORPORATED AND SHOULD NOT BE USED WITHOUT WRITTEN PERMISSION		