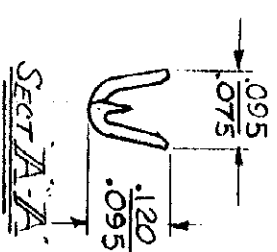
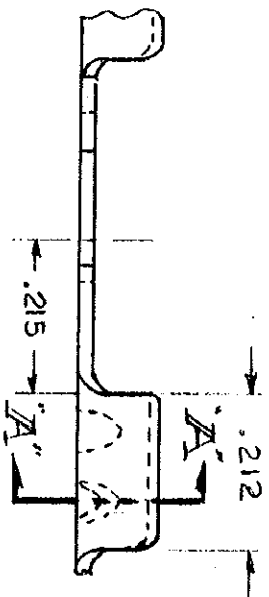
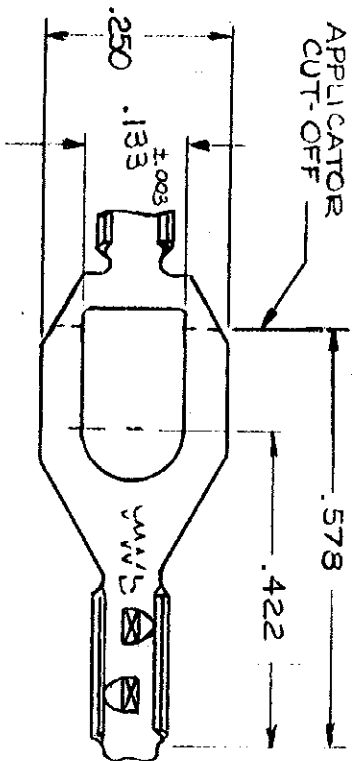


NUMBER
61498



CONTINUOUS STRIP ON REELS

MATERIAL & FINISH	TERMINAL NUMBER
.016-BRASS - NONE	61498-1
.016-BRASS - TIN	61498-2
.016-BRASS - PRE-TIN	61498-3

DIMENSIONS IN INCHES. DO NOT SCALE PRINT.

REVISION	DATE	BY	CHK
A	11/17	WV	WV
B	11/17	WV	WV
C	11/17	WV	WV
D	11/17	WV	WV
E	11/17	WV	WV
F	11/17	WV	WV
G	11/17	WV	WV
H	11/17	WV	WV
I	11/17	WV	WV
J	11/17	WV	WV
K	11/17	WV	WV
L	11/17	WV	WV
M	11/17	WV	WV
N	11/17	WV	WV
O	11/17	WV	WV
P	11/17	WV	WV
Q	11/17	WV	WV
R	11/17	WV	WV
S	11/17	WV	WV
T	11/17	WV	WV
U	11/17	WV	WV
V	11/17	WV	WV
W	11/17	WV	WV
X	11/17	WV	WV
Y	11/17	WV	WV
Z	11/17	WV	WV

©1968 BY AMP INCORPORATED. ALL RIGHTS RESERVED. AMP PRODUCTS COVERED BY PATENTS AND/OR PATENTS PENDING.

CUSTOMER COPY
REFERENCE ONLY



AMP INCORPORATED
HARRISBURG, PENNA.

WIRE RANGE — INSULATION
#26-#22 AWG .035-.040
TOLERANCE EXCEPT AS NOTED ± 1° 0'

CLASS _____
TYPE _____
LOC. NO. _____
A 61498 C
INSULATION PIERCING