



## Thread Drive Pack

SKU: 110990020

(images/product/Drive Pack.jpg)

### Description

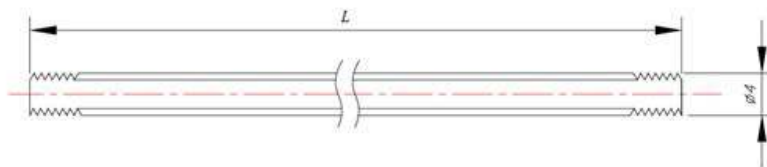
This pack included two Fully Threaded Rods, two Linear Motion Shaft, a Universal Joint and a Thread Drive Beam.

#### 1. Fully Threaded Rod M4x192mm/M4x280mm

##### Features:

- Made of steel, zinc plated.
- Length: 192mm/280mm

##### Size Charts(mm):



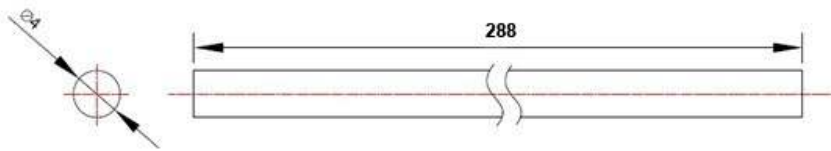
#### 2. Linear Motion Shaft 4x288mm

##### Features:

- Made of tainless Steel
- Can drill into 4mm holes. Compatible with Thread Drive Beam

- Length: 288mm

#### Size Charts(mm):

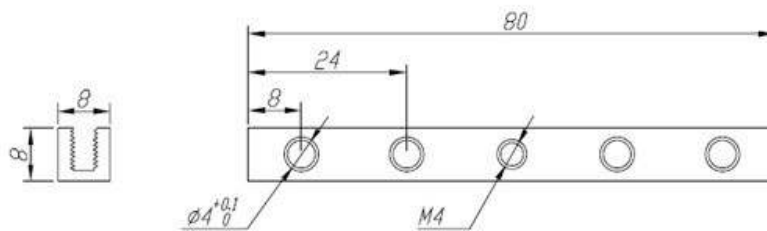


### 3.Thread Drive Beam

#### Features:

- Made from 6061 aluminum extrusion, anodized surface. Excellent strength and twist resistance.
- With thread hole in the middle that compatible with the Fully Threaded Rod.
- Other holes without thread can be drilled for 4mm shaft.
- Threaded slot enables easy and flexible connection.
- Cross-sectional area 8x8mm, length 80mm.

#### Size Charts(mm):

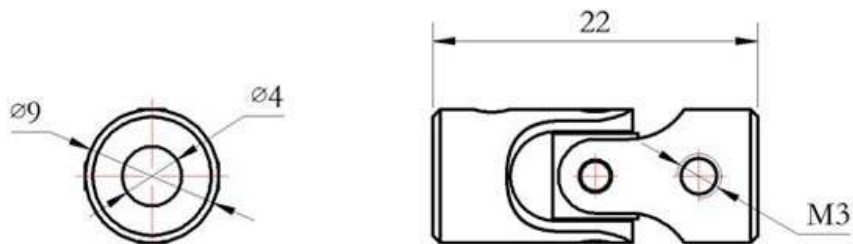


### 4. Universal Joint 4x4mm

#### Features:

- Material: stainless steel
- Max deflection angle: 45°
- Size: D9\* $\varnothing 4$ \* $\varnothing 4$ \*M3\*L22mm
- 2 Headless Set Screw included

#### Size Charts(mm):



#### Part list:

- 1x Fully Threaded Rod M4x192mm
- 1x Fully Threaded Rod M4x280mm
- 2x Linear Motion Shaft 4x288mm
- 1x Thread Drive Beam
- 1x Universal Joint 4x4mm
- 2x Headless Set Screw M3x5

**Support**

If you have any further question for technical support, please contact [waker@makeblock.cc](mailto:waker@makeblock.cc) (<mailto:waker@makeblock.cc>) or visit forum (<http://forum.makeblock.cc/category/makeblock-products>) of Makeblock.