

**MATERIALS AND FINISHES:**

**BODY: ZINC ALLOY**  
**PLATED: NICKEL (70 μ-in MIN) OVER COPPER (30 μ-in MIN)**

**CENTER CONTACT: PHOSPHOR BRONZE**  
**PLATED: GOLD (1 μ-in MIN) OVER NICKEL (50 μ-in MIN)**  
**OVER TIN (150 μ-in MIN)**

**INSULATOR: POLYPROPYLENE**

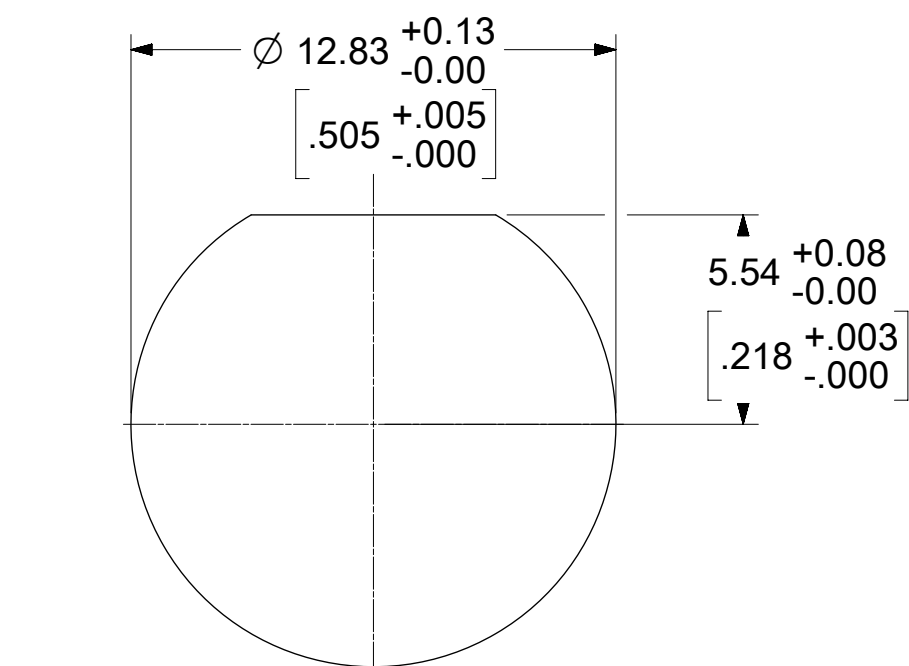
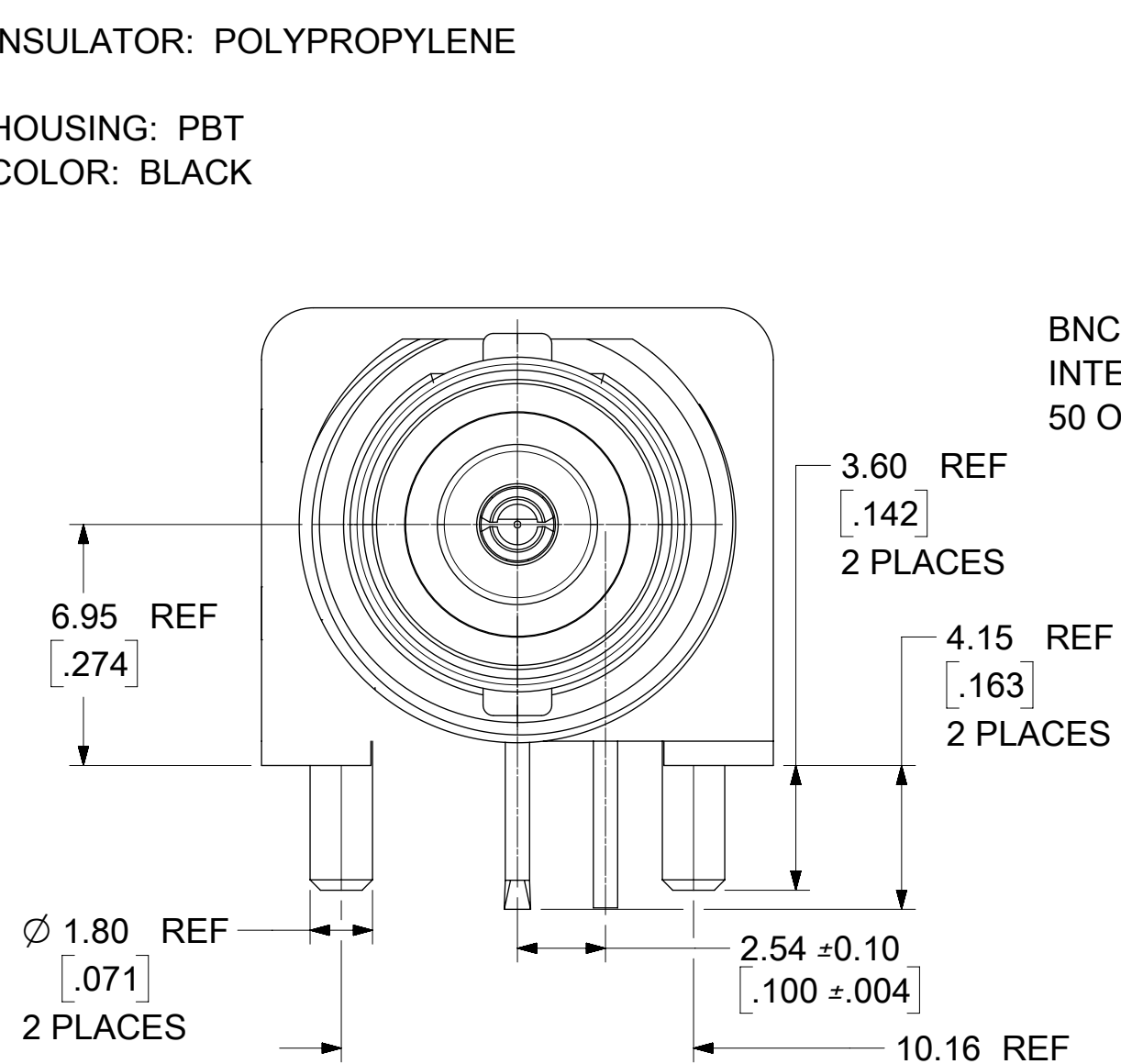
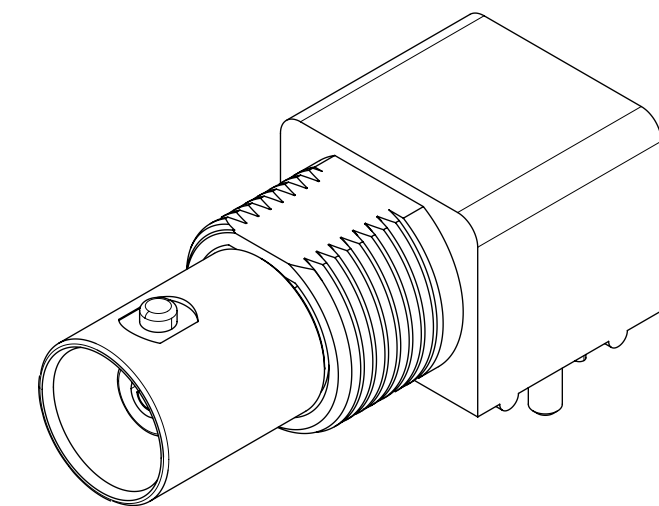
**HOUSING: PBT**  
**COLOR: BLACK**

**MOUNTED POST: BRASS**  
**PLATED: TIN (150 μ-in MIN) OVER NICKEL (50 μ-in MIN)**

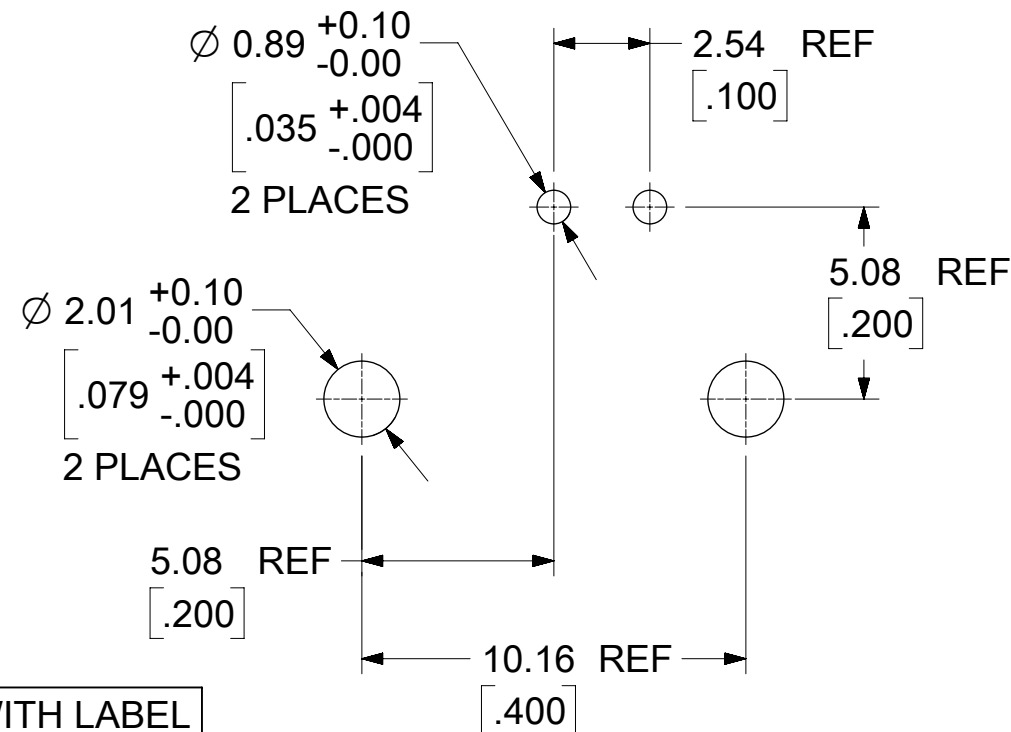
**LOCKWASHER: PHOSPHOR BRONZE**  
**PLATED: NICKEL (70 μ-in MIN) OVER COPPER (30 μ-in MIN)**

**SOLDER TAIL: STEEL WIRE**  
**PLATED: TIN (100 μ-in MIN) OVER NICKEL (100 μ-in MIN)**  
**OVER COPPER (20 μ-in MIN)**

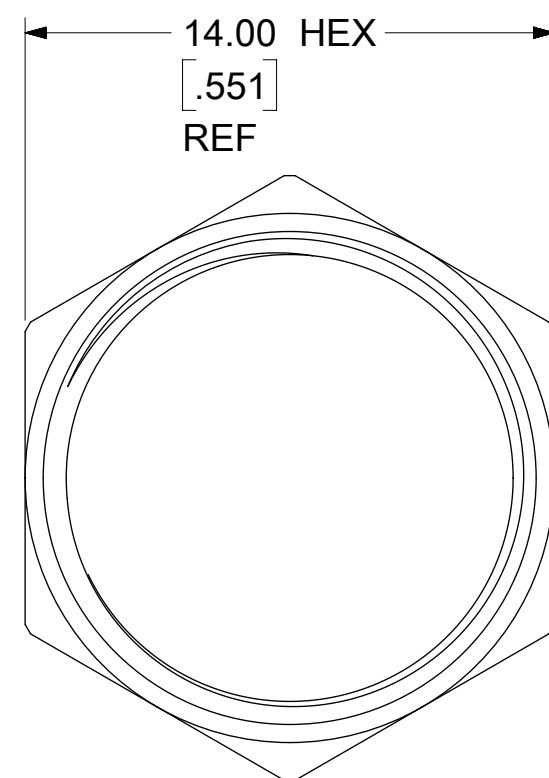
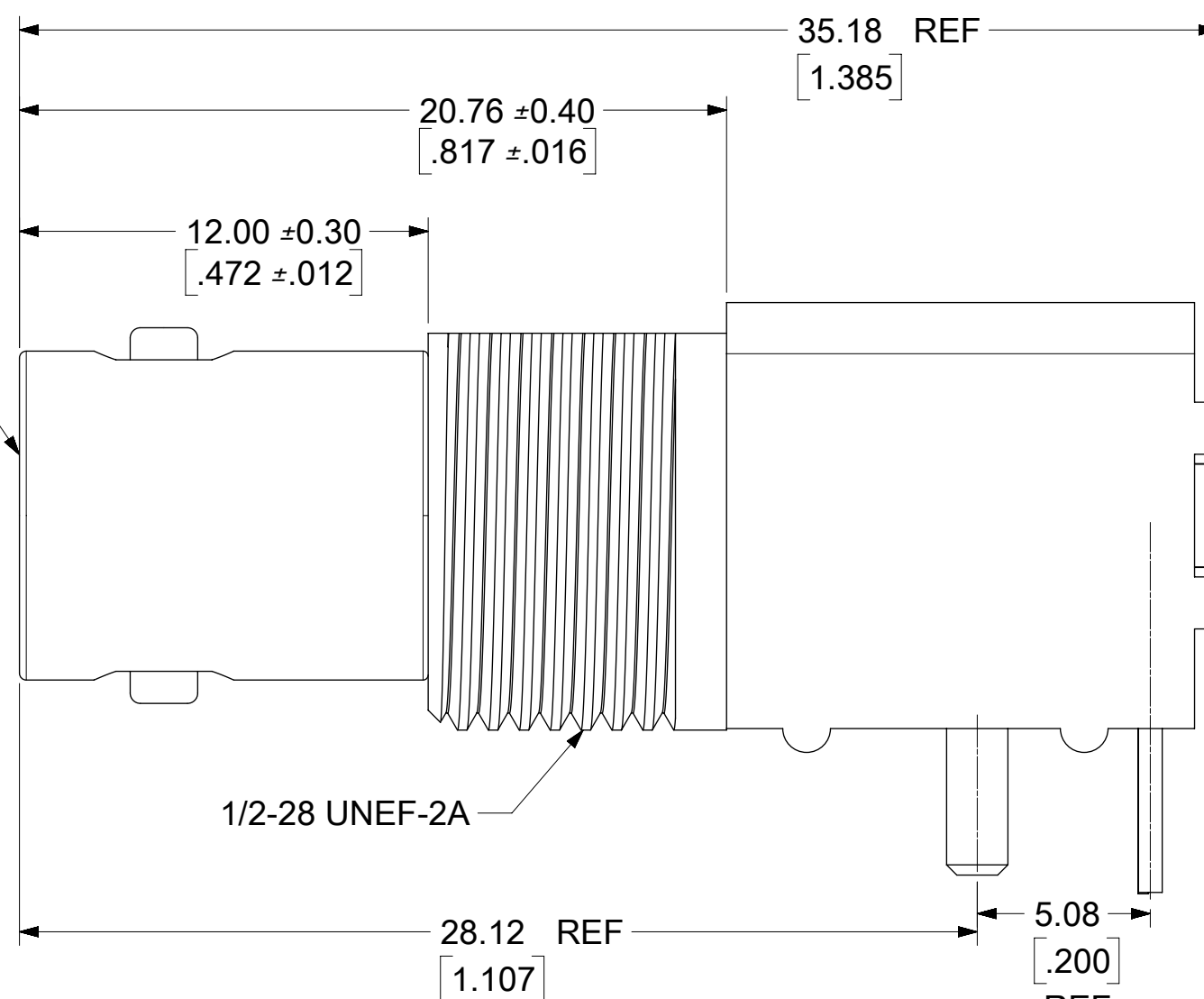
**JAM NUT: BRASS**  
**PLATED: NICKEL (70 μ-in MIN) OVER COPPER (30 μ-in MIN)**



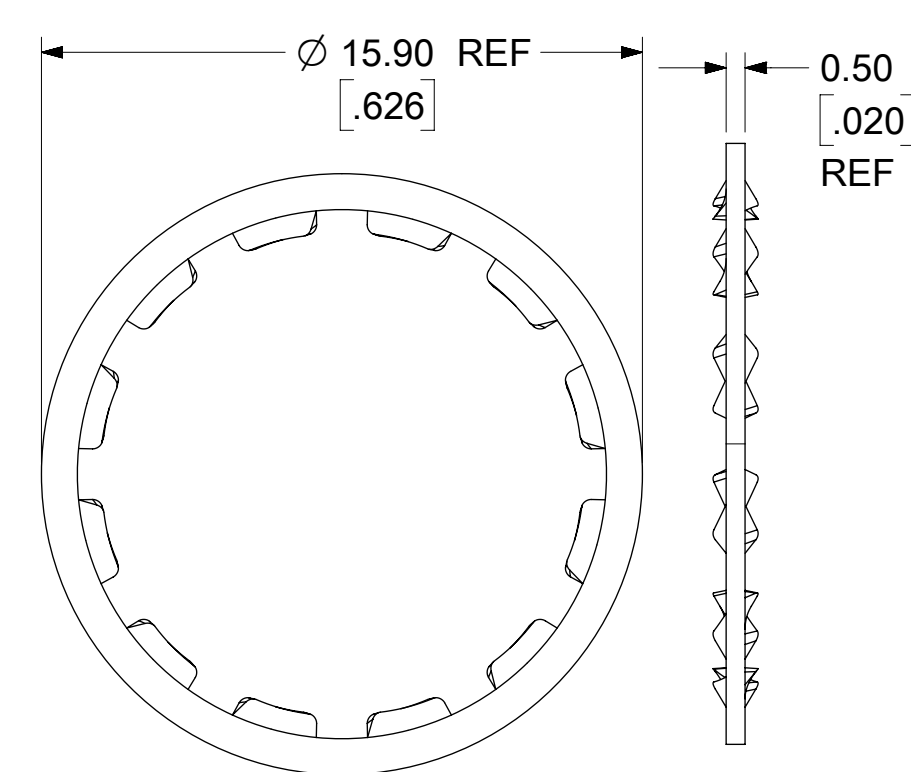
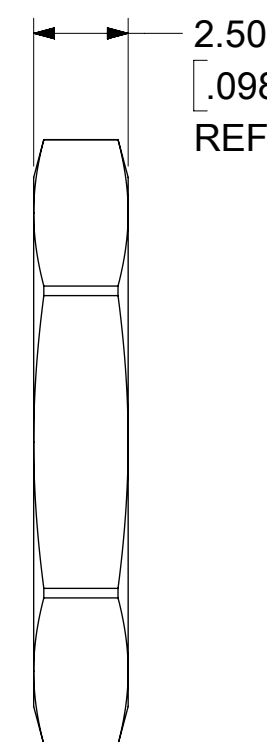
**RECOMMENDED MOUNTING HOLE**  
**MAXIMUM PANEL THICKNESS 5.5 [.217]**  
**RECOMMENDED MOUNTING TORQUE:**  
**0.56 N-m (5 IN-LBS)**



**RECOMMENDED PCB LAYOUT**



**JAM NUT**



**LOCKWASHER**

PS-89675-1030	ELECTRO/MECH PERFORMANCE
SPECIFICATION	DESCRIPTION

73171-4350	QYT (1) OF 73137-5003 IN SINGLE BAG WITH LABEL
73137-5003	BULK
PART NO.	PACKAGING

<b>SYMBOLS</b> THIS DRAWING CONTAINS INFORMATION THAT IS PROPRIETARY TO MOLEX ELECTRONIC TECHNOLOGIES, LLC AND SHOULD NOT BE USED WITHOUT WRITTEN PERMISSION DIMENSION UNITS: MM/IN SCALE: NTS GENERAL TOLERANCES (UNLESS SPECIFIED): 4 PLACES ± 3 PLACES ± 0.005 2 PLACES ± 0.13 ± 0.01 1 PLACE ± 0.25 ± 0 PLACES ± ANGULAR TOL ± 2.0 ° DRAFT WHERE APPLICABLE MUST REMAIN WITHIN DIMENSIONS THIRD ANGLE PROJECTION DRAWING SERIES: C-SIZE 73137	CURRENT REV/DESC:				
	EC NO: 614641	2019/03/19		BNC JACK, R/A, PCB RECEPTACLE, 50 OHMS BNC-JR, EWR-12952 PRODUCT CUSTOMER DRAWING	
DRWN: SSSHAH	2019/03/28	DOCUMENT NUMBER: SD-73137-5003	DOC TYPE: PSD		DOC PART: 001
CHK'D: LMEIER	2019/03/28	MATERIAL NUMBER: SEE TABLE	CUSTOMER:	SHEET NUMBER: 1 OF 1	
APPR: AROBERTSON	2019/03/28	INITIAL REVISION:			
DRWN: BOMALLEY	2012/01/18	SERIES: 73137			
APPR: JWIENER	2012/02/06	MATERIAL NUMBER: SEE TABLE			

DOCUMENT STATUS: P1	RELEASE DATE: 2019/03/28	19:32:11
---------------------	--------------------------	----------