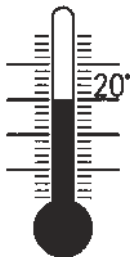
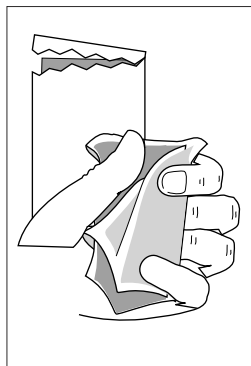


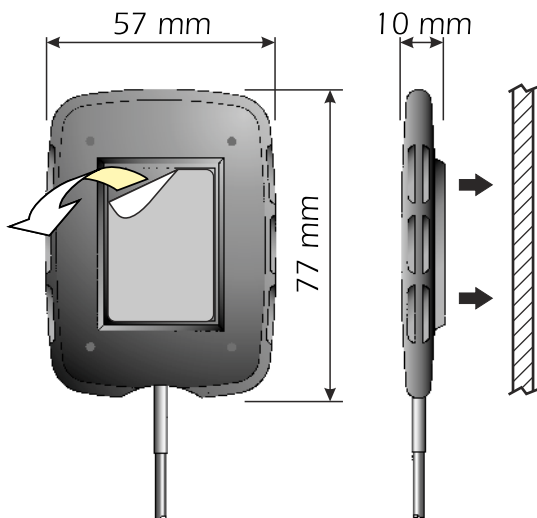
## MOUNTING INSTRUCTIONS

**1:** Choose the best mounting position **far away from any metallic parts**

**2:** Moreover, we suggest to clean carefully the surface and to proceed with the installation at a temperature of 20°C or higher.



**3:** Remove the protective film avoiding to touch the adhesive tape with your hands. Proceed by sticking the antenna on the window and pressing uniformly on its whole surface to get a perfect adhesion.



## INGLASS LOW PROFILE LTE & WLAN

Multi band Antenna

### MAIN FEATURES

- Very low profile multi band antenna
- Frequency range: from 800 MHz  
Multi bands antenna for: LTE, GSM dual, UMTS, WiMAX, WiFi (IEEE802.11b/g/h/p), V2X systems
- Installation: adhesive mount for glass, plastic box, wall, wood surfaces (NOT SUITABLE FOR METALLIC SURFACES)
- 3M adhesive tape for permanent fitting



HI-QUALITY ANTENNAS MADE IN ITALY

© Copyright SIRIO antenne - Technical Data are subjected to change - Printed in ITALY - Rev. 25/06/2018 - Cod. ID429

*Installation Manual*

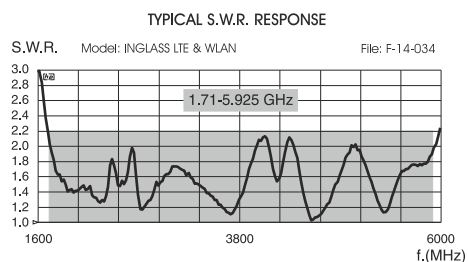
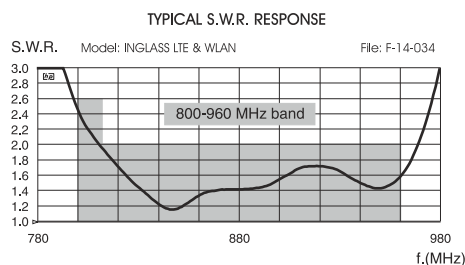
## SPECIFICATIONS

### Electrical Data

Type:	Indoor Adhesive Antenna
Frequency Range	800 - 810 MHz @ SWR $\leq$ 2.6 810 - 960 MHz @ SWR $\leq$ 2 1.71 - 5.925 GHz @ SWR $\leq$ 2.2
Impedance:	50 $\Omega$ Unbalanced
Radiation:	Omnidirectional
Polarization:	Vertical
Gain:	0 dBd, 2.14 dBi all bands
Max Power:	10 Watts from 800 to 2700 MHz 6 Watts from 2.7 to 3.8 GHz 5 Watts from 3.8 to 5.925 GHz
Connector type:	SMA Male
Cable Type / Length:	RG 174 AVU / 3 m (other length on request)

### Mechanical Data

Materials:	PCB, Thermoplastic, Copper
Dimensions (approx.):	57 x 77 x 10 mm
Weight (approx.):	70 gr
Mounting:	Adhesive tape. Suitable for «not metallic» surfaces



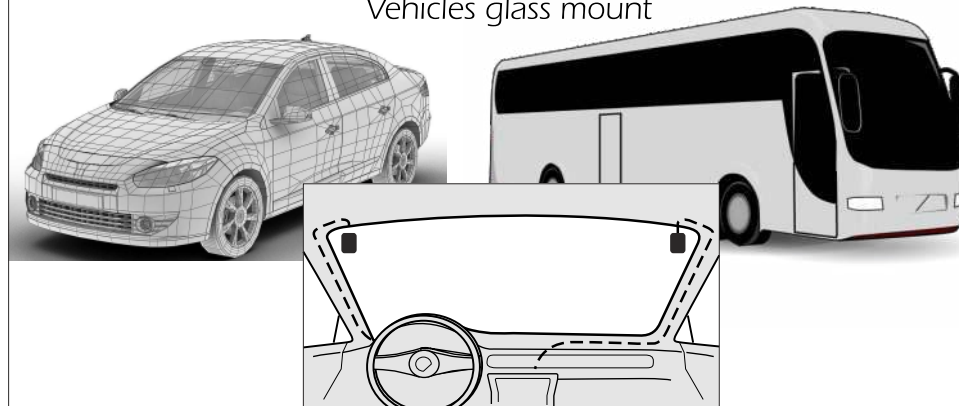
SWR test effected with 10cm cable



HI-QUALITY ANTENNAS MADE IN ITALY

## SUITABLE INSTALLATIONS

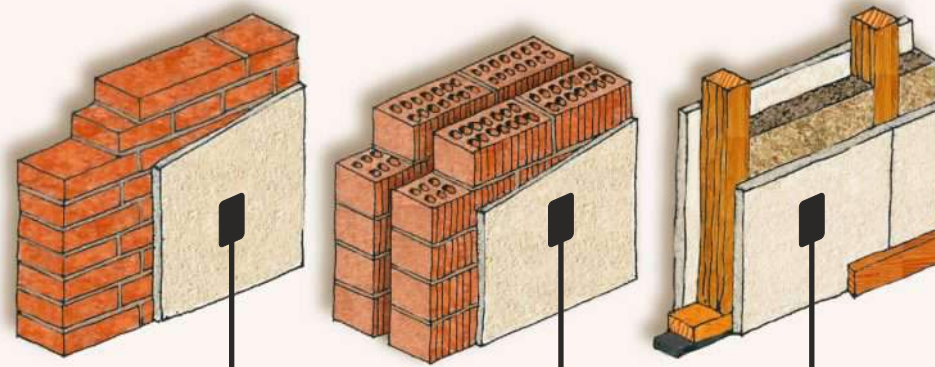
Vehicles glass mount



Plastic boxes



Windows glasses



Brick and concrete wall

Wooden wall