

PRELIMINARY

892 / 1850 MHz Diplexer

P/N 0892DP15D1940

Detail Specification: 01/25/08

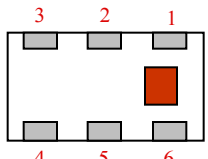
Page 1 of 2

General Specifications

Part Number	0892DP15D1940		
Passband (MHz)	Insertion Loss	Attenuation (dB)	Isolation
824 - 960	0.7 max.	16 min. @ 1648 ~ 1830 MHz	16 min.
		22 min. @ 2472 ~ 2745 MHz	
		15 min. @ 3300 ~ 3680 MHz	
		12 min. @ 4100 ~ 4600 MHz	
		15 min. @ 4920 ~ 5520 MHz	
		15 min. @ 5740 ~ 6440 MHz	
		15 min. @ 6560 ~ 7360 MHz	
1710 - 1990	0.8 max.	18 min. @ 3420 ~ 3820 MHz	18 min.
		20 min. @ 5130 ~ 5730 MHz	
		15 min. @ 6800 ~ 7680 MHz	

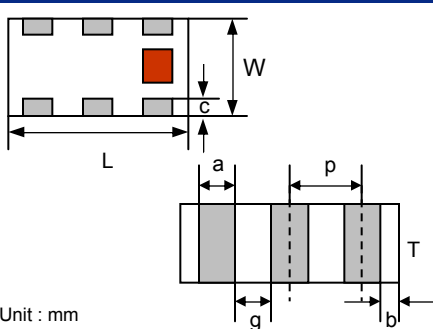
Return Loss	15 dB min.
Input Power	2 Watts max.
Impedance	50 Ω
Operating Temp	-40 to +85°C
Storage Temp	+5 ~ +35 °C, Humidity 45~75%RH
Storage Period	12 months in vacuum sealed bag; 1 week after opened
Reel Quantity	4000

Terminal Configuration	
No.	Function
1	Lower Freq. Port (P3)
2	GND
3	Higher Freq. Port (P1)
4	GND
5	Common Port (P2)
6	GND



Mechanical Dimensions

	In	mm
L	0.079 ± 0.004	2.00 ± 0.10
W	0.049 ± 0.004	1.25 ± 0.10
T	0.018 ± 0.002	0.45 ± 0.05
a	0.012 ± 0.004	0.30 ± 0.10
b	0.008 ± 0.004	0.20 ± 0.10
c	0.012 +.004/-.008	0.30 +0.1/-0.2
g	0.014 ± 0.004	0.35 ± 0.10
p	0.026 ± 0.002	0.65 ± 0.05



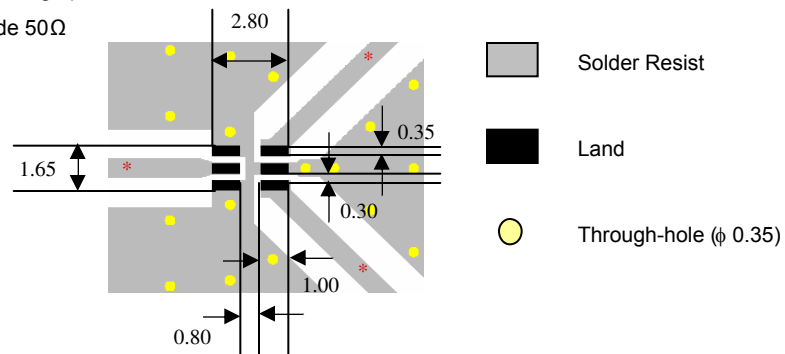
Unit : mm

Mounting Considerations

Mount these devices with brown mark facing up.

Line width should be designed to provide 50Ω impedance matching characteristics.

Units: mm



Johanson Technology, Inc. reserves the right to make design changes without notice.
All sales are subject to Johanson Technology, Inc. terms and conditions.

PRELIMINARY

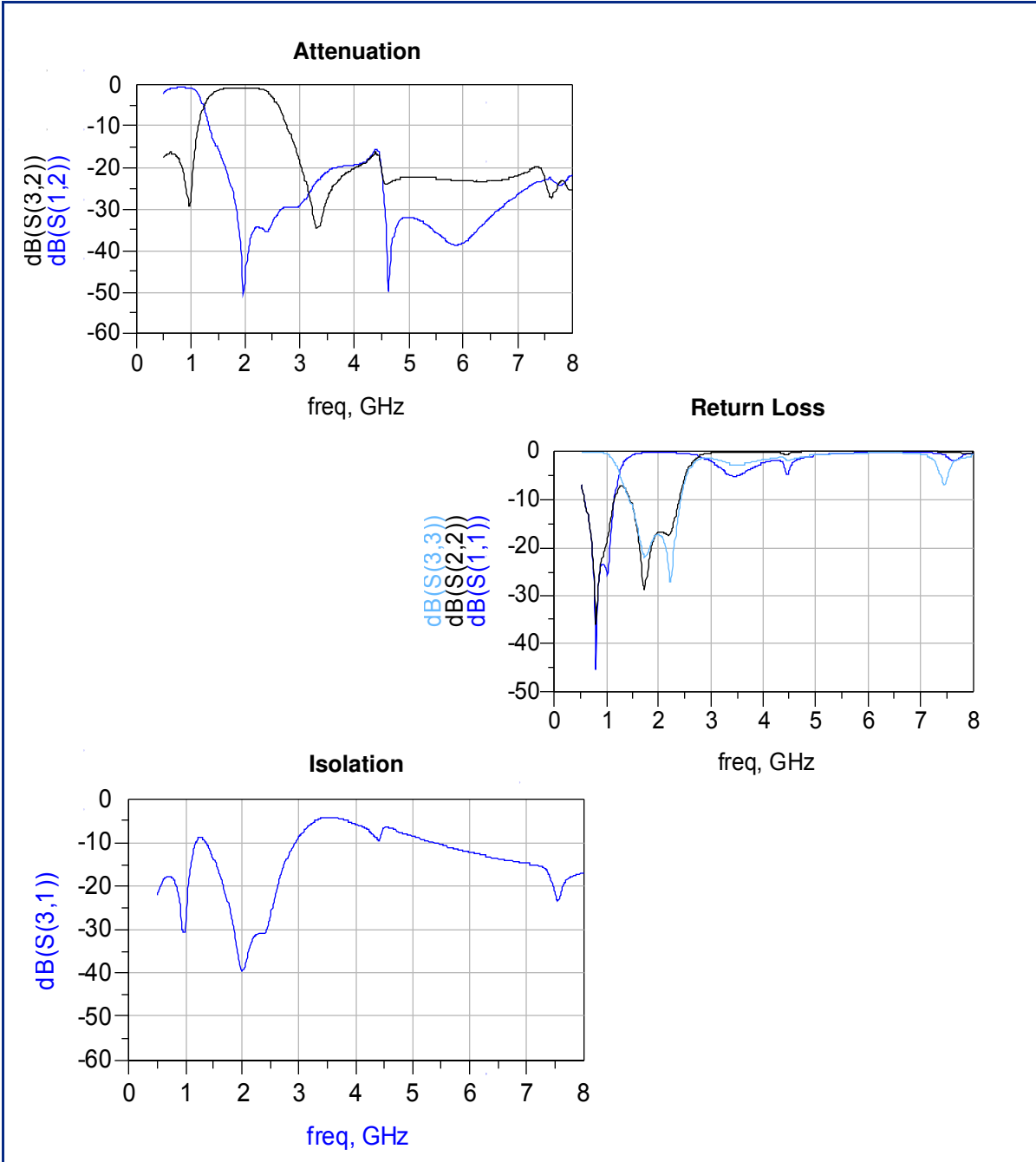
892 / 1850 MHz Diplexer

P/N 0892DP15D1940

Detail Specification: 01/25/08

Page 2 of 2

Typical Electrical Performance (T=25°C)



Johanson Technology, Inc. reserves the right to make design changes without notice.

All sales are subject to Johanson Technology, Inc. terms and conditions.



www.johansontechnology.com

4001 Calle Tecate • Camarillo, CA 93012 • TEL 805.389.1166 FAX 805.389.1821

2008 Johanson Technology, Inc. All Rights Reserved