

PART NUMBER	REVISION	DESCRIPTION	FEED TYPE
2151034-2	J	FINE CRIMP HEIGHT ADJUST	PNEUMATIC
7-2151034-2	J	PNEUMATIC AND CRIMP TOOLING KIT	PNEUMATIC
7-2151034-7	A	CRIMP TOOLING KIT	-

APPLICATOR DATA		
CRIMP	SIZE	TYPE
WIRE	.176 [4.47 mm]	○
INSUL	-	-

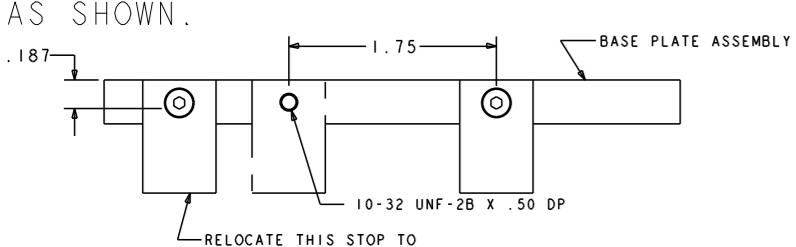
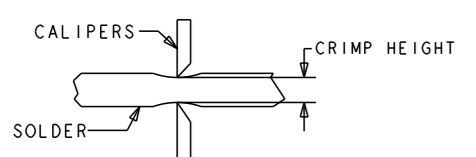
APPLICATOR INSTRUCTIONS
408-35042

TERMINAL DATA: TE TERMINAL		TE CRIMP SPECIFICATION	
TERMINAL NAME: FULLY INSULATED FASTON			
WIRE STRIP LENGTH		INSULATION DIAMETER RANGE	
.265-.297 IN [6.73-7.54 mm]		∅	△8
TERMINAL APPLICATION SPECIFICATION	114-2123	-	-

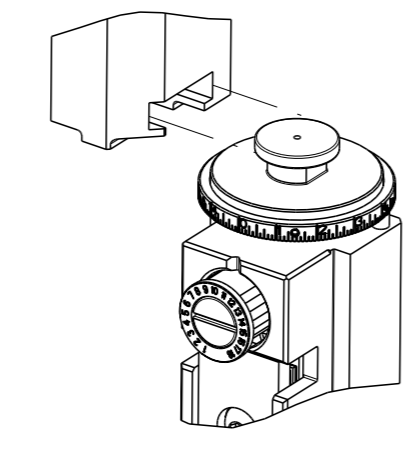
TERMINALS APPLIED △4			
TE TERMINAL	TE TERMINAL	TE TERMINAL	TE TERMINAL
2-520102-1	5-520183-2	2-520274-2	
2-520102-2	9-520183-2	2-521144-2	
2-520181-2	2-520193-2	2-520261-2	
2-520181-4	9-520193-2	9-520261-2	
5-520181-2	2-521102-2	2-520263-2	
9-520181-2	2-521104-2	2-520263-4	
2-520183-2	2-521308-2	5-520263-2	
2-520183-4	2-521406-2		

WIRE SIZE	CRIMP HEIGHT INCH [mm]	CRIMP HEIGHT REFERENCE SETTING	∅ SOLDER △0
18, (2)22, or (1)20+(1)22	0.070+/-0.002 [1.78+/-0.05]	6.4	.125 IN [3.175mm]
20 or 22	0.065+/-0.002 [1.65+/-0.05]	8.3	.125 IN [3.175mm]

- △ RECOMMENDED SPARE PARTS
- △ REFER TO SUPPLIED INSTRUCTION SHEET FOR CLEANING, LUBRICATION AND STORAGE OF APPLICATOR.
- △ CRIMP HEIGHT REFERENCE SETTING WAS THE SETTING USED WHEN THE APPLICATOR WAS QUALIFIED AT THE FACTORY. ADJUSTMENT MAY BE NECESSARY WHEN RUNNING APPLICATOR IN THE FIELD.
- △ TO CONVERT THE APPLICATOR TO A NON-CARRIER CUTTING STYLE, REMOVE ITEM 13 AND ATTACH TO THE LOCATION ON THE BACK SIDE OF THE HOUSING. REFER TO INSTRUCTION SHEET FOR ADDITIONAL INFORMATION.
- △ ITEM 7 MUST BE REMOVED IF APPLICATOR IS USED ON BENCH MACHINE.
- △ ITEMS 5 AND 9 OR ITEMS 10 AND 22 ARE REQUIRED WHEN RUNNING ON A LEADMAKER. ITEM 42 OR 43 REQUIRED WHEN RUNNING ON A BENCH MACHINE.
- △ FEED ADJUSTMENT MAY BE REQUIRED WHEN SWITCHING TERMINALS.
- △ GROUP 1 TERMINALS: ∅.135 IN [3.43mm] MAX INSULATION
GROUP 2 TERMINALS: ∅.200 IN [5.08mm] MAX INSULATION
- △ USE ITEMS 5, 9, OR 42 WITH GROUP 1 TERMINALS
USE ITEMS 10, 22, OR 43 WITH GROUP 2 TERMINALS
- △ TO CHECK CRIMP HEIGHT, CRIMP SOLDER (∅.12 IN [3.05mm] 60/40 SOLID CORE) AND MEASURE AT CENTER OF SLUG.
- △ IT MAY BE NECESSARY TO MODIFY THE T-TERMINATING/K-PRESS BASE PLATE BEFORE USE BY ADDING A 10-32 HOLE TO RELOCATE THE FORWARD STOP AS SHOWN.
- △ ITEMS 253 AND 255 MUST BE INSTALLED IN THE G-TERMINATING UNIT CHIP RELIEF HOLE BEFORE INSTALLING THE APPLICATOR.
- △ ITEM 257, REQUIRED IF APPLICATOR IS RUN ON T-TERMINATING UNIT/K-PRESS. GUARD, ITEM 256, REQUIRED IF APPLICATOR IS BEING USED ON G-TERMINATOR.



ATLANTIC VERSION TERMINATOR INTERFACE ADAPTER



***WARNING**
ON INSTALLATION, SET WIRE DISC TO CRIMP HEIGHT REFERENCE SETTING FOR LARGEST WIRE SIZE. CRIMP HEIGHT REFERENCE SETTINGS GREATER THAN THE VALUE SHOWN MAY CAUSE DAMAGE TO THE CRIMP TOOLING, REFER TO THE INSTRUCTION SHEET FOR PROPER SETUP AND ADJUSTMENTS.

- △4 TERMINAL PITCH NOT COMPATIBLE WITH MECHANICAL FEED
- △5 HOLD DOWN BRACKET 803931-1 IS NEEDED IN ORDER TO BE USED WITH K-PRESS
- 16. UNLESS SPECIFIED OTHERWISE TORQUE VALUES SHALL BE USED PER DOCUMENT, 101-35000.

ATLANTIC VERSION
Shown on sheets 1 of 4 & 2 of 4
(Pacific version shown on sheets 3 of 4 & 4 of 4)

LOC	DIST	REVISIONS					
A	66	#	LY#	DESCRIPTION	DATE	OWN	APVD
		F		ECR-18-017749	12NOV2018	JAH	CT
		G		ECR-19-000331	09JAN2019	FJ	YY
		H		ECR-19-000727	23JAN2019	MZ	CT
		J		ECR-19-005049	28MAR2019	LG	TE

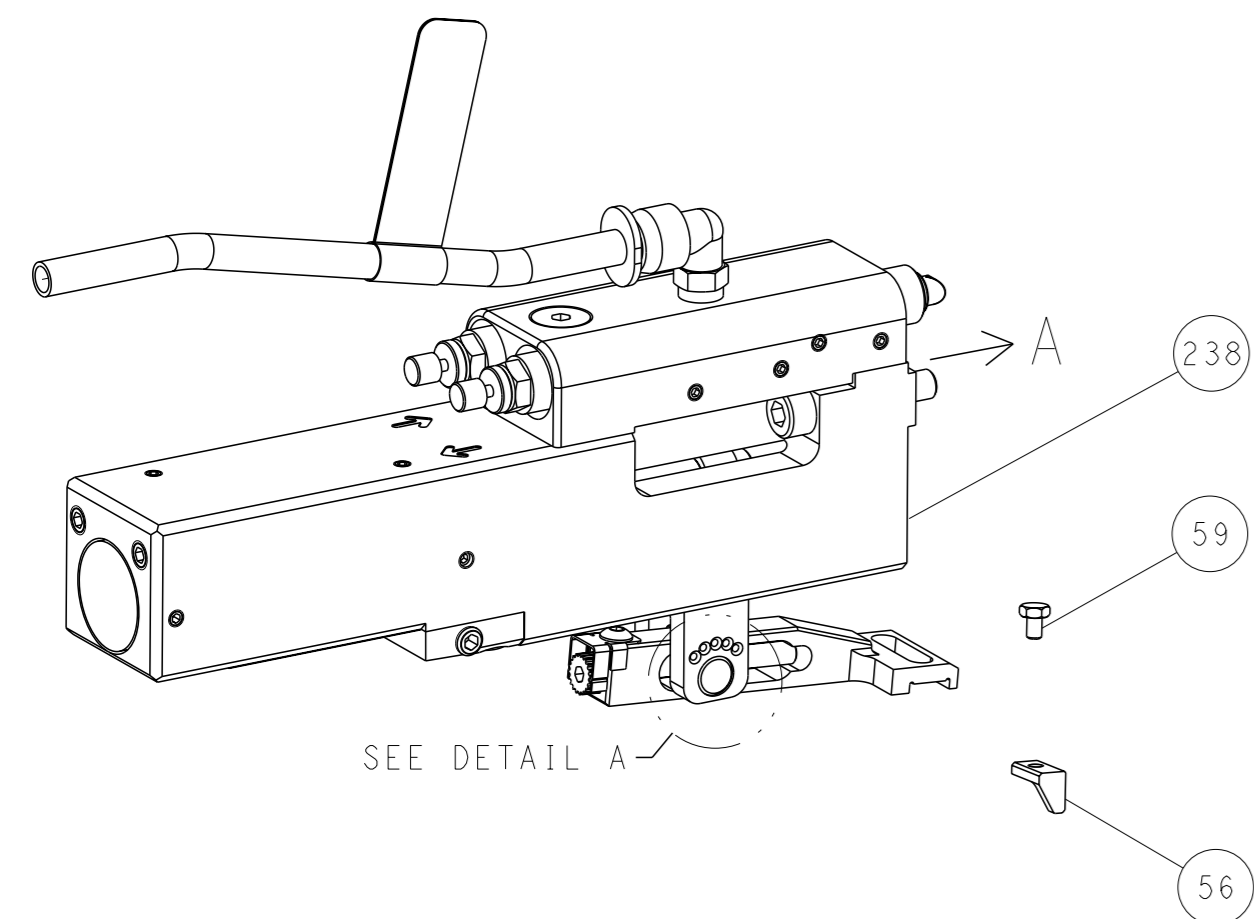
△3	-	REF	REF	462992-5	GUARD ASSY		257
△3	-	REF	REF	679532-1	INSERT, GUARD		256
△2	-	1	1	189728-1	BRACKET, SPACER		255
△2	-	1	1	568681-1	SPACER, BASE PLATE		253
	-	1	1	2119641-1	FEED CAM, AIR FEED		248
	-	1	1	18023-1	SCR, SKT HD CAP M3 X 5.0		241
	-	1	1	2844940-2	AIR FEED MODULE		238
	-	1	1	1-18028-0	WASHER, FLAT, REG M8		192
	-	REF	REF	994970-2	COUNTER, MAGNETIC		164
	-	1	1	1-22281-8	SPRING, COMPRESSION		121
	-	1	1	2844908-1	SCREW, LOCKING		99
	-	1	1	2844907-1	POST, LOCKING		98
	-	1	1	1-690438-0	FRONT STRIP GUIDE		96
	-	4	4	2168083-1	SCR, SKT HD CAP, RoHS, M3 X 8.0		95
	-	1	1	2168083-6	SCR, SKT HD CAP, RoHS, M5 X 65		93
	-	1	1	455888-4	SPACER, CRIMPER		82
	-	1	1	240641-6	SPACER		81
	-	1	1	1803607-3	DOCUMENTATION PACKAGE		71
	-	1	1	2161332-2	DEPRESSOR, WIRE FUNNEL		70
	-	1	1	2161331-1	SPACER, WIRE FUNNEL DEPRESSOR		69
	-	2	2	1-18028-4	WASHER, FLAT, REG M3		68
	-	1	1	2119740-1	TAG, IDENTIFICATION		67
	-	2	2	2168078-1	SCREW, DRIVE, RH, RoHS, 2 x .188		66
	-	2	2	2-18032-5	SCR, SET, FLT PNT, M5 X 20.0		61
	-	1	1	2079383-4	SCR, BHSC, RoHS (M4 X 8)		60
	-	1	1	5-18022-5	SCR, HEX HD CAP, M4 X 6.0		59
	-	1	1	462427-2	FINGER, FEED		56
	-	4	4	2168400-1	SHCS, LOW HEAD, RoHS, M4 X 12		54
	-	2	2	2168083-8	SCR, SKT HD CAP, RoHS, M4 X 16		53
	-	1	1	18023-9	SCR, SKT HD CAP M4 X 6.0		49
	-	1	1	1-1803583-9	APPLICATOR BASIC ASSEMBLY, SF		46
	-	1	1	1803515-1	RAM ASSEMBLY, SF ATLANTIC		44
△9	-	1	1	462433-7	SUPPORT, INSULATION		43
△9	-	1	1	462433-6	SUPPORT, INSULATION		42
	-	1	1	1803602-1	SCR, BHSC, RoHS (M8 X 25)		41
	-	2	2	5-22278-1	SPRING, COMPRESSION		33
	-	2	2	1-2168083-4	SCR, SKT HD CAP, RoHS, M4 X 5		30
	-	1	1	2161336-2	PLATE, REAR STRIP GUIDE		29
	-	2	2	22281-9	SPRING, COMPRESSION		27
	-	1	1	356835-1	LEVER, DRAG RELEASE		26
	-	1	1	240792-1	DRAG, TERMINAL		25
	-	1	1	684042-4	GUIDE, STRIP, FRONT		24
	-	1	1	980371-4	SCR, SKT HD SHLDR 5.0 DIA X 6.0		23
△9	△6	-	1	1	462431-6	WIRE FUNNEL	22
	-	1	1	2168083-2	SCR, SKT HD CAP, RoHS, M4 X 8.0		21
	-	1	1	1-18028-2	WASHER, FLAT, REG M4		20
	-	1	1	2119533-1	STRIPPER, SIDE FEED		19
	-	1	1	463460-3	HOLD DOWN, TERMINAL		18
△1	-	1	1	469542-3	REAR FLOATING SHEAR		17
	-	4	4	1-2168083-1	SCR, SKT HD CAP, RoHS, M3 X 6		16
△1	-	1	1	2161335-2	SHEAR PLATE, REAR		15
	-	1	1	2119862-2	SHEAR HOLDER, REAR		14
△1	-	1	1	2280441-1	INSERT, SHEAR		13
	-	1	1	3-22280-3	SPRING, COMPRESSION		12
	-	1	1	356885-4	STOP, SHEAR		11
△9	-	1	1	462843-6	TERMINAL SUPPORT		10
△9	-	1	1	462843-5	TERMINAL SUPPORT		9
△1	△2	1	1	464291-4	ANVIL, SAND-BLASTED 22-18		8
△5	-	1	1	803925-2	GUIDE, CARRIER SCRAP		7
	-	1	1	2-690468-5	DEPRESSOR SHEAR, REAR		6
△9	△6	-	1	1	462431-1	WIRE FUNNEL	5
	-	1	1	238011-1	BLOCK, CRIMPER SPACER		4
△1	1	2	1	464290-1	CRIMPER, SEMI-FLAT 22-18		1

DIMENSIONS:		TOLERANCES UNLESS OTHERWISE SPECIFIED:		MATERIAL:	
mm	0 PLC ±	1 PLC ±	2 PLC ±	3 PLC ±	4 PLC ±
	ANGLES FINISH	-			

OWN	B. WEAVER	21OCT2011
CHK	G. HOFNER	21OCT2011
APVD	T. ELBIN	21OCT2011
NAME: OCEAN SIDE FEED APPLICATOR		
SIZE	CAGE CODE	DRAWING NO
A1	00779	2151034
Customer Accessible Production Drawing		
SCALE	1:1	SHEET 1 of 4
REV	J	

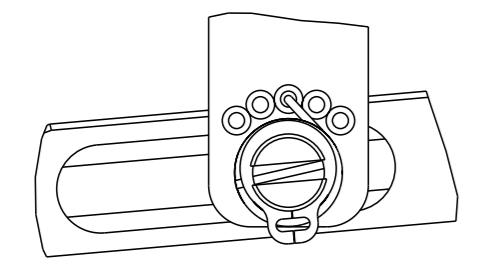
LOC	DIST	REVISIONS					
A	66	P	LYR	DESCRIPTION	DATE	OWN	APVD
		-		SEE SHEET 1	-	-	-

FEED TYPE PNEUMATIC



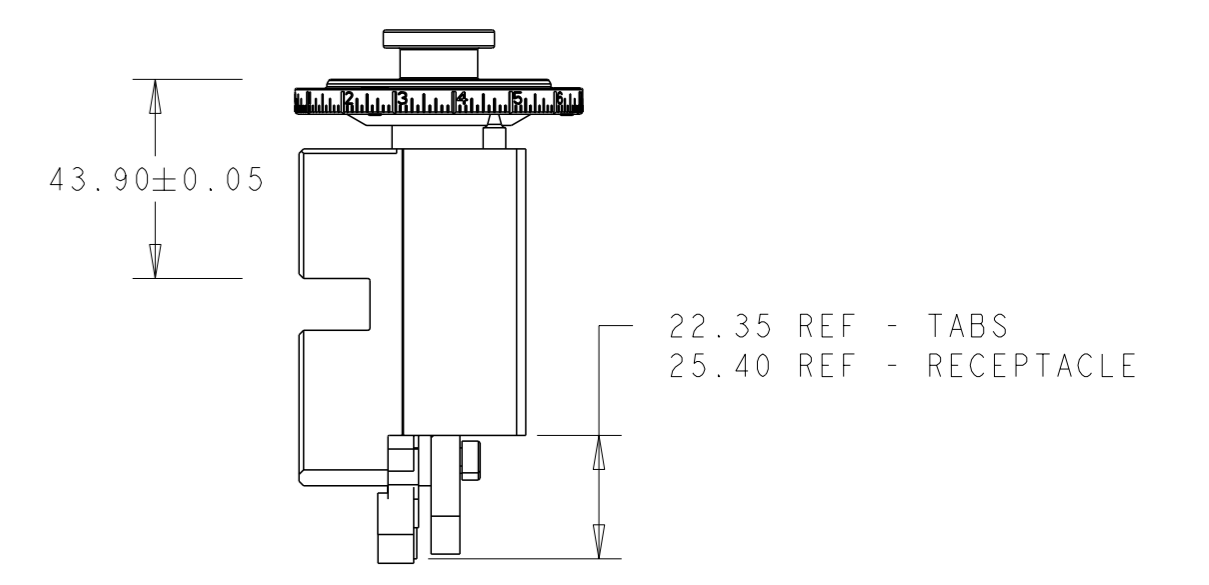
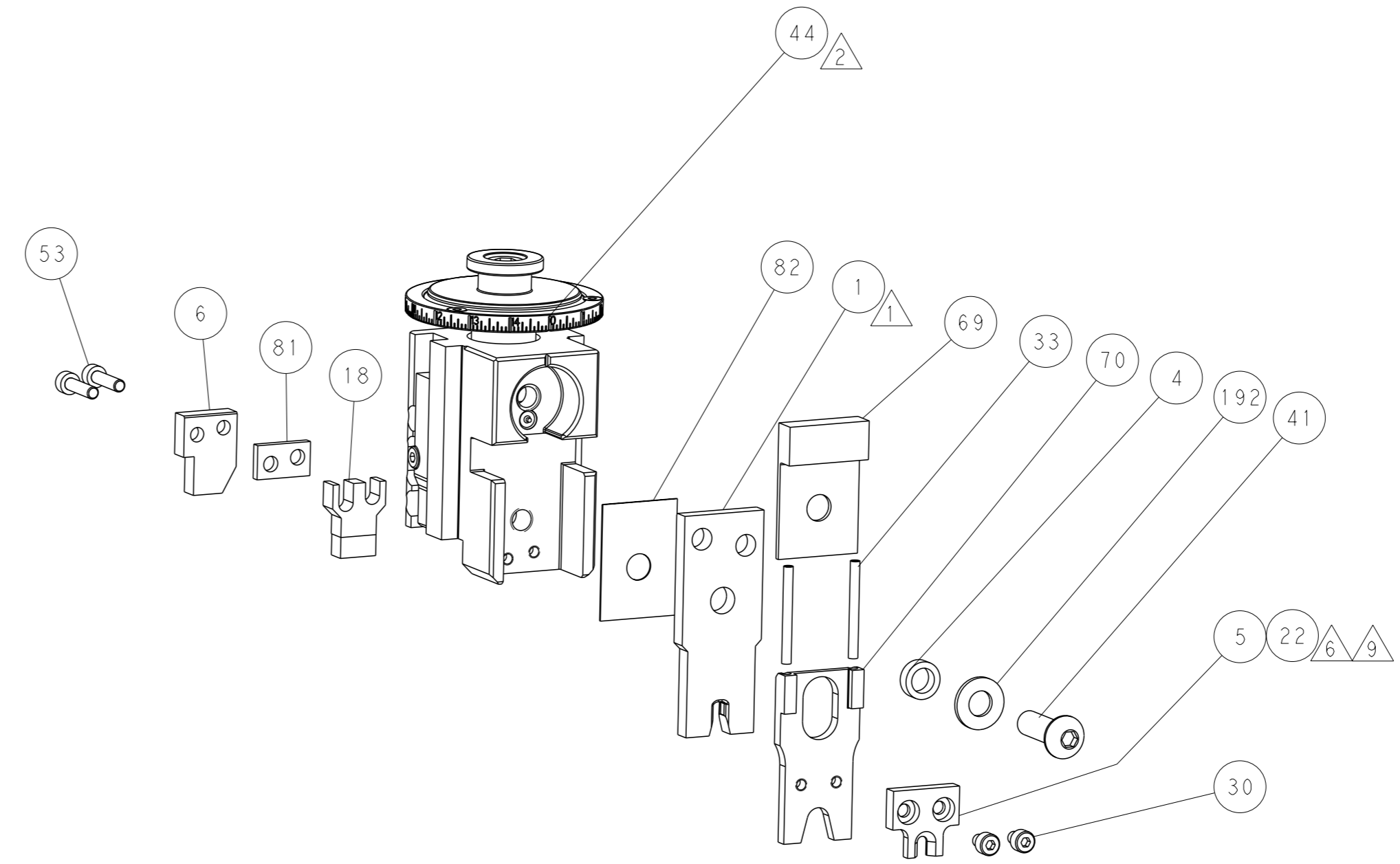
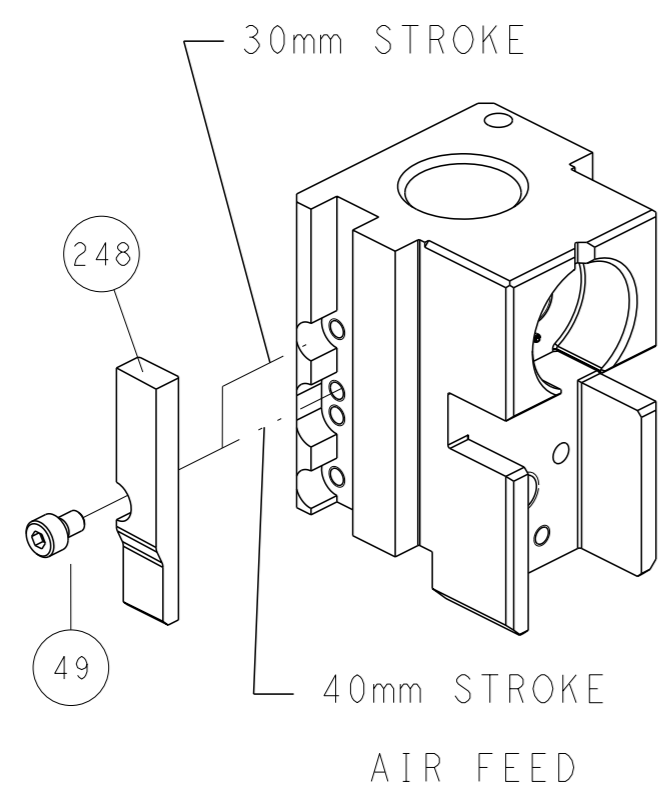
SEE DETAIL A

FEED SPRING SETTING POSITION (SHOWN FROM REAR SIDE)

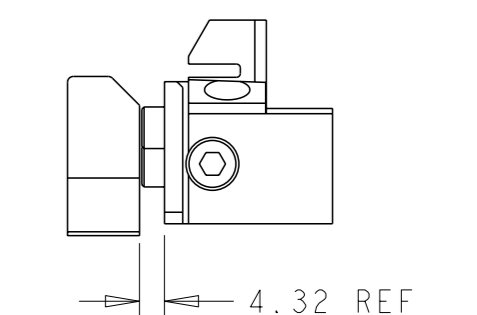
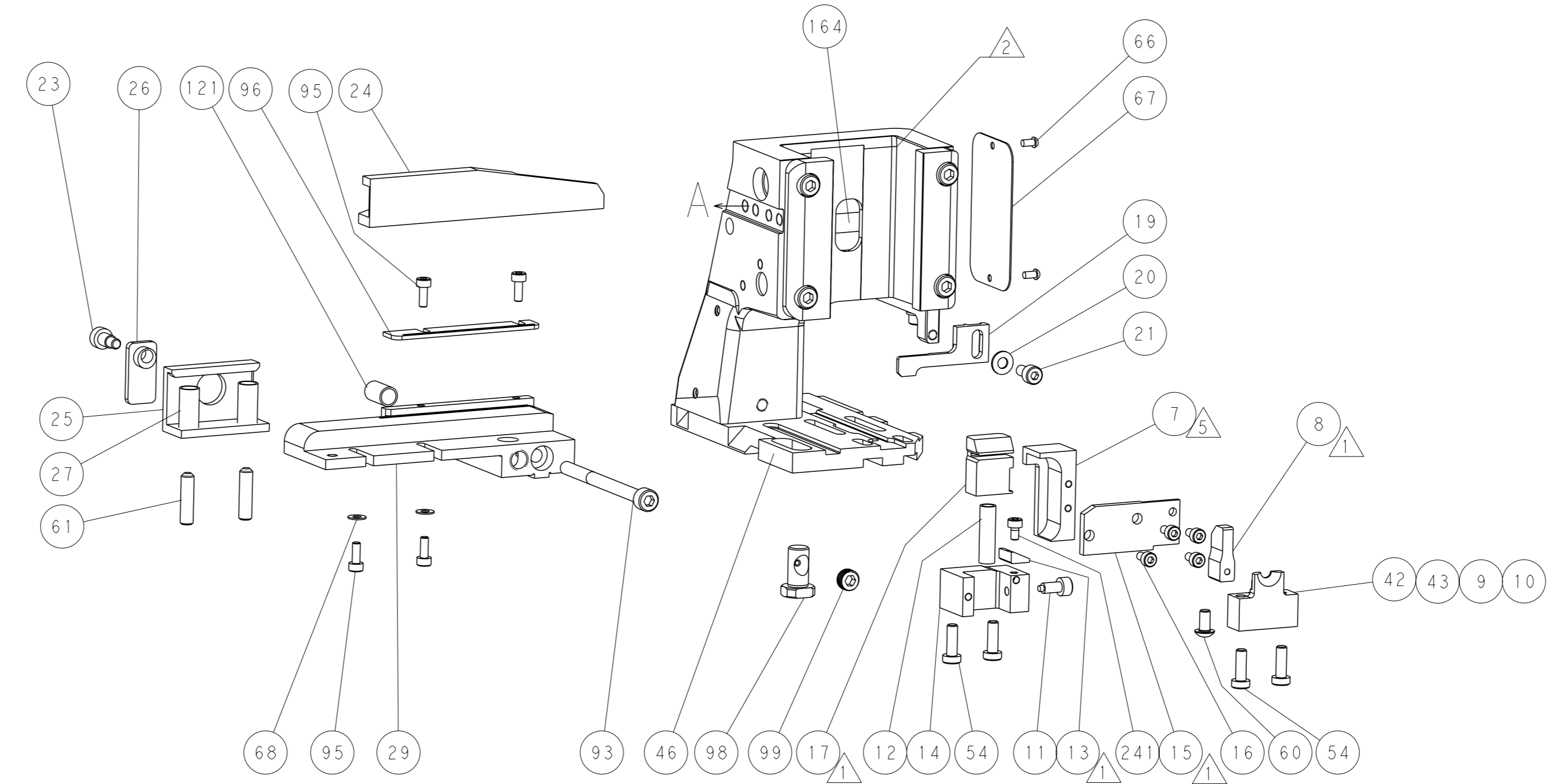


DETAIL A

CAM POSITIONS



RAM & HOLD-DOWN SET-UP



LOWER TOOLING SET-UP

ATLANTIC VERSION
 Shown on sheets 1 of 4 & 2 of 4
 (Pacific version shown on sheets 3 of 4 & 4 of 4)

<small>THIS DRAWING IS A CONTROLLED DOCUMENT FOR TYCO ELECTRONICS CORPORATION. IT IS SUBJECT TO CHANGE AND TO CONTROLING ENGINEERING DISCRETION. SHOULD BE CONTACTED FOR THE LATEST REVISION.</small>		OWN: B. WEAVER 21OCT2011 CHK: G. HOFNER 21OCT2011 APVD: T. ELBIN 21OCT2011	TE Connectivity Harrisburg, PA 17105-3608
DIMENSIONS: mm TOLERANCES UNLESS OTHERWISE SPECIFIED: 0 PLC ± 1 PLC ± 2 PLC ± 3 PLC ± 4 PLC ± ANGLES FINISH *		NAME: OCEAN SIDE FEED APPLICATOR SIZE: A1 CAGE CODE: 00779 DRAWING NO: 2151034 WEIGHT: - SCALE: 1:1	RESTRICTED TO: - SHEET 2 OF 4 REV J
MATERIAL: - FINISH: -		Customer Accessible Production Drawing	

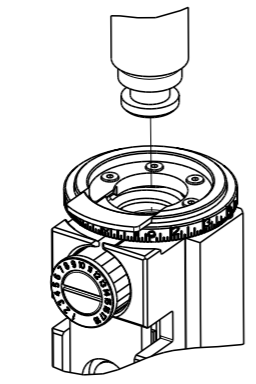
THIS DRAWING IS UNPUBLISHED. RELEASED FOR PUBLICATION 2011
 BY TYCO ELECTRONICS CORPORATION. ALL RIGHTS RESERVED.

PART NUMBER	REVISION	DESCRIPTION	FEED TYPE
2-2151034-2	J	FINE CRIMP HEIGHT ADJUST	PNEUMATIC
7-2151034-7	A	CRIMP TOOLING KIT	-

APPLICATOR DATA		
CRIMP	SIZE	TYPE
WIRE	.176 [4.47 mm]	0
INSUL	-	-

APPLICATOR INSTRUCTIONS 408-35042

PACIFIC VERSION TERMINATOR INTERFACE ADAPTER



TERMINAL DATA: TE TERMINAL TE CRIMP SPECIFICATION

TERMINAL NAME: FULLY INSULATED FASTON			
WIRE STRIP LENGTH	INSULATION DIAMETER RANGE		
.265-.297 IN [6.73-7.54 mm]	Ø		
TERMINAL APPLICATION SPECIFICATION			
114-2123			
TERMINALS APPLIED			
TE TERMINAL	TE TERMINAL	TE TERMINAL	TE TERMINAL
2-520102-1	5-520183-2	2-520274-2	
2-520102-2	9-520183-2	2-521144-2	
2-520181-2	2-520193-2	2-520261-2	
2-520181-4	9-520193-2	9-520261-2	
5-520181-2	2-521102-2	2-520263-2	
9-520181-2	2-521104-2	2-520263-4	
2-520183-2	2-521308-2	5-520263-2	
2-520183-4	2-521406-2		

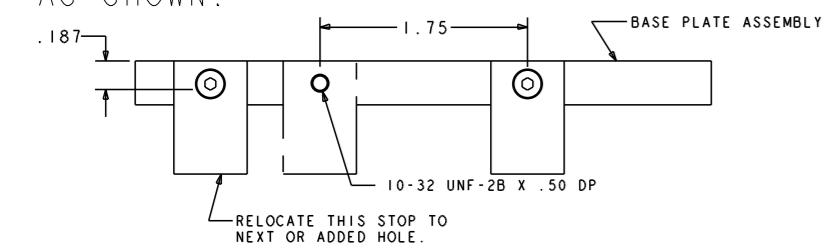
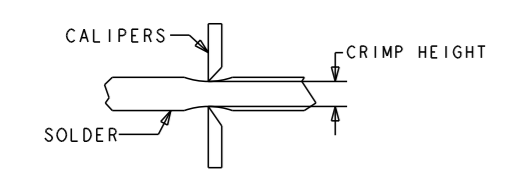
GROUP 1 8 9 GROUP 2 8 9

WIRE SIZE	CRIMP HEIGHT INCH [mm]	CRIMP HEIGHT REFERENCE SETTING	Ø SOLDER
18, (2)22, or (1)20+(1)22	0.070+/-0.002 [1.78+/-0.05]	6.4	.125 IN [3.175mm]
20 or 22	0.065+/-0.002 [1.65+/-0.05]	8.3	.125 IN [3.175mm]

***WARNING**
 ON INSTALLATION, SET WIRE DISC TO CRIMP HEIGHT REFERENCE SETTING FOR LARGEST WIRE SIZE. CRIMP HEIGHT REFERENCE SETTINGS GREATER THAN THE VALUE SHOWN MAY CAUSE DAMAGE TO THE CRIMP TOOLING, REFER TO THE INSTRUCTION SHEET FOR PROPER SETUP AND ADJUSTMENTS.

- 1 RECOMMENDED SPARE PARTS
- 2 REFER TO SUPPLIED INSTRUCTION SHEET FOR CLEANING, LUBRICATION AND STORAGE OF APPLICATOR.
- 3 CRIMP HEIGHT REFERENCE SETTING WAS THE SETTING USED WHEN THE APPLICATOR WAS QUALIFIED AT THE FACTORY. ADJUSTMENT MAY BE NECESSARY WHEN RUNNING APPLICATOR IN THE FIELD.
- 4 TO CONVERT THE APPLICATOR TO A NON-CARRIER CUTTING STYLE, REMOVE ITEM 13 AND ATTACH TO THE LOCATION ON THE BACK SIDE OF THE HOUSING. REFER TO INSTRUCTION SHEET FOR ADDITIONAL INFORMATION.
- 5 ITEM 7 MUST BE REMOVED IF APPLICATOR IS USED ON BENCH MACHINE.
- 6 ITEMS 5 AND 9 OR ITEMS 10 AND 22 ARE REQUIRED WHEN RUNNING ON A LEADMAKER. ITEM 42 OR 43 REQUIRED WHEN RUNNING ON A BENCH MACHINE.
- 7 FEED ADJUSTMENT MAY BE REQUIRED WHEN SWITCHING TERMINALS.
- 8 GROUP 1 TERMINALS: Ø.135 IN [3.43mm] MAX INSULATION
 GROUP 2 TERMINALS: Ø.200 IN [5.08mm] MAX INSULATION
- 9 USE ITEMS 5, 9, OR 42 WITH GROUP 1 TERMINALS
 USE ITEMS 10, 22, OR 43 WITH GROUP 2 TERMINALS
- 10 TO CHECK CRIMP HEIGHT, CRIMP SOLDER (Ø.12 IN [3.05mm] 60/40 SOLID CORE) AND MEASURE AT CENTER OF SLUG.
- 11 IT MAY BE NECESSARY TO MODIFY THE T-TERMINATING/K-PRESS BASE PLATE BEFORE USE BY ADDING A 10-32 HOLE TO RELOCATE THE FORWARD STOP AS SHOWN.
- 12 ITEMS 253 AND 255 MUST BE INSTALLED IN THE G-TERMINATING UNIT CHIP RELIEF HOLE BEFORE INSTALLING THE APPLICATOR.
- 13 ITEM 257, REQUIRED IF APPLICATOR IS RUN ON T-TERMINATING UNIT/K-PRESS. GUARD, ITEM 256, REQUIRED IF APPLICATOR IS BEING USED ON G-TERMINATOR.

- 14 TERMINAL PITCH NOT COMPATIBLE WITH MECHANICAL FEED
- 15 HOLD DOWN BRACKET 803931-1 IS NEEDED IN ORDER TO BE USED WITH K-PRESS
- 16. UNLESS SPECIFIED OTHERWISE TORQUE VALUES SHALL BE USED PER DOCUMENT, 101-35000.



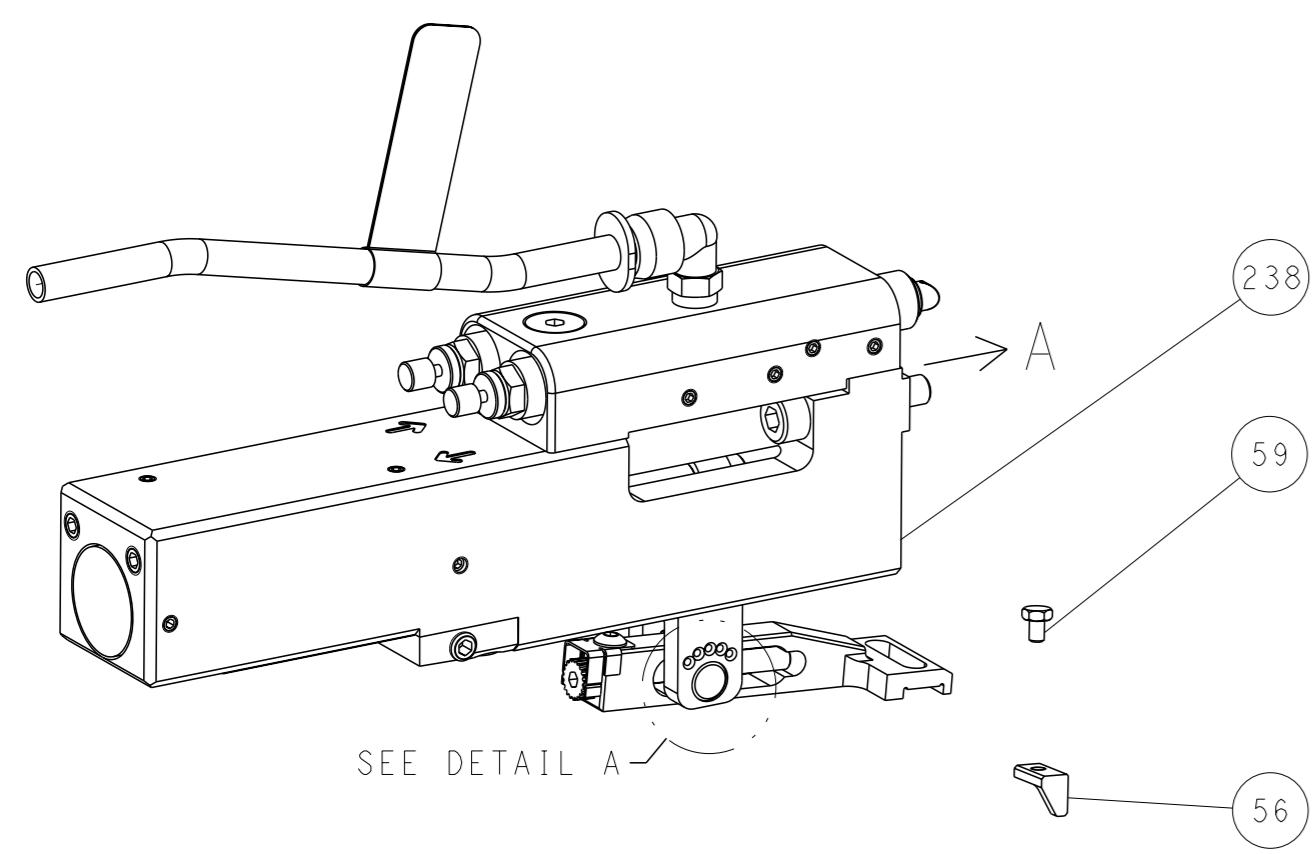
LOC	DIST	REV	DESCRIPTION	DATE	OWN	APVD
A	66		SEE SHEET 1			
-	REF	462992-5	GUARD ASSY			257
-	REF	679532-1	INSERT, GUARD			256
-	1	189728-1	BRACKET, SPACER			255
-	1	568681-1	SPACER, BASE PLATE			253
-	1	18023-1	SCR, SKT HD CAP M3 X 5.0			241
-	1	2844940-2	AIR FEED MODULE			238
-	1	1-18028-0	WASHER, FLAT, REG M8			192
-	REF	994970-2	COUNTER, MAGNETIC			164
-	1	2119641-2	FEED CAM, AIR FEED			151
-	1	2079383-8	SCR, BHSC, RoHS (M4 X 16)			144
-	4	2168400-5	SHCS, LOW HEAD, RoHS, M4 X 20			143
-	1	2-1803583-0	APPLICATOR BASIC ASSEMBLY, SF			141
-	1	1803516-1	RAM ASSEMBLY, SF PACIFIC			140
-	1	1-22281-8	SPRING, COMPRESSION			121
-	1	2844908-1	SCREW, LOCKING			99
-	1	2844907-1	POST, LOCKING			98
-	1	1-690438-0	FRONT STRIP GUIDE			96
-	4	2168083-1	SCR, SKT HD CAP, RoHS, M3 X 8.0			95
-	1	2168083-6	SCR, SKT HD CAP, RoHS, M5 X 65			93
-	1	455888-4	SPACER, CRIMPER			82
-	1	240641-6	SPACER			81
-	1	1803607-3	DOCUMENTATION PACKAGE			71
-	1	2161332-2	DEPRESSOR, WIRE FUNNEL			70
-	1	2161331-1	SPACER, WIRE FUNNEL DEPRESSOR			69
-	2	1-18028-4	WASHER, FLAT, REG M3			68
-	1	2119740-1	TAG IDENTIFICATION			67
-	2	2168078-1	SCREW, DRIVE, RH, RoHS, 2 x .188			66
-	2	2-18032-5	SCR, SET, FLT PNT, M5 X 20.0			61
-	1	5-18022-5	SCR, HEX HD CAP, M4 X 6.0			59
-	1	462427-2	FINGER, FEED			56
-	2	2168083-8	SCR, SKT HD CAP, RoHS, M4 X 16			53
-	1	18023-9	SCR, SKT HD CAP M4 X 6.0			49
-	1	462433-7	SUPPORT, INSULATION			43
-	1	462433-6	SUPPORT, INSULATION			42
-	1	1803602-1	SCR, BHSC, RoHS (M8 X 25)			41
-	2	5-22278-1	SPRING, COMPRESSION			33
-	2	1-2168083-4	SCR, SKT HD CAP, RoHS, M4 X 5			30
-	1	2161336-2	PLATE, REAR STRIP GUIDE			29
-	2	22281-9	SPRING, COMPRESSION			27
-	1	356835-1	LEVER, DRAG RELEASE			26
-	1	240792-1	DRAG, TERMINAL			25
-	1	684042-4	GUIDE, STRIP, FRONT			24
-	1	980371-4	SCR, SKT HD SHLDR 5.0 DIA X 6.0			23
-	1	462431-6	WIRE FUNNEL			22
-	1	2168083-2	SCR, SKT HD CAP, RoHS, M4 X 8.0			21
-	1	1-18028-2	WASHER, FLAT, REG M4			20
-	1	2119533-1	STRIPPER, SIDE FEED			19
-	1	463460-3	HOLD DOWN, TERMINAL			18
-	1	469542-3	REAR FLOATING SHEAR			17
-	4	1-2168083-1	SCR, SKT HD CAP, RoHS, M3 X 6			16
-	1	2161335-2	SHEAR PLATE, REAR			15
-	1	2119862-2	SHEAR HOLDER, REAR			14
-	1	2280441-1	INSERT, SHEAR			13
-	1	3-22280-3	SPRING, COMPRESSION			12
-	1	356885-4	STOP, SHEAR			11
-	1	462843-6	TERMINAL SUPPORT			10
-	1	462843-5	TERMINAL SUPPORT			9
-	1	464291-4	ANVIL, SAND-BLASTED 22-18			8
-	1	803925-2	GUIDE, CARRIER SCRAP			7
-	1	2-690468-5	DEPRESSOR SHEAR, REAR			6
-	1	462431-1	WIRE FUNNEL			5
-	1	238011-1	BLOCK, CRIMPER SPACER			4
-	1	464290-1	CRIMPER, SEMI-FLAT 22-18			1
-77	-22	PART NO	DESCRIPTION			ITEM NO

PACIFIC VERSION
 Shown on sheets 3 of 4 & 4 of 4
 (Atlantic version shown on sheets 1 of 4 & 2 of 4)

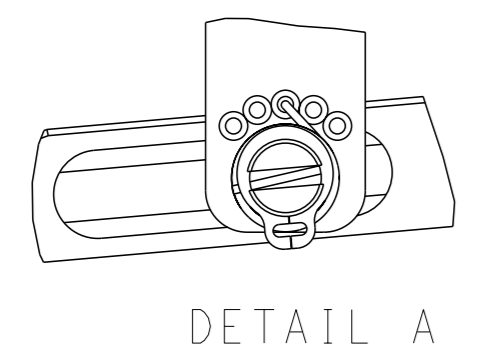
DIMENSIONS: mm TOLERANCES UNLESS OTHERWISE SPECIFIED: 0 PLC ± 1 PLC ± 2 PLC ± 3 PLC ± 4 PLC ± ANGLES FINISH ±		OWN: B. WEAVER 21OCT2011 CHK: G. HOFENER 21OCT2011 APVD: T. ELBIN 21OCT2011 PRODUCT SPEC APPLICATION SPEC		NAME: STE TE Connectivity Harrisburg, PA 17105-3608 OCEAN SIDE FEED APPLICATOR	
MATERIAL: .		WEIGHT: .		SIZE: A1	
Customer Accessible Production Drawing		SCALE: 1:1		SHEET 3 of 4 REV J	

LOC	DIST	REVISIONS					
A	66	P	LYR	DESCRIPTION	DATE	OWN	APVD
		-		SEE SHEET 1	-	-	-

FEED TYPE PNEUMATIC

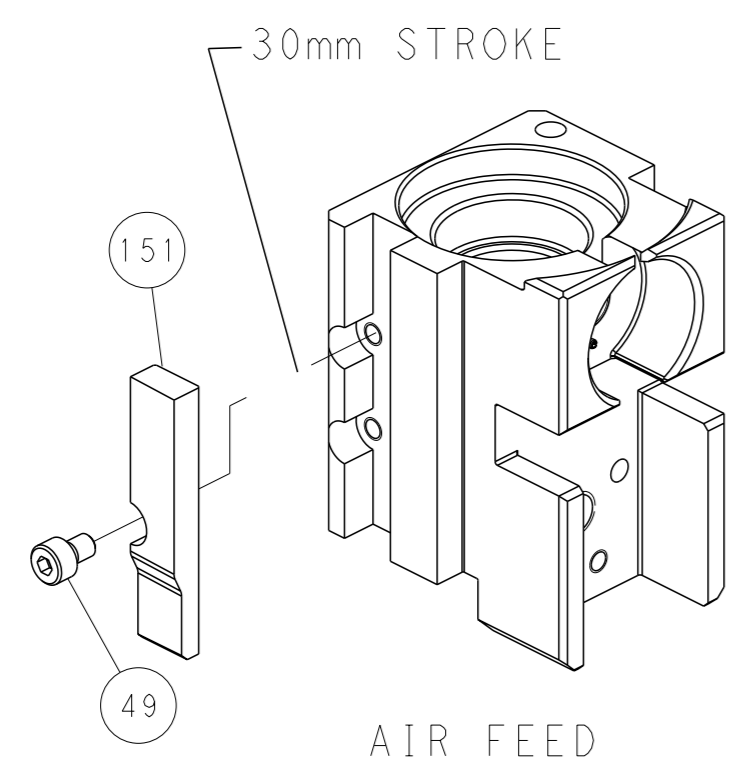


FEED SPRING SETTING POSITION (SHOWN FROM REAR SIDE)

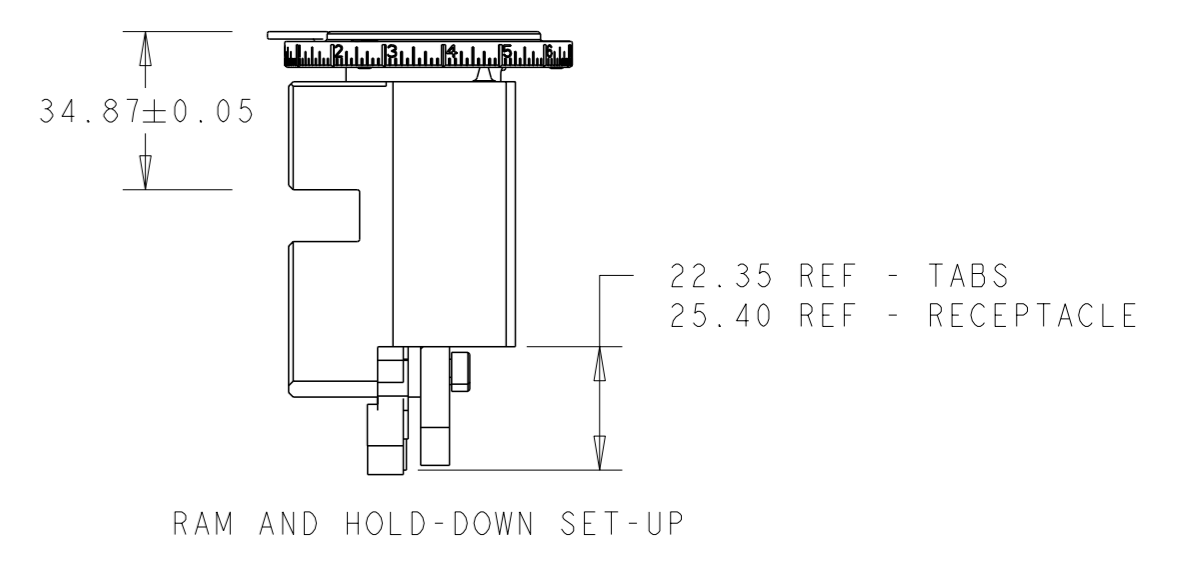
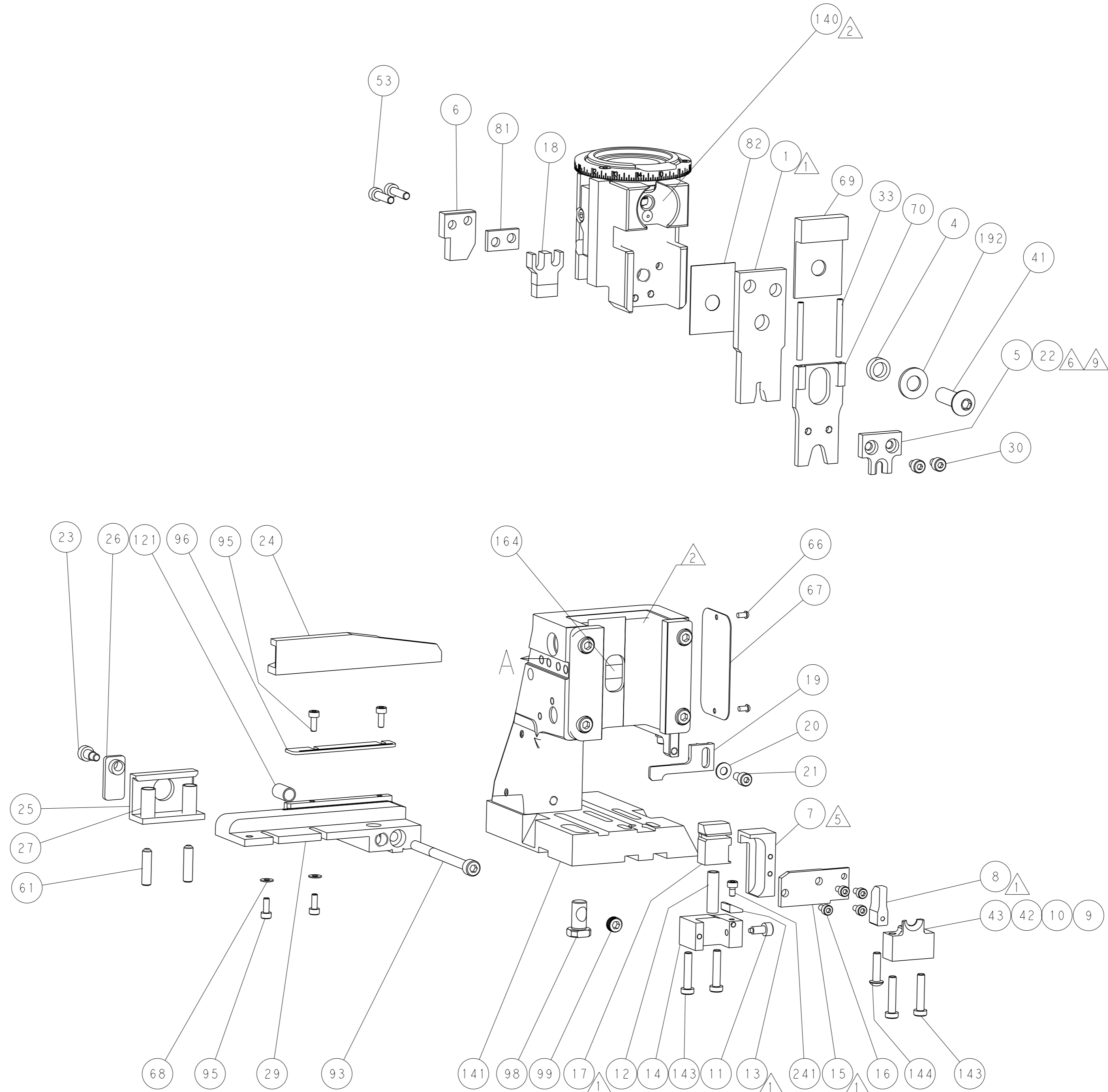


DETAIL A

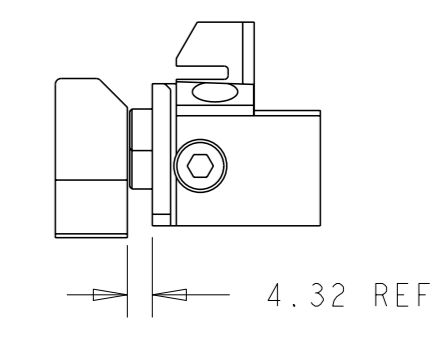
CAM POSITION



AIR FEED



RAM AND HOLD-DOWN SET-UP



LOWER TOOLING SET-UP

PACIFIC VERSION
 Shown on sheets 3 of 4 & 4 of 4
 (Atlantic version shown on sheets 1 of 4 & 2 of 4)

<small>THIS DRAWING IS UNPUBLISHED. RELEASED FOR PUBLICATION 2011. IT IS SUBJECT TO CHANGE AND THE USER ASSUMES ALL RESPONSIBILITY FOR THE DESIGNATION SHOULD BE CONTACTED FOR THE LATEST REVISION.</small>		OWN: B. WEAVER CHK: G. HOFNER APVD: T. ELBIN	21OCT2011 21OCT2011 21OCT2011	NAME: OCEAN SIDE FEED APPLICATOR SIZE: A1 CAGE CODE: 00779 DRAWING NO: C=2151034	RESTRICTED TO: - SCALE: 1:1 SHEET: 4 of 4 REV: J
DIMENSIONS: mm TOLERANCES UNLESS OTHERWISE SPECIFIED: 0 PLC ± 1 PLC ± 2 PLC ± 3 PLC ± 4 PLC ± ANGLES FINISH *		WEIGHT: - MATERIAL: -		CUSTOMER ACCESSIBLE PRODUCTION DRAWING	