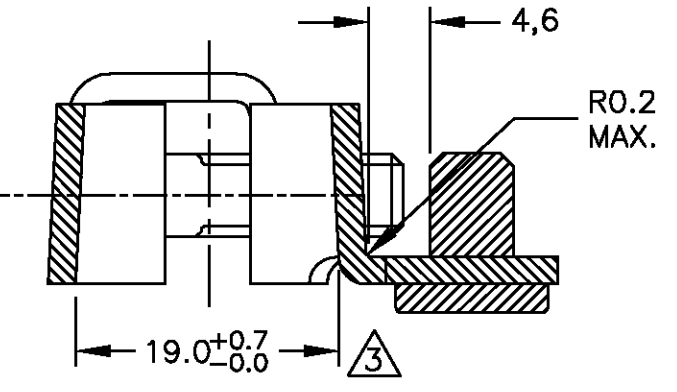
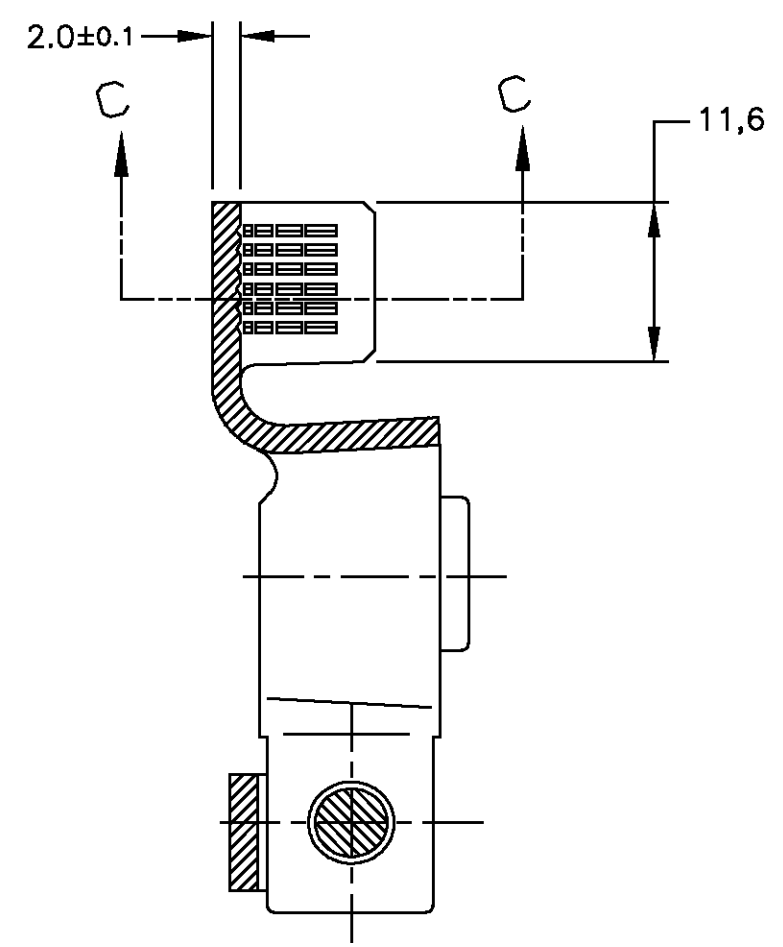


THIS DRAWING IS UNPUBLISHED. RELEASED FOR PUBLICATION .19  
 © COPYRIGHT 19 BY AMP INCORPORATED. ALL RIGHTS RESERVED.

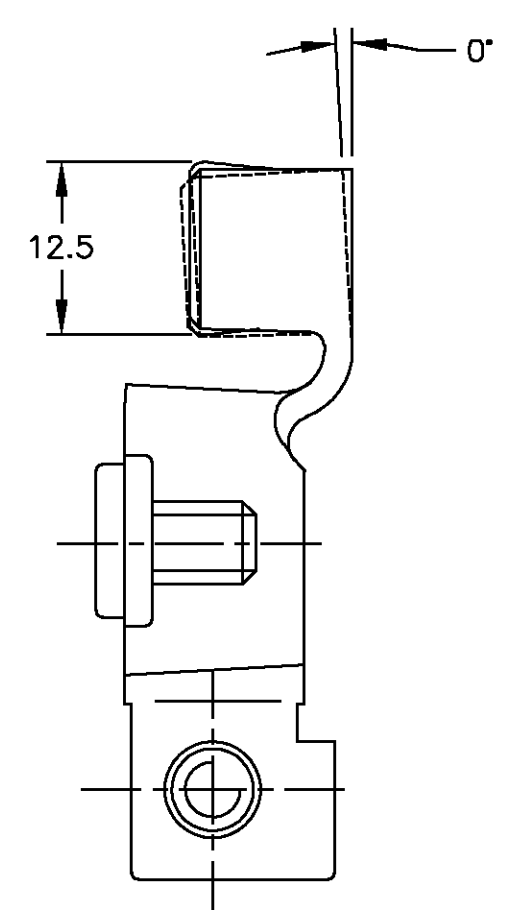
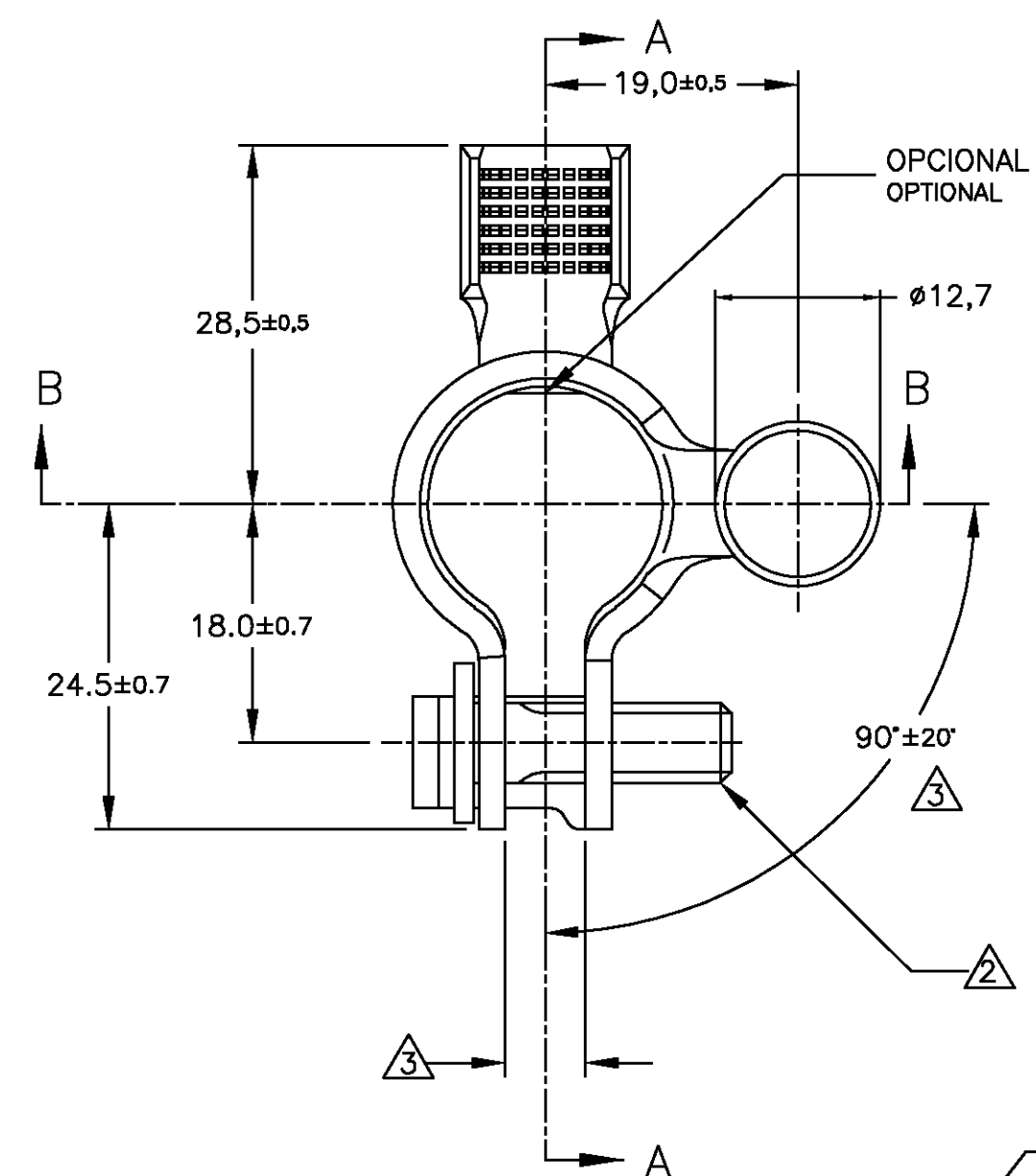
LOC		DIST		REVISIONS			
P	LTR	DESCRIPTION	DATE	DWN	APVD		
AP	-	F	REVISADO POR LE10-0216/05	17MAI05	DCB	PLF	



CORTE B-B  
SECTION B-B

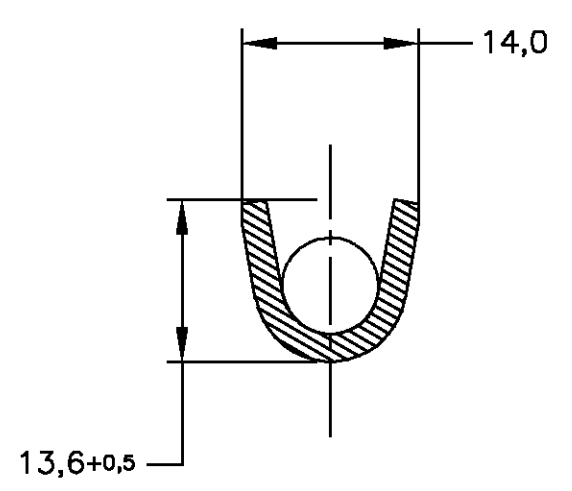


CORTE A-A  
SECTION A-A

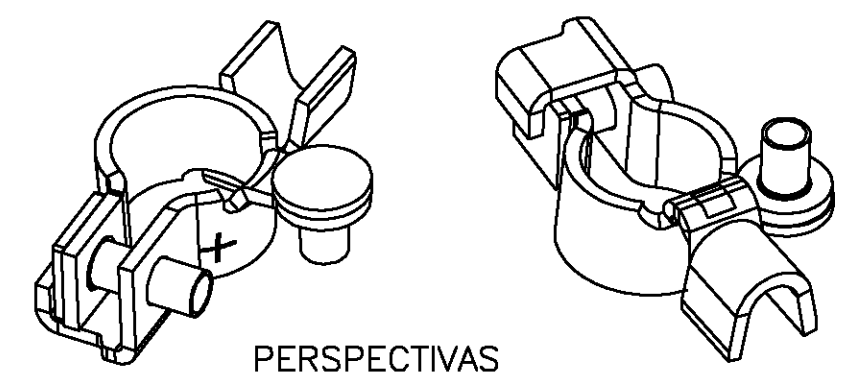


GRAVAÇÃO MARKING
LOGOTIPO AMP AMP LOGO
MARCA REGISTRADA FORD FORD TRADEMARK
SINAL POSITIVO (+) POSITIVE SIGN (+)

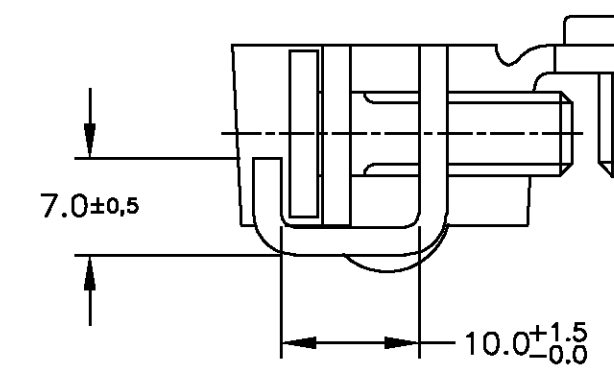
- △ - PARAFUSO M6X10, CLASSE 10.9 DE ACORDO COM ISO 898;  
- ZINCO, RESISTÊNCIA DO SPRAY: 72 HORAS, DE ACORDO COM ASTM-B-117, NÃO DEVE APRESENTAR CORROSÃO VERMELHA NO METAL BASE;
- △ - PARAFUSO M6X15, CLASSE 8.8 DE ACORDO COM ISO 898;  
- ZINCO, RESISTÊNCIA DO SPRAY: 72 HORAS, DE ACORDO COM ASTM-B-117, NÃO DEVE APRESENTAR CORROSÃO VERMELHA NO METAL BASE;
- △ - FECHAR A ABERTURA DO TERMINAL PARA 4.5 ± 0.2 PARA INSPECIONAR ESTAS DIMENSÕES;
- △ - VER DESENHO DE CLIENTE RESTRITO 1380259-1.
- ⊙ △ - SCREW M6X10, CLASS 10.9, ACCORDING TO ISO 898;  
- ZINC, SALT SPRAY RESISTANCE: 72 HOURS, ACCORDING TO ASTM-B-117, SHALL NOT PRESENT RED CORROSION IN THE BASE METAL;
- ⊙ △ - SCREW M6X15, CLASS 8.8, ACCORDING TO ISO 898;  
- ZINC, SALT SPRAY RESISTANCE: 72 HOURS, ACCORDING TO ASTM-B-117, SHALL NOT PRESENT RED CORROSION IN THE BASE METAL;
- △ - CLOSE THE OPEN ENDS TO 4.5 ± 0.2 INSPECT THESE DIMENSIONS;
- △ - SEE RESTRICTED CUSTOMER DRAWING 1380259-1.



CORTE C-C  
SECTION C-C



PERSPECTIVAS  
ESCALA 1:1  
PERSPECTIVE VIEWS  
SCALE 1:1



WIRE RANGE (mm2)	NOTE	FINISH	MATERIAL	PART NUMBER
16,0-20,0	THIS DRAWING IS A CONTROLLED DOCUMENT.		AMP	1380259-1
	DIMENSIONS: MM	TOLERANCES UNLESS OTHERWISE SPECIFIED:	PRODUCT SPEC	NAME
	0 PLC ± -	1 PLC ± 0,3	-/-	
	2 PLC ± -	3 PLC ± -	APPLICATION SPEC	
	4 PLC ± -	ANGLES ± 1	-/-	
	MATERIAL: SEE TABLE	FINISH: SEE TABLE	WEIGHT: -	SIZE: A2
				CAGE CODE: 00779
				DRAWING NO: C=1380259
				RESTRICTED TO: -
				SCALE: 1:1
				SHEET: 1 OF 1
				REV: F

1380259