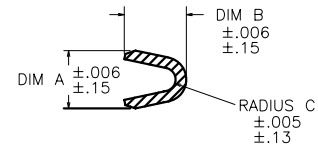
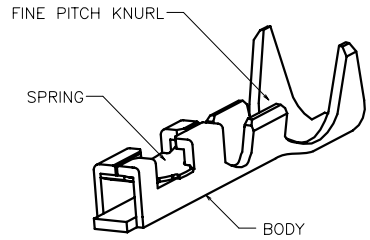
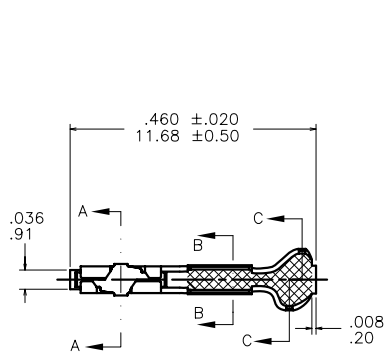
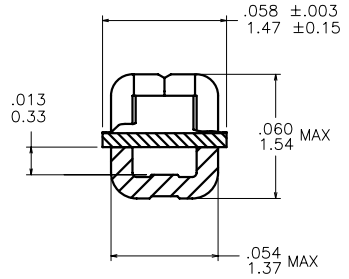
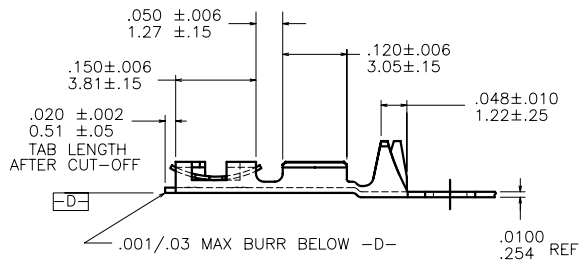


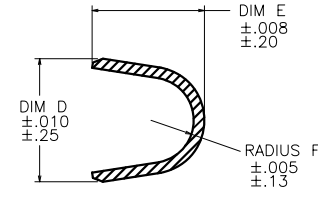
| PRODUCT NUMBER SEE TABLE | AWG RANGE | WIRE BARREL | | | INSULATION BARREL | | | |
|-----------------------------|--------------|-------------|-----------|-----------|-----------------------|-----------|-----------|-----------|
| | | A | B | C | INS. DIA. RANGE | D | E | F |
| | 18-20 | .104/2.64 | .104/2.64 | .021/0.53 | .042/1.07 - .103/2.62 | .139/3.53 | .120/3.05 | .050/1.27 |
| | 22-26 | .070/1.78 | .070/1.78 | .017/0.43 | .036/0.91 - .103/2.62 | .139/3.53 | .120/3.05 | .050/1.27 |
| | 28-32 | .054/1.37 | .058/1.47 | .011/0.28 | .028/0.71 - .054/1.37 | .115/2.92 | .105/2.67 | .040/1.02 |



SECTION Y-Y
SCALE 2:1



SECTION X-X
SCALE 4:1
ROTATED 90° CW



SECTION Z-Z
SCALE 2:1

| | | | | | | | | | | | |
|--------------------------|----------|-----|------------|---------------------------------------|----------------------|------------|--|------------------|--|--|------|
| mat'l. code SEE TABLE | | | | surface | | tolerance | | projection | | product family PV TERMINALS | |
| ltr | ecn no | dr | date | tolerances unless otherwise specified | | INCH/MM | | title | | MINI PV™ C.T.W. RECEPT. FOR .019 [0.48] PIN | |
| N | V08-0510 | HTB | 2008-12-02 | angles | XX +01/X+3 | scale 3:1 | | dwg no | | sheet 1 of 3 | size |
| - | - | - | - | lines | .XXX +0.005/.XXX+13 | FCI | | 75374 | | A4 | |
| H | V05-0530 | HTB | 2005-05-27 | 0° ±2' | XXXX +0.020/.XXX+051 | type | | CUSTOMER Drawing | | | |
| J | V06-0623 | HTB | 2006-06-28 | dr | E. KROPIEWNICKI | 1996-10-07 | | | | | |
| K | V07-0218 | HTB | 2007-03-16 | engr | M. SMYK | 1996-10-07 | | | | | |
| L | V07-0517 | HTB | 2007-08-08 | chr | T. BREWBAKER | 1996-10-07 | | | | | |
| M | V08-0115 | HTB | 2008-04-02 | appd | M. SMYK | 1996-10-07 | | | | | |
| sheet | revision | N | N | N | | | | | | | |
| index | sheet | 1 | 2 | 3 | | | | | | | |



| PRODUCT NUMBER | | SPRING THICKNESS | AWG RANGE | MATERIAL & PLATING | |
|----------------|-------------|------------------|-----------|--|--------------------------|
| REELED | LOOSE PIECE | | | 1/4 HARD BRASS BODY | BeCu HEAT TREATED SPRING |
| 75374-001 | 75374-002 | O B S O L E T E | | 40µ/1.02µm MIN GOLD OVER 50µ/1.27µm MIN NICKEL IN CONTACT AREA REMAINDER OF TOP OF TERMINAL GOLD FLASH OVER 50µ"/1.27µm NICKEL BACKSIDE OF TERMINAL PLATED WITH 30µ"/0.76µm NICKEL ONLY | GOLD FLASH |
| 75374-001LF | 75374-002LF | .0065/0.165 | 22-26 | | |
| 75374-003 | 75374-004 | O B S O L E T E | | | |
| 75374-003LF | 75374-004LF | .0048/0.120 | 22-26 | | |
| 75374-005 | 75374-006 | O B S O L E T E | | | |
| 75374-005LF | 75374-006LF | .0035/0.090 | 22-26 | | |
| 75374-007 | 75374-008 | O B S O L E T E | | | |
| 75374-007LF | 75374-008LF | .0065/0.165 | 28-32 | | |
| 75374-009 | 75374-010 | O B S O L E T E | | | |
| 75374-009LF | 75374-010LF | .0048/0.120 | 28-32 | | |
| 75374-011 | 75374-012 | O B S O L E T E | | | |
| 75374-011LF | 75374-012LF | .0035/0.090 | 28-32 | | |
| 75374-013 | 75374-014 | O B S O L E T E | | | |
| 75374-013LF | 75374-014LF | .0065/0.165 | 18-20 | | |
| 75374-015 | 75374-016 | O B S O L E T E | | | |
| 75374-015LF | 75374-016LF | .0048/0.120 | 18-20 | | |
| 75374-017 | 75374-018 | O B S O L E T E | | | |
| 75374-017LF | 75374-018LF | .0035/0.090 | 18-20 | | |
| 75374-019 | 75374-020 | O B S O L E T E | | TIN | |
| 75374-019LF | 75374-020LF | .0065/0.165 | 22-26 | | HOT DIPPED TIN (NOTE 5) |
| 75374-021 | 75374-022 | O B S O L E T E | | | O B S O L E T E |
| 75374-021LF | 75374-022LF | .0048/0.120 | 22-26 | | HOT DIPPED TIN (NOTE 5) |
| 75374-023 | 75374-024 | O B S O L E T E | | | O B S O L E T E |
| 75374-023LF | 75374-024LF | .0035/0.090 | 22-26 | | HOT DIPPED TIN (NOTE 5) |

| | | | | | | | | | |
|-------------|----------------|---------|------|---------------------------------------|---|------------|--|--|--|
| mat'l. code | | surface | | tolerance | | projection | | product family | |
| SEE TABLE | | ✓ | | | | | | PV TERMINALS | |
| ltr | ecrn no | dr | date | tolerances unless otherwise specified | | | | title | |
| N | | | | angles | .XX +.01/X+3 .XXX +.005/XX+13 0' ±2' XXXX +.0020/XXX+.051 | INCH/MM | | MINI PV™ C.T.W. RECEPT. FOR .019 [0.48] PIN | |
| | | | | dr | E. KROPIEWNICKI 1996-10-07 | scale 1:1 | | dwg no sheet 2 of 3 size | |
| | | | | engr | M. SMYK 1996-10-07 | | | 75374 A4 | |
| | | | | chr | T. BREWBAKER 1996-10-07 | | | type CUSTOMER Drawing | |
| | | | | appd | M. SMYK 1996-10-07 | | | | |
| sheet index | revision sheet | | | | | | | | |



| PRODUCT NUMBER | | SPRING THICKNESS | AWG RANGE | MATERIAL & PLATING | |
|----------------|-------------|------------------|-----------|-------------------------|--------------------------|
| REELED | LOOSE PIECE | | | 1/4 HARD BRASS BODY | BeCu HEAT TREATED SPRING |
| 75374-025 | 75374-026 | O B S O L E T E | | O B S O L E T E | |
| 75374-025LF | 75374-026LF | .0065/0.165 | 28-32 | HOT DIPPED TIN (NOTE 5) | |
| 75374-027 | 75374-028 | O B S O L E T E | | O B S O L E T E | |
| 75374-027LF | 75374-028LF | .0048/0.120 | 28-32 | HOT DIPPED TIN (NOTE 5) | |
| 75374-029 | 75374-030 | O B S O L E T E | | O B S O L E T E | |
| 75374-029LF | 75374-030LF | .0035/0.090 | 28-32 | HOT DIPPED TIN (NOTE 5) | |
| 75374-031 | 75374-032 | O B S O L E T E | | O B S O L E T E | |
| 75374-031LF | 75374-032LF | .0065/0.165 | 18-20 | HOT DIPPED TIN (NOTE 5) | |
| 75374-033 | 75374-034 | O B S O L E T E | | O B S O L E T E | |
| 75374-033LF | 75374-034LF | .0048/0.120 | 18-20 | HOT DIPPED TIN (NOTE 5) | |
| 75374-035 | 75374-036 | O B S O L E T E | | O B S O L E T E | |
| 75374-035LF | 75374-036LF | .0035/0.090 | 18-20 | HOT DIPPED TIN (NOTE 5) | |

NOTES:

- PART TO MATE WITH .019 ±.002/0.48 ±0.05 PIN.
- TAB CUT-OFF DIM IS VERY CRITICAL WHEN USED IN CONJUNCTION WITH MINI ROD AND MINI LATCH HOUSINGS.
- APPLICABLE SPECIFICATION :
 - TA-75 : CRIMP METHODS FOR USE IN MINI LATCH HOUSINGS.
 - TA-210 : CRIMP METHODS FOR USE IN MINI ROD HOUSINGS.
- PRODUCT MEETS EUROPEAN UNION DIRECTIVES AND OTHER COUNTRY REGULATIONS AS DESCRIBED IN GS-22-008.
- THIS PRODUCT HAS 100% TIN PLATING IN THE INTERFACE AND HAS NOT BEEN TESTED FOR WHISKER GROWTH IN ALL INTERCONNECT ENVIRONMENTS.
- THIS PRODUCT IS NOT INTENDED TO BE EXPOSED TO MANUFACTURING SOLDERING PROCESSES.

| | | | | | | | | | |
|-------------|----------------|---------|------|---------------------------------------|--------------|---------------------|-----------|--|--|
| mat'l. code | | surface | | tolerance | | projection | | product family | |
| SEE TABLE | | ✓ | | | | INCH/MM | | PV TERMINALS | |
| ltr | ecrn no | dr | date | tolerances unless otherwise specified | | INCH/MM | | title | |
| N | | | | angles | ° ±2' | XX +.01/X+3 | scale 1:1 | MINI PV™ C.T.W. RECEPT. FOR .019 [0.48] PIN | |
| | | | | | | XXX +.005/XX+13 | | dwg no | |
| | | | | | | XXXX +.0020/XXX+051 | | sheet 3 of 3 size | |
| | | | | dr | T. BREWBAKER | 2005-05-19 | FCI | 75374 | |
| | | | | engr | T. BREWBAKER | 2005-05-19 | | A4 | |
| | | | | chr | T. BREWBAKER | 2005-05-19 | | type | |
| | | | | appd | T. BREWBAKER | 2005-05-19 | | CUSTOMER Drawing | |
| sheet index | revision sheet | | | | | | | | |